



Terminals & Splices > Splices



Sealable: **Yes**

Contact Base Material: **Copper**

Government Qualified Splice: **No**

Packaging Method: **Bag/Box**

Insulation Option: **Fully Insulated**

Features

Product Type Features

Sealable	Yes
----------	-----

Contact Features

Contact Base Material	Copper
-----------------------	--------

Usage Conditions

Insulation Option	Fully Insulated
Operating Temperature Range	-65 – 150 °C[-85 – 302 °F]

Industry Standards

Government Qualified Splice	No
-----------------------------	----

Packaging Features

Packaging Method	Bag/Box
------------------	---------

Other

EU RoHS Compliance	Not Compliant
EU ELV Compliance	Not Compliant

Product Compliance

[For compliance documentation, visit the product page on TE.com>](#)

EU RoHS Directive 2011/65/EU	Not Compliant
------------------------------	---------------



EU ELV Directive 2000/53/EC

Not Compliant

China RoHS 2 Directive MIIT Order No 32, 2016

Restricted Materials Above Threshold

EU REACH Regulation (EC) No. 1907/2006

Current ECHA Candidate List: JUNE 2024 (241)

Candidate List Declared Against: JUNE 2024 (241)

SVHC > Threshold:

Pb (37% in Solder)

Article Safe Usage Statements:

Do not eat, drink or smoke when using this product. Wash thoroughly after handling. Recycle if possible and dispose of the article by following all applicable governmental regulations relevant to your geographic location.

Halogen Content

Low Bromine/Chlorine - Br and Cl < 900 ppm per homogenous material. Also BFR /CFR/PVC Free

Solder Process Capability

Not applicable for solder process capability

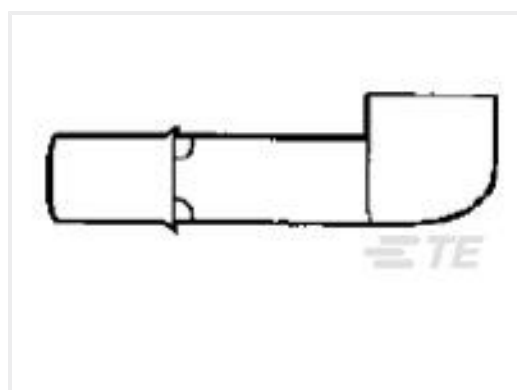
Product Compliance Disclaimer

This information is provided based on reasonable inquiry of our suppliers and represents our current actual knowledge based on the information they provided. This information is subject to change. The part numbers that TE has identified as EU RoHS compliant have a maximum concentration of 0.1% by weight in homogenous materials for lead, hexavalent chromium, mercury, PBB, PBDE, DBP, BBP, DEHP, DIBP, and 0.01% for cadmium, or qualify for an exemption to these limits as defined in the Annexes of Directive 2011/65/EU (RoHS2). Finished electrical and electronic equipment products will be CE marked as required by Directive 2011/65/EU. Components may not be CE marked. Additionally, the part numbers that TE has identified as EU ELV compliant have a maximum concentration of 0.1% by weight in homogenous materials for lead, hexavalent chromium, and mercury, and 0.01% for cadmium, or qualify for an exemption to these limits as defined in the Annexes of Directive 2000/53/EC (ELV). Regarding the REACH Regulation, the information TE provides on SVHC in articles for this part number is based on the latest European Chemicals Agency (ECHA) 'Guidance on requirements for substances in articles' posted at this URL: <https://echa.europa.eu/guidance-documents/guidance-on-reach>

Customers Also Bought



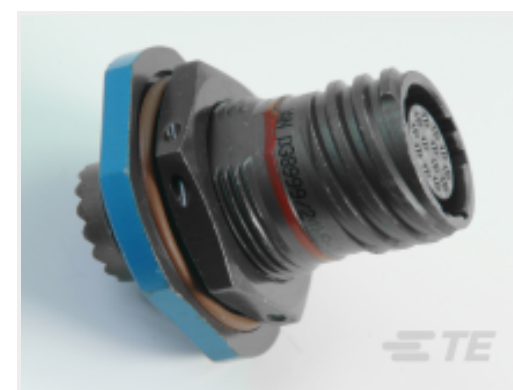
TE Part #EH8863-000
CBS-22C182-M18-0



TE Part #31945
KNIFE DISCONNECT,STD B 12-10



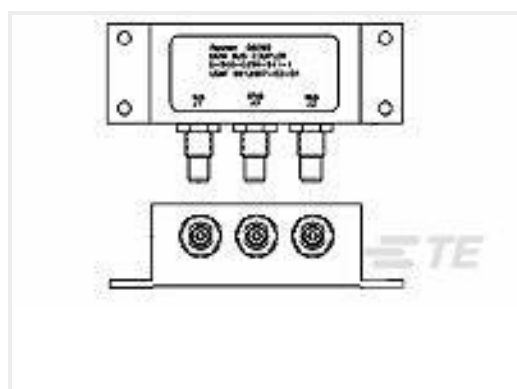
TE Part #YDTS24F11-99SNV001
RECP ASSY



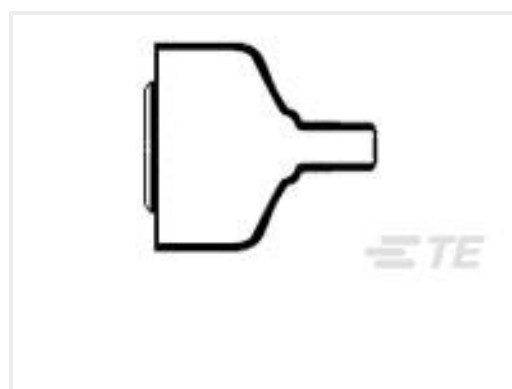
TE Part #YDTS24F17-08PNC001
RECP ASSY



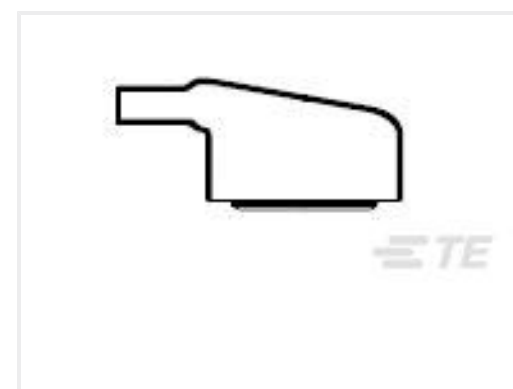
TE Part #1693797-1
CURING FIXT, PLUG



TE Part #585435-000
D-500-0255-513-1



TE Part #808910-000
214A021-3/42-0



TE Part #806828-000
234A011-3/42-0



Documents

Product Drawings

[B-070-84](#)

English