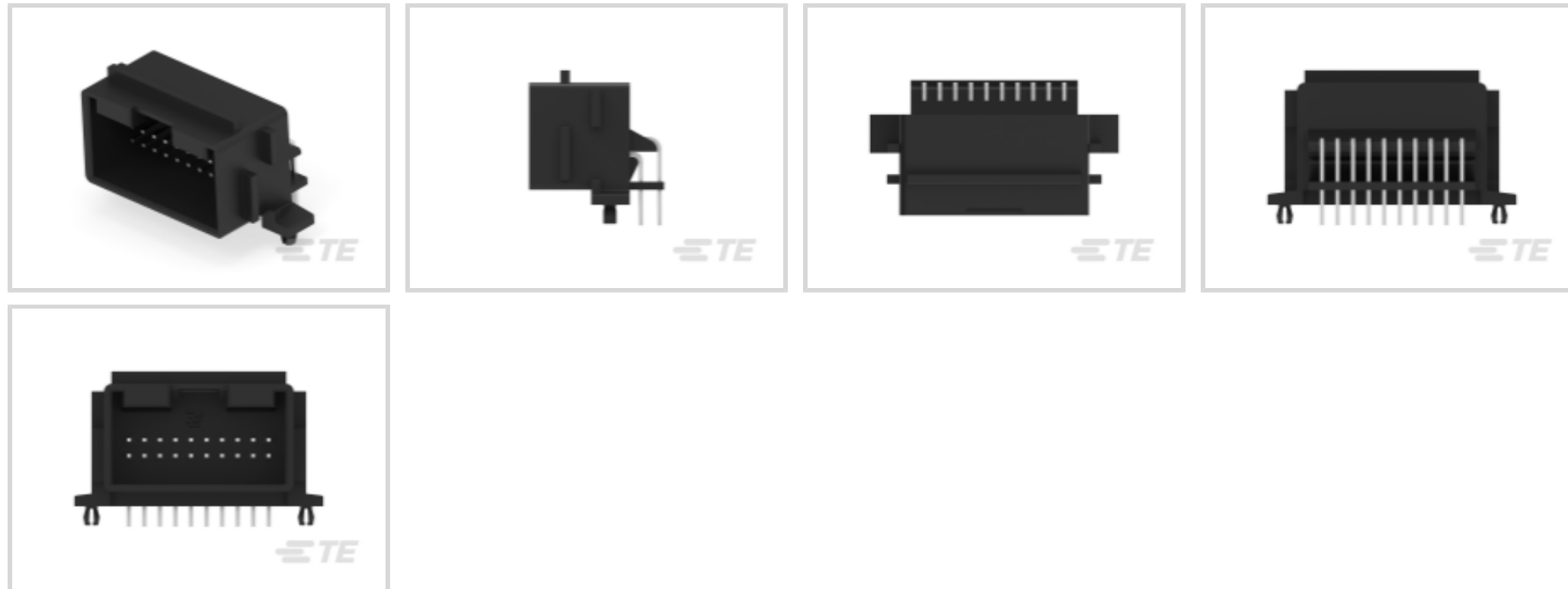




Connectors > PCB Connectors > PCB Headers & Receptacles



PCB Connector Assembly Type: **PCB Mount Header**

PCB Mount Orientation: **Horizontal**

Connector System: **Wire-to-Board**

Number of Positions: **10**

Number of Rows: **2**

Features

Electrical Characteristics

Nominal Voltage Architecture	12 V
------------------------------	------

Mechanical Attachment

PCB Mount Retention Type	Boardlock
Connector Mounting Type	Board Mount
Mating Alignment	With

Operation/Application

Shielded	No
Circuit Application	Signal

Contact Features

Mating Tab Thickness	.63 mm
Contact Size	.63mm
Mating Tab Width	.63 mm
Contact Mating Area Plating Material	Tin
Contact Type	Tab



Product Type Features

Mixed & Hybrid Header	No
Connector Shape	Rectangular
PCB Connector Assembly Type	PCB Mount Header
Connector System	Wire-to-Board
Header Type	Fully Shrouded
Sealable	No
Connector & Contact Terminates To	Printed Circuit Board

Configuration Features

PCB Mount Orientation	Horizontal
Number of Positions	10
Number of Rows	2

Body Features

Primary Product Color	Black
-----------------------	-------

Termination Features

Termination Method to PCB	Through Hole - Solder
---------------------------	-----------------------

Housing Features

Centerline (Pitch)	2.5 mm
--------------------	--------

Usage Conditions

Operating Temperature Range	-40 – 110 °C[-40 – 230 °F]
-----------------------------	----------------------------

Other

EU RoHS Compliance	Compliant
EU ELV Compliance	Compliant

Product Compliance

[For compliance documentation, visit the product page on TE.com>](#)

EU RoHS Directive 2011/65/EU	Compliant
EU ELV Directive 2000/53/EC	Compliant
China RoHS 2 Directive MIIT Order No 32, 2016	No Restricted Materials Above Threshold
EU REACH Regulation (EC) No. 1907/2006	Current ECHA Candidate List: JUNE 2024 (241) Candidate List Declared Against: JUNE 2024 (241)



Does not contain REACH SVHC

Halogen Content

Low Halogen - Br, Cl, F, I < 900 ppm per homogenous material. Also BFR/CFR/PVC Free

Solder Process Capability

Wave solder capable to 240°C

Product Compliance Disclaimer

This information is provided based on reasonable inquiry of our suppliers and represents our current actual knowledge based on the information they provided. This information is subject to change. The part numbers that TE has identified as EU RoHS compliant have a maximum concentration of 0.1% by weight in homogenous materials for lead, hexavalent chromium, mercury, PBB, PBDE, DBP, BBP, DEHP, DIBP, and 0.01% for cadmium, or qualify for an exemption to these limits as defined in the Annexes of Directive 2011/65/EU (RoHS2). Finished electrical and electronic equipment products will be CE marked as required by Directive 2011/65/EU. Components may not be CE marked. Additionally, the part numbers that TE has identified as EU ELV compliant have a maximum concentration of 0.1% by weight in homogenous materials for lead, hexavalent chromium, and mercury, and 0.01% for cadmium, or qualify for an exemption to these limits as defined in the Annexes of Directive 2000/53/EC (ELV). Regarding the REACH Regulation, the information TE provides on SVHC in articles for this part number is based on the latest European Chemicals Agency (ECHA) 'Guidance on requirements for substances in articles' posted at this URL: <https://echa.europa.eu/guidance-documents/guidance-on-reach>

Compatible Parts

TE Part # 2290278-1
COVER, MQS 2X10POSN.

TE Part # 1534099-1
MOS COVER 2X10P

TE Part # 1-1534099-1
MOS ABDECKKAPP2X10P

Also in the Series | AMPMODU Headers

Automotive Headers(1)

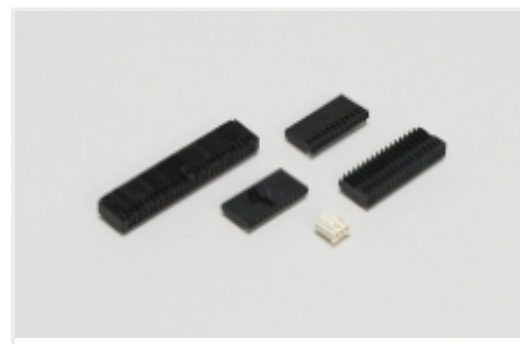
Board-to-Board Headers & Receptacles(1575)

Connector Contacts(52)

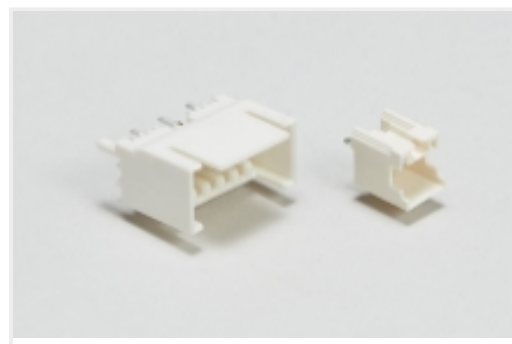
Connector Hardware(1)



PCB Headers & Receptacles(1620)

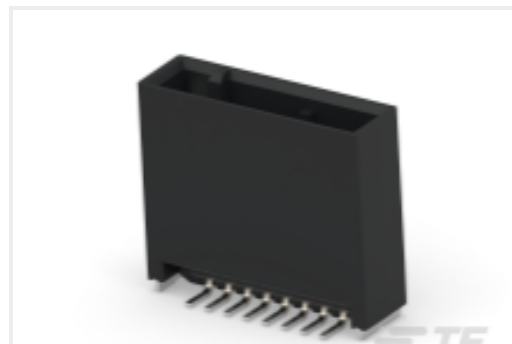
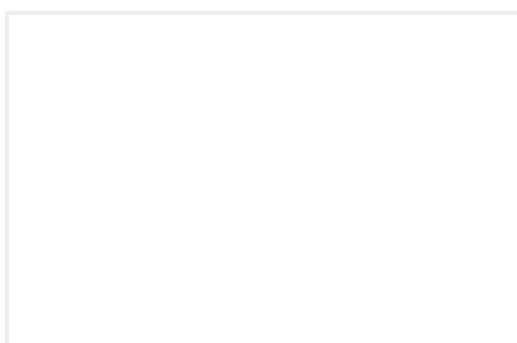
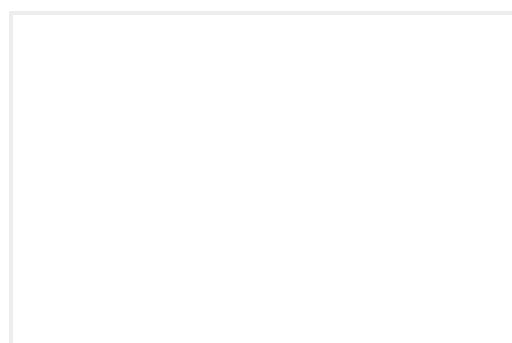


Wire-to-Board Connector Assemblies & Housings(5)



Wire-to-Board Headers & Receptacles (114)

Customers Also Bought

TE Part #CAT-SIGH262
Signal HeaderTE Part #2-1904058-7
V23700F0002A408-EV-CBOXTE Part #2394812-1
8POS,TAB0.5X0.4,HDR ASSY,180DEG,
COD ATE Part #1-2395010-1
2X8POS,NANOMQS,HDR ASSY,
180DEG,SMD,COD ATE Part #2278273-1
3H IMMOBILIZER ASSEMBLYTE Part #1-2395006-1
2X6POS,NANOMQS,HDR ASSY,
180DEG,SMD,COD ATE Part #9-2354815-4
ACU 66P HDR ASSY(A4A5-B2B4)

Documents

Product Drawings

[MOD2 ST-WANNE 2X10P](#)

English

CAD Files

Customer View Model

[ENG_CVM_966871-1_C3.3d_igs.zip](#)

English

Customer View Model

[ENG_CVM_966871-1_C3.3d_stp.zip](#)

English

Customer View Model

[ENG_CVM_966871-1_C3.2d_dxf.zip](#)

English

3D PDF

3D

By downloading the CAD file I accept and agree to the [Terms and Conditions](#) of use.



Product Specifications

Product Specification

English