

929987-1 ✓ ACTIVE

AMP | Round Connector System

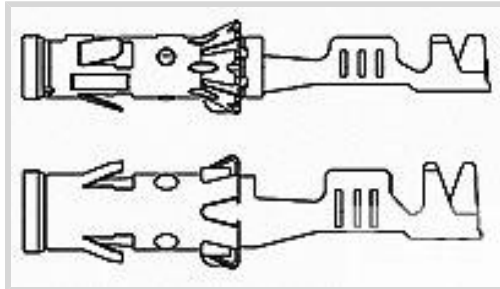
TE Internal #: 929987-1

Socket Terminal, Tin (Sn), 1.5 mm [.059 in] Pin Diameter, 17 – 13 AWG, 1 – 2.5 mm² Wire, Terminates To Wire, Round Connector System

[View on TE.com >](#)



Terminals & Splices > Automotive Terminals > ROUND CONNECTOR SYSTEM, PIN AND SOCKET



Terminal Type: **Socket**

Interface Plating: **Tin (Sn)**

Mating Pin Diameter: **1.5 mm [.059 in]**

Terminal Transmits: **0 – 24 A (Low Power)**

Wire Size: **17 – 13 AWG**

[All ROUND CONNECTOR SYSTEM, PIN AND SOCKET \(47\)](#)

Features

Operation/Application

Compatible With Wire Base Material	Copper
------------------------------------	--------

Packaging Features

Packaging Method	Reel
Packaging Quantity	3800

Usage Conditions

Insulation Option	Uninsulated
Operating Temperature (Max)	125 °C[212 °F]
Operating Temperature Range	-40 – 130 °C[-40 – 266 °F]

Termination Features

Termination Method to Wire & Cable	Crimp
Product Terminates To	Wire

Product Type Features

Receptacle Style	180°
Sealable	No
Primary Locking Feature	Locking Lance

Dimensions



Compatible Insulation Diameter Range	1.9 – 3 mm [.075 – .118 in]
Wire Size	1 – 2.5 mm ²
Wire Size Search	2.5 mm ² , 1.25 mm ² , 2 mm ² , 1 mm ² , 1.5 mm ²

Contact Features

Typical Current Rating	10 A
Crimp Type	F-Crimp
Contact Size	1.5mm
Contact Fabrication	Stamped & Formed
Wire Contact Termination Area Plating Material	Tin
Terminal Type	Socket
Interface Plating	Tin (Sn)
Mating Pin Diameter	1.5 mm [.059 in]

Other

Terminal Transmits	0 – 24 A (Low Power)
EU RoHS Compliance	Compliant
EU ELV Compliance	Compliant

Product Compliance

[For compliance documentation, visit the product page on TE.com>](#)

EU RoHS Directive 2011/65/EU	Compliant
EU ELV Directive 2000/53/EC	Compliant
China RoHS 2 Directive MIIT Order No 32, 2016	No Restricted Materials Above Threshold
EU REACH Regulation (EC) No. 1907/2006	Current ECHA Candidate List: JUNE 2024 (241) Candidate List Declared Against: JUNE 2023 (235) Does not contain REACH SVHC
Halogen Content	Low Halogen - Br, Cl, F, I < 900 ppm per homogenous material. Also BFR/CFR/PVC Free
Solder Process Capability	Not applicable for solder process capability

Product Compliance Disclaimer

This information is provided based on reasonable inquiry of our suppliers and represents our current actual knowledge based on the information they provided. This information is subject to change. The part numbers that TE has identified as EU RoHS compliant have a maximum concentration of 0.1% by weight in homogenous materials for lead, hexavalent chromium, mercury, PBB, PBDE, DBP, BBP, DEHP, DIBP, and 0.01% for cadmium, or qualify for an exemption to these limits as defined in the Annexes of Directive 2011/65/EU (RoHS2). Finished electrical and electronic equipment products

will be CE marked as required by Directive 2011/65/EU. Components may not be CE marked. Additionally, the part numbers that TE has identified as EU ELV compliant have a maximum concentration of 0.1% by weight in homogenous materials for lead, hexavalent chromium, and mercury, and 0.01% for cadmium, or qualify for an exemption to these limits as defined in the Annexes of Directive 2000/53/EC (ELV). Regarding the REACH Regulation, the information TE provides on SVHC in articles for this part number is based on the latest European Chemicals Agency (ECHA) 'Guidance on requirements for substances in articles' posted at this URL: <https://echa.europa.eu/guidance-documents/guidance-on-reach>

Compatible Parts



TE Part # 1394779-1
1,5MM ST-GEH 4P



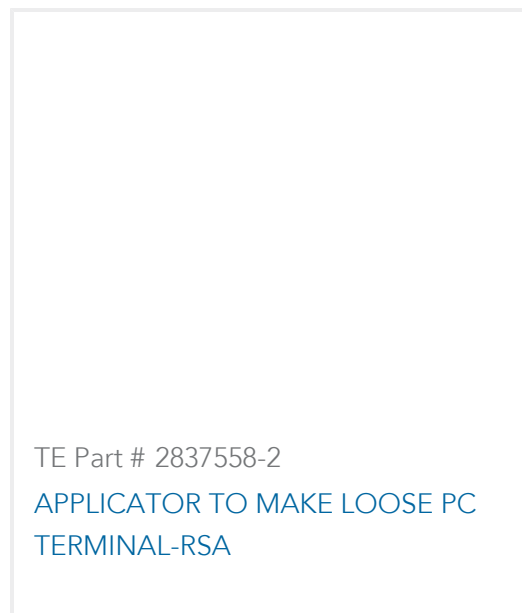
TE Part # 7-2266503-7
OCEAN_2.0_SPARE_PART_KIT-100F130O



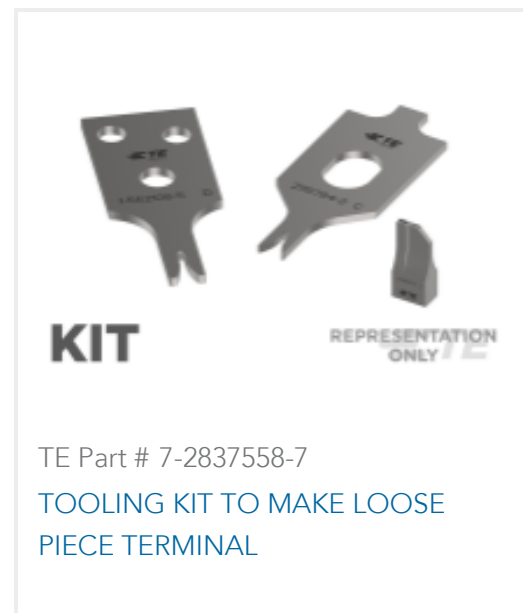
TE Part # 2837558-1
APPLICATOR TO MAKE LOOSE PC TERMINAL-RSM



TE Part # 2305570-1
Strip Terminal Cutter-Side Feed-No Crimp



TE Part # 2837558-2
APPLICATOR TO MAKE LOOSE PC TERMINAL-RSA



TE Part # 7-2837558-7
TOOLING KIT TO MAKE LOOSE PIECE TERMINAL



TE Part # 2266503-2
OCEAN_2.0_Applicator-S-100F130O-RSA



TE Part # 2266503-1
OCEAN_2.0_Applicator-S-100F130O-RSM

Also in the Series | Round Connector System



Automotive Connector Caps & Covers (5)



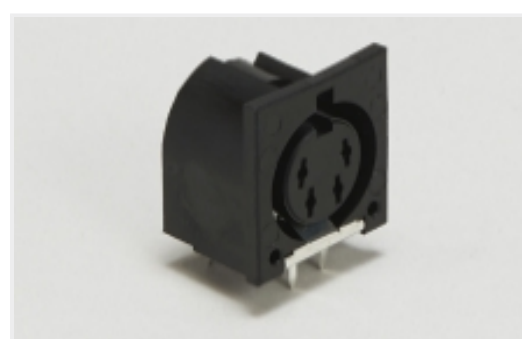
Automotive Housings(12)



Automotive Terminals(48)



Connector Seals & Cavity Plugs(5)



DIN Connectors(3)

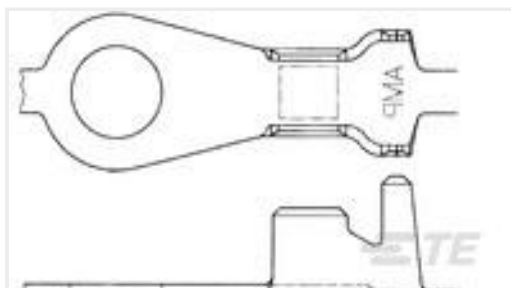


Insertion & Extraction Tools(8)

Customers Also Bought



TE Part #626037-2
RING TONGUE TERMINAL 4.0-6.0
MM2 TPBR



TE Part #881001-2
RING TONGUE 6.0-10.0 MM2 1.00X21.
7 TPBR



TE Part #5-965908-2
MQS0,63 Au tab LL EDS 0,5-0,75



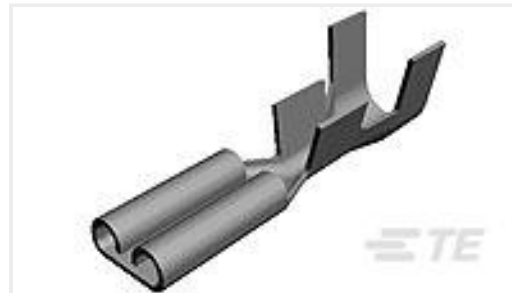
TE Part #626034-2
RING TONGUE 1.0-2.5 MM2 .236 X .
521 TPBR



TE Part #881624-2
187 FASTON REC 17-14 AWG TPBR



TE Part #880626-2
RING TONGUE 0.5-1.0 MM2 0.60X13.
23 TPBR



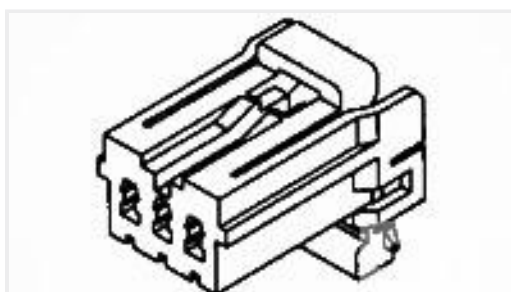
TE Part #63093-1
250 FASTON REC 18-14 AWG TPBR



TE Part #63646-2
187 FASTON REC 20-16 AWG TPBR



TE Part #1-1703543-0
2POS,TAB 2.8X0.8,TAB HSG,ASSY



TE Part #174922-1
070 MLC W-W PLUG HSG 4P NATURA

Documents

Product Drawings

1,5MM SOCK CONTACT

German

CAD Files

Customer View Model

[ENG_CVM_CVM_929987-1_L.2d_dxf.zip](#)

English

3D PDF

3D

Customer View Model

[ENG_CVM_CVM_929987-1_L.3d_igs.zip](#)

English

Customer View Model

[ENG_CVM_CVM_929987-1_L.3d_stp.zip](#)

English

By downloading the CAD file I accept and agree to the [Terms and Conditions](#) of use.

Product Specifications



[Application Specification](#)

German

[Application Specification](#)

English

[Application Specification](#)

English

[Application Specification](#)

English