

8-52949-1 ✓ ACTIVE



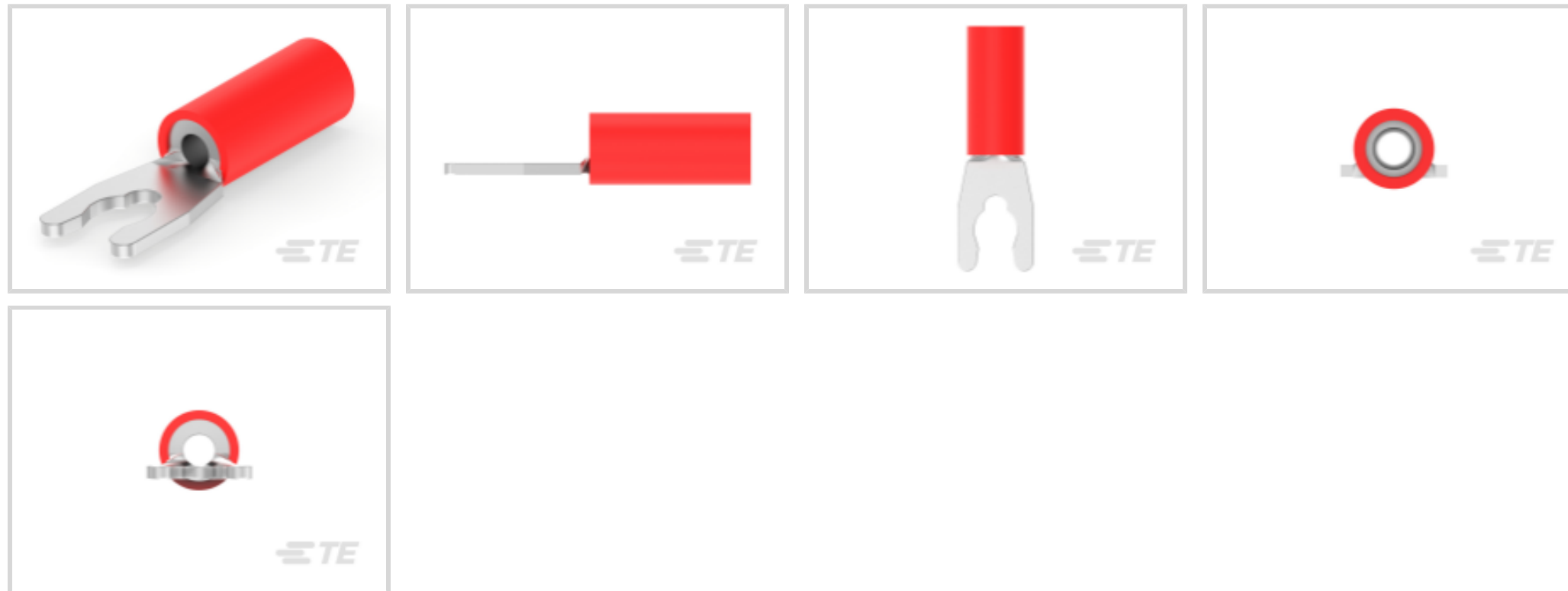
PLASTI-GRIP

TE Internal #: 8-52949-1

Spring Spade Terminal, 22 – 16 AWG, #6 / M3.5 Stud, 3.56 mm [.14 in] Stud Diameter, Closed Barrel, Straight, Tin Plating, PLASTI-GRIP

[View on TE.com >](#)

Terminals & Splices > Spade Terminals



Spade Terminal Type: **Spring Spade Terminal**

Wire Size: **509 – 3260 CMA**

Stud Size: **#6, M3.5**

Features

Mechanical Attachment

Wire Insulation Support	With
-------------------------	------

Electrical Characteristics

Voltage Rating	600 V
----------------	-------

Industry Standards

Government Qualified Terminal	No
-------------------------------	----

Body Features

Insulation Sleeve Color	Red
-------------------------	-----

Stripe Color	Red
--------------	-----

Packaging Features

Packaging Quantity	100
--------------------	-----

Packaging Method	Loose Piece
------------------	-------------

Product Type Features

Stud Size	#6, M3.5
-----------	----------

Sealable	No
----------	----

Wire Insulation Support Retention Type	Insulation Support
--	--------------------



Contact Features

Spade Terminal Type	Spring Spade Terminal
Barrel Type	Closed
Terminal Orientation	Straight
Terminal Plating Material	Tin

Dimensions

Wire Size	509 – 3260 CMA
Stud Diameter	3.56 mm [.14 in]
Tongue Thickness	.79 mm [.031 in]
Product Length	20.6 mm [.811 in]
Compatible Insulation Diameter (Max)	3.56 mm [.14 in]
Compatible Insulation Diameter Range	2.67 – 3.56 mm [.105 – .14 in]

Usage Conditions

Insulation Option	Partially Insulated
-------------------	---------------------

Operation/Application

Compatible With Wire Base Material	Copper
Compatible With Wire Plating Material	Tin

Other

EU RoHS Compliance	Compliant
EU ELV Compliance	Compliant

Product Compliance

[For compliance documentation, visit the product page on TE.com>](#)

EU RoHS Directive 2011/65/EU	Compliant
EU ELV Directive 2000/53/EC	Compliant
China RoHS 2 Directive MIIT Order No 32, 2016	No Restricted Materials Above Threshold
EU REACH Regulation (EC) No. 1907/2006	Current ECHA Candidate List: JUNE 2024 (241) Candidate List Declared Against: JUNE 2024 (241) Does not contain REACH SVHC
Halogen Content	Not Low Halogen - contains Br or Cl > 900 ppm.
Solder Process Capability	Not applicable for solder process capability

Product Compliance Disclaimer

This information is provided based on reasonable inquiry of our suppliers and represents our current actual knowledge based on the information they provided. This information is subject to change. The part numbers that TE has identified as EU RoHS compliant have a maximum concentration of 0.1% by weight in homogenous materials for lead, hexavalent chromium, mercury, PBB, PBDE, DBP, BBP, DEHP, DIBP, and 0.01% for cadmium, or qualify for an exemption to these limits as defined in the Annexes of Directive 2011/65/EU (RoHS2). Finished electrical and electronic equipment products will be CE marked as required by Directive 2011/65/EU. Components may not be CE marked. Additionally, the part numbers that TE has identified as EU ELV compliant have a maximum concentration of 0.1% by weight in homogenous materials for lead, hexavalent chromium, and mercury, and 0.01% for cadmium, or qualify for an exemption to these limits as defined in the Annexes of Directive 2000/53/EC (ELV). Regarding the REACH Regulation, the information TE provides on SVHC in articles for this part number is based on the latest European Chemicals Agency (ECHA) 'Guidance on requirements for substances in articles' posted at this URL: <https://echa.europa.eu/guidance-documents/guidance-on-reach>

Compatible Parts

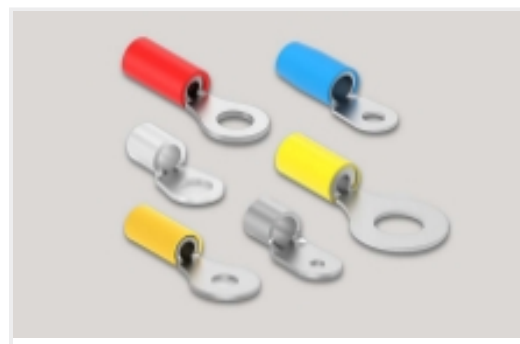
Also in the Series | **PLASTI-GRIP**



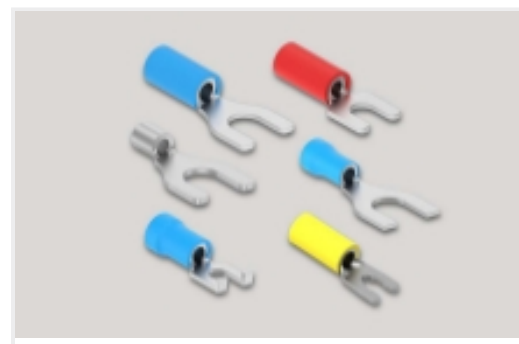
Compression Connectors(3)



Crimp Wire Pins, Tabs & Ferrules(20)



Ring Terminals(310)



Spade Terminals(159)

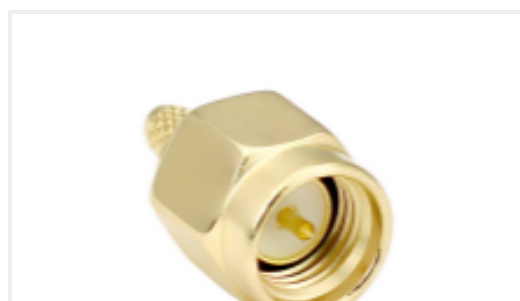


Splices(45)

Customers Also Bought



TE Part #207441-7
METRIMATE PIN HEADER ASSY,9P



TE Part #CONSMA007-G
SMA Plug 50 Ohm Cable Crimp



TE Part #CONSMA011-G
SMA Jack 50 Ohm Cable Crimp



TE Part #1-770186-1
12P MINI UMNL ASSY VO SNAU LF



TE Part #117451-000
222K121-25/225-0



TE Part #60878-2
250 FASTON REC 22-18 AWG TPBR



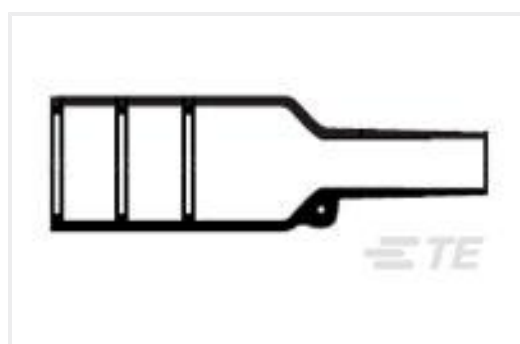
TE Part #5-104068-4
40 SYSTEM 50 HDR DRST SHRD



TE Part #1-794072-1
24P MINI UMNL HDR W/DH AU LF



TE Part #2063388-1
TOOL, EXTRACTION



TE Part #634051-000
202K121-25/225-0

Documents



Product Drawings

[PG SPR SPD 22-16COMM22-18MIL 6](#)

English

CAD Files

[3D PDF](#)

English

Customer View Model

[ENG_CVM_8-52949-1_N1.2d_dxf.zip](#)

English

Customer View Model

[ENG_CVM_8-52949-1_N1.3d_igs.zip](#)

English

Customer View Model

[ENG_CVM_8-52949-1_N1.3d_stp.zip](#)

English

[3D PDF](#)

3D

Customer View Model

[ENG_CVM_CVM_8-52949-1_T.2d_dxf.zip](#)

English

Customer View Model

[ENG_CVM_CVM_8-52949-1_T.3d_igs.zip](#)

English

Customer View Model

[ENG_CVM_CVM_8-52949-1_T.3d_stp.zip](#)

English

By downloading the CAD file I accept and agree to the [Terms and Conditions](#) of use.

Product Specifications

[Application Specification](#)

English

Instruction Sheets

[AMP* PIDG* \(VINYL\) & PLASTI-GRIP* SHORT SPRING SPADE TERMINALS FOR BAR](#)

English

[Instruction Sheet \(U.S.\)](#)

English