

749879-5 ✓ ACTIVE

AMPLIMITE | AMPLIMITE 0.50 Series

TE Internal #: 749879-5

Plug, 30 – 28 AWG Solid Wire, .05 – .1 mm² Solid Wire, Cable-to-Panel, 50 Position, AMPLIMITE 0.50 Series, IDC D-Sub Connectors

[View on TE.com >](#)



Connectors > D-Shaped Connectors > D-Sub Connectors > IDC D-Sub Connectors > IDC D-Sub: Plug Assembly, Panel Mount, Signal, 1.27 mm



Connector & Housing Type: **Plug**

Solid Wire Size: **.05 – .1 mm²**

Shielded: **No**

Connector System: **Cable-to-Panel**

[All IDC D-Sub: Plug Assembly, Panel Mount, Signal, 1.27 mm \(4\)](#)

Features

Industry Standards

UL Flammability Rating	UL 94V-0
------------------------	----------

Termination Features

Termination Cover Method	Assembled
Termination Cover Type	Non Lacing
Termination Cover	With
Termination Method to Wire & Cable	Insulation Displacement (IDC)

Body Features

Cover Material	Thermoplastic
Ribbon Cable Centerline Spacing	1.27 mm[.025 in]
Primary Product Color	Black

Packaging Features

Packaging Quantity	6
Packaging Method	Tube

Mechanical Attachment

Mating Retention Type	Latch Blocks
Mounting Feature Plating Material	Nickel over Copper
Mounting Feature Material	Zinc
Mating Retention	With



Connector Mounting Type	Panel Mount
-------------------------	-------------

Contact Features

Contact Underplating Material	Palladium Nickel
Wire Contact Termination Area Plating Material	Tin-Lead
Contact Options	Installed
Contact Mating Area Plating Material	Gold or Gold Flash
Contact Base Material	Phosphor Bronze
Contact Current Rating (Max)	1 A

Housing Features

Housing Material	Thermoplastic
Centerline (Pitch)	1.27 mm[.05 in]

Operation/Application

Circuit Application	Signal
Shielded	No

Dimensions

Compatible Insulation Diameter Range	.74 – .91 mm[.029 – .036 in]
Compatible Insulation Diameter (Max)	.91 mm
Solid Wire Size	.05 – .1 mm ²
Wire Size	30 AWG, 28 AWG

Product Type Features

Connector & Housing Type	Plug
Connector System	Cable-to-Panel
Connector Product Type	Connector Assembly
Connector & Contact Terminates To	Wire & Cable

Configuration Features

Number of Positions	50
Number of Rows	2
Compatible With Wire & Cable Type	Ribbon Cable, Round Jacketed Cable

Usage Conditions

Operating Temperature Range	-55 – 105 °C[-67 – 221 °F]
-----------------------------	----------------------------

Other

EU RoHS Compliance	Not Compliant
--------------------	---------------



EU ELV Compliance

Not Compliant

Product Compliance

[For compliance documentation, visit the product page on TE.com>](#)

EU RoHS Directive 2011/65/EU

Not Compliant

EU ELV Directive 2000/53/EC

Not Compliant

China RoHS 2 Directive MIIT Order No 32, 2016

Restricted Materials Above Threshold

EU REACH Regulation (EC) No. 1907/2006

Current ECHA Candidate List: JUNE 2024 (241)
 Candidate List Declared Against: DEC 2012 (138)
 SVHC > Threshold:
 Not Yet Reviewed

Halogen Content

Not Low Halogen - contains Br or Cl > 900 ppm.

Solder Process Capability

Not applicable for solder process capability

Product Compliance Disclaimer

This information is provided based on reasonable inquiry of our suppliers and represents our current actual knowledge based on the information they provided. This information is subject to change. The part numbers that TE has identified as EU RoHS compliant have a maximum concentration of 0.1% by weight in homogenous materials for lead, hexavalent chromium, mercury, PBB, PBDE, DBP, BBP, DEHP, DIBP, and 0.01% for cadmium, or qualify for an exemption to these limits as defined in the Annexes of Directive 2011/65/EU (RoHS2). Finished electrical and electronic equipment products will be CE marked as required by Directive 2011/65/EU. Components may not be CE marked. Additionally, the part numbers that TE has identified as EU ELV compliant have a maximum concentration of 0.1% by weight in homogenous materials for lead, hexavalent chromium, and mercury, and 0.01% for cadmium, or qualify for an exemption to these limits as defined in the Annexes of Directive 2000/53/EC (ELV). Regarding the REACH Regulations, TE's information on SVHC in articles for this part number is still based on the European Chemical Agency (ECHA) 'Guidance on requirements for substances in articles' (Version: 2, April 2011), applying the 0.1% weight on weight concentration threshold at the finished product level. TE is aware of the European Court of Justice ruling of September 10th, 2015 also known as O5A (Once An Article Always An Article) stating that, in case of 'complex object', the threshold for a SVHC must be applied to both the product as a whole and simultaneously to each of the articles forming part of its composition. TE has evaluated this ruling based on the new ECHA "Guidance on requirements for substances in articles" (June 2017, version 4.0) and will be updating its statements accordingly.

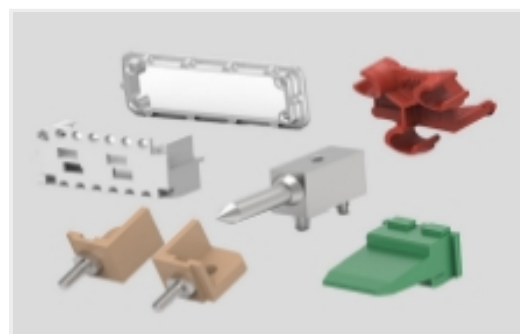
Also in the Series | **AMPLIMITE 0.50 Series**



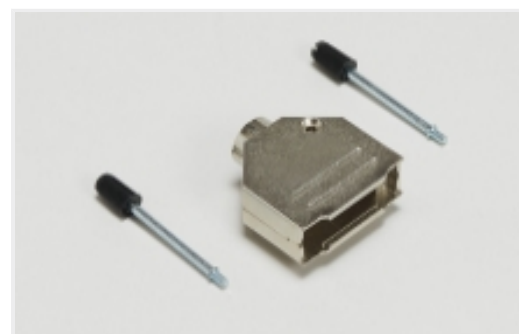
Connector Backshells(31)



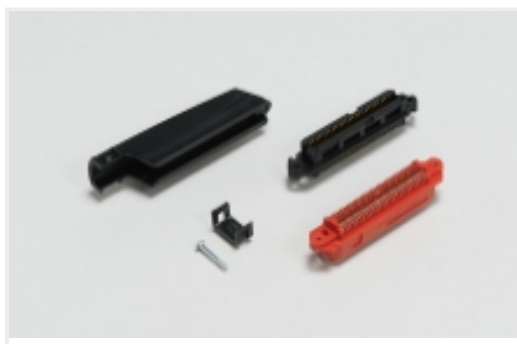
Connector Caps & Covers(20)



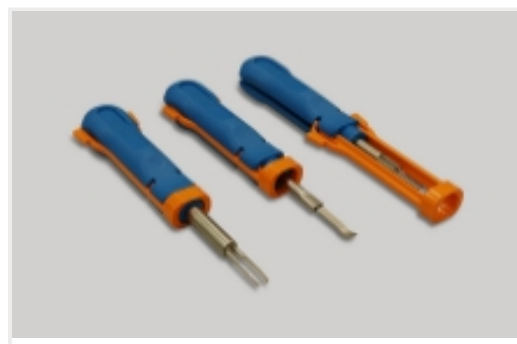
Connector Hardware(7)



D-Sub Backshells & Clamps(31)



IDC D-Sub Connectors(69)

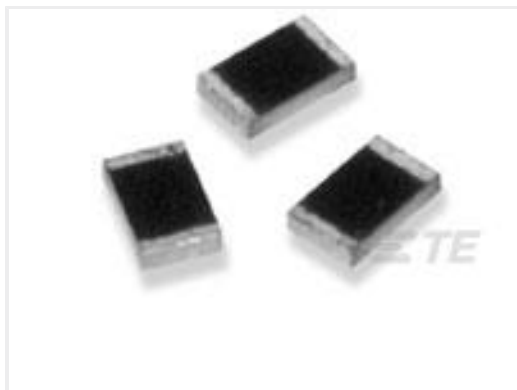
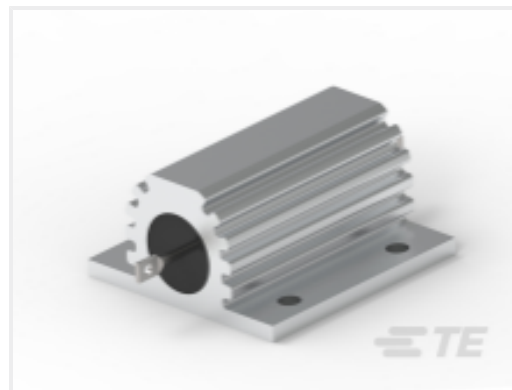
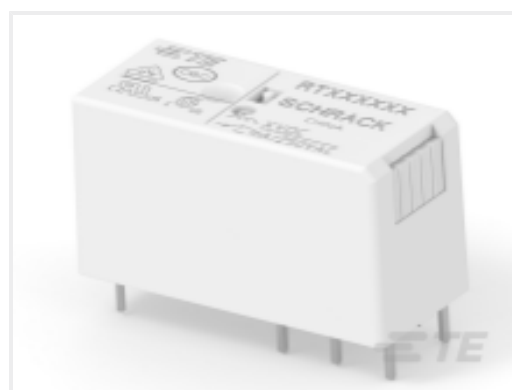


Insertion & Extraction Tools(1)



PCB D-Sub Connectors(172)

Customers Also Bought

TE Part #3-1879267-8
RP 2B 909K 0.1% 15PPM 1K RLTE Part #4-1879510-4
CRGH0805 1% 3K24 0.33WTE Part #4-1676625-2
HSA25 12K 5%TE Part #6-1676731-4
RN 0805 13K3 0.1% 5PPM 1K RLTE Part #2102351-4
CeeLok FAS-T, Recept, Kit, PCB,ZnNi,ATE Part #102920-1
MOD IV RECP PLTD 30 DPLXTE Part #1-1649328-9
RTD34005TE Part #1-102393-1
26 AMPMODU MT ASSY DR .100CLTE Part #DTS24F23-55PD
RECP ASSY

Documents

Product Drawings

[50 50SR PNL MNT PLUG ASSY](#)

English

CAD Files

[Customer View Model](#)

[ENG_CVM_CVM_749879-5_J.3d_igs.zip](#)

English

[Customer View Model](#)



[ENG_CVM_CVM_749879-5_J.3d_stp.zip](#)

English

Customer View Model

[ENG_CVM_CVM_749879-5_J.2d_dxf.zip](#)

English

3D PDF

3D

Customer View Model

[ENG_CVM_749879-5_J.3d_igs.zip](#)

English

Customer View Model

[ENG_CVM_749879-5_J.3d_stp.zip](#)

English

Customer View Model

[ENG_CVM_749879-5_J.2d_dxf.zip](#)

English

3D PDF

English

By downloading the CAD file I accept and agree to the [Terms and Conditions](#) of use.

Product Specifications

[Application Specification](#)

English

Agency Approvals

[UL](#)

English