

626213-1 ✓ ACTIVE

FASTIN-FASTON | FASTIN-FASTON 312

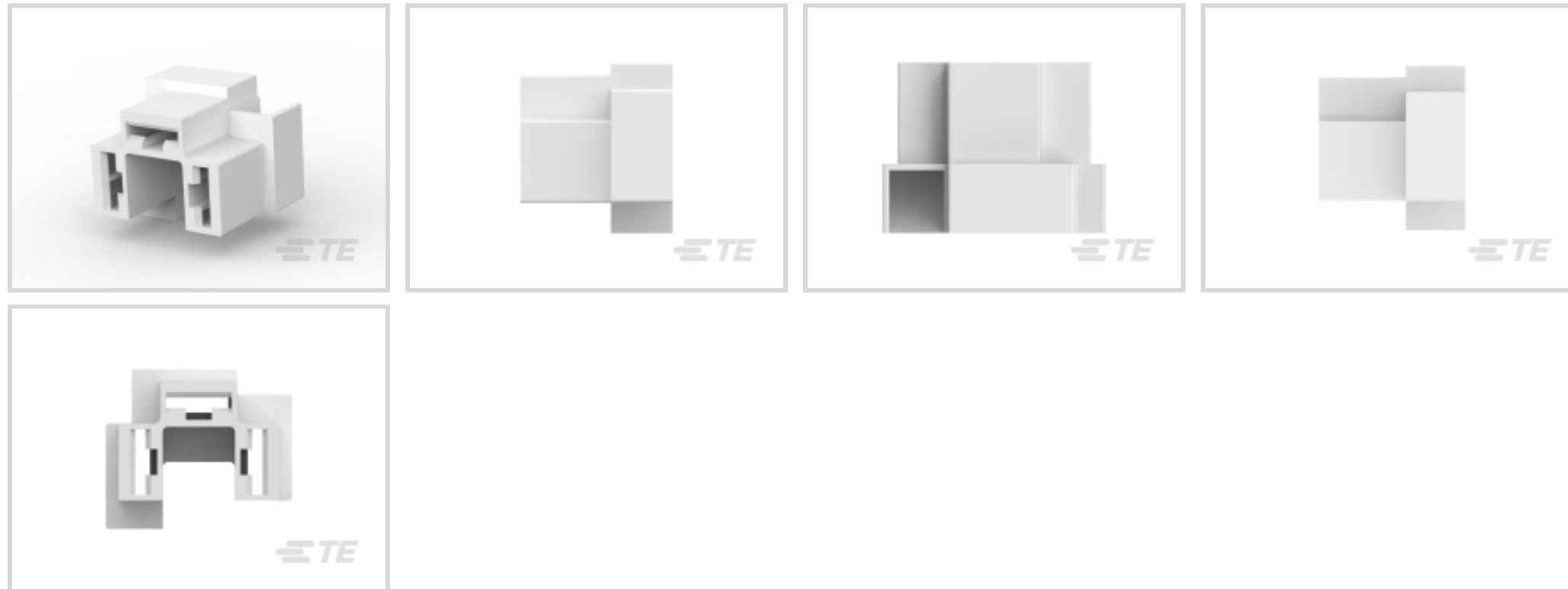
TE Internal #: 626213-1

Receptacle, Receptacle, 3 Position, Straight, Natural, Nylon, Cable
Mount (Free-Hanging), Carton, FASTIN-FASTON 312, Crimp
Terminal Housings

[View on TE.com >](#)



Terminals & Splices > Terminal Housings, Insulation Sleeves & Blocks > Crimp Terminal Housings



Terminal Type: **Receptacle**

Connector & Housing Type: **Receptacle**

Number of Positions: **3**

Terminal Orientation: **Straight**

Primary Product Color: **Natural**

Features

Dimensions

Product Length	20.4 mm [.803 in]
----------------	-------------------

Packaging Features

Packaging Quantity	2800
Packaging Method	Carton

Product Type Features

Sealable	No
Connector & Housing Type	Receptacle

Configuration Features

Number of Positions	3
---------------------	---

Body Features

Primary Product Color	Natural
-----------------------	---------

Contact Features

Terminal Type	Receptacle
---------------	------------



Terminal Orientation	Straight
----------------------	----------

Contact Mating Retention	Without
--------------------------	---------

Mechanical Attachment

Mating Alignment	With
------------------	------

Connector Mounting Type	Cable Mount (Free-Hanging)
-------------------------	----------------------------

Housing Features

Housing Material	Nylon
------------------	-------

Centerline (Pitch)	8.4 mm [.33 in]
--------------------	-----------------

Usage Conditions

Operating Temperature Range	-40 – 105 °C [-40 – 221 °F]
-----------------------------	-----------------------------

Other

EU RoHS Compliance	Compliant
--------------------	-----------

EU ELV Compliance	Compliant
-------------------	-----------

Product Compliance

[For compliance documentation, visit the product page on TE.com>](#)

EU RoHS Directive 2011/65/EU	Compliant
------------------------------	-----------

EU ELV Directive 2000/53/EC	Compliant
-----------------------------	-----------

China RoHS 2 Directive MIIT Order No 32, 2016	No Restricted Materials Above Threshold
---	---

EU REACH Regulation (EC) No. 1907/2006	Current ECHA Candidate List: JUNE 2024 (241) Candidate List Declared Against: JUNE 2024 (241) Does not contain REACH SVHC
--	---

Halogen Content	Low Halogen - Br, Cl, F, I < 900 ppm per homogenous material. Also BFR/CFR/PVC Free
-----------------	---

Solder Process Capability	Not reviewed for solder process capability
---------------------------	--

Product Compliance Disclaimer

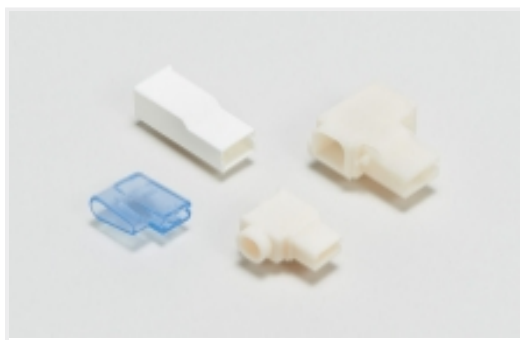
This information is provided based on reasonable inquiry of our suppliers and represents our current actual knowledge based on the information they provided. This information is subject to change. The part numbers that TE has identified as EU RoHS compliant have a maximum concentration of 0.1% by weight in homogenous materials for lead, hexavalent chromium, mercury, PBB, PBDE, DBP, BBP, DEHP, DIBP, and 0.01% for cadmium, or qualify for an exemption to these limits as defined in the Annexes of Directive 2011/65/EU (RoHS2). Finished electrical and electronic equipment products will be CE marked as required by Directive 2011/65/EU. Components may not be CE marked. Additionally, the part numbers that TE has identified as EU ELV compliant have a maximum concentration of 0.1% by weight in homogenous materials for lead, hexavalent chromium, and mercury, and 0.01% for cadmium, or qualify for an exemption to these limits as defined in the Annexes of Directive 2000/53/EC (ELV). Regarding the REACH Regulation, the information TE provides on SVHC in articles for this part number is based on the latest European Chemicals Agency (ECHA) 'Guidance on

requirements for substances in articles' posted at this URL: <https://echa.europa.eu/guidance-documents/guidance-on-reach>

Compatible Parts



Also in the Series | **FASTIN-FASTON 312**



Crimp Terminal Housings(12)

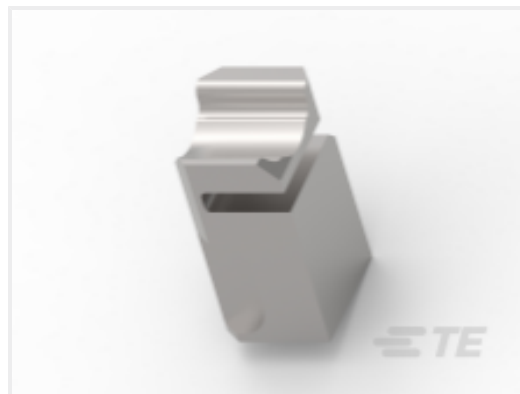


Quick Disconnects(9)

Customers Also Bought



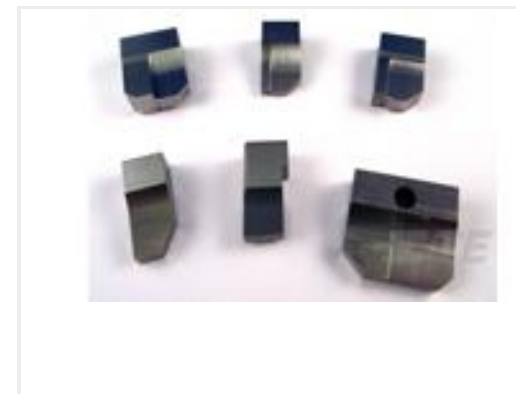
TE Part #626584-1
SPLICE 1500/5000 CMA BR



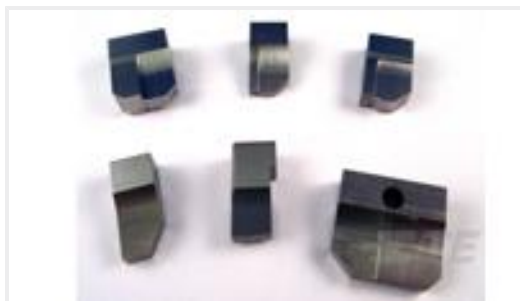
TE Part #1-1803095-9
FLOATING SHEAR, FRONT



TE Part #1-1633620-2
ANVIL, COMBINATION



TE Part #6-1633139-8
ANVIL, COMBINATION



TE Part #3-1633129-6
ANVIL, COMBINATION .062



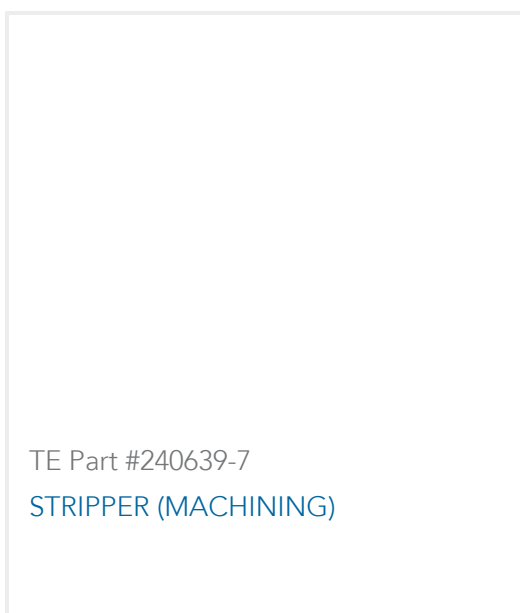
TE Part #4-1633965-6
INSULATION CRIMPER



TE Part #1803125-2
CRIMPER, WIRE F NON-TYPICAL RK
VALUES



TE Part #CAT-T4827-CH8172
Timer Connector Housing



TE Part #240639-7
STRIPPER (MACHINING)

Documents

Product Drawings

[FASTIN-ON 0.312 FLAG REC NYLON 6.6](#)

English

CAD Files

Customer View Model

[ENG_CVM_626213-1_C.3d_igs.zip](#)

English

Customer View Model



[ENG_CVM_626213-1_C.3d_stp.zip](#)

English

Customer View Model

[ENG_CVM_626213-1_C.2d_dxf.zip](#)

English

3D PDF

English

3D PDF

3D

Customer View Model

[ENG_CVM_CVM_626213-1_F.2d_dxf.zip](#)

English

Customer View Model

[ENG_CVM_CVM_626213-1_F.3d_igs.zip](#)

English

Customer View Model

[ENG_CVM_CVM_626213-1_F.3d_stp.zip](#)

English

By downloading the CAD file I accept and agree to the [Terms and Conditions](#) of use.