



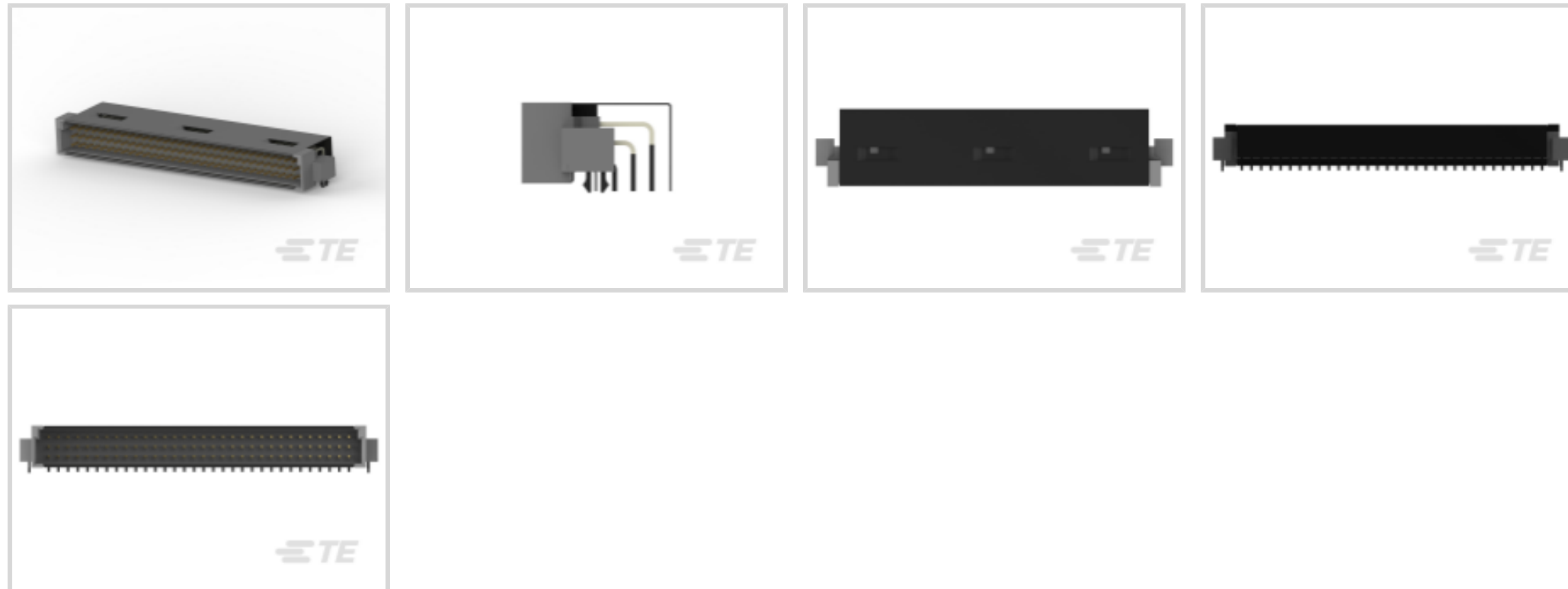
**EUROCARD**

TE Internal #: 5536148-5

Plug, Board-to-Board, 96 Position, 2.54 mm [.1 in] Centerline, Printed Circuit Board, 3 Row, Right Angle, 32 Column, Eurocard Connectors

[View on TE.com >](#)

Connectors > PCB Connectors > Backplane Connectors > Eurocard Connectors



Connector & Housing Type: **Plug**

Connector System: **Board-to-Board**

Termination Post & Tail Length: **2.64 mm [.104 in]**

Number of Positions: **96**

Centerline (Pitch): **2.54 mm [.1 in]**

**Features**

**Product Type Features**

Connector & Housing Type	Plug
Connector System	Board-to-Board
Connector & Contact Terminates To	Printed Circuit Board
DIN Size	Standard
DIN Level	II

**Configuration Features**

Number of Positions	96
Number of Rows	3
PCB Mount Orientation	Right Angle
Number of Columns	32
Rows Loaded	A, B, C

**Contact Features**

Contact Current Rating (Max)	1 A, 1.5 A
------------------------------	------------

**Termination Features**



Termination Post & Tail Length	2.64 mm[.104 in]
--------------------------------	------------------

### Mechanical Attachment

Connector Mounting Type	Board Mount
-------------------------	-------------

### Housing Features

Centerline (Pitch)	2.54 mm[.1 in]
--------------------	----------------

### Dimensions

Row-to-Row Spacing	2.54 mm[.1 in]
--------------------	----------------

### Usage Conditions

Operating Temperature Range	-55 – 125 °C[-67 – 257 °F]
-----------------------------	----------------------------

### Operation/Application

Circuit Application	Signal
---------------------	--------

## Product Compliance

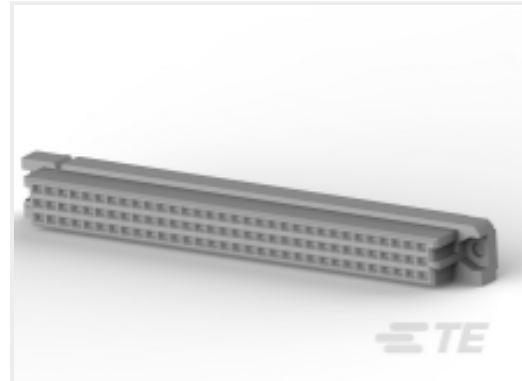
[For compliance documentation, visit the product page on TE.com>](#)

EU RoHS Directive 2011/65/EU	Compliant
EU ELV Directive 2000/53/EC	Compliant
China RoHS 2 Directive MIIT Order No 32, 2016	有害物质含量符合标准要求 No Restricted Substance(s) Above Threshold
EU REACH Regulation (EC) No. 1907/2006	Current ECHA Candidate List: JUNE 2025 (250) Candidate List Declared Against: JUNE 2025 (250) Does not contain REACH SVHC
Halogen Content	Low Halogen - Br, Cl, F < 900 ppm per homogenous material. Also BFR/CFR/PVC Free
Solder Process Capability	Reflow solder capable to 260°C

#### Product Compliance Disclaimer

This information is provided based on reasonable inquiry of our suppliers and represents our current actual knowledge based on the information they provided. This information is subject to change. The part numbers that TE has identified as EU RoHS compliant have a maximum concentration of 0.1% by weight in homogenous materials for lead, hexavalent chromium, mercury, PBB, PBDE, DBP, BBP, DEHP, DIBP, and 0.01% for cadmium, or qualify for an exemption to these limits as defined in the Annexes of Directive 2011/65/EU (RoHS2). Finished electrical and electronic equipment products will be CE marked as required by Directive 2011/65/EU. Components may not be CE marked. Additionally, the part numbers that TE has identified as EU ELV compliant have a maximum concentration of 0.1% by weight in homogenous materials for lead, hexavalent chromium, and mercury, and 0.01% for cadmium, or qualify for an exemption to these limits as defined in the Annexes of Directive 2000/53/EC (ELV). Regarding the REACH Regulation, the information TE provides on SVHC in articles for this part number is based on the latest European Chemicals Agency (ECHA) 'Guidance on requirements for substances in articles' posted at this URL: <https://echa.europa.eu/guidance-documents/guidance-on-reach>

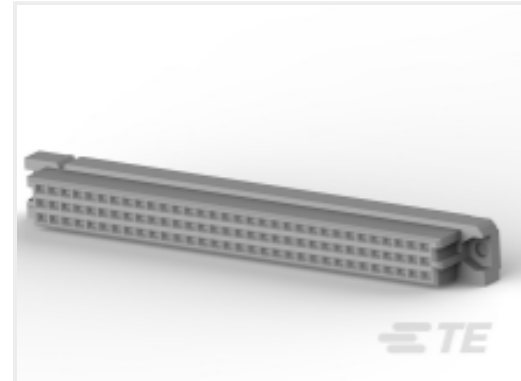
## Compatible Parts



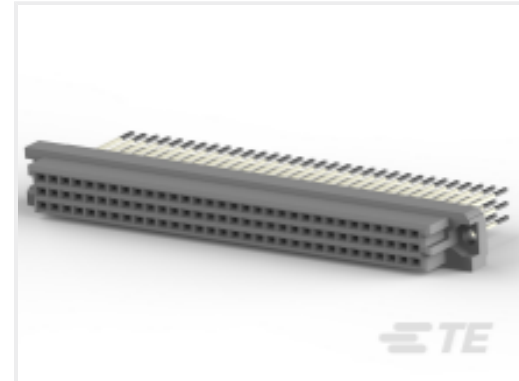
TE Part # 5535089-5  
ASSEMBLY,RECEPTACLE,EUROCARD,TYPE T



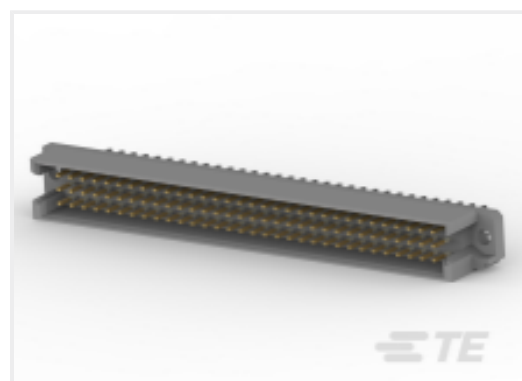
TE Part # 5536153-5  
ASSY,RECPT,ENH.TYPE C,EUROCARD,L-FREE,5



TE Part # 5535056-5  
ASSY,RECPT,EUROCARD,TYPE C,L-FREE,96,.19



TE Part # 5148059-5  
ASSY,RECEPTACLE,EUROCARD,TYPE C,LEAD-FRE



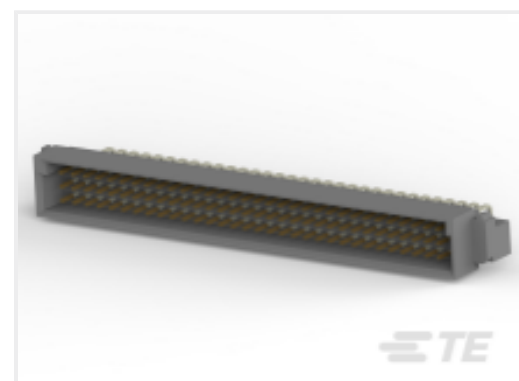
TE Part # 5650889-5  
ASSY,PIN,EUROCARD,TYPE R,LEAD-



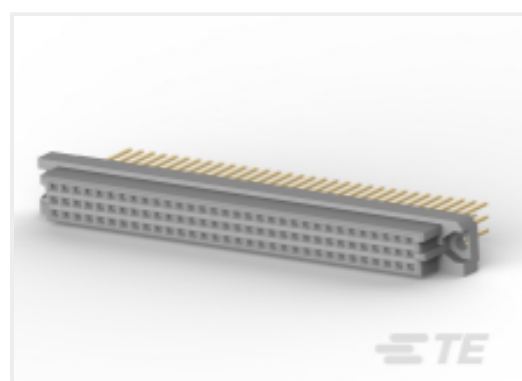
TE Part # 650992-5  
0% ENHNCD EURO RECEPT AP ASSY



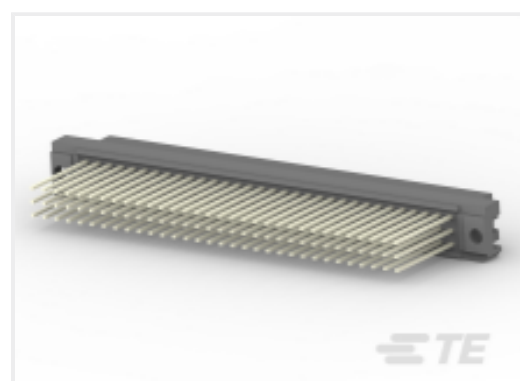
TE Part # 5536154-5  
ASSY,RECPT,ENH."C",EUROCARD,L-



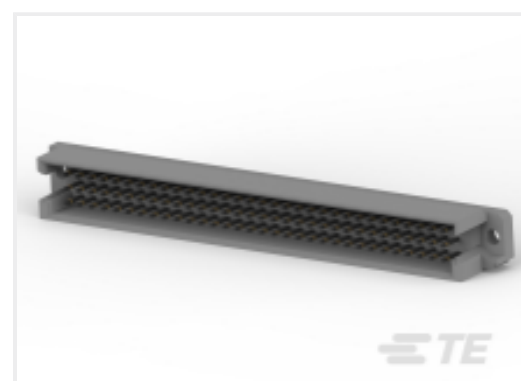
TE Part # 5650473-5  
ASSY,PIN,EUROCARD,TYPE C,LEAD-



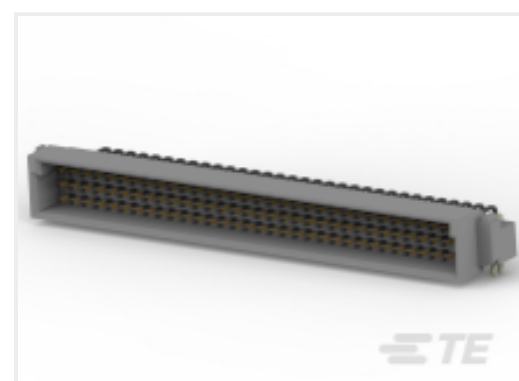
TE Part # 1-148057-5  
0% EURO TYP C RECP 13MM ASSY



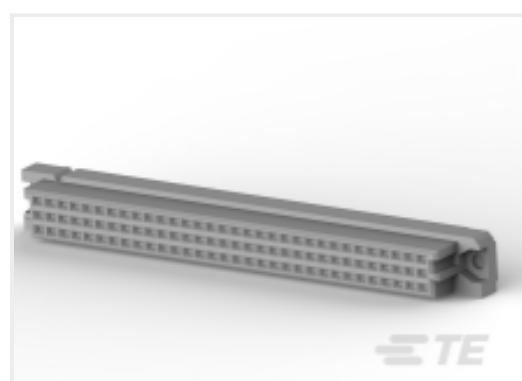
TE Part # 1-148059-5  
0% EURO TYP C RECP 17MM ASSY



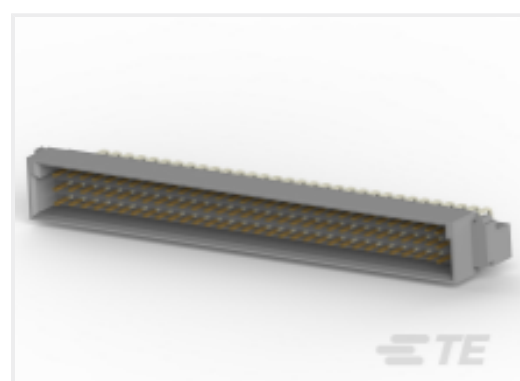
TE Part # 5650908-5  
ASSY,PIN,EUROCARD,TYPE R,LEAD-



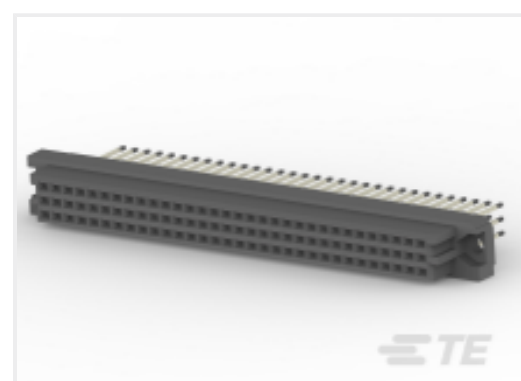
TE Part # 5650913-5  
ASSY,PIN,EUROCARD,TYPE C,LEAD-



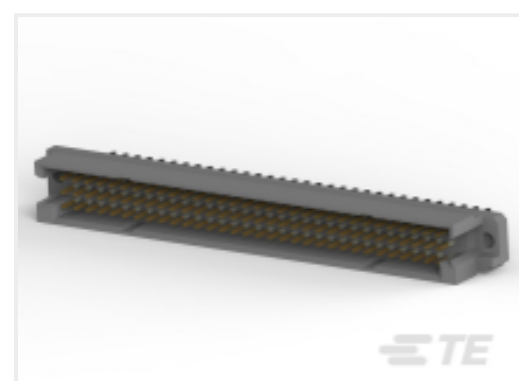
TE Part # 5535043-4  
ASSY,RECEPTACLE,EUROCARD,TYPE C



TE Part # 5536437-4  
ASSY,PIN,EUROCARD,TYPE C,LEAD-FREE,96 PO



TE Part # 5148057-5  
ASSY,RECEPTACLE,EUROCARD,TYPE C,LEAD-FRE



TE Part # 650889-5  
0% EURO TYPE R PIN AP ASSY



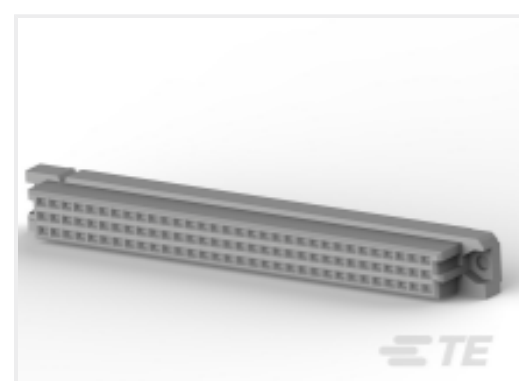
TE Part # 650913-5  
0% EURO TYPE C PIN BL ASSY



TE Part # 650947-5  
0% EURO TYPE C PIN ST ASSY



TE Part # 5536155-5  
ASSY,RECPT,ENH."C",EUROCARD,L-



TE Part # 5535032-4  
ASSY,RECEPTACLE,EUROCARD,TYPE C

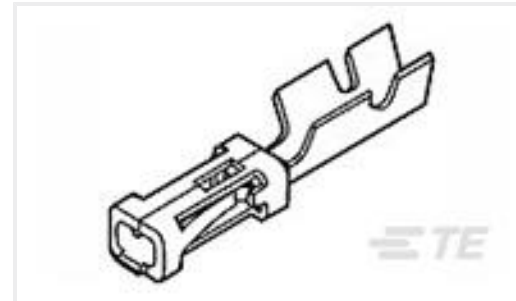
## Customers Also Bought



TE Part #E37387-000  
SO175-3-55-22-90



TE Part #T4071017031-001  
M8.FMLE.PNLREAR.3POS.STR WIRE



TE Part #6-87756-8  
MOD IV RECP LP



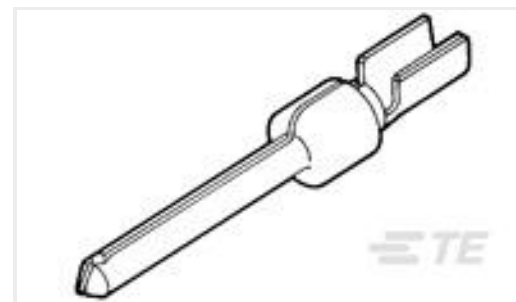
TE Part #102387-7  
30 MODIV HSG COMP DR .100 POL



TE Part #205204-4  
CRIMP SNAP PLUG ASSY,SIZE 1



TE Part #3-641437-3  
03P MTA156 PSTD CONN ASSY RED



TE Part #1658541-1  
PIN CONT DUPL PLT STRIP HD-20



TE Part #1658671-1  
HDP-22,PLUG,SIZE 2, 26 POSN



TE Part #1-2273000-3  
M8 x 1.0 straight plug Pigtail



TE Part #5748676-1  
DIE CAST CBL CLMP KIT,SZ 1

## Documents

### Product Drawings

[ASSY,PIN,ENH.TYPE C,EUROCARD,L-FREE,5ROW](#)

English

### CAD Files

Customer View Model

[ENG\\_CVM\\_CVM\\_5536148-5\\_O.2d\\_dxf.zip](#)

English

3D PDF

3D

Customer View Model

[ENG\\_CVM\\_CVM\\_5536148-5\\_O.3d\\_igs.zip](#)

English

Customer View Model

[ENG\\_CVM\\_CVM\\_5536148-5\\_O.3d\\_stp.zip](#)

English

By downloading the CAD file I accept and agree to the [Terms and Conditions](#) of use.



## Agency Approvals

UL

English