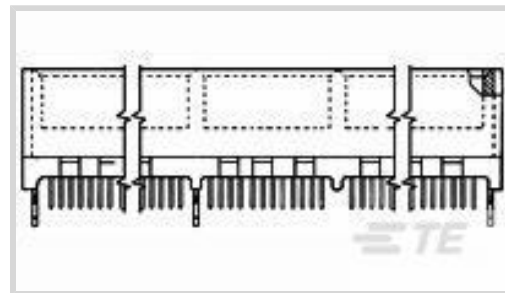




Connectors > PCB Connectors > Card Edge Connectors > PCI & PCI Express Connectors



Connector System: **Board-to-Board**

Number of Positions: **184**

Centerline (Pitch): **1.27 mm [.05 in]**

Termination Post & Tail Length: **2.54 mm [.1 in]**

Contact Mating Area Plating Material Thickness: **[ 30 µin ]**

## Features

### Electrical Characteristics

Operating Voltage	203 VAC
-------------------	---------

### Industry Standards

Bus Type	PCI
----------	-----

### Mechanical Attachment

Connector Mounting Type	Board Mount
PCB Mount Retention Type	Hold-Down Post

### Packaging Features

Packaging Method	Box
Packaging Quantity	35

### Dimensions

PCB Thickness (Accepted)	1.57 mm[.062 in]
Connector Length	128 mm[5.039 in]
Connector Height	15.5 mm[.613 in]
Connector Width	8.88 mm[.35 in]

### Body Features

PCB Retention Feature Material	Brass
PCB Retention Feature Plating Material	Tin
Product Weight	21.627 g
Primary Product Color	Natural



### Contact Features

PCB Contact Termination Area Plating Material Thickness	2.537 $\mu$ m
Contact Underplating Material	Nickel
Contact Mating Area Plating Material	Gold
Contact Base Material	Phosphor Bronze
PCB Contact Termination Area Plating Material	Tin
	30 $\mu$ in

### Termination Features

Termination Method to PCB	Through Hole - Solder
Termination Post & Tail Length	2.54 mm[.1 in]

### Housing Features

Housing Material	High Temperature Thermoplastic
Centerline (Pitch)	1.27 mm[.05 in]

### Configuration Features

Number of PCB Mount Retention Features	3
Number of Positions	184
PCB Mount Orientation	Vertical
Ejector	Without

### Product Type Features

Connector & Contact Terminates To	Printed Circuit Board
Connector System	Board-to-Board

### Usage Conditions

Operating Temperature Range	-55 – 85 $^{\circ}$ C[-67 – 185 $^{\circ}$ F]
-----------------------------	---

### Operation/Application

Circuit Application	Signal
---------------------	--------

### Other

EU RoHS Compliance	Compliant
EU ELV Compliance	Compliant

### Product Compliance

[For compliance documentation, visit the product page on TE.com>](#)

EU RoHS Directive 2011/65/EU	Compliant
------------------------------	-----------



EU ELV Directive 2000/53/EC	Compliant
China RoHS 2 Directive MIIT Order No 32, 2016	No Restricted Materials Above Threshold
EU REACH Regulation (EC) No. 1907/2006	Current ECHA Candidate List: JUNE 2024 (241) Candidate List Declared Against: JAN 2021 (211) Does not contain REACH SVHC
Halogen Content	Not Low Halogen - contains Br or Cl > 900 ppm.
Solder Process Capability	Wave solder capable to 265°C

Product Compliance Disclaimer

This information is provided based on reasonable inquiry of our suppliers and represents our current actual knowledge based on the information they provided. This information is subject to change. The part numbers that TE has identified as EU RoHS compliant have a maximum concentration of 0.1% by weight in homogenous materials for lead, hexavalent chromium, mercury, PBB, PBDE, DBP, BBP, DEHP, DIBP, and 0.01% for cadmium, or qualify for an exemption to these limits as defined in the Annexes of Directive 2011/65/EU (RoHS2). Finished electrical and electronic equipment products will be CE marked as required by Directive 2011/65/EU. Components may not be CE marked. Additionally, the part numbers that TE has identified as EU ELV compliant have a maximum concentration of 0.1% by weight in homogenous materials for lead, hexavalent chromium, and mercury, and 0.01% for cadmium, or qualify for an exemption to these limits as defined in the Annexes of Directive 2000/53/EC (ELV). Regarding the REACH Regulation, the information TE provides on SVHC in articles for this part number is based on the latest European Chemicals Agency (ECHA) 'Guidance on requirements for substances in articles' posted at this URL: <https://echa.europa.eu/guidance-documents/guidance-on-reach>

### Compatible Parts



TE Part # 1734774-1  
PCI EXP 3.1L 36 POS WHT G/F

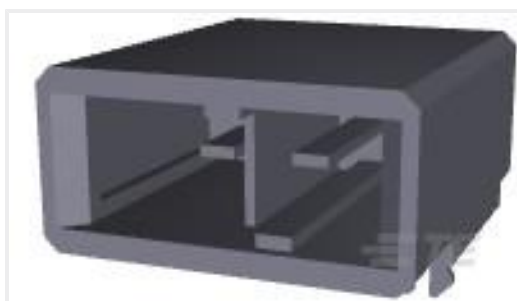


TE Part # 5-2337939-4  
PCIE GEN4 CON,SMT,164POS,30u", MYLAR,HT



TE Part # 5145154-1  
CONNECTOR, 60 DUAL POSITION, .

### Customers Also Bought



TE Part #1-179276-5  
DYNAMIC 3200 HDR ASSY 2P H



TE Part #9-1393222-1  
V23061B1005A301=MINISTARKSTROM



TE Part #1-1393210-3  
T9AS1D12-12



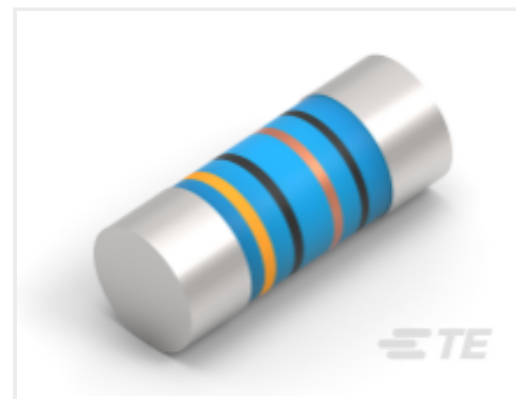
TE Part #6-1879354-6  
RR03 5% 160R AMMO



TE Part #CAT-C73765-M1E  
M12 Field Installable Unshielded



TE Part #CGE271N00000020000  
940 RECEPTACLE ANGLED,  
ROTATABLE,SPEEDTEC



TE Part #3-2176315-8  
MELF SMA\_A 100R 1% 50PPM 0204 0.4  
W



TE Part #1-1437658-1  
8PCV-07-006=#8 TRIBARRIER



TE Part #1571528-1  
TACT SWITCH,SMT,JLEAD,3.8X6MM

## Documents

### Product Drawings

STANDARD EDGE .050 SERIES 92 DUAL ASSY

English

### CAD Files

3D PDF

English

Customer View Model

[ENG\\_CVM\\_5145169-4\\_B.2d\\_dxf.zip](#)

English

Customer View Model

[ENG\\_CVM\\_5145169-4\\_B.3d\\_igs.zip](#)

English

Customer View Model

[ENG\\_CVM\\_5145169-4\\_B.3d\\_stp.zip](#)

English

By downloading the CAD file I accept and agree to the [Terms and Conditions](#) of use.

### Product Specifications

Application Specification

English