



Passive Components > Resistors > Surface Mount Resistors > Metal Chip Resistor: Current Sense



Resistance Value: .01 Ω

Resistor Type: **Current Sensing Resistor**

Element Type: Foil

Package Size Code: 2512

Power Rating: 3 W

[All Metal Chip Resistor: Current Sense \(49\)](#)

Features

Electrical Characteristics

Resistance Value	.01 Ω
Power Rating	3 W
Passive Component Tolerance	1 %

Product Type Features

Resistor Type	Current Sensing Resistor
Element Type	Foil
Package Size Code	2512

Configuration Features

Number of Resistors	1
---------------------	---

Termination Features

Surface Mount Resistor Termination Type	Solder
Number of Terminations	2

Usage Conditions

Temperature Coefficient	± 75 ppm/ $^{\circ}\text{C}$
-------------------------	----------------------------------

Packaging Features

Packaging Method	Taped & Reeled
------------------	----------------

Other

EU RoHS Compliance	Compliant
--------------------	-----------

EU ELV Compliance	Compliant
-------------------	-----------

Product Compliance

[For compliance documentation, visit the product page on TE.com>](#)

EU RoHS Directive 2011/65/EU	Compliant
------------------------------	-----------

EU ELV Directive 2000/53/EC	Compliant
-----------------------------	-----------

China RoHS 2 Directive MIIT Order No 32, 2016	No Restricted Materials Above Threshold
---	---

EU REACH Regulation (EC) No. 1907/2006	Current ECHA Candidate List: JUNE 2024 (241) Candidate List Declared Against: JUL 2021 (219) Does not contain REACH SVHC
--	--

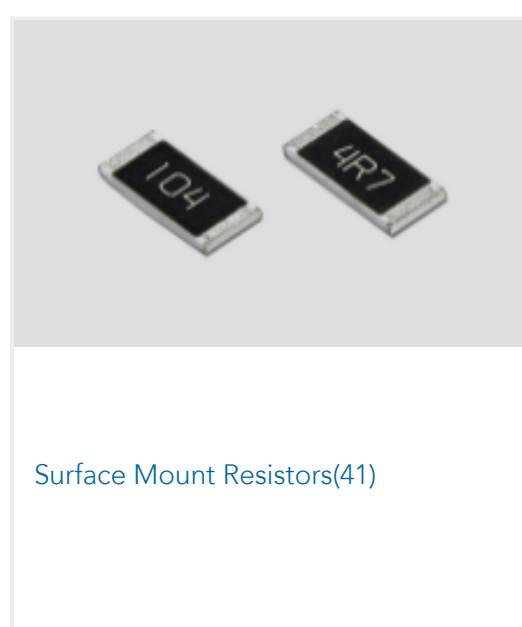
Halogen Content	Not Low Halogen - contains Br or Cl > 900 ppm.
-----------------	--

Solder Process Capability	Reflow solder capable to 260°C
---------------------------	--------------------------------

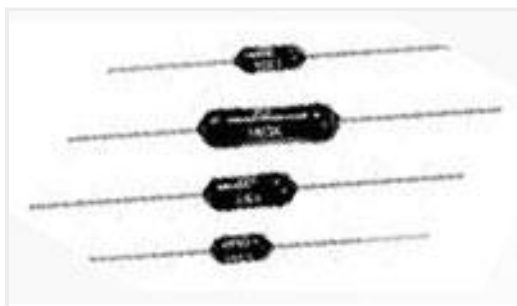
Product Compliance Disclaimer

This information is provided based on reasonable inquiry of our suppliers and represents our current actual knowledge based on the information they provided. This information is subject to change. The part numbers that TE has identified as EU RoHS compliant have a maximum concentration of 0.1% by weight in homogenous materials for lead, hexavalent chromium, mercury, PBB, PBDE, DBP, BBP, DEHP, DIBP, and 0.01% for cadmium, or qualify for an exemption to these limits as defined in the Annexes of Directive 2011/65/EU (RoHS2). Finished electrical and electronic equipment products will be CE marked as required by Directive 2011/65/EU. Components may not be CE marked. Additionally, the part numbers that TE has identified as EU ELV compliant have a maximum concentration of 0.1% by weight in homogenous materials for lead, hexavalent chromium, and mercury, and 0.01% for cadmium, or qualify for an exemption to these limits as defined in the Annexes of Directive 2000/53/EC (ELV). Regarding the REACH Regulation, the information TE provides on SVHC in articles for this part number is based on the latest European Chemicals Agency (ECHA) 'Guidance on requirements for substances in articles' posted at this URL: <https://echa.europa.eu/guidance-documents/guidance-on-reach>

Also in the Series | CGS TLR



Customers Also Bought



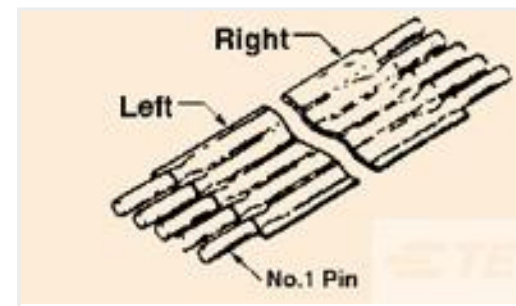
TE Part #7-1879648-1
H4P 287R 0.5% 100PPM



TE Part #7-1879354-5
RR03 5% 390R AMMO



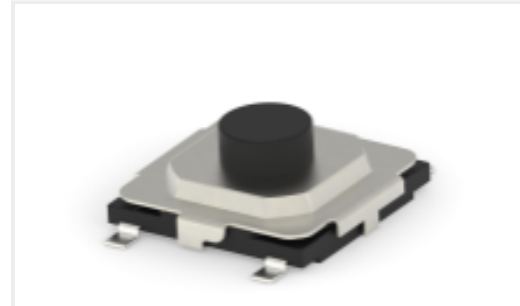
TE Part #9-1625971-5
HSA25 R01 10%



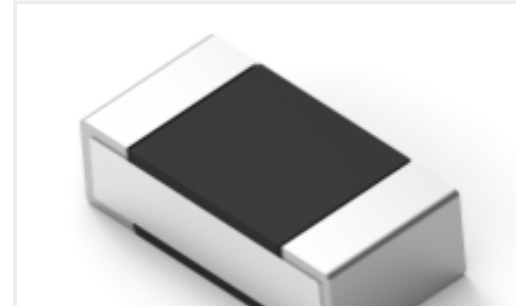
TE Part #3-1437162-8
FSP-12A-11



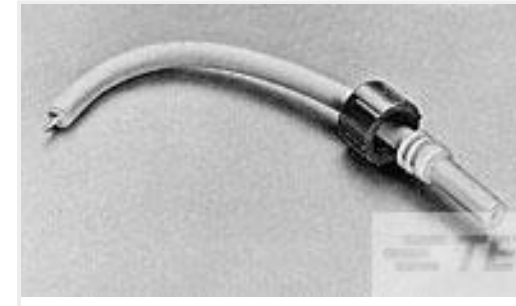
TE Part #1-1879353-9
RR02 5% 24K AMMO



TE Part #2337238-3
TACT MINI GW 5.2X5.2X2 160GF



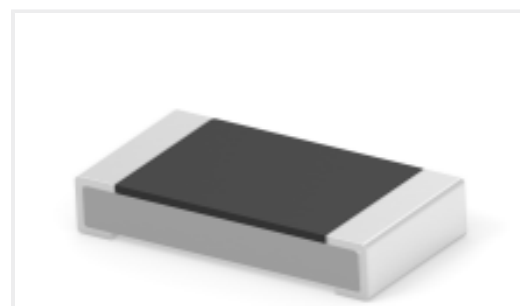
TE Part #3-2176307-2
RP 1E 0.1W 26K1 0.1% 25PPM 5K RL



TE Part #1-830611-0
LGH 1/2 SNGL MLD END



TE Part #7-2176305-3
RP 1E 0.1W 604R 0.1% 25PPM 5K RL



TE Part #2-2176392-9
RQ 1206 261K 0.1% 10PPM 5K RL

Documents

Product Drawings

[TLR 2512 3.0W R010 1% 75PPM 4K RL](#)

English

CAD Files

[3D PDF](#)

3D

Customer View Model

[ENG_CVM_CVM_5-2176166-1_BA.2d_dxf.zip](#)

English

Customer View Model

[ENG_CVM_CVM_5-2176166-1_BA.3d_igs.zip](#)

English

Customer View Model

[ENG_CVM_CVM_5-2176166-1_BA.3d_stp.zip](#)

English

By downloading the CAD file I accept and agree to the [Terms and Conditions](#) of use.

Datasheets & Catalog Pages



SMD Low Ohmic Current Sense Resistors - Type TLR Series

English