

5-1971793-5 ✓ ACTIVE

GRACE INERTIA 2.5

TE Internal #: 5-1971793-5

Housing, Plug, Wire-to-Board, UL 94V-0, 5 Position, 2.5 mm [.098 in]

Centerline, 1 Row, 50 VAC, GRACE INERTIA 2.5, Standard

Rectangular Connectors

[View on TE.com >](#)



Connectors > Rectangular Connectors > Standard Rectangular Connectors > STD Temp Sig GRACE INERTIA Plug



Connector Product Type: **Housing**

Connector & Housing Type: **Plug**

Connector System: **Wire-to-Board**

UL Flammability Rating: **UL 94V-0**

Number of Positions: **5**

[All STD Temp Sig GRACE INERTIA Plug \(63\)](#)

Features

Body Features

Primary Product Color	Black
-----------------------	-------

Identification Marking

Circuit Identification Feature	Without
--------------------------------	---------

Contact Features

Contact Layout	Inline
Contact Type	Socket

Packaging Features

Packaging Method	Bag
Packaging Quantity	900

Dimensions

Connector Width	5.88 mm[.231 in]
Connector Height	10.4 mm[.409 in]



Connector Length	13.2 mm[.52 in]
------------------	-----------------

Electrical Characteristics

Operating Voltage	50 VAC
-------------------	--------

Housing Features

Housing Material	Nylon 66 GF
Centerline (Pitch)	2.5 mm[.098 in]

Industry Standards

Compatible With Agency/Standards Products	UL
Compatible With Approved Standards Products	UL E28476
UL Flammability Rating	UL 94V-0

Product Type Features

Connector Product Type	Housing
Connector & Housing Type	Plug
Connector System	Wire-to-Board
Sealable	No
Connector & Contact Terminates To	Wire & Cable

Configuration Features

Number of Positions	5
Number of Rows	1

Mechanical Attachment

Connector Mounting Type	Cable Mount (Free-Hanging)
-------------------------	----------------------------

Usage Conditions

Operating Temperature Range	-30 – 105 °C[-22 – 221 °F]
-----------------------------	----------------------------

Operation/Application

Circuit Application	Signal
---------------------	--------

Other

EU RoHS Compliance	Compliant
EU ELV Compliance	Compliant

Product Compliance

[For compliance documentation, visit the product page on TE.com>](#)



EU RoHS Directive 2011/65/EU	Compliant
EU ELV Directive 2000/53/EC	Compliant
China RoHS 2 Directive MIIT Order No 32, 2016	No Restricted Materials Above Threshold
EU REACH Regulation (EC) No. 1907/2006	Current ECHA Candidate List: JUNE 2024 (241) Candidate List Declared Against: JUNE 2024 (241) Does not contain REACH SVHC
Halogen Content	Not Low Halogen - contains Br or Cl > 900 ppm.
Solder Process Capability	Not reviewed for solder process capability

Product Compliance Disclaimer

This information is provided based on reasonable inquiry of our suppliers and represents our current actual knowledge based on the information they provided. This information is subject to change. The part numbers that TE has identified as EU RoHS compliant have a maximum concentration of 0.1% by weight in homogenous materials for lead, hexavalent chromium, mercury, PBB, PBDE, DBP, BBP, DEHP, DIBP, and 0.01% for cadmium, or qualify for an exemption to these limits as defined in the Annexes of Directive 2011/65/EU (RoHS2). Finished electrical and electronic equipment products will be CE marked as required by Directive 2011/65/EU. Components may not be CE marked. Additionally, the part numbers that TE has identified as EU ELV compliant have a maximum concentration of 0.1% by weight in homogenous materials for lead, hexavalent chromium, and mercury, and 0.01% for cadmium, or qualify for an exemption to these limits as defined in the Annexes of Directive 2000/53/EC (ELV). Regarding the REACH Regulations, TE's information on SVHC in articles for this part number is still based on the European Chemical Agency (ECHA) 'Guidance on requirements for substances in articles' (Version: 2, April 2011), applying the 0.1% weight on weight concentration threshold at the finished product level. TE is aware of the European Court of Justice ruling of September 10th, 2015 also known as O5A (Once An Article Always An Article) stating that, in case of 'complex object', the threshold for a SVHC must be applied to both the product as a whole and simultaneously to each of the articles forming part of its composition. TE has evaluated this ruling based on the new ECHA "Guidance on requirements for substances in articles" (June 2017, version 4.0) and will be updating its statements accordingly.

Compatible Parts



TE Part # 5-2232546-3
GI2.5 HDR ASS 5P RED NO BOSS TAPE



TE Part # 5-1971794-2
GI2.5 TPA,5P



TE Part # 1554296-1
GI CONN 2.5 PLUG HSG 5P LEVER SPECIAL



TE Part # 5-2232546-2
GI2.5 HDR ASS 5P BL NO BOSS TAPE



TE Part # 5-2232546-4
GI2.5 HDR ASS 5P YEL NO BOSS TAPE



TE Part # 5-2232546-1
GI2.5 HDR ASS 5P NC NO BOSS TAPE



TE Part # 5-2232546-5
GI2.5 HDR ASS 5P BLK NO BOSS TAPE



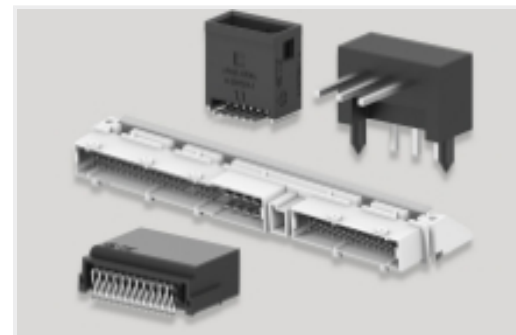
Also in the Series | GRACE INERTIA 2.5



Connector Contacts(6)



Connector Hardware(7)



PCB Headers & Receptacles(173)



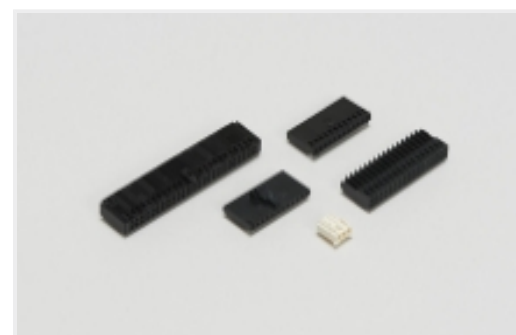
Power Contacts(2)



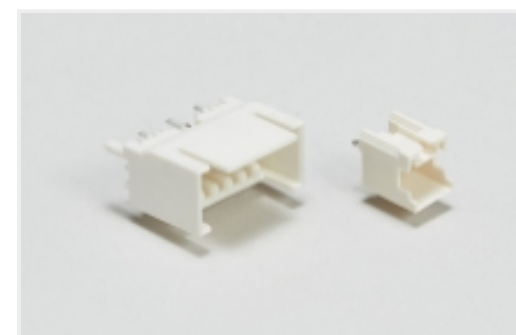
Rectangular Connector Housings(49)



Standard Rectangular Connectors(49)



Wire-to-Board Connector Assemblies & Housings(47)

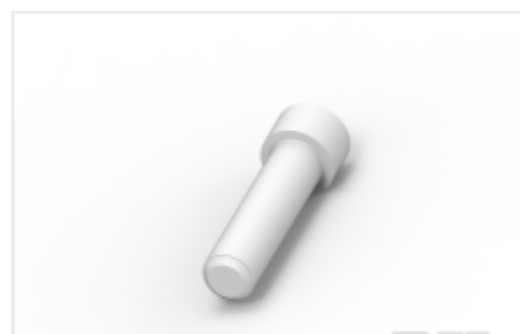


Wire-to-Board Headers & Receptacles (173)

Customers Also Bought



TE Part #CAT-AM71-CH8172
AMP SUPERSEAL 1.5MM,
CONNECTOR HOUSING



TE Part #114017-ZZ
SEALING PLUG, SIZE 12/16, WHT



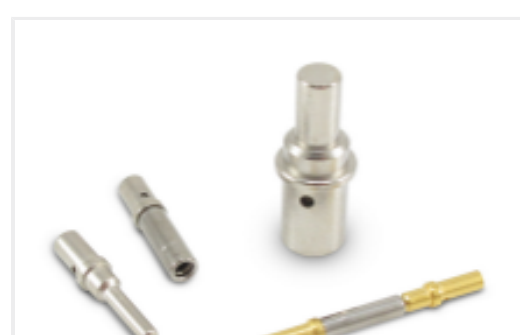
TE Part #DT04-2P
REC, 2P, GRY, N



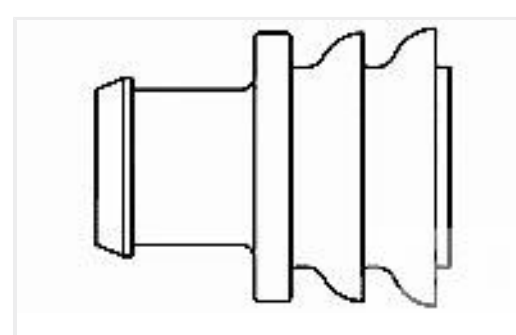
TE Part #DT06-2S
PLG, 2P, GRY, N



TE Part #CAT-D487-W416
Wedgelocks: DEUTSCH DT



TE Part #CAT-D48-ST273
DEUTSCH Solid Contacts



TE Part #281934-2
SINGLE WIRE SEAL

Documents

Product Drawings

[NEW GI CONN2.5 PLUG HSG 5P BLK](#)

English

CAD Files

[3D PDF](#)

[3D](#)



Customer View Model

[ENG_CVM_CVM_5-1971793-5_J.2d_dxf.zip](#)

English

Customer View Model

[ENG_CVM_CVM_5-1971793-5_J.3d_igs.zip](#)

English

Customer View Model

[ENG_CVM_CVM_5-1971793-5_J.3d_stp.zip](#)

English

By downloading the CAD file I accept and agree to the [Terms and Conditions](#) of use.

Product Specifications

[Product Specification](#)

English

Agency Approvals

[UL Report](#)

English