

5-1618388-4 ✓ ACTIVE

Kilovac | Kilovac LEV200

TE Internal #: 5-1618388-4

High Voltage Contactor, DC, 1 Form X SPST-NO-DM, 500 A

Contact Rating, 12 VDC Coil Voltage, Chassis Mount,

Environmentally Sealed, Kilovac LEV200

[View on TE.com >](#)



Relays & Contactors > Electromechanical Relays



Relay & Contactor Type: **High Voltage Contactor**

Current Type: **DC**

Contact Arrangement: **1 Form X SPST-NO-DM**

Contact Current Rating: **500 A**

Coil Voltage Rating: **12 VDC**

Features

Packaging Features

Packaging Method	Individual
------------------	------------

Dimensions

Coil Wire Length	390 mm[15.3 in]
Wire Size	22 AWG

Mechanical Attachment

Torque (Main)	80 – 100 in-lbs
Product Mount Type	Chassis Mount

Electrical Characteristics

Coil Resistance	11 Ω
Contact Switching Voltage (Max)	900 VDC
Contact Current Rating	500 A
Coil Voltage Rating	12 VDC

Configuration Features

Auxiliary Switch Contact Arrangement	None
Contact Number of Poles	1
Contact Arrangement	1 Form X SPST-NO-DM

Product Type Features



Relay & Contactor Type	High Voltage Contactor
------------------------	------------------------

Operation/Application

Current Type	DC
--------------	----

Body Features

Enclosure Type	Environmentally Sealed
----------------	------------------------

Termination Features

Main Termination & Connection Type	M8 x 1.25
------------------------------------	-----------

Coil Termination & Connection Type	Connector
------------------------------------	-----------

Other

EU RoHS Compliance	Compliant
--------------------	-----------

EU ELV Compliance	Compliant
-------------------	-----------

Product Compliance

[For compliance documentation, visit the product page on TE.com>](#)

EU RoHS Directive 2011/65/EU	Compliant
------------------------------	-----------

EU ELV Directive 2000/53/EC	Compliant
-----------------------------	-----------

China RoHS 2 Directive MIIT Order No 32, 2016	No Restricted Materials Above Threshold
---	---

EU REACH Regulation (EC) No. 1907/2006	Current ECHA Candidate List: JUNE 2024 (241) Candidate List Declared Against: JUNE 2024 (241) Does not contain REACH SVHC
--	---

Halogen Content	Low Halogen - Br, Cl, F, I < 900 ppm per homogenous material. Also BFR/CFR/PVC Free
-----------------	---

Solder Process Capability	Not applicable for solder process capability
---------------------------	--

Product Compliance Disclaimer

This information is provided based on reasonable inquiry of our suppliers and represents our current actual knowledge based on the information they provided. This information is subject to change. The part numbers that TE has identified as EU RoHS compliant have a maximum concentration of 0.1% by weight in homogenous materials for lead, hexavalent chromium, mercury, PBB, PBDE, DBP, BBP, DEHP, DIBP, and 0.01% for cadmium, or qualify for an exemption to these limits as defined in the Annexes of Directive 2011/65/EU (RoHS2). Finished electrical and electronic equipment products will be CE marked as required by Directive 2011/65/EU. Components may not be CE marked. Additionally, the part numbers that TE has identified as EU ELV compliant have a maximum concentration of 0.1% by weight in homogenous materials for lead, hexavalent chromium, and mercury, and 0.01% for cadmium, or qualify for an exemption to these limits as defined in the Annexes of Directive 2000/53/EC (ELV). Regarding the REACH Regulation, the information TE provides on SVHC in articles for this part number is based on the latest European Chemicals Agency (ECHA) 'Guidance on requirements for substances in articles' posted at this URL: <https://echa.europa.eu/guidance-documents/guidance-on-reach>



Compatible Parts

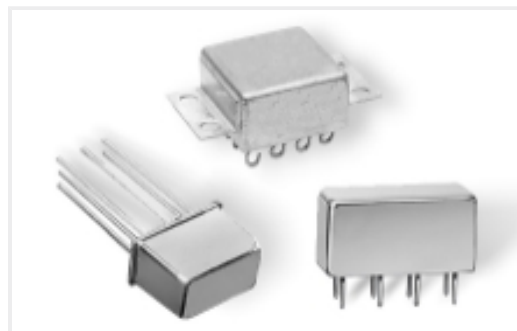


TE Part # 3-1618389-7
LEV100A4ANG=RELAY, 12Vdc SPST-NO

Also in the Series | Kilovac LEV200



DC Contactors(33)



DC Relays(33)



Electromechanical Relays(33)

Customers Also Bought



TE Part #0528-012-7005
BKSHL, 70P, BLK, PLG, RA, NO RIB, NW 26



TE Part #2378809-1
SDE F MCON 1.2 18-20 ASSY



TE Part #HPP816E031
TRICAN 12V HTD2800P1B11C6STD



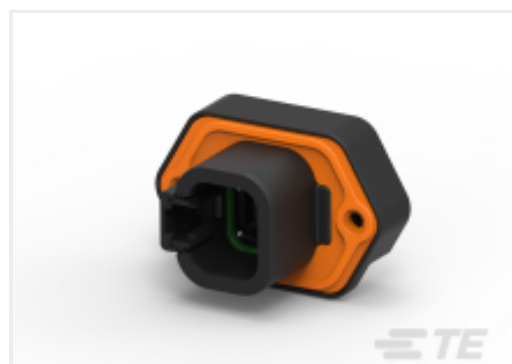
TE Part #K1142884
Battery Disconnecter 35-210-051-R-900



TE Part #2376591-2
250 FASTON PCB TAB TPBR



TE Part #4-1618391-0
LEV100A4ANH=RELAY,SPST-NO, 12VDC



TE Part #DTP15-4P
HDR, 4P, BLK, ST, SN/NI/CU



TE Part #927829-5
SPT REC 6.3 Contact SRC Ag



Documents

CAD Files

[3D PDF](#)

3D

Customer View Model

[ENG_CVM_CVM_5-1618388-4_E.2d_dxf.zip](#)

English

Customer View Model

[ENG_CVM_CVM_5-1618388-4_E.3d_igs.zip](#)

English

Customer View Model

[ENG_CVM_CVM_5-1618388-4_E.3d_stp.zip](#)

English

By downloading the CAD file I accept and agree to the [Terms and Conditions](#) of use.

Datasheets & Catalog Pages

[5-1773450-5_sec7_LEV200](#)

English