

5-1617806-4 ✓ ACTIVE

CII | CII FC-325

TE Internal #: 5-1617806-4

General Purpose Power Relay, DC, Non-Polarized, Monostable, 3 Form X 3PST-NO-DM, 25 A Contact Rating, 28 VDC Coil Voltage, Panel Mount, CII FC-325

[View on TE.com >](#)



Relays & Contactors > Electromechanical Relays



Relay & Contactor Type: **General Purpose Power Relay**

Current Type: **DC**

Coil Magnetic System: **Non-Polarized, Monostable**

Contact Arrangement: **3 Form X 3PST-NO-DM**

Contact Current Rating: **25 A**

Features

Contact Features

Contact Material	Silver Cadmium Oxide
Terminal Plating	Tin-Lead

Usage Conditions

Operating Temperature Range	-70 – 125 °C[-94 – 257 °F]
Environmental Ambient Temperature (Max)	125 °C[257 °F]

Mechanical Attachment

Product Mounting Feature Type	Mounting Studs
Product Mount Type	Panel Mount

Electrical Characteristics

Coil Resistance	160 Ω
Contact Current Rating	25 A
Coil Voltage Rating	28 VDC

Configuration Features

Coil Special Features	Coil Suppression Diode
Relay Options	Back EMF Suppression
Contact Arrangement	3 Form X 3PST-NO-DM

Operation/Application



Vibration Resistance	10G's, 5 – 1000Hz
Shock Resistance	50G's, 11ms
Current Type	DC
Coil Magnetic System	Non-Polarized, Monostable

Product Type Features

Relay & Contactor Type	General Purpose Power Relay
------------------------	-----------------------------

Body Features

Enclosure Type	Hermetically Sealed
----------------	---------------------

Termination Features

Main Termination & Connection Type	Solder Hook Terminals
Coil Termination & Connection Type	Solder Hook Terminals

Other

EU RoHS Compliance	Not Compliant
EU ELV Compliance	Not Compliant

Product Compliance

[For compliance documentation, visit the product page on TE.com>](#)

EU RoHS Directive 2011/65/EU	Not Compliant
EU ELV Directive 2000/53/EC	Not Compliant
China RoHS 2 Directive MIIT Order No 32, 2016	Restricted Materials Above Threshold
EU REACH Regulation (EC) No. 1907/2006	Current ECHA Candidate List: JUNE 2024 (241) Candidate List Declared Against: JAN 2024 (240) Does not contain REACH SVHC
Halogen Content	Low Halogen - Br, Cl, F, I < 900 ppm per homogenous material. Also BFR/CFR/PVC Free
Solder Process Capability	Not lead free process capable

Product Compliance Disclaimer

This information is provided based on reasonable inquiry of our suppliers and represents our current actual knowledge based on the information they provided. This information is subject to change. The part numbers that TE has identified as EU RoHS compliant have a maximum concentration of 0.1% by weight in homogenous materials for lead, hexavalent chromium, mercury, PBB, PBDE, DBP, BBP, DEHP, DIBP, and 0.01% for cadmium, or qualify for an exemption to these limits as defined in the Annexes of Directive 2011/65/EU (RoHS2). Finished electrical and electronic equipment products will be CE marked as required by Directive 2011/65/EU. Components may not be CE marked. Additionally, the part numbers that TE has identified as EU ELV compliant have a maximum concentration of 0.1% by weight in homogenous materials for lead, hexavalent chromium, and mercury, and 0.01% for cadmium, or qualify for an exemption to these limits

as defined in the Annexes of Directive 2000/53/EC (ELV). Regarding the REACH Regulations, TE's information on SVHC in articles for this part number is still based on the European Chemical Agency (ECHA) 'Guidance on requirements for substances in articles'(Version: 2, April 2011), applying the 0.1% weight on weight concentration threshold at the finished product level. TE is aware of the European Court of Justice ruling of September 10th, 2015 also known as O5A (Once An Article Always An Article) stating that, in case of 'complex object', the threshold for a SVHC must be applied to both the product as a whole and simultaneously to each of the articles forming part of its composition. TE has evaluated this ruling based on the new ECHA "Guidance on requirements for substances in articles" (June 2017, version 4.0) and will be updating its statements accordingly.

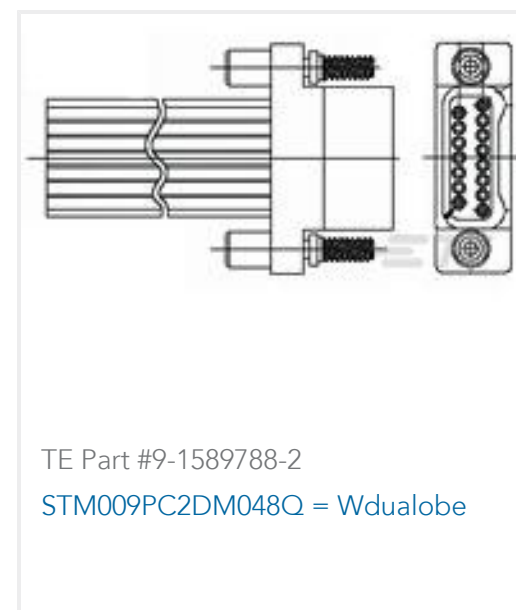
Compatible Parts



Also in the Series | CII FC-325



Customers Also Bought

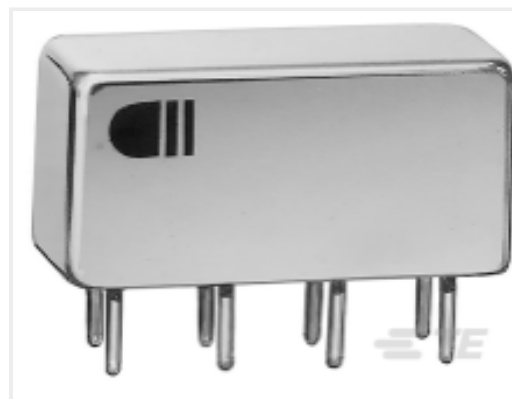




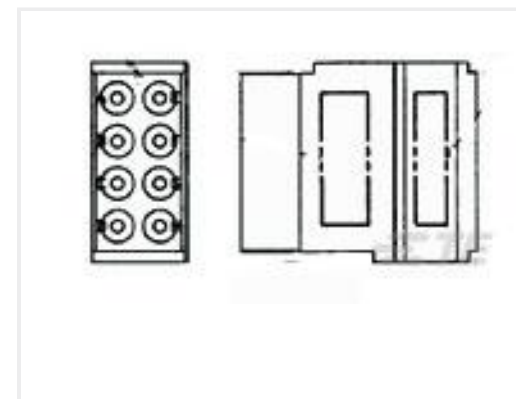
TE Part #YDTS20W25-43SCV001
RECP ASSY



TE Part #YDTS20F19-35JAV001
RECP ASSY



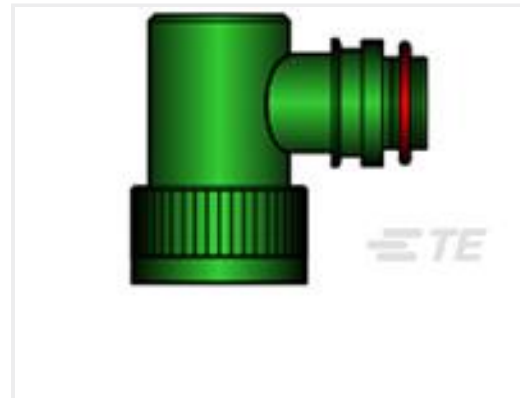
TE Part #3-1617515-0
3SBC1793A2=M39016/13-101M



TE Part #592624-3
TJ F/B 20D04



TE Part #65053-234
ELEC MODULE



TE Part #070539-000
TXR21AB90-1608AI

Documents

Product Drawings

[FC-325-CW4=RELAY, 3PST](#)

English

CAD Files

[3D PDF](#)

3D

Customer View Model

[ENG_CVM_CVM_5-1617806-4_A.2d_dxf.zip](#)

English

Customer View Model

[ENG_CVM_CVM_5-1617806-4_A.3d_igs.zip](#)

English

Customer View Model

[ENG_CVM_CVM_5-1617806-4_A.3d_stp.zip](#)

English

By downloading the CAD file I accept and agree to the [Terms and Conditions](#) of use.

Datasheets & Catalog Pages

[CII FC-325 Series Relay](#)

English