

41711 ✓ ACTIVE

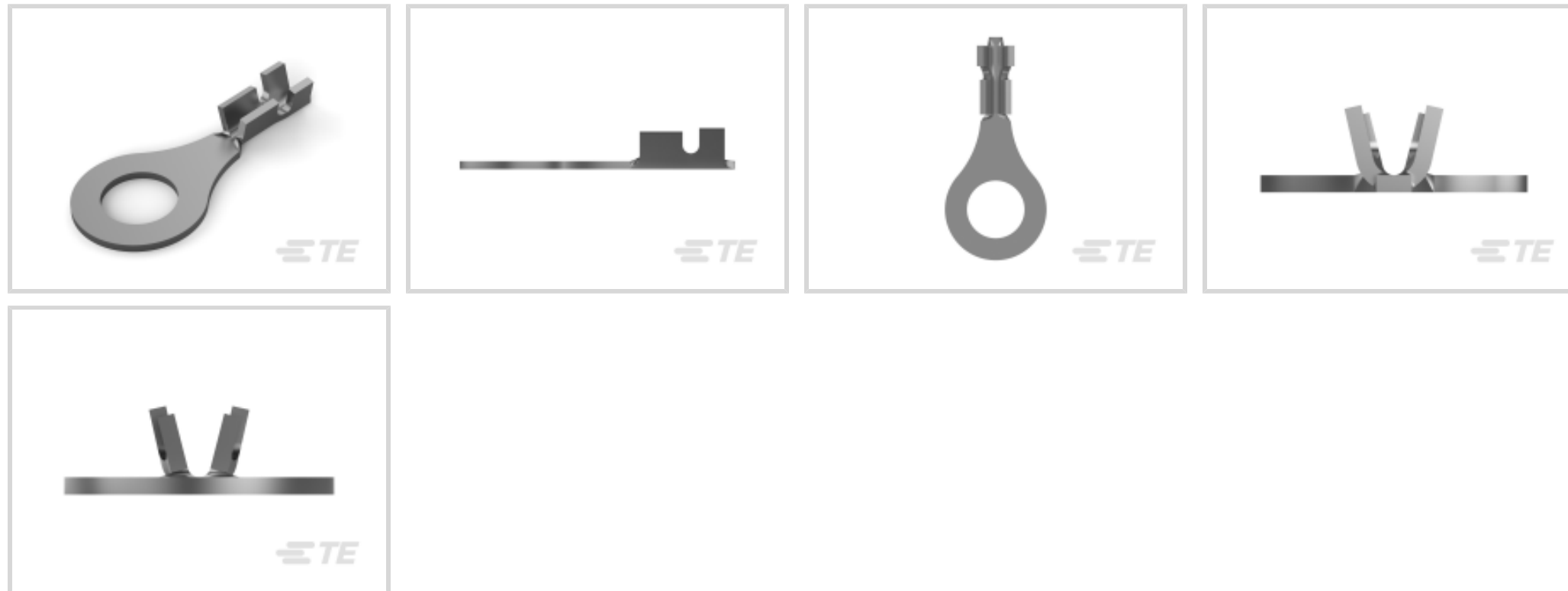
TE Internal #: 41711

Closed Ring Tongue Terminal, 22 – 18 AWG, M6 Stud, 6.73 mm [.265 in] Stud Diameter, Open Barrel, Straight, Tin Plating, Uninsulated

[View on TE.com >](#)



Terminals & Splices > Ring Terminals



Ring Terminal Product Type: Closed Ring Tongue Terminal

Wire Size: 642 – 1624 CMA

Stud Size: M6

## Features

### Configuration Features

Number of Holes	1
-----------------	---

### Body Features

Product Weight	.917 g
----------------	--------

### Mechanical Attachment

Wire Insulation Support	With
-------------------------	------

### Industry Standards

Government Qualified Terminal	No
-------------------------------	----

### Packaging Features

Packaging Quantity	6000
--------------------	------

Packaging Method	Strip/Reel
------------------	------------

### Contact Features

Contact Base Material	Brass
-----------------------	-------

Barrel Type	Open
-------------	------

Terminal Orientation	Straight
----------------------	----------

Terminal Plating Material	Tin
---------------------------	-----



Contact Underplating Material	Nickel
-------------------------------	--------

### Dimensions

	.07 in
Wire Size	642 – 1624 CMA
Stud Diameter	6.73 mm [.265 in]
Tongue Thickness	.76 mm [.03 in]
Product Length	24.89 mm [.98 in]
Barrel Inside Diameter	1.9 mm, 1.01 mm [.075 in] [.04 in]
Compatible Insulation Diameter (Max)	2.79 mm [.11 in]
Compatible Insulation Diameter Range	1.78 – 2.79 mm [.07 – .11 in]

### Product Type Features

Shape Description	Circular/Oval
Ring Terminal Product Type	Closed Ring Tongue Terminal
Stud Size	M6
Sealable	No
Compatible With Discrete Wire Type	Stranded
Wire Insulation Support Retention Type	Insulation Support

### Usage Conditions

Insulation Option	Uninsulated
Operating Temperature Range	-40 – 110 °C [-40 – 230 °F]

### Operation/Application

Compatible With Wire Base Material	Copper
------------------------------------	--------

### Other

EU RoHS Compliance	Compliant
EU ELV Compliance	Compliant

### Product Compliance

[For compliance documentation, visit the product page on TE.com>](#)

EU RoHS Directive 2011/65/EU	Compliant
EU ELV Directive 2000/53/EC	Compliant
China RoHS 2 Directive MIIT Order No 32, 2016	No Restricted Materials Above Threshold
EU REACH Regulation (EC) No. 1907/2006	Current ECHA Candidate List: JUNE 2024 (241)



Candidate List Declared Against: JUNE 2024 (241)  
Does not contain REACH SVHC

Halogen Content	Low Halogen - Br, Cl, F, I < 900 ppm per homogenous material. Also BFR/CFR/PVC Free
Solder Process Capability	Not applicable for solder process capability

Product Compliance Disclaimer

This information is provided based on reasonable inquiry of our suppliers and represents our current actual knowledge based on the information they provided. This information is subject to change. The part numbers that TE has identified as EU RoHS compliant have a maximum concentration of 0.1% by weight in homogenous materials for lead, hexavalent chromium, mercury, PBB, PBDE, DBP, BBP, DEHP, DIBP, and 0.01% for cadmium, or qualify for an exemption to these limits as defined in the Annexes of Directive 2011/65/EU (RoHS2). Finished electrical and electronic equipment products will be CE marked as required by Directive 2011/65/EU. Components may not be CE marked. Additionally, the part numbers that TE has identified as EU ELV compliant have a maximum concentration of 0.1% by weight in homogenous materials for lead, hexavalent chromium, and mercury, and 0.01% for cadmium, or qualify for an exemption to these limits as defined in the Annexes of Directive 2000/53/EC (ELV). Regarding the REACH Regulation, the information TE provides on SVHC in articles for this part number is based on the latest European Chemicals Agency (ECHA) 'Guidance on requirements for substances in articles' posted at this URL: <https://echa.europa.eu/guidance-documents/guidance-on-reach>

### Compatible Parts



TE Part # 2150282-2  
OCEAN\_2.0 Applicator-E-110F1400-REA



TE Part # 626235-2  
RING TONGUE 22-18 AWG 0.50 X 9.144 BR



TE Part # 160548-2  
RING TONGUE 22-20 AWG .0120 X .290 PTPBR

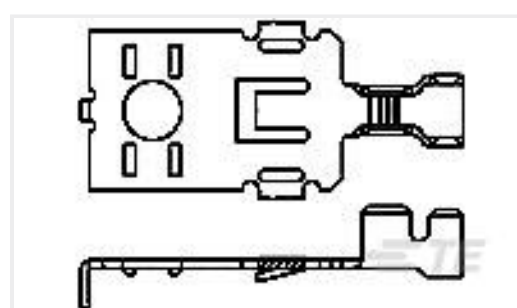


TE Part # 7-2150282-7  
OCEAN\_2.0 SPARE PART KIT-110F1400

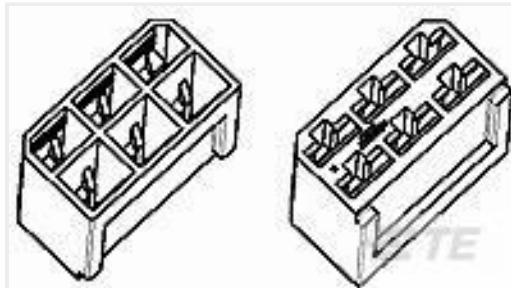


TE Part # 626235-1  
TERMINAL RING TONG

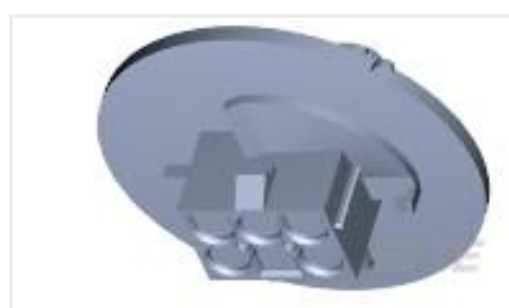
### Customers Also Bought



TE Part #63166-4  
POWER RING, TERMINAL 16-12 AWG  
BR



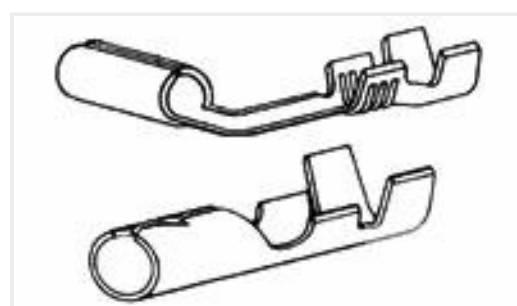
TE Part #1-480281-0  
FF 250 REC HSG 6P NYLON BLACK



TE Part #794714-1  
06P UMNL CAP HSG NATL, PAN MNT



TE Part #41124  
RING .190 (4.82 MM) 12-10 AWG TPBR



TE Part #42142-2  
SHUR PLUG TERMINAL 18-14 AWG BR



TE Part #1969870-1  
3P, 250 AND 187 SRS, POSI-LOCK  
MARK II



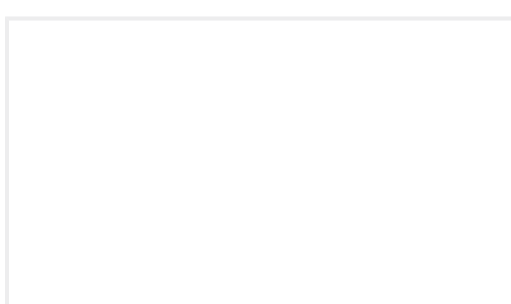
TE Part #2238156-1  
POS LOCK 250 Rec, MKII, 22-18 TPBR



TE Part #2-1971777-2  
PTL TPA HWI 1 X 2 NATURAL



TE Part #42899-2  
RING TONGUE 10-6 AWG TPBR



TE Part #CV08194001  
VERSAFLEX-FR-UL-1/4-09-SP

## Documents

### Product Drawings

[RING TERMINAL 22-18 AWG TPBR](#)

English

### CAD Files

[3D PDF](#)

3D

Customer View Model

[ENG\\_CVM\\_CVM\\_41711\\_AA\\_c-41711-aa.2d\\_dxf.zip](#)

English

Customer View Model

[ENG\\_CVM\\_CVM\\_41711\\_AA\\_c-41711-aa.3d\\_igs.zip](#)

English

Customer View Model

[ENG\\_CVM\\_CVM\\_41711\\_AA\\_c-41711-aa.3d\\_stp.zip](#)

English

By downloading the CAD file I accept and agree to the [Terms and Conditions](#) of use.

### Product Specifications

41711

Closed Ring Tongue Terminal, 22 – 18 AWG, M6 Stud, 6.73 mm [.265 in] Stud Diameter, Open Barrel, Straight, Tin Plating, Uninsulated



## Application Specification

English