



Switches > Push Button Switches



Configuration (Pole-Throw): **Double Pole - Double Throw**

Number of Actuators: **Single**

Actuator Profile: **Extended**

Bushing Style: **Threaded**

Bushing Thread Size: **1/4-40**

Features

Industry Standards

IP Rating	IP65
-----------	------

Packaging Features

Packaging Method	Bulk
------------------	------

Dimensions

Bushing Length	7.11 mm[.28 in]
Actuator Length	12.19 mm[.48 in]

Contact Features

Contact Base Material	Silver Clad Copper
Switch Contact Plating Material	Silver Clad with Gold Flash

Housing Features

Low Profile	No
Process Sealed	No

Product Type Features

Switch Connection Type	Wire Lugs
Illuminated	Without
Actuator Style	Cap Actuator - Order Separately

Body Features

Case Material	Thermoset
Actuator Material	Nickel-Plated Copper Alloy

Product Orientation	Vertical
Actuator Force	400 – 2000 g[14.11 – 70.54 oz]
Actuator Profile	Extended
Bushing Style	Threaded
Bushing Thread Size	1/4-40

Configuration Features

Configuration (Pole-Throw)	Double Pole - Double Throw
Number of Actuators	Single
Snap Action	Without
Support Bracket	Without
Switch Feedback Type	Non-Tactile
Operating Function	Push-On/Push-Off

Electrical Characteristics

Contact Current Rating	6 A
Operating Voltage Range	28 VDC

Other

EU RoHS Compliance	Compliant
EU ELV Compliance	Compliant with Exemptions

Product Compliance

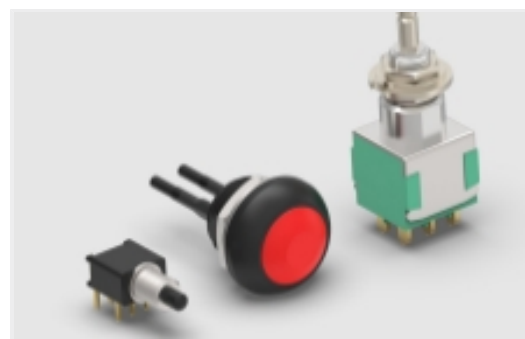
[For compliance documentation, visit the product page on TE.com>](#)

EU RoHS Directive 2011/65/EU	Compliant
EU ELV Directive 2000/53/EC	Compliant with Exemptions
China RoHS 2 Directive MIIT Order No 32, 2016	No Restricted Materials Above Threshold
EU REACH Regulation (EC) No. 1907/2006	Current ECHA Candidate List: JUNE 2024 (241) Candidate List Declared Against: JAN 2021 (211) SVHC > Threshold: Pb (3.7% in component) Article Safe Usage Statements: Do not eat, drink or smoke when using this product. Wash thoroughly after handling. Recycle if possible and dispose of the article by following all applicable governmental regulations relevant to your geographic location.
Halogen Content	Not Yet Reviewed for halogen content
Solder Process Capability	Wave solder capable to 240°C

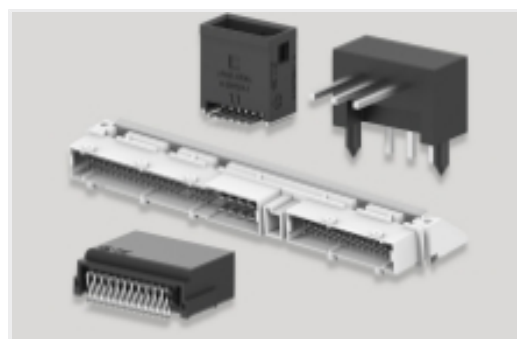
Product Compliance Disclaimer

This information is provided based on reasonable inquiry of our suppliers and represents our current actual knowledge based on the information they provided. This information is subject to change. The part numbers that TE has identified as EU RoHS compliant have a maximum concentration of 0.1% by weight in homogenous materials for lead, hexavalent chromium, mercury, PBB, PBDE, DBP, BBP, DEHP, DIBP, and 0.01% for cadmium, or qualify for an exemption to these limits as defined in the Annexes of Directive 2011/65/EU (RoHS2). Finished electrical and electronic equipment products will be CE marked as required by Directive 2011/65/EU. Components may not be CE marked. Additionally, the part numbers that TE has identified as EU ELV compliant have a maximum concentration of 0.1% by weight in homogenous materials for lead, hexavalent chromium, and mercury, and 0.01% for cadmium, or qualify for an exemption to these limits as defined in the Annexes of Directive 2000/53/EC (ELV). Regarding the REACH Regulation, the information TE provides on SVHC in articles for this part number is based on the latest European Chemicals Agency (ECHA) 'Guidance on requirements for substances in articles' posted at this URL: <https://echa.europa.eu/guidance-documents/guidance-on-reach>

Also in the Series | **Alcoswitch MPE**



General Purpose Push Button Switches (4)



PCB Headers & Receptacles(1)



Push Button Switches(4)



Wire-to-Board Headers & Receptacles (1)

Customers Also Bought



TE Part #0460-215-16141
PIN, SOLID, SIZE 16, 14AWG, NI



TE Part #0660-206-0882
CONT PIN



TE Part #W2S-P012
WEDGE LOCK, 2P, PLG, GRN, SL RET, DT



TE Part #4-1437567-3
MPE106F=SWITCH PUSH BUTTON WAT



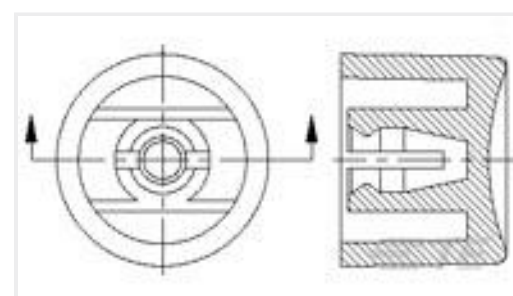
TE Part #DT04-2P-E003
REC, 2P, GRY, N, CAP



TE Part #CAT-J41-DDPC
DEUTSCH DT Plug Connectors



TE Part #YDTS32W19NV0010000
DUST COVER ASSEM



TE Part #1825068-1
C22004 CAP BLACK



Documents

Product Drawings

[MPE206N=\(MSPE\) SW P/B WATERPRO](#)

English

CAD Files

[3D PDF](#)

3D

Customer View Model

[ENG_CVM_CVM_4-1437567-4_B.2d_dxf.zip](#)

English

Customer View Model

[ENG_CVM_CVM_4-1437567-4_B.3d_igs.zip](#)

English

Customer View Model

[ENG_CVM_CVM_4-1437567-4_B.3d_stp.zip](#)

English

By downloading the CAD file I accept and agree to the [Terms and Conditions](#) of use.

Datasheets & Catalog Pages

[2-1773458-6_GREEN_SERIES_SWITCHES](#)

English