

3-1618389-7 ✓ ACTIVE

Kilovac | Kilovac LEV100

TE Internal #: 3-1618389-7

High Voltage Contactor, DC, 1 Form X SPST-NO-DM, 100 A

Contact Rating, 12 VDC Coil Voltage, Chassis Mount,

Environmentally Sealed, Kilovac LEV100

[View on TE.com >](#)



Relays & Contactors > Electromechanical Relays



Relay & Contactor Type: **High Voltage Contactor**

Current Type: **DC**

Contact Arrangement: **1 Form X SPST-NO-DM**

Contact Current Rating: **100 A**

Coil Voltage Rating: **12 VDC**

## Features

### Packaging Features

Packaging Method	Individual
------------------	------------

### Dimensions

Coil Wire Length	381 mm[15 in]
Wire Size	22 AWG

### Mechanical Attachment

Torque (Main)	30 – 40 in-lbs
Product Mount Type	Chassis Mount

### Electrical Characteristics

Coil Resistance	26 $\Omega$
Contact Switching Voltage (Max)	900 VDC
Contact Current Rating	100 A
Coil Voltage Rating	12 VDC

### Configuration Features

Auxiliary Switch Contact Arrangement	None
Contact Number of Poles	1
Contact Arrangement	1 Form X SPST-NO-DM

### Product Type Features

Relay & Contactor Type	High Voltage Contactor
------------------------	------------------------



**Operation/Application**

Current Type	DC
--------------	----

**Body Features**

Enclosure Type	Environmentally Sealed
----------------	------------------------

**Termination Features**

Main Termination & Connection Type	M5 Female
Coil Termination & Connection Type	Connector

**Other**

EU RoHS Compliance	Compliant with Exemptions
EU ELV Compliance	Compliant with Exemptions

**Product Compliance**

[For compliance documentation, visit the product page on TE.com>](#)

EU RoHS Directive 2011/65/EU	Compliant with Exemptions
EU ELV Directive 2000/53/EC	Compliant with Exemptions
China RoHS 2 Directive MIIT Order No 32, 2016	Restricted Materials Above Threshold
EU REACH Regulation (EC) No. 1907/2006	Current ECHA Candidate List: JUNE 2024 (241) Candidate List Declared Against: JUNE 2024 (241) SVHC > Threshold: Pb (36% in Component Part) <b>Article Safe Usage Statements:</b> Do not eat, drink or smoke when using this product. Wash thoroughly after handling. Recycle if possible and dispose of the article by following all applicable governmental regulations relevant to your geographic location.
Halogen Content	Low Halogen - Br, Cl, F, I < 900 ppm per homogenous material. Also BFR/CFR/PVC Free
Solder Process Capability	Not applicable for solder process capability

Product Compliance Disclaimer

This information is provided based on reasonable inquiry of our suppliers and represents our current actual knowledge based on the information they provided. This information is subject to change. The part numbers that TE has identified as EU RoHS compliant have a maximum concentration of 0.1% by weight in homogenous materials for lead, hexavalent chromium, mercury, PBB, PBDE, DBP, BBP, DEHP, DIBP, and 0.01% for cadmium, or qualify for an exemption to these limits as defined in the Annexes of Directive 2011/65/EU (RoHS2). Finished electrical and electronic equipment products will be CE marked as required by Directive 2011/65/EU. Components may not be CE marked. Additionally, the part numbers that TE has identified as EU ELV compliant have a maximum concentration of 0.1% by weight in homogenous materials for lead, hexavalent chromium, and mercury, and 0.01% for cadmium, or qualify for an exemption to these limits as defined in the Annexes of Directive 2000/53/EC (ELV). Regarding the REACH Regulation, the information TE provides



on SVHC in articles for this part number is based on the latest European Chemicals Agency (ECHA) 'Guidance on requirements for substances in articles' posted at this URL: <https://echa.europa.eu/guidance-documents/guidance-on-reach>

## Compatible Parts



TE Part # 6-1618390-8  
LEV200H4ANA, RELAY SPST-NO



TE Part # 5-1618398-0  
EV100AAANA=CONTACTOR, SPST-NO 9-36Vdc



TE Part # 9-1618406-9  
EV202AVAND=RELAY, DPST-NO 12Vdc



TE Part # 5-1618388-4  
LEV200A4ANF=RELAY, SPST-NO



TE Part # 3-1618411-6  
KHR500KVANL = CONTACTOR, SPST-NO, 12V



TE Part # CAT-DC-K1K-CONT  
SPST: Kilovac K1K DC Contactors; Bi-directional Switching



TE Part # 3-1618411-7  
KHR500AVANL = CONTACTOR, SPST, NO 12V

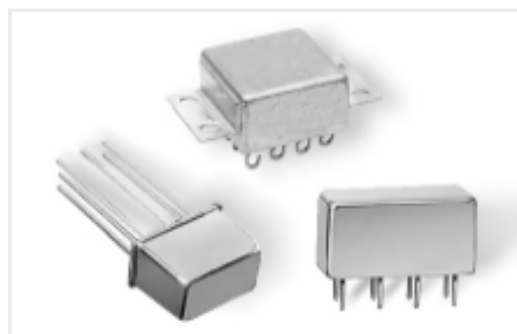


TE Part # 5-1618404-0  
KHR500KSANL=Contactor, SPST-NO

## Also in the Series | Kilovac LEV100



DC Contactors(11)

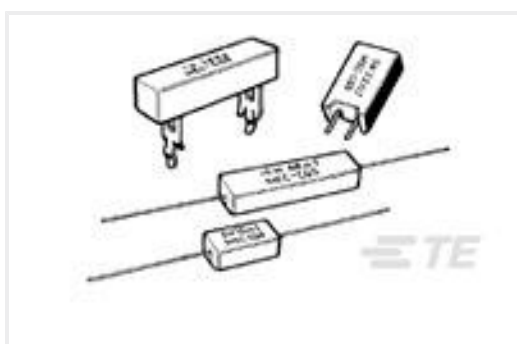


DC Relays(11)



Electromechanical Relays(13)

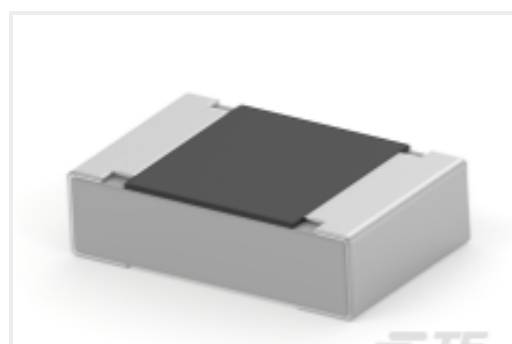
## Customers Also Bought



TE Part #2-1623789-3  
SQM7 R47 5% (WIRE)



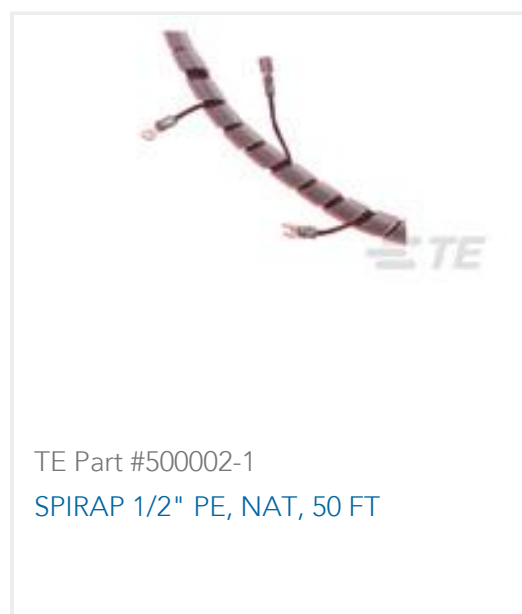
TE Part #1-2213767-9  
AV19 SPM 3A MOVE RING LED BLUE 24V



TE Part #2176342-3  
CRGCO 0805 2R2 5%



TE Part #1-2213764-5  
AV19 SPM 3A FIX RING LED GREEN 24V



## Documents

### CAD Files

#### 3D PDF

3D

#### Customer View Model

[ENG\\_CVM\\_CVM\\_3-1618389-7\\_E.2d\\_dxf.zip](#)

English

#### Customer View Model

[ENG\\_CVM\\_CVM\\_3-1618389-7\\_E.3d\\_igs.zip](#)

English

#### Customer View Model

[ENG\\_CVM\\_CVM\\_3-1618389-7\\_E.3d\\_stp.zip](#)

English

By downloading the CAD file I accept and agree to the [Terms and Conditions](#) of use.

### Datasheets & Catalog Pages

[5-1773450-5\\_sec7\\_LEV100](#)

English

[Kilovac LEV100 Series 900 Vdc Contactor](#)

English