



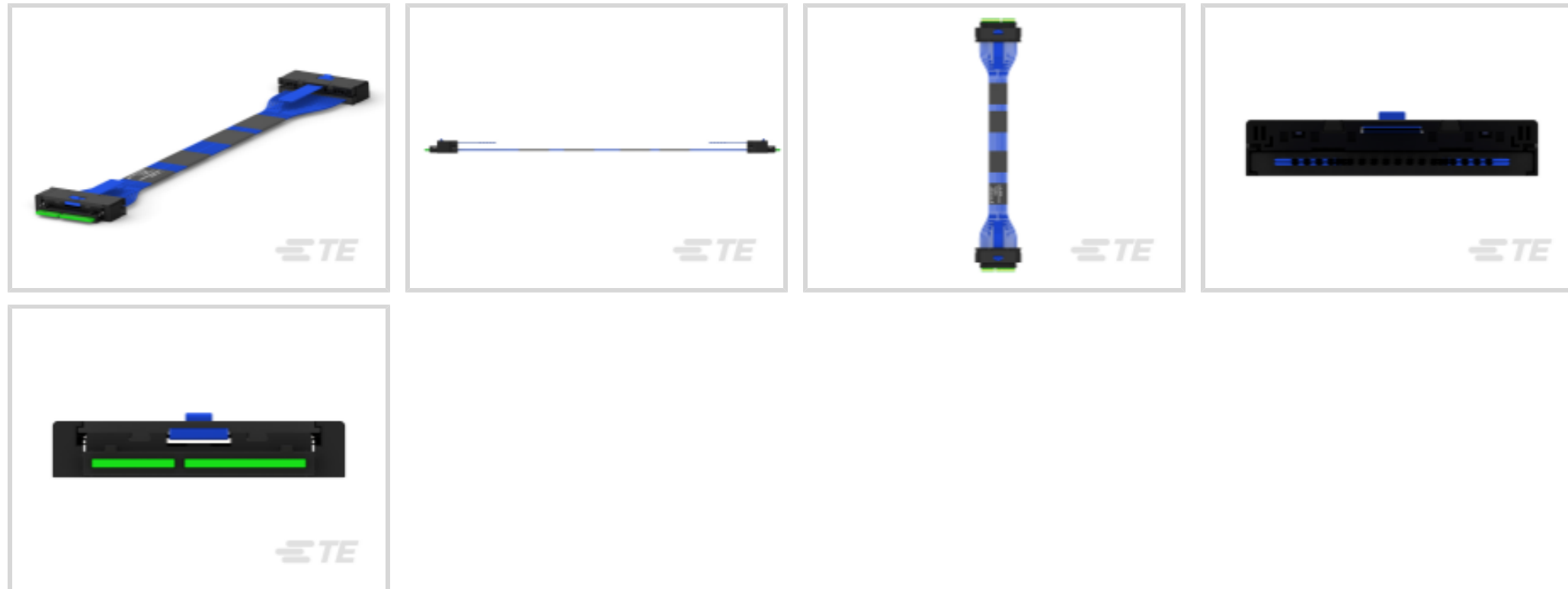
Sliver for SFF-TA-1002

TE Internal #: 2324305-1

Sliver Cable Assembly, 124 Position, .5 m, 16 Gb/s, 33 AWG, Sliver Plug End A, Sliver Plug End B, High Speed, 124 Signal Positions, CL2

[View on TE.com >](#)

Cable Assemblies > Copper Cable Assemblies > Internal I/O Cable Assemblies



Cable Assembly Type: **Sliver**

Number of Positions: **124**

Cable Assembly Length: **.5 m**

Data Rate: **16 Gb/s**

Cable Style: **Discrete Pair**

Features

Electrical Characteristics

Impedance	85 Ω
-----------	------

Other

Cable Assembly Configuration	Double Ended
Cable Assembly Length	.5 m
EU RoHS Compliance	Compliant
EU ELV Compliance	Compliant

Product Type Features

Cable Assembly Type	Sliver
Cable Style	Discrete Pair
Cable Assembly (End A)	Sliver Plug
Cable Assembly (End B)	Sliver Plug
Cable Assembly Category	High Speed

Configuration Features

Number of Positions	124
---------------------	-----



Number of Signal Positions	124
----------------------------	-----

Signal Characteristics

Data Rate	16 Gb/s
-----------	---------

Dimensions

Wire Size	33 AWG
-----------	--------

Body Features

Cable Flammability Rating	CL2
---------------------------	-----

Operation/Application

Halogen Free	No
--------------	----

Product Compliance

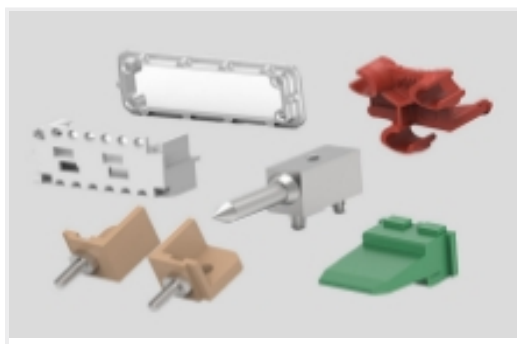
[For compliance documentation, visit the product page on TE.com>](#)

EU RoHS Directive 2011/65/EU	Compliant
EU ELV Directive 2000/53/EC	Compliant
China RoHS 2 Directive MIIT Order No 32, 2016	No Restricted Materials Above Threshold
EU REACH Regulation (EC) No. 1907/2006	Current ECHA Candidate List: JUNE 2024 (241) Candidate List Declared Against: JUNE 2024 (241) Does not contain REACH SVHC
Halogen Content	Not Low Halogen - contains Br or Cl > 900 ppm.
Solder Process Capability	Not reviewed for solder process capability

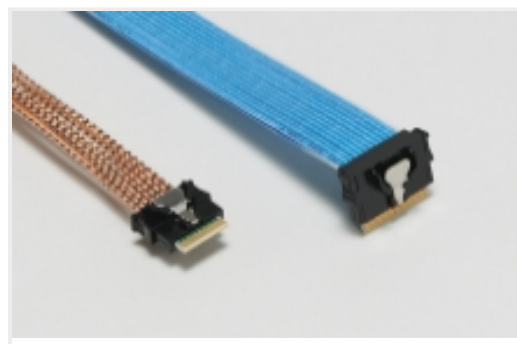
Product Compliance Disclaimer

This information is provided based on reasonable inquiry of our suppliers and represents our current actual knowledge based on the information they provided. This information is subject to change. The part numbers that TE has identified as EU RoHS compliant have a maximum concentration of 0.1% by weight in homogenous materials for lead, hexavalent chromium, mercury, PBB, PBDE, DBP, BBP, DEHP, DIBP, and 0.01% for cadmium, or qualify for an exemption to these limits as defined in the Annexes of Directive 2011/65/EU (RoHS2). Finished electrical and electronic equipment products will be CE marked as required by Directive 2011/65/EU. Components may not be CE marked. Additionally, the part numbers that TE has identified as EU ELV compliant have a maximum concentration of 0.1% by weight in homogenous materials for lead, hexavalent chromium, and mercury, and 0.01% for cadmium, or qualify for an exemption to these limits as defined in the Annexes of Directive 2000/53/EC (ELV). Regarding the REACH Regulation, the information TE provides on SVHC in articles for this part number is based on the latest European Chemicals Agency (ECHA) 'Guidance on requirements for substances in articles' posted at this URL: <https://echa.europa.eu/guidance-documents/guidance-on-reach>

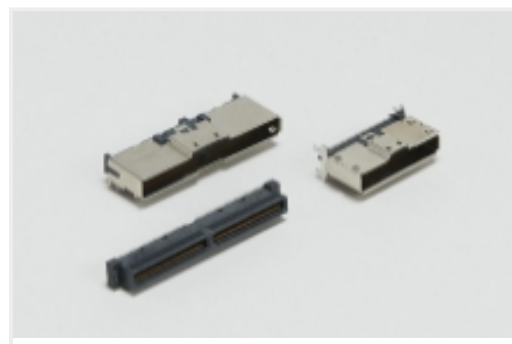
Also in the Series | [Sliver for SFF-TA-1002](#)



Connector Hardware(1)



Internal I/O Cable Assemblies(105)



Internal I/O Connectors(133)

Customers Also Bought



TE Part #2821385-1
SLIVER C/A, 74P, R/A TO R/A, 10GHZ,
85OHM



TE Part #2339107-1
124PIN SLIVER PLUG KIT.



TE Part #2317823-1
CABLE PLUG KIT, SLIVER 74P

Documents

Product Drawings

[C/A, SLIVER 124P, STR TO STR](#)

English

CAD Files

[3D PDF](#)

3D

Customer View Model

[ENG_CVM_CVM_2339107-1_A.2d_dxf.zip](#)

English

Customer View Model

[ENG_CVM_CVM_2339107-1_A.3d_igs.zip](#)

English

Customer View Model

[ENG_CVM_CVM_2339107-1_A.3d_stp.zip](#)

English

By downloading the CAD file I accept and agree to the [Terms and Conditions](#) of use.

Datasheets & Catalog Pages

[Sliver Internal Cabled Interconnect Solutions Brochure \(Chinese\)](#)

Product Specifications

[Product Specification](#)

English