

2320932-4 ✓ ACTIVE

AMP | AMPSEAL 16

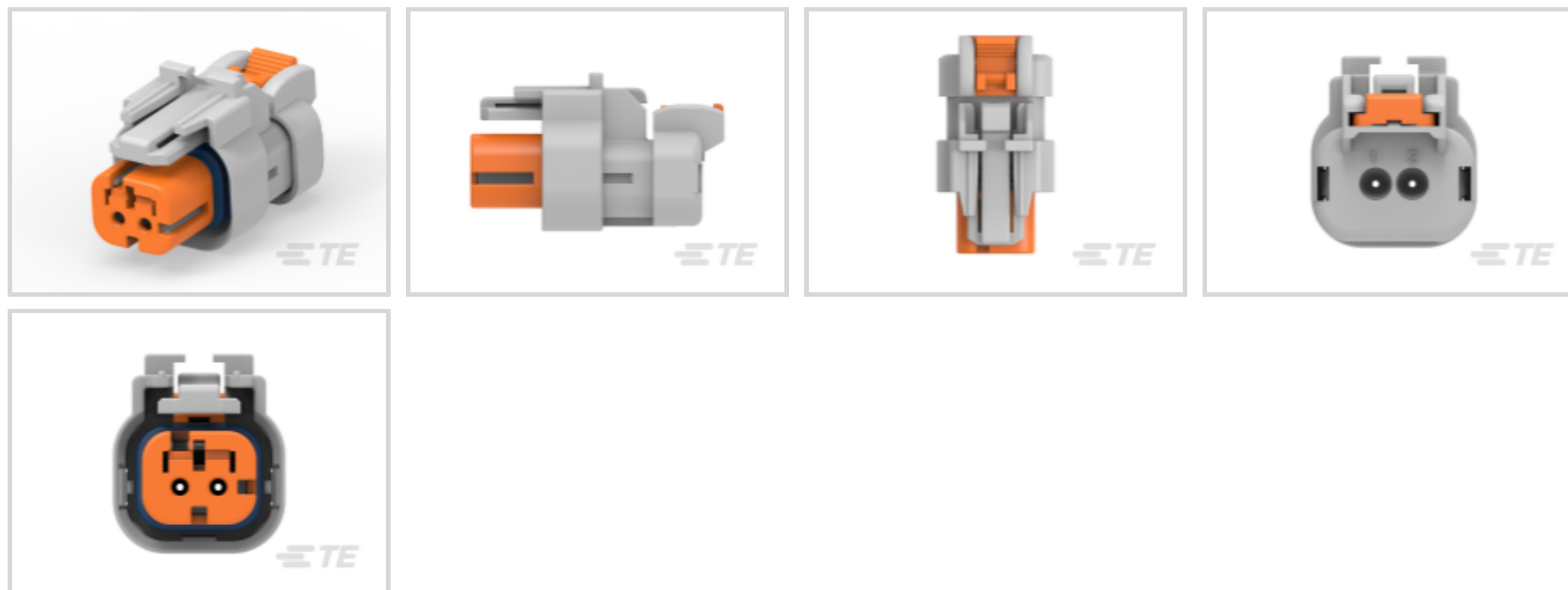
TE Internal #: 2320932-4

2 Position Housing, Housing for Female Terminals, Wire-to-Wire,
4.5 mm [.177 in] Centerline, Sealable, Gray, Wire & Cable,
AMPSEAL 16

[View on TE.com >](#)



Connectors > Automotive Connectors > Automotive Housings > AMPSEAL 16 Housings



Number of Positions: 2

Connector & Housing Type: **Housing for Female Terminals**

Mating Pin Diameter: 1.6 mm [.062 in]

Connector System: **Wire-to-Wire**

Centerline (Pitch): 4.5 mm [.177 in]

[All AMPSEAL 16 Housings \(224\)](#)

Features

Electrical Characteristics

| | |
|-------------------|---------|
| Operating Voltage | 250 VDC |
|-------------------|---------|

Industry Standards

| | |
|------------------------|----------|
| IP Rating | IP67 |
| UL Flammability Rating | UL 94V-0 |

Dimensions

| | |
|------------------|--------------------|
| Product Width | 20.33 mm[.8 in] |
| Product Length | 36.75 mm[1.447 in] |
| Connector Height | 23.5 mm[.925 in] |

Packaging Features

| | |
|------------------|------|
| Packaging Method | Tube |
|------------------|------|

Mechanical Attachment

| | |
|---------------|------------------|
| Strain Relief | Add By Accessory |
|---------------|------------------|



| | |
|-----------------------------|----------------------------|
| Terminal Position Assurance | Yes |
| Mating Alignment Type | Keyed |
| Mating Alignment | With |
| Connector Mounting Type | Cable Mount (Free-Hanging) |

Other

| | |
|--------------------------------------|-----------|
| Serviceable | Yes |
| Connector Position Assurance Capable | Yes |
| EU RoHS Compliance | Compliant |
| EU ELV Compliance | Compliant |

Body Features

| | |
|-------------------------|------|
| Cable Exit Angle | 180° |
| Primary Product Color | Gray |
| Connector & Keying Code | D |

Housing Features

| | |
|--------------------|------------------|
| Housing Material | PBT GF |
| Centerline (Pitch) | 4.5 mm [.177 in] |

Contact Features

| | |
|---------------------|------------------|
| Contact Size | 1.6mm |
| Contact Type | Socket |
| Mating Pin Diameter | 1.6 mm [.062 in] |

Product Type Features

| | |
|-----------------------------------|------------------------------|
| Mixed & Hybrid Connector | No |
| Connector Shape | Rectangular |
| Connector & Housing Type | Housing for Female Terminals |
| Connector System | Wire-to-Wire |
| Sealable | Yes |
| Primary Locking Feature | Integrated in Housing |
| Connector & Contact Terminates To | Wire & Cable |

Configuration Features

| | |
|-----------------------|---|
| Blank Cavity Position | 0 |
| Number of Positions | 2 |
| Number of Rows | 1 |



Usage Conditions

| | |
|-----------------------------|----------------------------|
| Operating Temperature (Max) | 150 °C[302 °F] |
| Operating Temperature Range | -40 – 150 °C[-40 – 302 °F] |

Product Compliance

[For compliance documentation, visit the product page on TE.com>](#)

| | |
|-----------------------------------------------|---------------------------------------------------------------------------------------------------------------------------------------------------------------------------------------------------------------------------------------------------------------------------------------------------------------------------------------------------------------------------------------------------------------------------------------------------------------------------------------------------------------------------------------------------------------------------------------------------------------------------------------------------------------------------------------|
| EU RoHS Directive 2011/65/EU | Compliant |
| EU ELV Directive 2000/53/EC | Compliant |
| China RoHS 2 Directive MIIT Order No 32, 2016 | No Restricted Materials Above Threshold |
| EU REACH Regulation (EC) No. 1907/2006 | <p>Current ECHA Candidate List: JUNE 2024 (241) Candidate List Declared Against: JUNE 2024 (241) SVHC > Threshold: Octamethylcyclotetrasiloxane (D4) (.5% in Component Part) Dodecamethylcyclohexasiloxane (D6) (.5% in Component Part) Decamethylcyclopentasiloxane (D5) (.5% in Component Part)</p> <p>Article Safe Usage Statements: Wash thoroughly after handling. Recycle if possible and dispose of the article by following all applicable governmental regulations relevant to your geographic location.</p> |
| Halogen Content | Not Low Halogen - contains Br or Cl > 900 ppm. |
| Solder Process Capability | Not reviewed for solder process capability |

Product Compliance Disclaimer

This information is provided based on reasonable inquiry of our suppliers and represents our current actual knowledge based on the information they provided. This information is subject to change. The part numbers that TE has identified as EU RoHS compliant have a maximum concentration of 0.1% by weight in homogenous materials for lead, hexavalent chromium, mercury, PBB, PBDE, DBP, BBP, DEHP, DIBP, and 0.01% for cadmium, or qualify for an exemption to these limits as defined in the Annexes of Directive 2011/65/EU (RoHS2). Finished electrical and electronic equipment products will be CE marked as required by Directive 2011/65/EU. Components may not be CE marked. Additionally, the part numbers that TE has identified as EU ELV compliant have a maximum concentration of 0.1% by weight in homogenous materials for lead, hexavalent chromium, and mercury, and 0.01% for cadmium, or qualify for an exemption to these limits as defined in the Annexes of Directive 2000/53/EC (ELV). Regarding the REACH Regulation, the information TE provides on SVHC in articles for this part number is based on the latest European Chemicals Agency (ECHA) 'Guidance on requirements for substances in articles' posted at this URL: <https://echa.europa.eu/guidance-documents/guidance-on-reach>

Compatible Parts



TE Part # 2320920-4
AS16, PLUG ASSY, HT, 02P, N SEAL,
CODE D



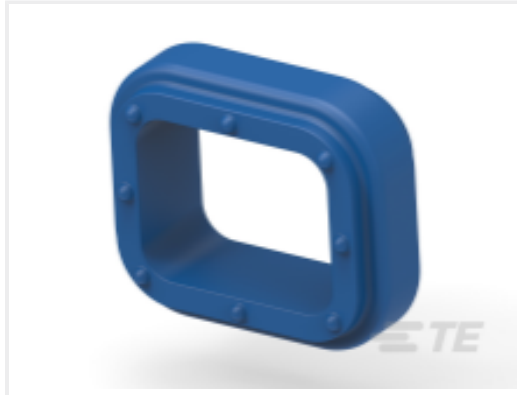
TE Part # CAT-AM7801-T618
Removal Tools — AMPSEAL 16



TE Part # 2320926-4
AS16, CAP ASSY, HT, 02P, E SEAL, CODE
D



TE Part # CAT-AM7801-T273
AMPSEAL 16 CONTACTS



TE Part # 2272179-1
AMPSEAL 16 PERIPHERAL SEAL 2P -
SERVICE

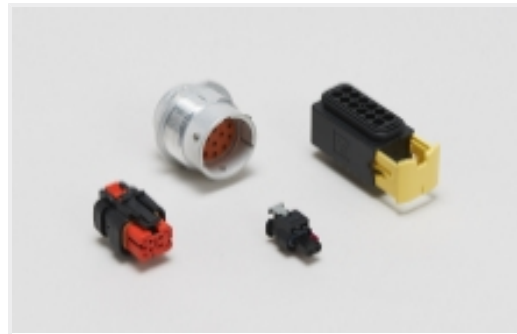


TE Part # 776363-1
SEALING PLUG, SZ 16 CAVITY

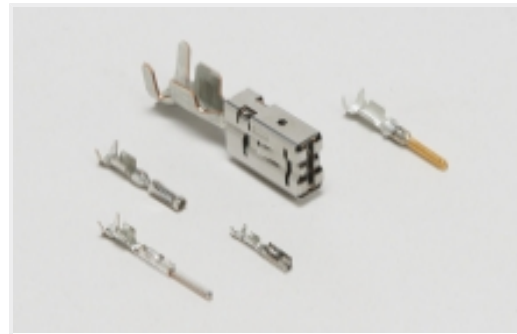
Also in the Series | AMPSEAL 16



Automotive Connector Caps & Covers
(5)



Automotive Housings (239)



Automotive Terminals (35)



Data Connectivity Housings (3)



Rectangular Backshells & Clamps (74)

Customers Also Bought



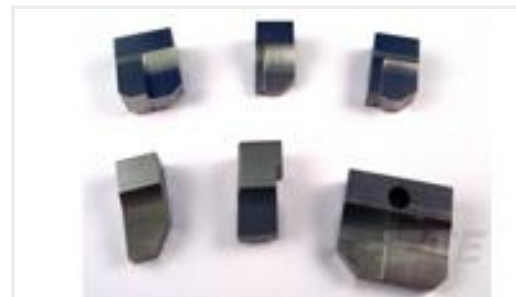
TE Part # 2-330648-1
PIDG 22-16 22-18 MIL R 4; TAPE



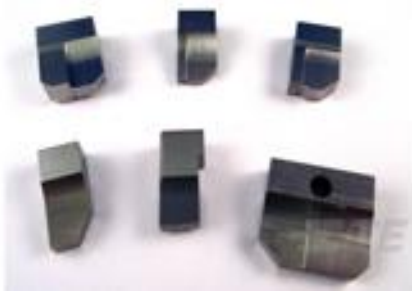
TE Part # YHV280-2PM-P-4MM-B
HVA280-2p, pass, 4sqmm, Key B



TE Part # 1-1633961-2
CRIMPER, INSULATION F PREMIUM



TE Part # 4-1633932-0
ANVIL, COMBINATION



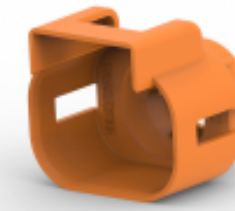
TE Part #464291-5
ANVIL, SAND-BLASTED 12-10



TE Part #788189-2
CPC 17-3 RCPT ASY,REV SEX



TE Part #2208669-3
8MM HV, CONTACT,ASSY



TE Part #2103013-3
CABLE SEAL RETAINER, SIZE 2, OR,
HVA280



TE Part #2177090-3
STEEL, OUTER FERRULE, 8MM HV,
25SQMM



TE Part #1587940-3
CABLE SEAL RETAINER, SIZE C

Documents

Product Drawings

[AS16, PLUG ASSY, HT, 02P, E SEAL, CODE D](#)

English

CAD Files

[3D PDF](#)

3D

Customer View Model

[ENG_CVM_CVM_2320932-4_A.2d_dxf.zip](#)

English

Customer View Model

[ENG_CVM_CVM_2320932-4_A.3d_igs.zip](#)

English

Customer View Model

[ENG_CVM_CVM_2320932-4_A.3d_stp.zip](#)

English

By downloading the CAD file I accept and agree to the [Terms and Conditions](#) of use.

Product Specifications

[Application Specification](#)

English

Agency Approvals

[UL Report](#)

English