



HPF 1.2mm

TE Internal #: 2208362-3

Receptacle Terminal, Silver (Ag), 1.2 mm [.047 in] Tab Width, .6 mm [.024 in] Tab Thickness, 20 AWG, .5 mm² Wire, Sealable, HPF 1.2mm

[View on TE.com >](#)

Terminals & Splices > Automotive Terminals > HPF 1.2, RECEPTACLE



Terminal Type: **Receptacle**

Interface Plating: **Silver (Ag)**

Mating Tab Width: **1.2 mm [.047 in]**

Mating Tab Thickness: **.6 mm [.024 in]**

Terminal Transmits: **0 – 24 A (Low Power)**

[All HPF 1.2, RECEPTACLE \(3\)](#)

Features

Operation/Application

Compatible With Wire Base Material	Copper
Conforms to Automation Guideline	Yes, DIN 72036 Automation of Wiring Harness Production per Version June 2024

Packaging Features

Packaging Method	Reel
Packaging Quantity	5000

Usage Conditions

Insulation Option	Uninsulated
Operating Temperature (Max)	125 °C[212 °F]
Operating Temperature Range	-40 – 150 °C[-40 – 302 °F]

Termination Features

Termination Method to Wire & Cable	Crimp
Product Terminates To	Wire



Contact Features

Crimp Type	F-Crimp
Contact Size	1.2mm
Contact Fabrication	Stamped & Formed
Terminal Type	Receptacle
Interface Plating	Silver (Ag)
Mating Tab Width	1.2 mm [.047 in]
Mating Tab Thickness	.6 mm [.024 in]

Product Type Features

Sealable	Yes
Primary Locking Feature	Locking Lance

Body Features

Terminal Seal Type	Single Wire Seal (SWS)
--------------------	------------------------

Dimensions

Wire Size	.5 mm ²
Wire Size Search	.5 mm ²

Other

Terminal Transmits	0 – 24 A (Low Power)
EU RoHS Compliance	Compliant
EU ELV Compliance	Compliant

Product Compliance

[For compliance documentation, visit the product page on TE.com>](#)

EU RoHS Directive 2011/65/EU	Compliant
EU ELV Directive 2000/53/EC	Compliant
China RoHS 2 Directive MIIT Order No 32, 2016	No Restricted Materials Above Threshold
EU REACH Regulation (EC) No. 1907/2006	Current ECHA Candidate List: JUNE 2024 (241) Candidate List Declared Against: JUNE 2024 (241) Does not contain REACH SVHC
Halogen Content	Low Halogen - Br, Cl, F, I < 900 ppm per homogenous material. Also BFR/CFR/PVC Free
Solder Process Capability	Not reviewed for solder process capability

Product Compliance Disclaimer

This information is provided based on reasonable inquiry of our suppliers and represents our current actual knowledge based on the information they provided. This information is subject to change. The part numbers that TE has identified as EU RoHS compliant have a maximum concentration of 0.1% by weight in homogenous materials for lead, hexavalent chromium, mercury, PBB, PBDE, DBP, BBP, DEHP, DIBP, and 0.01% for cadmium, or qualify for an exemption to these limits as defined in the Annexes of Directive 2011/65/EU (RoHS2). Finished electrical and electronic equipment products will be CE marked as required by Directive 2011/65/EU. Components may not be CE marked. Additionally, the part numbers that TE has identified as EU ELV compliant have a maximum concentration of 0.1% by weight in homogenous materials for lead, hexavalent chromium, and mercury, and 0.01% for cadmium, or qualify for an exemption to these limits as defined in the Annexes of Directive 2000/53/EC (ELV). Regarding the REACH Regulation, the information TE provides on SVHC in articles for this part number is based on the latest European Chemicals Agency (ECHA) 'Guidance on requirements for substances in articles' posted at this URL: <https://echa.europa.eu/guidance-documents/guidance-on-reach>

Compatible Parts



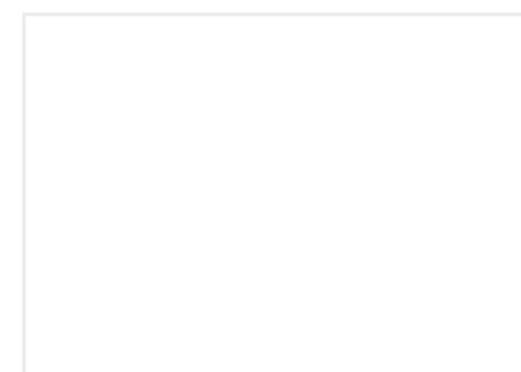
TE Part # 2151519-2
OCEAN_2.0 APPLICATOR-S-
062F1300-RSA



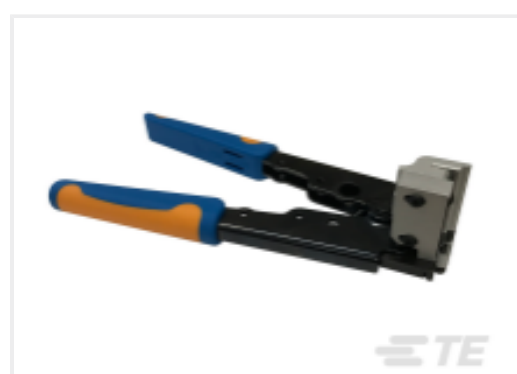
TE Part # 7-2151519-7
OCEAN_2.0 SPARE PART KIT-
062F1300



TE Part # 2151519-1
OCEAN_2.0 APPLICATOR-S-
062F1300-RSM



TE Part # 5-2151519-1
OCEAN_2.0 APPLICATOR-S-
062F1300-RSM



TE Part # 2305570-1
Strip Terminal Cutter-Side Feed-No
Crimp



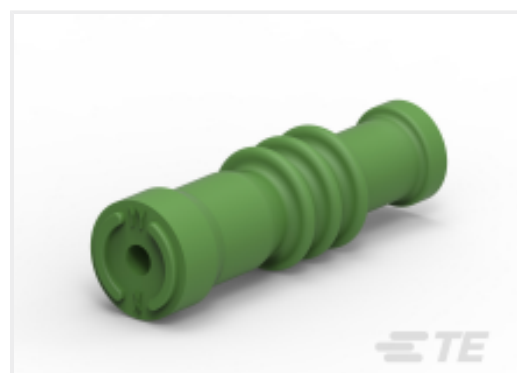
TE Part # 5-2151519-2
OCEAN_2.0 APPLICATOR-S-
062F1300-RSA



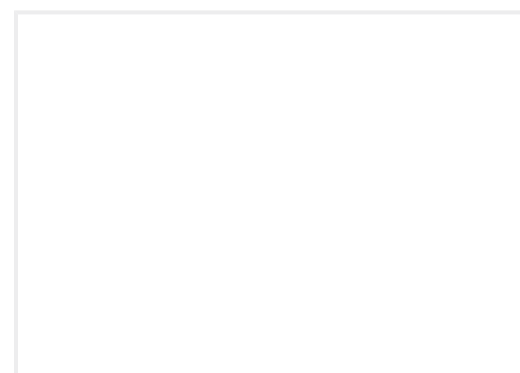
TE Part # CAT-M4596-CH8172
HPF 1.2, CONNECTOR HOUSING



TE Part # 1-967067-1
MQS SGL WIRE SEAL



TE Part # 2297817-1
SINGLE WIRE SEAL,HPF 1.2,RUBBER

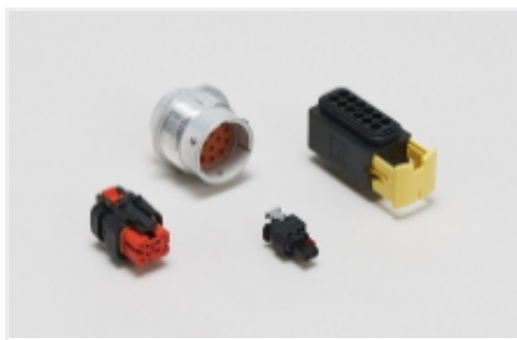


TE Part # 3-2151519-2
OCEAN_2.0 APPLICATOR-S-
062F1300-RSD

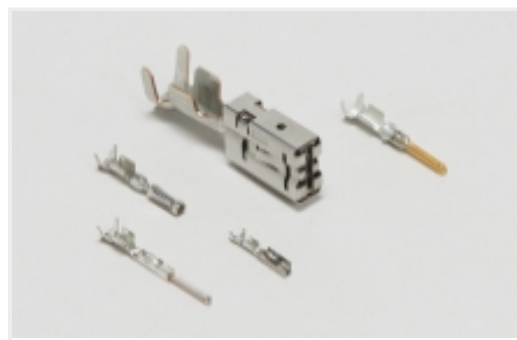


TE Part # CAT-NC1-MVA1248
MCON 1.2 48 Volt Accessories

Also in the Series | **HPF 1.2mm**



Automotive Housings(26)



Automotive Terminals(6)

Customers Also Bought



TE Part #2035334-8
CONTACT, FEMALE0.64 ,20.35SQMM



TE Part #CAT-AM705-T273
AMP MCP, RECEPTACLE AND TAB



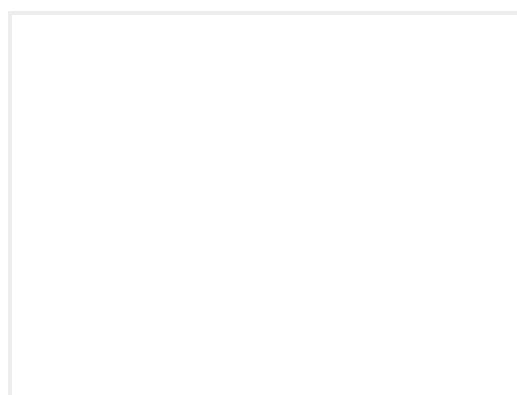
TE Part #968043-1
SINGLE WIRE SEAL



TE Part #1-2236269-2
24POS, MIXED,REC HSG,
20GENYMCP,ASSY,CODB



TE Part #2236269-1
24POS, MIXED,REC HSG,
20GENYMCP,ASSY,CODA



TE Part #2408510-1
HPF 1.2, TERMINAL, SWS, SN 0.35SQ
FOR KR



TE Part #2294463-3
MCON 1.2 CB TAB MONO

Documents

Product Drawings

[HPF 1.2 REC SWS AG \(0.5MM\)](#)

German

[HPF 1.2 REC SWS AG \(0.5MM\)](#)

German

[HPF 1.2 REC SWS AG \(0.5MM\)](#)

English

CAD Files

[3D PDF](#)

3D

Customer View Model

[ENG_CVM_CVM_2208362-3_C.2d_dxf.zip](#)

English

Customer View Model

[ENG_CVM_CVM_2208362-3_C.3d_igs.zip](#)

English



Customer View Model

[ENG_CVM_CVM_2208362-3_C.3d_stp.zip](#)

English

By downloading the CAD file I accept and agree to the [Terms and Conditions](#) of use.

Product Specifications

[Application Specification](#)

English

[Application Specification](#)

English