

2143315-3 ✓ ACTIVE

IMPACT

TE Internal #: 2143315-3

TE Internal Description: IMP100S,H,RA2P16C,RG,OEW39,5.5

[View on TE.com >](#)



Product Compliance

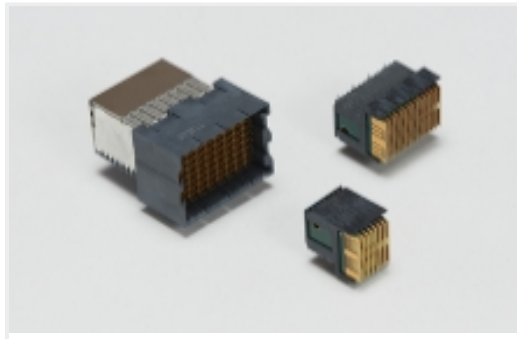
[For compliance documentation, visit the product page on TE.com>](#)

EU RoHS Directive 2011/65/EU	Compliant
EU ELV Directive 2000/53/EC	Compliant
China RoHS 2 Directive MIIT Order No 32, 2016	No Restricted Materials Above Threshold
EU REACH Regulation (EC) No. 1907/2006	Current ECHA Candidate List: JUNE 2024 (241) Candidate List Declared Against: JUNE 2024 (241) Does not contain REACH SVHC
Halogen Content	Low Halogen - Br, Cl, F, I < 900 ppm per homogenous material. Also BFR/CFR/PVC Free
Solder Process Capability	Not applicable for solder process capability

Product Compliance Disclaimer

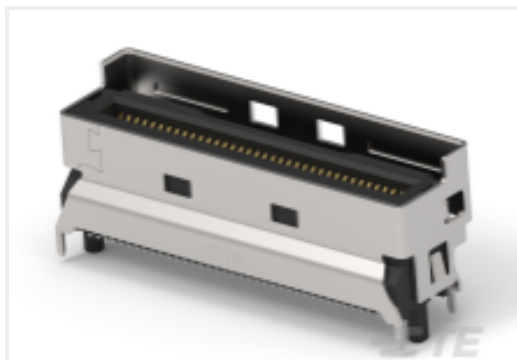
This information is provided based on reasonable inquiry of our suppliers and represents our current actual knowledge based on the information they provided. This information is subject to change. The part numbers that TE has identified as EU RoHS compliant have a maximum concentration of 0.1% by weight in homogenous materials for lead, hexavalent chromium, mercury, PBB, PBDE, DBP, BBP, DEHP, DIBP, and 0.01% for cadmium, or qualify for an exemption to these limits as defined in the Annexes of Directive 2011/65/EU (RoHS2). Finished electrical and electronic equipment products will be CE marked as required by Directive 2011/65/EU. Components may not be CE marked. Additionally, the part numbers that TE has identified as EU ELV compliant have a maximum concentration of 0.1% by weight in homogenous materials for lead, hexavalent chromium, and mercury, and 0.01% for cadmium, or qualify for an exemption to these limits as defined in the Annexes of Directive 2000/53/EC (ELV). Regarding the REACH Regulation, the information TE provides on SVHC in articles for this part number is based on the latest European Chemicals Agency (ECHA) 'Guidance on requirements for substances in articles' posted at this URL: <https://echa.europa.eu/guidance-documents/guidance-on-reach>

Also in the Series | IMPACT



High Speed Backplane Connectors (149)

Customers Also Bought



TE Part #1-2379397-9
MCIO INTERGRATED CONN, V/T,8X, SMT TYPE



TE Part #1-406541-1
MJ,INV,1X1,6PNL G,.100"ST,SN



TE Part #796136-1
ASSY, SMT BATTERY CONN



TE Part #1934949-1
Tinman 5pr 8col vert recpt 15mm stack



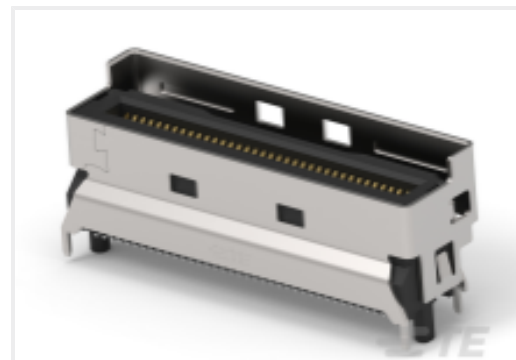
TE Part #390088-2
BLACK HSG WITH 15AU CONTACT



TE Part #5-147118-1
03 MODII HDR SR SFMNT B/A .100



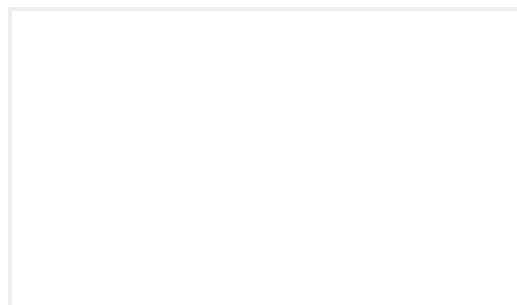
TE Part #1775485-1
Battery Holder, 3.6mm, BLK,low profile



TE Part #1-2379397-5
MCIO INTERGRATED CONN, V/T,8X, SMT TYPE



TE Part #2143309-3
IMP100S,H,RA2P16C,UG,OEW39,5.5



TE Part #2468001-1
MULTI-BEAM HEIGHT

Documents

Product Drawings

[IMP100S,H,RA2P16C,RG,OEW39,5.5](#)

English

CAD Files

Customer View Model

[ENG_CVM_CVM_2143315-3_B.2d_dxf.zip](#)

English

[3D PDF](#)



3D

Customer View Model

[ENG_CVM_CVM_2143315-3_B.3d_igs.zip](#)

English

Customer View Model

[ENG_CVM_CVM_2143315-3_B.3d_stp.zip](#)

English

By downloading the CAD file I accept and agree to the [Terms and Conditions](#) of use.

Product Specifications

[Application Specification](#)

English

Agency Approvals

[Agency Approval Document](#)

English