



**AMP-METRIMATE**

TE Internal #: 2007022-1

RJ45 Connector, Multiple Ports, 2 x 1, Jack, Shielded, Cat 5, Standard - Latch Down, 8 Position, Standard Profile, AMP-METRIMATE

[View on TE.com >](#)

Connectors > Modular Jacks & Plugs > RJ45 Connectors



Modular Jack & Plug Interface Type: **RJ45**

Port Configuration: **Multiple Ports**

Port Matrix Configuration: **2 x 1**

Modular Jacks & Plugs Products: **RJ Type Jacks & Plugs**

Connector Contact Density: **Standard**

**Features**

**Packaging Features**

Packaging Quantity	45
Packaging Method	Tray

**Mechanical Attachment**

Panel Mount Feature	Without
Connector Mounting Type	Panel Mount, Board Mount

**Contact Features**

Contact Underplating Material	Nickel
PCB Contact Termination Area Plating Material Finish	Matte
PCB Contact Termination Area Plating Material	Tin
Contact Current Rating (Max)	1.5 A, .2 A
Contact Mating Area Plating Material	Gold
Contact Base Material	Phosphor Bronze
Contact Mating Area Plating Material Thickness	1.27 µm[50 µin]

**Body Features**

Shield Plating Material	Nickel
Shield Material	Brass
Modular Jack Latch Orientation	Standard - Latch Down
Connector Profile	Standard



### Industry Standards

UL Flammability Rating	UL 94V-0
Performance Category	Cat 5

### Operation/Application

Indicator Type	No Indicator
Shielded	Yes
Circuit Application	Signal

### Configuration Features

Number of PCB Ground Tabs	6
Multiple Port Configuration	Stacked
Port Configuration	Multiple Ports
Port Matrix Configuration	2 x 1
Connector Contact Density	Standard
Number of Positions	8
Number of Loaded Positions	8
PCB Mount Orientation	Right Angle

### Product Type Features

Connector Product Type	Connector Assembly
Modular Jack & Plug Interface Type	RJ45
Modular Jacks & Plugs Products	RJ Type Jacks & Plugs
Modular Connector Style	Jack
Grounding Options	PCB and Panel Ground
Connector & Contact Terminates To	Printed Circuit Board

### Termination Features

Termination Method to PCB	Through Hole - Solder
Termination Post & Tail Length	3.56 mm[.14 in]

### Housing Features

Mating Entry Location	Side
Centerline (Pitch)	1.02 mm[.04 in]
Housing Color	Black
Housing Material	High Temperature Thermoplastic

### Dimensions



Connector Height	25.27 mm[.995 in]
------------------	-------------------

### Usage Conditions

Operating Temperature Range	-40 – 85 °C[-40 – 185 °F]
-----------------------------	---------------------------

### Other

EU RoHS Compliance	Compliant
--------------------	-----------

EU ELV Compliance	Compliant
-------------------	-----------

### Product Compliance

[For compliance documentation, visit the product page on TE.com>](#)

EU RoHS Directive 2011/65/EU	Compliant
------------------------------	-----------

EU ELV Directive 2000/53/EC	Compliant
-----------------------------	-----------

China RoHS 2 Directive MIIT Order No 32, 2016	No Restricted Materials Above Threshold
---	---

EU REACH Regulation (EC) No. 1907/2006	Current ECHA Candidate List: JUNE 2024 (241) Candidate List Declared Against: JUNE 2023 (235) Does not contain REACH SVHC
--	---

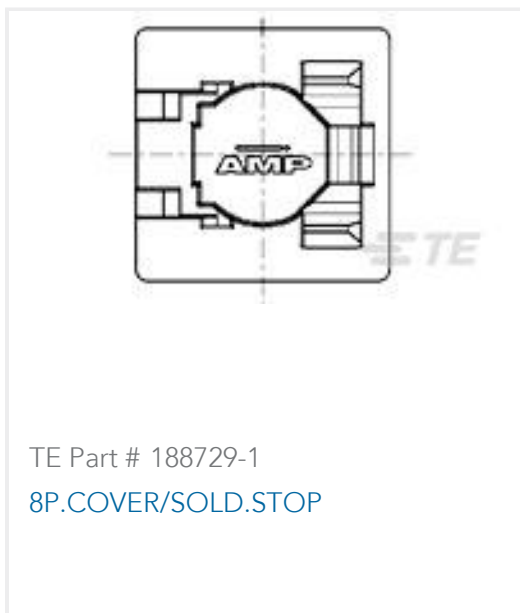
Halogen Content	Not Low Halogen - contains Br or Cl > 900 ppm.
-----------------	--

Solder Process Capability	Pin-in-Paste capable to 260°C
---------------------------	-------------------------------

#### Product Compliance Disclaimer

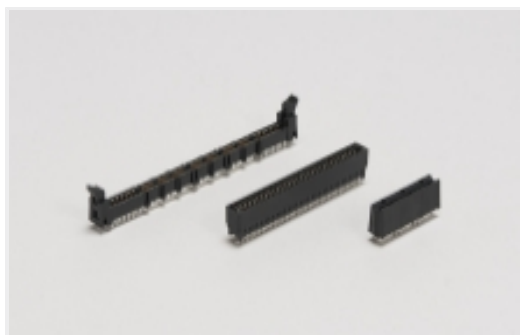
This information is provided based on reasonable inquiry of our suppliers and represents our current actual knowledge based on the information they provided. This information is subject to change. The part numbers that TE has identified as EU RoHS compliant have a maximum concentration of 0.1% by weight in homogenous materials for lead, hexavalent chromium, mercury, PBB, PBDE, DBP, BBP, DEHP, DIBP, and 0.01% for cadmium, or qualify for an exemption to these limits as defined in the Annexes of Directive 2011/65/EU (RoHS2). Finished electrical and electronic equipment products will be CE marked as required by Directive 2011/65/EU. Components may not be CE marked. Additionally, the part numbers that TE has identified as EU ELV compliant have a maximum concentration of 0.1% by weight in homogenous materials for lead, hexavalent chromium, and mercury, and 0.01% for cadmium, or qualify for an exemption to these limits as defined in the Annexes of Directive 2000/53/EC (ELV). Regarding the REACH Regulation, the information TE provides on SVHC in articles for this part number is based on the latest European Chemicals Agency (ECHA) 'Guidance on requirements for substances in articles' posted at this URL: <https://echa.europa.eu/guidance-documents/guidance-on-reach>

### Compatible Parts



TE Part # 188729-1  
8P.COVER/SOLD.STOP

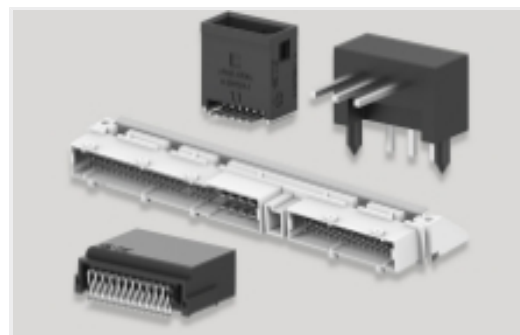
### Also in the Series | AMP-METRIMATE



Card Edge Power Connectors(1)



Connector Hardware(1)



PCB Headers & Receptacles(8)



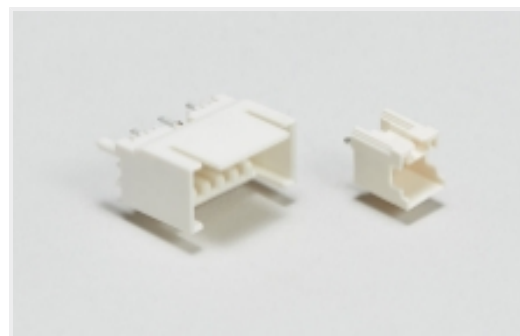
Rack & Panel Connectors(1)



Rectangular Power Connectors(2)

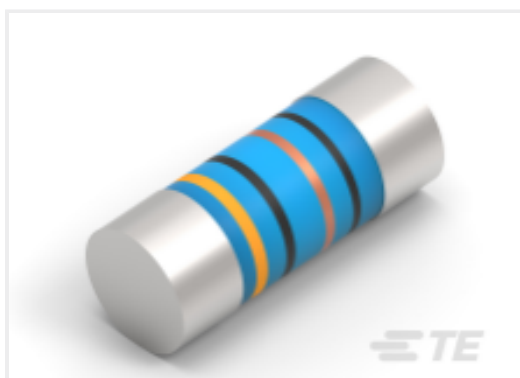


SO DIMM Sockets(12)



Wire-to-Board Headers & Receptacles (2)

### Customers Also Bought



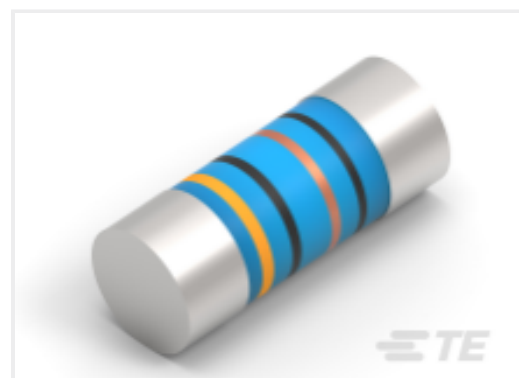
TE Part #6-2176315-3  
MELF SMA\_A 12K 1% 50PPM 0204 0.4 W



TE Part #5558382-1  
MJ,R/A,8P,SHLD



TE Part #2015698-2  
RF CA,UMCC GEN2-GEN2,0.81MM CABLE,L100MM



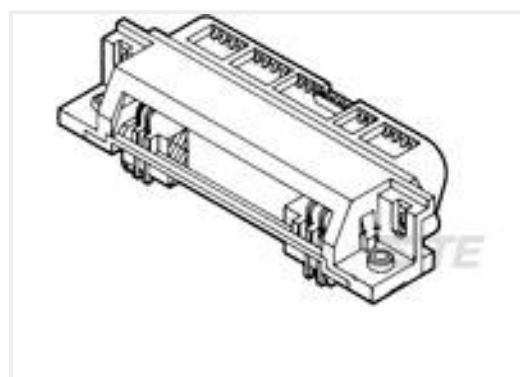
TE Part #5-2176315-6  
MELF SMA\_A 3K3 1% 50PPM 0204 0.4 W



TE Part #6337194-1  
BATTERY CONNECTOR ASSEMBLY



TE Part #53833-1  
SOLIS SPR SPADE 16-14 8



TE Part #5552726-3  
ASSY,PLUG,50 POSN, RTANG, PCB



TE Part #216415-4  
128P.IEC-C FEM.CONN



## Documents

### Product Drawings

[STK MJ ASSY,8POS,2X1,SHLD,CAT5](#)

English

### CAD Files

[3D PDF](#)

3D

Customer View Model

[ENG\\_CVM\\_CVM\\_2007022-1\\_B1\\_c-2007022-1-b1.2d\\_dxf.zip](#)

English

Customer View Model

[ENG\\_CVM\\_CVM\\_2007022-1\\_B1\\_c-2007022-1-b1.3d\\_igs.zip](#)

English

Customer View Model

[ENG\\_CVM\\_CVM\\_2007022-1\\_B1\\_c-2007022-1-b1.3d\\_stp.zip](#)

English

By downloading the CAD file I accept and agree to the [Terms and Conditions](#) of use.

### Product Specifications

[Application Specification](#)

English