

HSC200R47J ✓ ACTIVE

CGS | CGS HS

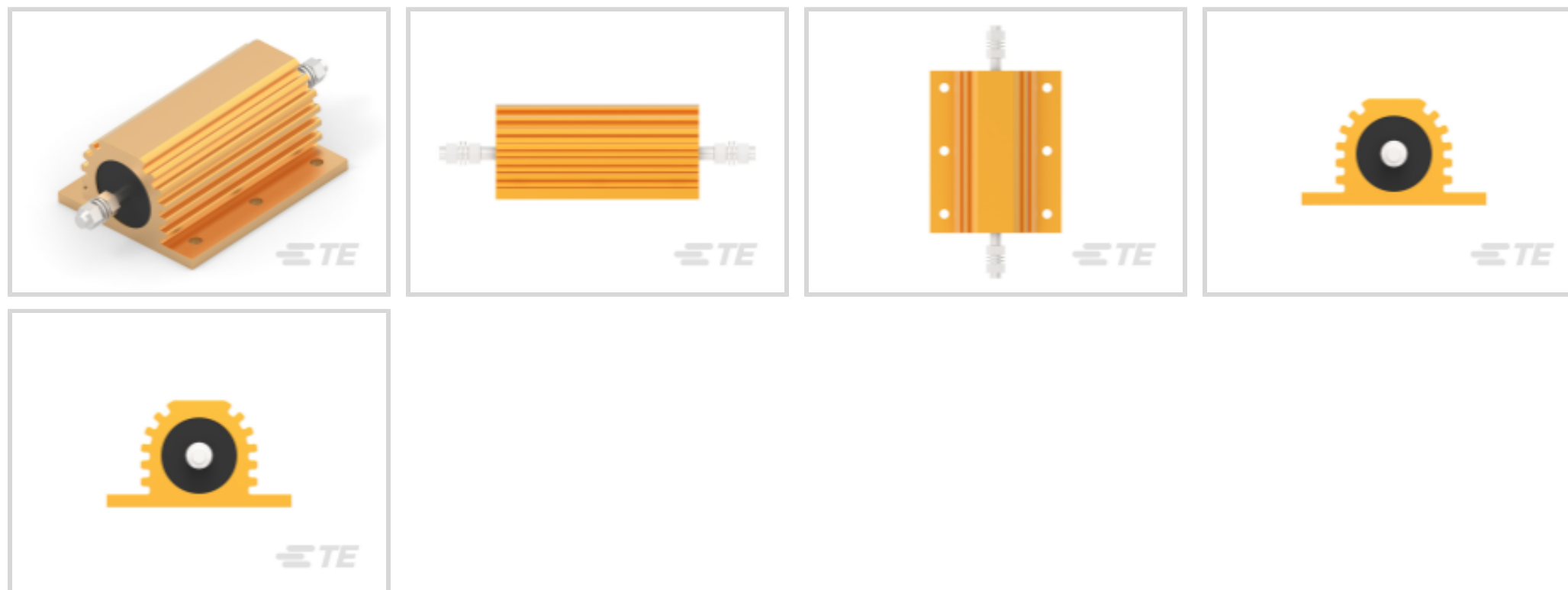
TE Internal #: 2-1630019-8

.47 ohm Chassis Mount Resistor, 200 W, Wire Wound, 2 Terminations, ± 50 ppm/ $^{\circ}\text{C}$, 5 %, M6 Threaded Stud, Loose Piece - Tray, CGS HS

[View on TE.com >](#)



Passive Components > Resistors > Chassis Mount Resistors > Power Resistors: Aluminum Housed, HSA



Resistor Type: **Power Resistor**

Resistance Class: **Up to 1k Ω**

Resistance Value: **.47 Ω**

Power Rating: **200 W**

Element Type: **Wire Wound**

[All Power Resistors: Aluminum Housed, HSA \(384\)](#)

Features

Electrical Characteristics

Operating Voltage	1900 VAC
Resistance Class	Up to 1k Ω
Resistance Value	.47 Ω
Power Rating	200 W
Passive Component Tolerance	5 %

Product Type Features

Resistor Type	Power Resistor
Element Type	Wire Wound

Configuration Features

Number of Resistors	1
---------------------	---

Termination Features

Number of Terminations	2
------------------------	---



Chassis Mount Resistor Termination Type	M6 Threaded Stud
---	------------------

Mechanical Attachment

Panel Mount Feature Type	Flange with Mounting Holes
--------------------------	----------------------------

Dimensions

Product Height	42 mm[1.654 in]
----------------	-----------------

Product Length	143 mm[5.629 in]
----------------	------------------

Product Width	73 mm[2.874 in]
---------------	-----------------

Usage Conditions

Temperature Coefficient	± 50 ppm/ $^{\circ}$ C
-------------------------	----------------------------

Packaging Features

Packaging Method	Loose Piece - Tray
------------------	--------------------

Other

EU RoHS Compliance	Compliant
--------------------	-----------

EU ELV Compliance	Compliant
-------------------	-----------

Product Compliance

[For compliance documentation, visit the product page on TE.com>](#)

EU RoHS Directive 2011/65/EU	Compliant
------------------------------	-----------

EU ELV Directive 2000/53/EC	Compliant
-----------------------------	-----------

China RoHS 2 Directive MIIT Order No 32, 2016	No Restricted Materials Above Threshold
---	---

EU REACH Regulation (EC) No. 1907/2006	Current ECHA Candidate List: JUNE 2024 (241) Candidate List Declared Against: JAN 2021 (211) Does not contain REACH SVHC
--	--

Halogen Content	Low Halogen - Br, Cl, F, I < 900 ppm per homogenous material. Also BFR/CFR/PVC Free
-----------------	---

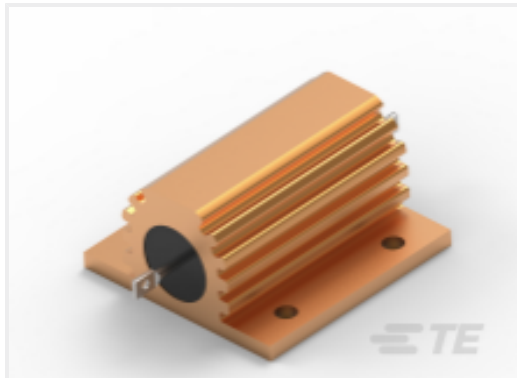
Solder Process Capability	Not applicable for solder process capability
---------------------------	--

Product Compliance Disclaimer

This information is provided based on reasonable inquiry of our suppliers and represents our current actual knowledge based on the information they provided. This information is subject to change. The part numbers that TE has identified as EU RoHS compliant have a maximum concentration of 0.1% by weight in homogenous materials for lead, hexavalent chromium, mercury, PBB, PBDE, DBP, BBP, DEHP, DIBP, and 0.01% for cadmium, or qualify for an exemption to these limits as defined in the Annexes of Directive 2011/65/EU (RoHS2). Finished electrical and electronic equipment products will be CE marked as required by Directive 2011/65/EU. Components may not be CE marked. Additionally, the part numbers that TE has identified as EU ELV compliant have a maximum concentration of 0.1% by weight in homogenous materials for lead, hexavalent chromium, and mercury, and 0.01% for cadmium, or qualify for an exemption to these limits

as defined in the Annexes of Directive 2000/53/EC (ELV). Regarding the REACH Regulation, the information TE provides on SVHC in articles for this part number is based on the latest European Chemicals Agency (ECHA) 'Guidance on requirements for substances in articles' posted at this URL: <https://echa.europa.eu/guidance-documents/guidance-on-reach>

Compatible Parts



TE Part # CAT-C339-H85913
Power Resistors: Aluminum Housed, HSA



TE Part # 1630027-1
HSC300 100R 5%

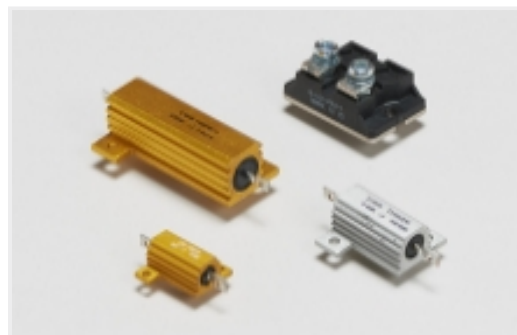


TE Part # 1625999-3
HSC100 10R 5%

Also in the Series | CGS HS



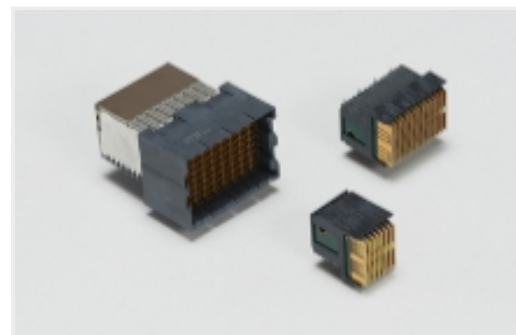
Automotive Housings(1)



Chassis Mount Resistors(1069)



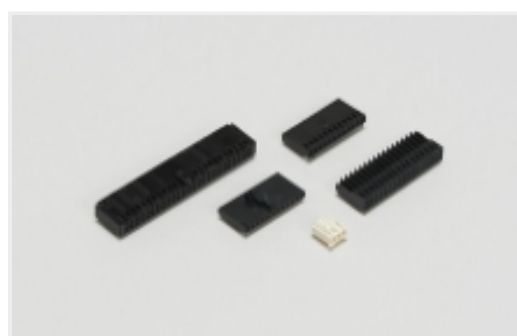
FFC Connectors(1)



High Speed Backplane Connectors(10)



RJ45 Connectors(1)



Wire-to-Board Connector Assemblies & Housings(1)

Customers Also Bought



TE Part #206071-1
SZ 22, SOCKET, NON-MAG



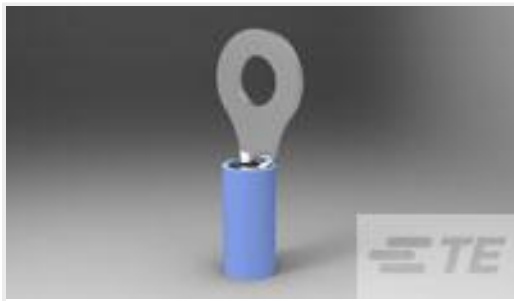
TE Part #ES43462001
EVDW-19/6-3-STK



TE Part #1630020-6
NHSC200 1R5 5%



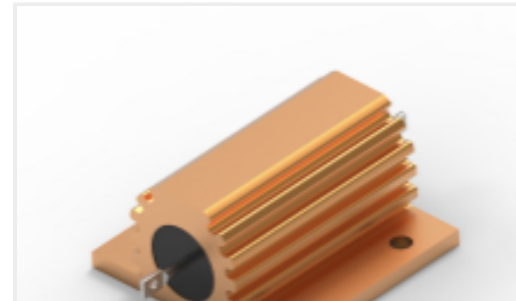
TE Part #6-1625999-7
HSC100 204R 5%



TE Part #320563
TERMINAL,PIDG R 16-14 1/4



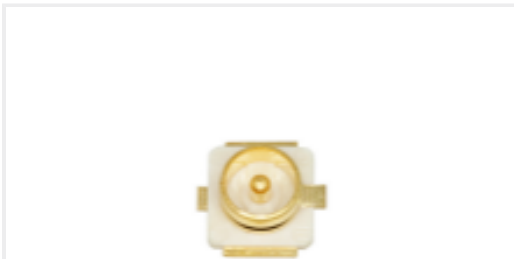
TE Part #104069-7
60 SYSTEM 50 HDR DRRA SHRD



TE Part #CAT-C339-H85913
Power Resistors: Aluminum Housed,
HSA



TE Part #282857-3
TERMI-BLOK PCB MOUNT 90 3P.5



TE Part #CONUFL001-SMD-T
U.FL/MHF1 Jack 50 Ohm PCB Surface
Mount

Documents

CAD Files

Customer View Model

[ENG_CVM_CVM_2-1630019-8_W1.3d_igs.zip](#)

English

Customer View Model

[ENG_CVM_CVM_2-1630019-8_W1.3d_stp.zip](#)

English

By downloading the CAD file I accept and agree to the [Terms and Conditions](#) of use.

Datasheets & Catalog Pages

[4-1773460-6_RESISTIVE_SOLUTIONS_RAIL](#)

English

[1309350_PASSIVE_COMPONENT](#)

English

[8-1773459-4_POWER_FILTERING_AND_RESISTIVE_SOLUTIONS_FOR_ELEVATORS_AND_ESCALATORS](#)

English

[Aluminium Housed Power Resistors - Type HS Series](#)

English