



**Kilovac**

TE Internal #: 2-1618002-4

High Voltage Contactor, DC, 1 Form X SPST-NO, 400 A Contact Rating, 12 VDC Coil Voltage, 28 – 1800 VDC Contact Voltage, Panel Mount

[View on TE.com >](#)

Relays & Contactors > Electromechanical Relays



Relay & Contactor Type: **High Voltage Contactor**

Contact Current Rating: **400 A**

Contact Arrangement: **1 Form X SPST-NO**

Current Type: **DC**

Coil Voltage Rating: **12 VDC**

**Features**

**Product Type Features**

Relay & Contactor Type	High Voltage Contactor
------------------------	------------------------

**Configuration Features**

Relay Options	Not RF Rated, Power Switching
Contact Arrangement	1 Form X SPST-NO

**Electrical Characteristics**

Contact Switching Voltage (Max)	1800 VDC
Contact Current Rating	400 A
Coil Voltage Rating	12 VDC
Contact Voltage Rating	28 – 1800 VDC
Coil Resistance	3 Ω

**Contact Features**

Contact Material	Copper
------------------	--------

**Termination Features**

Main Termination & Connection Type	Screw Terminals
Coil Termination & Connection Type	Flying Leads

**Mechanical Attachment**

Product Mounting Feature Type	Flange with Mounting Holes
Product Mount Type	Panel Mount



### Operation/Application

Current Type	DC
--------------	----

### Other

Contact Current Class	>200 – ≤500 A
-----------------------	---------------

### Product Compliance

[For compliance documentation, visit the product page on TE.com>](#)

EU RoHS Directive 2011/65/EU	Not Compliant
EU ELV Directive 2000/53/EC	Not Compliant
China RoHS 2 Directive MIIT Order No 32, 2016	有害物质含量超出标准 Restricted Substance(s) Above Threshold
EU REACH Regulation (EC) No. 1907/2006	Current ECHA Candidate List: JUNE 2025 (250) Candidate List Declared Against: JAN 2022 (223) SVHC > Threshold: Not Yet Reviewed
Halogen Content	Not Yet Reviewed for halogen content
Solder Process Capability	Not applicable for solder process capability

#### Product Compliance Disclaimer

This information is provided based on reasonable inquiry of our suppliers and represents our current actual knowledge based on the information they provided. This information is subject to change. The part numbers that TE has identified as EU RoHS compliant have a maximum concentration of 0.1% by weight in homogenous materials for lead, hexavalent chromium, mercury, PBB, PBDE, DBP, BBP, DEHP, DIBP, and 0.01% for cadmium, or qualify for an exemption to these limits as defined in the Annexes of Directive 2011/65/EU (RoHS2). Finished electrical and electronic equipment products will be CE marked as required by Directive 2011/65/EU. Components may not be CE marked. Additionally, the part numbers that TE has identified as EU ELV compliant have a maximum concentration of 0.1% by weight in homogenous materials for lead, hexavalent chromium, and mercury, and 0.01% for cadmium, or qualify for an exemption to these limits as defined in the Annexes of Directive 2000/53/EC (ELV). Regarding the REACH Regulations, TE's information on SVHC in articles for this part number is still based on the European Chemical Agency (ECHA) 'Guidance on requirements for substances in articles' (Version: 2, April 2011), applying the 0.1% weight on weight concentration threshold at the finished product level. TE is aware of the European Court of Justice ruling of September 10th, 2015 also known as O5A (Once An Article Always An Article) stating that, in case of 'complex object', the threshold for a SVHC must be applied to both the product as a whole and simultaneously to each of the articles forming part of its composition. TE has evaluated this ruling based on the new ECHA "Guidance on requirements for substances in articles" (June 2017, version 4.0) and will be updating its statements accordingly.

### Compatible Parts



TE Part # 1618002-7  
EV200AAANA=RELAY, EV200 SPST-N

## Customers Also Bought



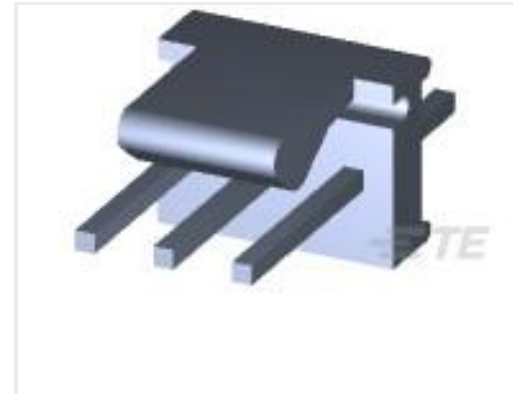
TE Part #800471-SF  
FN350-30-33



TE Part #806126-SF  
FN3256H-16-29



TE Part #3-640441-2  
02P MTA100 CONN ASSY WHT



TE Part #640456-3  
03P MTA100 HDR ASSY F/L SQ STR



TE Part #5-1393211-4  
T92P11D22-24



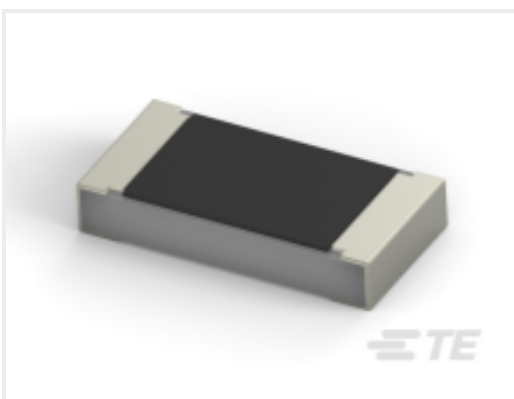
TE Part #5-1618387-7  
LEV200A5NAF=RELAY, 24Vdc SPST NO



TE Part #1630186-2  
HSA50 R68 5%



TE Part #1-2176230-3  
3522 8R2 5% 3W



TE Part #CAT-C339-A76C  
SMD Power Resistor: 3 Watt, 5% Tol

## Documents

### Product Drawings

[EV250-2A=RELAY, 12VDC SPST-NO](#)

English

### Datasheets & Catalog Pages

[5-1773450-5\\_sec7\\_EV250](#)

English