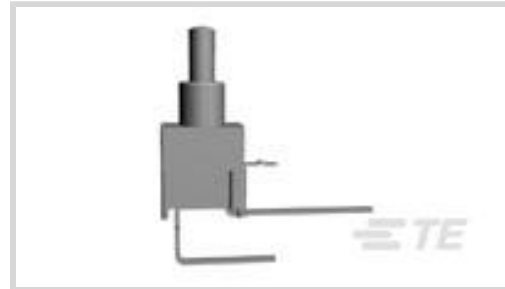




Switches > Push Button Switches

Configuration (Pole-Throw): **Single Pole - Single Throw**Number of Actuators: **Single**Actuator Profile: **Flush**Bushing Style: **Unthreaded**Illuminated: **Without**

Features

Dimensions

Button Width	2.54 mm[.1 in]
--------------	----------------

Termination Features

Termination Method to PCB	Through Hole - Solder
---------------------------	-----------------------

Packaging Features

Packaging Method	Loose Piece
------------------	-------------

Contact Features

Contact Base Material	Copper Alloy
Switch Contact Plating Material	Gold over Nickel

Housing Features

Low Profile	No
Process Sealed	Yes

Product Type Features

Switch Connection Type	Printed Circuit
Illuminated	Without
Actuator Style	Round Actuator

Body Features

Case Material	Thermoplastic (LCP)
Actuator Material	Thermoplastic
Product Orientation	Vertical Right Angle

Actuator Profile	Flush
Bushing Style	Unthreaded
Actuator Color	Black

Configuration Features

Configuration (Pole-Throw)	Single Pole - Single Throw
Number of Actuators	Single
Snap Action	Without
Support Bracket	With
Switch Feedback Type	Non-Tactile
Operating Function	Off (On)

Electrical Characteristics

Contact Current Rating	.4 A
Operating Voltage Range	20 VDC

Other

EU ELV Compliance	Compliant
-------------------	-----------

Product Compliance

[For compliance documentation, visit the product page on TE.com>](#)

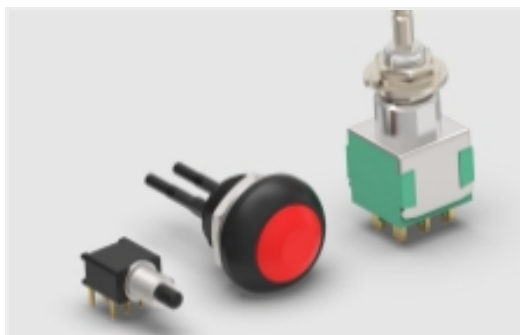
EU RoHS Directive 2011/65/EU	Not Yet Reviewed
EU ELV Directive 2000/53/EC	Compliant
China RoHS 2 Directive MIIT Order No 32, 2016	No Restricted Materials Above Threshold
EU REACH Regulation (EC) No. 1907/2006	Current ECHA Candidate List: JUNE 2024 (241) Candidate List Declared Against: JUN 2016 (169) SVHC > Threshold: Not Yet Reviewed
Halogen Content	Not Yet Reviewed for halogen content
Solder Process Capability	Wave solder capable to 265°C

Product Compliance Disclaimer

This information is provided based on reasonable inquiry of our suppliers and represents our current actual knowledge based on the information they provided. This information is subject to change. The part numbers that TE has identified as EU RoHS compliant have a maximum concentration of 0.1% by weight in homogenous materials for lead, hexavalent chromium, mercury, PBB, PBDE, DBP, BBP, DEHP, DIBP, and 0.01% for cadmium, or qualify for an exemption to these limits as defined in the Annexes of Directive 2011/65/EU (RoHS2). Finished electrical and electronic equipment products will be CE marked as required by Directive 2011/65/EU. Components may not be CE marked. Additionally, the part numbers that TE has identified as EU ELV compliant have a maximum concentration of 0.1% by weight in homogenous

materials for lead, hexavalent chromium, and mercury, and 0.01% for cadmium, or qualify for an exemption to these limits as defined in the Annexes of Directive 2000/53/EC (ELV). Regarding the REACH Regulations, TE's information on SVHC in articles for this part number is still based on the European Chemical Agency (ECHA) 'Guidance on requirements for substances in articles'(Version: 2, April 2011), applying the 0.1% weight on weight concentration threshold at the finished product level. TE is aware of the European Court of Justice ruling of September 10th, 2015 also known as O5A (Once An Article Always An Article) stating that, in case of 'complex object', the threshold for a SVHC must be applied to both the product as a whole and simultaneously to each of the articles forming part of its composition. TE has evaluated this ruling based on the new ECHA "Guidance on requirements for substances in articles" (June 2017, version 4.0) and will be updating its statements accordingly.

Also in the Series | Alcoswitch TSP



General Purpose Push Button Switches (19)

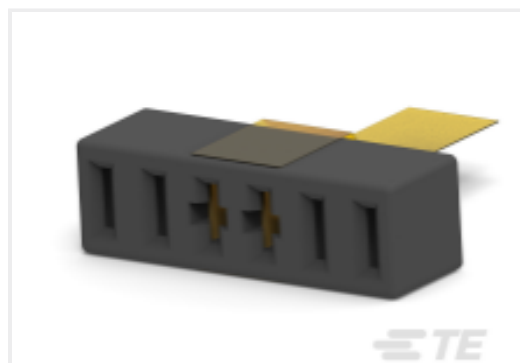


Push Button Switches(19)

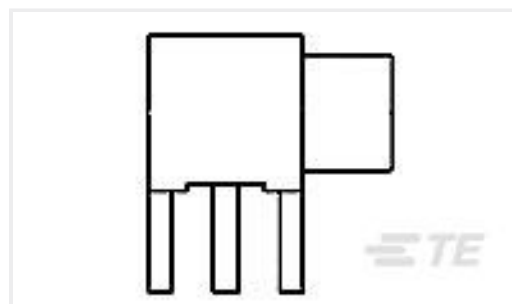
Customers Also Bought



TE Part #2170024-1
1x4 QSFP Cage Subassy,Thru Bezel



TE Part #1926303-1
Cover Connector, FLATPAQ



TE Part #1061030-1
5864 5003 10,OSX PCB RA JACK



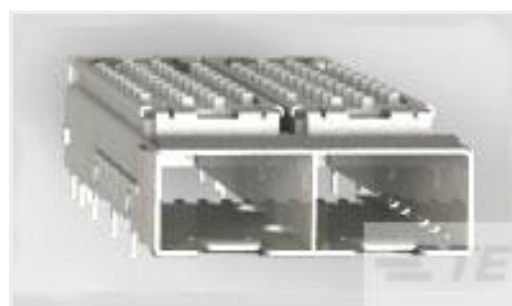
TE Part #5223972-1
UNIV. POWER MODULE R/A HEADER



TE Part #415001-2
LOCKWASHER



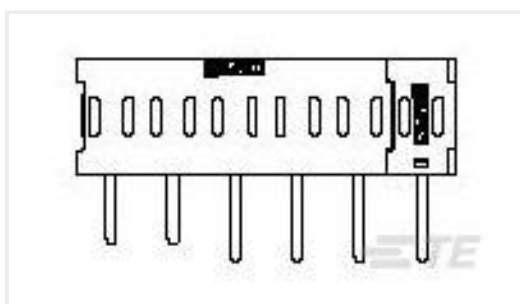
TE Part #6609013-2
6EH9=F7288 S0



TE Part #2198230-2
SFP+ Enhanced 1x2, SAN Heatsink



TE Part #2198235-3
SFP+ Enhanced 1x6, Networking Heatsink



TE Part #6766496-1
CONNECTOR, PIN, RIGHT ANGLE, SOLDER,FLAT



TE Part #6609005-7
3EAS1=F7115N S0



Documents

Product Drawings

[TSPDF11CGVRA004](#)

English

CAD Files

[3D PDF](#)

English

Customer View Model

[ENG_CVM_2-1571990-7_A.2d_dxf.zip](#)

English

Customer View Model

[ENG_CVM_2-1571990-7_A.3d_igs.zip](#)

English

Customer View Model

[ENG_CVM_2-1571990-7_A.3d_stp.zip](#)

English

By downloading the CAD file I accept and agree to the [Terms and Conditions](#) of use.

Datasheets & Catalog Pages

[SWITCHES_CORE_PROGRAM_CATALOG](#)

English