

1955660-7 ✓ ACTIVE

RAST | RAST 5 IDC Connectors, RAST 5D

TE Internal #: 1955660-7

PCB Mount Header, Right Angle, Wire-to-Board, 7 Position, 5 mm [.197 in] Centerline, Fully Shrouded, Tin, Through Hole - Solder, Power, Hybrid

[View on TE.com >](#)



Connectors > PCB Connectors > PCB Headers & Receptacles



PCB Connector Assembly Type: **PCB Mount Header**

PCB Mount Orientation: **Right Angle**

Connector System: **Wire-to-Board**

Number of Positions: **7**

Number of Rows: **1**

Features

Electrical Characteristics

Operating Voltage	250 VAC
-------------------	---------

Dimensions

Connector Width	17.9 mm[.74 in]
PCB Thickness (Recommended)	1.5 mm[.059 in]
Connector Height	14.9 mm[.58 in]
Connector Length	35.56 mm[1.4 in]

Industry Standards

Compatible With Agency/Standards Products	UL
Compatible With Approved Standards Products	UL E28476
UL Flammability Rating	UL 94V-2

Mechanical Attachment

Mating Retention	With
Mating Alignment Type	Keyed, Polarization
PCB Mount Retention	Without



PCB Mount Alignment	Without
Connector Mounting Type	Board Mount
Mating Alignment	With

Termination Features

Square Termination Post & Tail Dimension	.8 mm[.032 in]
Termination Method to PCB	Through Hole - Solder

Contact Features

Contact Underplating Material	Nickel
Contact Underplating Material Thickness	1.3 μm [51.18 μin]
PCB Contact Termination Area Plating Material Finish	Matte
Contact Mating Area Plating Material Thickness	3.8 μm [149.6 μin]
Mating Tab Width	6.3 mm[.248 in]
PCB Contact Termination Area Plating Material Thickness	3.8 μm [149.6 μin]
Contact Shape & Form	Rectangular
Contact Layout	Inline
Contact Base Material	Brass
Mating Tab Thickness	.8 mm[.032 in]
PCB Contact Termination Area Plating Material	Tin
Contact Mating Area Plating Material Finish	Matte
Contact Mating Area Plating Material	Tin
Contact Type	Tab
Contact Current Rating (Max)	16 A

Housing Features

Housing Material	Nylon
Centerline (Pitch)	5 mm[.197 in]

Configuration Features

Number of Columns	7
PCB Mount Orientation	Right Angle
Number of Positions	7
Number of Rows	1

Product Type Features

PCB Connector Assembly Type	PCB Mount Header
-----------------------------	------------------



Connector System	Wire-to-Board
Header Type	Fully Shrouded
Sealable	No
Connector & Contact Terminates To	Printed Circuit Board

Body Features

Primary Product Color	Natural
-----------------------	---------

Usage Conditions

Operating Temperature Range	-40 – 105 °C[-40 – 221 °F]
-----------------------------	----------------------------

Operation/Application

Circuit Application	Power
---------------------	-------

Packaging Features

Packaging Method	Package
------------------	---------

Other

EU RoHS Compliance	Compliant
EU ELV Compliance	Compliant

Product Compliance

[For compliance documentation, visit the product page on TE.com>](#)

EU RoHS Directive 2011/65/EU	Compliant
EU ELV Directive 2000/53/EC	Compliant
China RoHS 2 Directive MIIT Order No 32, 2016	No Restricted Materials Above Threshold
EU REACH Regulation (EC) No. 1907/2006	Current ECHA Candidate List: JUNE 2024 (241) Candidate List Declared Against: JUNE 2024 (241) Does not contain REACH SVHC
Halogen Content	Not Low Halogen - contains Br or Cl > 900 ppm.
Solder Process Capability	Not reviewed for solder process capability

Product Compliance Disclaimer

This information is provided based on reasonable inquiry of our suppliers and represents our current actual knowledge based on the information they provided. This information is subject to change. The part numbers that TE has identified as EU RoHS compliant have a maximum concentration of 0.1% by weight in homogenous materials for lead, hexavalent chromium, mercury, PBB, PBDE, DBP, BBP, DEHP, DIBP, and 0.01% for cadmium, or qualify for an exemption to these limits as defined in the Annexes of Directive 2011/65/EU (RoHS2). Finished electrical and electronic equipment products will be CE marked as required by Directive 2011/65/EU. Components may not be CE marked. Additionally, the part numbers that TE has identified as EU ELV compliant have a maximum concentration of 0.1% by weight in homogenous

materials for lead, hexavalent chromium, and mercury, and 0.01% for cadmium, or qualify for an exemption to these limits as defined in the Annexes of Directive 2000/53/EC (ELV). Regarding the REACH Regulation, the information TE provides on SVHC in articles for this part number is based on the latest European Chemicals Agency (ECHA) 'Guidance on requirements for substances in articles' posted at this URL: <https://echa.europa.eu/guidance-documents/guidance-on-reach>

Compatible Parts



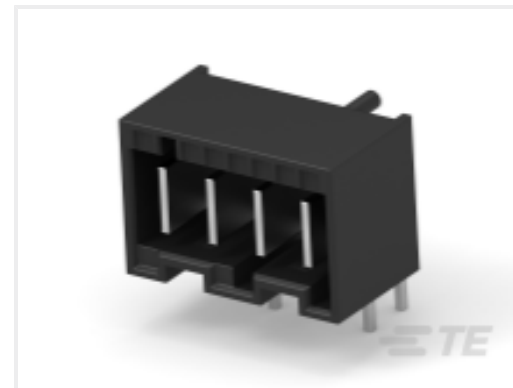
TE Part # 521386-4
ASSY PL R/A RAST5 HDR 4P SP



TE Part # 521384-7
ASSY PL R/A RAST5 HEADER 07-C



TE Part # 3-521384-7
ASSY PL R/A RAST5 HEADER 7P



TE Part # 521385-4
ASSY DIN R/A RAST5 HEADER 04-A



TE Part # 5-521385-2
ASSY DIN R/A RAST5 HEADER 02-I



TE Part # 5-1969352-2
ASSY DIN R/A RAST5 HDR 02-A, G



TE Part # 1-521384-7
ASSY PL R/A RAST5 HEADER 7P



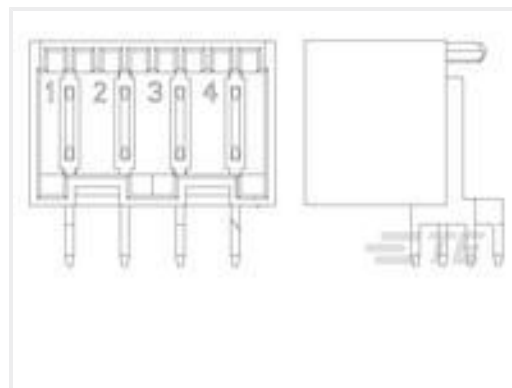
TE Part # 2-521384-7
ASSY PL R/A RAST5 HEADER 7P



TE Part # 1969352-2
ASSY DIN R/A RAST5 HDR 02-A, G

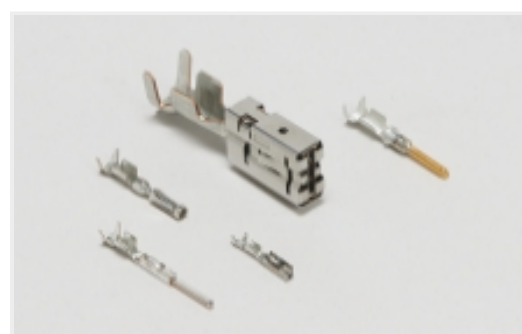


TE Part # 1-521384-2
ASSY PL R/A RAST5 HEADER 02-B



TE Part # 2178618-3
ASSY DIN R/A RAST5 HEADER 03-A

Also in the Series | RAST 5D



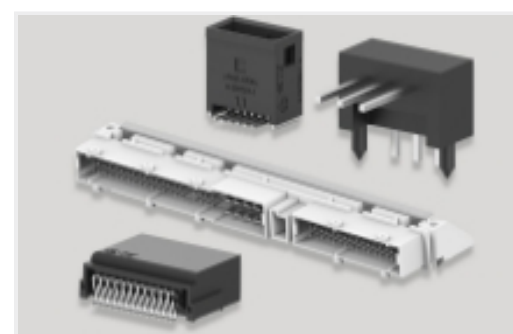
Automotive Terminals(8)



Connector Contacts(12)



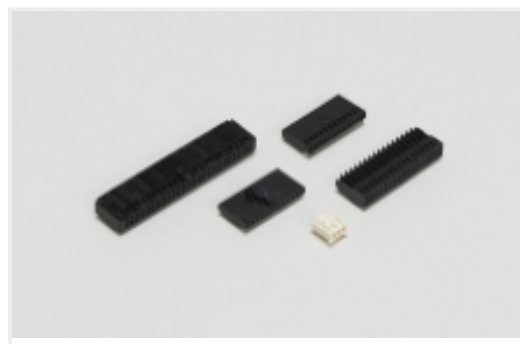
Insertion & Extraction Tools(1)



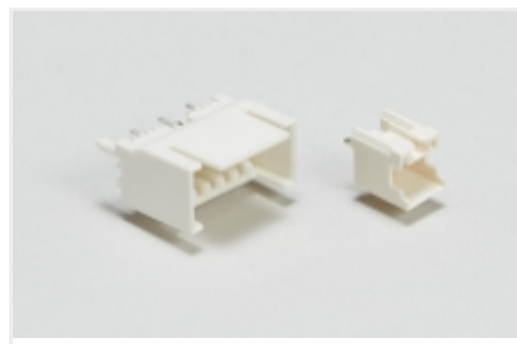
PCB Headers & Receptacles(417)



Power Contacts(3)

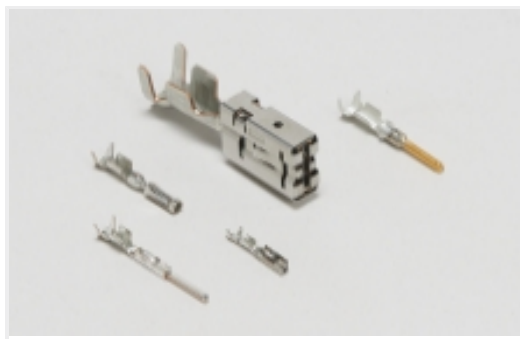


Wire-to-Board Connector Assemblies & Housings(198)



Wire-to-Board Headers & Receptacles (417)

Also in the Series | RAST 5 IDC Connectors



Automotive Terminals(8)



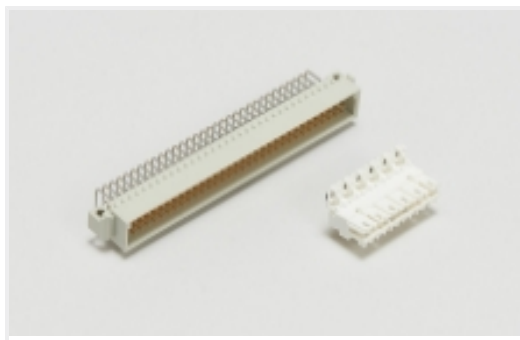
Connector Contacts(12)



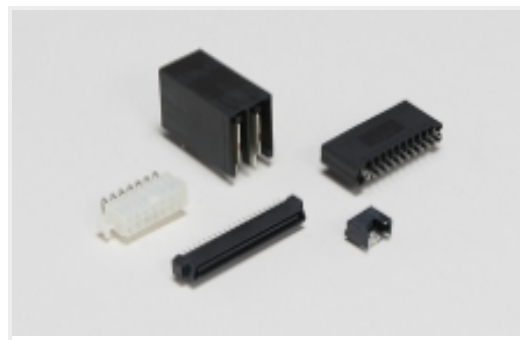
Power Contacts(3)



Rectangular Connector Housings(1)



Standard Edge Connectors(31)



Standard Rectangular Connectors(64)

Customers Also Bought



TE Part #1534072-7
AMP MF MK II ASSY/AR 7POS



TE Part #1534072-5
MULTIF.ASSY MK2 5P,AR



TE Part #2-1241965-7
7P ST-TIMER GEH



TE Part #2232043-7
7P, RAST 5 Tab Header, THV



TE Part #928343-5
5P STD-TIMER GEH



TE Part #1971845-5
5P, RAST 5 Tab Header, THV



TE Part #2-928247-5
STD TIMER GEH 5P



TE Part #964203-5
STD PW TIMER CONTACT



Documents

Product Drawings

[RAST 5,HSG,7P,RIGHT ANGLE, GWT](#)

English

CAD Files

[3D PDF](#)

3D

Customer View Model

[ENG_CVM_CVM_1955660-7_A_c-1955660-7-a.2d_dxf.zip](#)

English

Customer View Model

[ENG_CVM_CVM_1955660-7_A_c-1955660-7-a.3d_igs.zip](#)

English

Customer View Model

[ENG_CVM_CVM_1955660-7_A_c-1955660-7-a.3d_stp.zip](#)

English

By downloading the CAD file I accept and agree to the [Terms and Conditions](#) of use.

Datasheets & Catalog Pages

[RAST Connector System Catalog](#)

English

Product Specifications

[Product Specification](#)

English

Agency Approvals

[VDE Certificate](#)

English

[VDE Certificate](#)

English

[VDE Certificate](#)

English