

1939581-1 ✓ ACTIVE

Positive Lock | Positive Lock 250

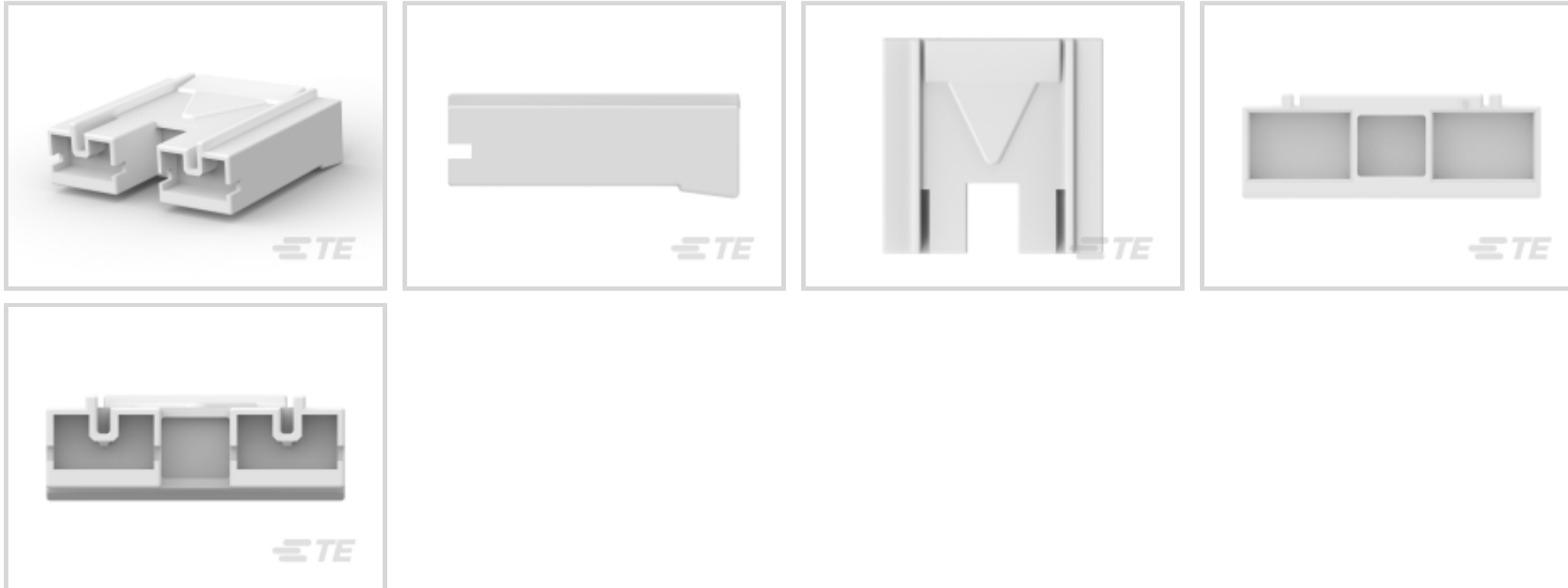
TE Internal #: 1939581-1

Receptacle, Receptacle, 2 Position, Straight, UL 94V-0, Natural, Nylon, Cable Mount (Free-Hanging), Positive Lock 250, Crimp Terminal Housings

[View on TE.com >](#)



Terminals & Splices > Terminal Housings, Insulation Sleeves & Blocks > Crimp Terminal Housings



Terminal Type: **Receptacle**

Connector & Housing Type: **Receptacle**

Number of Positions: **2**

Terminal Orientation: **Straight**

UL Flammability Rating: **UL 94V-0**

## Features

### Dimensions

Product Width	24.4 mm
Product Length	23.8 mm[.937 in]

### Packaging Features

Packaging Quantity	200
--------------------	-----

### Mechanical Attachment

Mating Alignment Type	Polarization
Mating Alignment	With
Connector Mounting Type	Cable Mount (Free-Hanging)

### Product Type Features

Connector & Contact Terminates To	Wire & Cable
Sealable	No
Connector System	Wire-to-Board, Wire-to-Wire
Connector & Housing Type	Receptacle



**Configuration Features**

Number of Positions	2
---------------------	---

**Body Features**

Primary Product Color	Natural
-----------------------	---------

**Contact Features**

Terminal Type	Receptacle
Terminal Orientation	Straight
Contact Mating Retention	With

**Housing Features**

Housing Material	Nylon
Centerline (Pitch)	15 mm [.59 in]

**Usage Conditions**

Operating Temperature Range	-40 – 105 °C [-40 – 221 °F]
-----------------------------	-----------------------------

**Industry Standards**

UL Flammability Rating	UL 94V-0
------------------------	----------

**Other**

EU RoHS Compliance	Compliant
EU ELV Compliance	Compliant

**Product Compliance**

[For compliance documentation, visit the product page on TE.com>](#)

EU RoHS Directive 2011/65/EU	Compliant
EU ELV Directive 2000/53/EC	Compliant
China RoHS 2 Directive MIIT Order No 32, 2016	No Restricted Materials Above Threshold
EU REACH Regulation (EC) No. 1907/2006	Current ECHA Candidate List: JUNE 2024 (241) Candidate List Declared Against: JUNE 2024 (241) Does not contain REACH SVHC
Halogen Content	Not Low Halogen - contains Br or Cl > 900 ppm.
Solder Process Capability	Not applicable for solder process capability

Product Compliance Disclaimer



This information is provided based on reasonable inquiry of our suppliers and represents our current actual knowledge based on the information they provided. This information is subject to change. The part numbers that TE has identified as EU RoHS compliant have a maximum concentration of 0.1% by weight in homogenous materials for lead, hexavalent chromium, mercury, PBB, PBDE, DBP, BBP, DEHP, DIBP, and 0.01% for cadmium, or qualify for an exemption to these limits as defined in the Annexes of Directive 2011/65/EU (RoHS2). Finished electrical and electronic equipment products will be CE marked as required by Directive 2011/65/EU. Components may not be CE marked. Additionally, the part numbers that TE has identified as EU ELV compliant have a maximum concentration of 0.1% by weight in homogenous materials for lead, hexavalent chromium, and mercury, and 0.01% for cadmium, or qualify for an exemption to these limits as defined in the Annexes of Directive 2000/53/EC (ELV). Regarding the REACH Regulation, the information TE provides on SVHC in articles for this part number is based on the latest European Chemicals Agency (ECHA) 'Guidance on requirements for substances in articles' posted at this URL: <https://echa.europa.eu/guidance-documents/guidance-on-reach>

## Compatible Parts



TE Part # 179973-1  
250 PL EX REC. 22-18AWG PTBR



TE Part # 179974-1  
250 PL EX REC. 18-14AWG PTBR

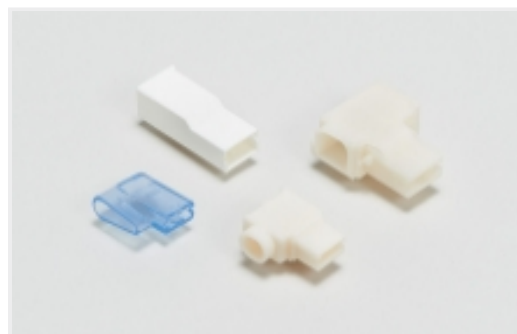


TE Part # 179975-1  
250 PL EX REC. 15-10AWG PTBR

## Also in the Series | Positive Lock 250



Automotive Terminals(1)



Crimp Terminal Housings(182)



Insertion & Extraction Tools(3)

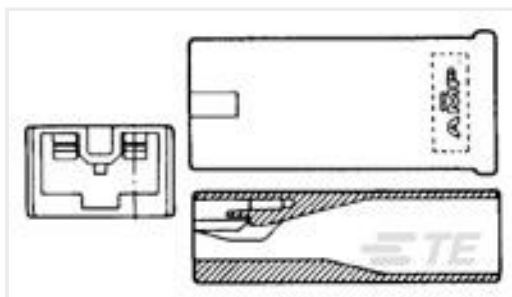


Insulation Boots & Sleeves(5)



Quick Disconnects(174)

## Customers Also Bought



TE Part #179970-2  
PL EXII 250 REC HSG 1P NYLON RED



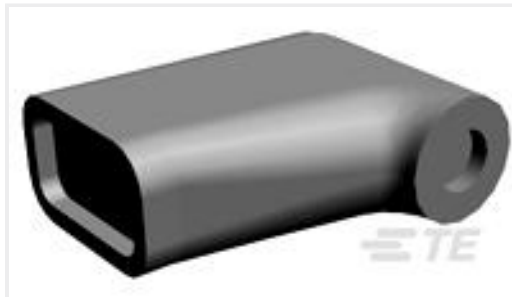
TE Part #1871867-1  
GRACE INERTIA 6.2mm PITCH PLUG 3POS



TE Part #179974-6  
250 PL EX REC. 18-14AWG PTBR



TE Part #1376476-1  
2.5 SIGNAL MATE REC CONTACT



TE Part #170891-2  
250 FASTON HSG., FLAG, REC., NATRUAL



TE Part #CAT-P8704-P729  
STD Temp Power Key Plug



TE Part #177908-1  
POWER DBL LOCK CAP HSG P/M 4P



TE Part #1-1376388-3  
5.0 PK CONN. 2P PLUG HSG (W/O GF) - RED

## Documents

### Product Drawings

[250 HSG. PL EX REC. 15mm 2P NAT](#)

English

### CAD Files

[3D PDF](#)

3D

Customer View Model

[ENG\\_CVM\\_CVM\\_1939581-1\\_D.2d\\_dxf.zip](#)

English

Customer View Model

[ENG\\_CVM\\_CVM\\_1939581-1\\_D.3d\\_igs.zip](#)

English

Customer View Model

[ENG\\_CVM\\_CVM\\_1939581-1\\_D.3d\\_stp.zip](#)

English

By downloading the CAD file I accept and agree to the [Terms and Conditions](#) of use.

### Product Specifications

[Product Specification](#)

Japanese

[250 SERIES POSITIVE LOCK EX-II CONNECTOR](#)

Japanese