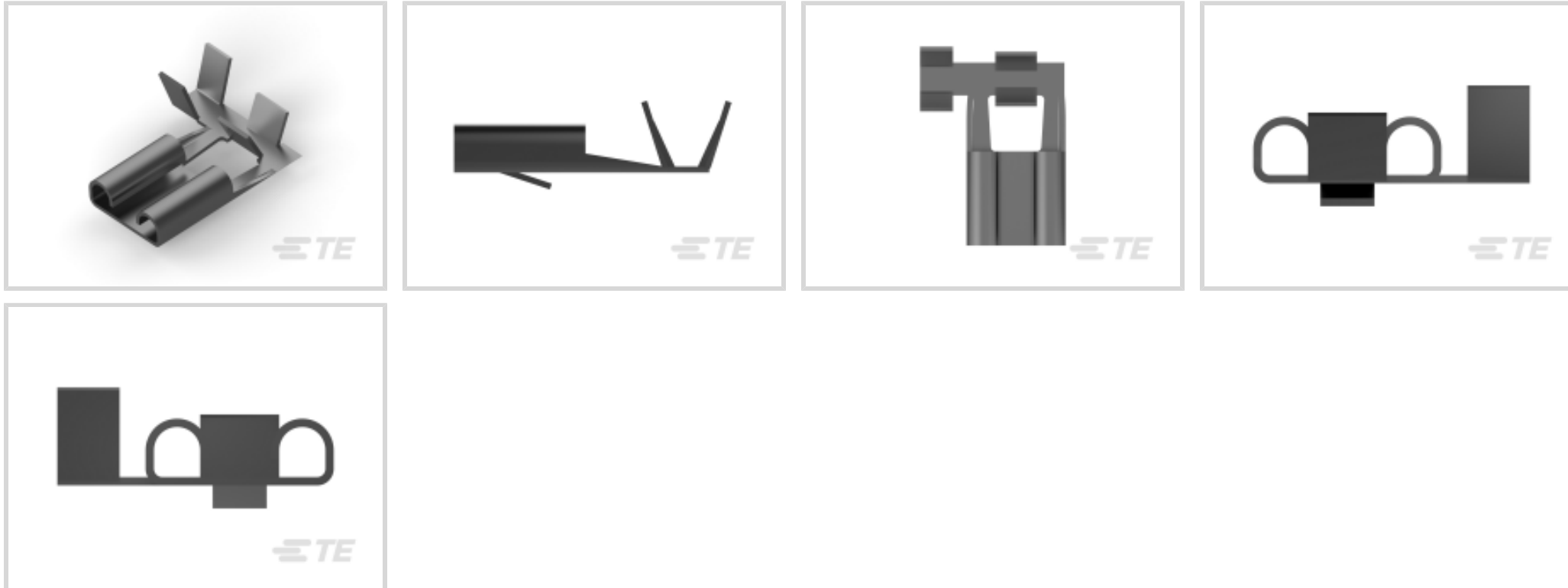




Terminals & Splices > Quick Disconnects



Quick Disconnect Terminal Type: **Receptacle**

Wire Size: 1.03 – 2.62 mm²

Mating Tab Width: 7.92 mm [.312 in]

Mating Tab Thickness: .81 mm [.032 in]

Features

Industry Standards

UL Flammability Rating	UL 94V-2
------------------------	----------

Termination Features

Product Terminates To	Wire & Cable
-----------------------	--------------

Configuration Features

Compatible With Wire & Cable Type	Discrete Wire
Connection Capacity	Single

Electrical Characteristics

Voltage Rating	250 V
----------------	-------

Mechanical Attachment

Wire Insulation Support	With
Mating Retention Type	Locking Lance

Packaging Features

Packaging Quantity	3000
Packaging Method	Loose Piece/Carton

Dimensions

Product Length	18.5 mm[.728 in]
Compatible Insulation Diameter Range	2.5 – 3.81 mm[.098 – .15 in]
Terminal Material Thickness	.41 mm[.016 in]
Wire Size	1.03 – 2.62 mm ²

Product Type Features

Insertion Force	Normal
-----------------	--------

Contact Features

Quick Disconnect Terminal Type	Receptacle
Mating Tab Width	7.92 mm[.312 in]
Mating Tab Thickness	.81 mm[.032 in]
Terminal Orientation	Flag
Contact Base Material	Phosphor Bronze
Terminal Plating Material	Tin
Crimp Type	F-Crimp
Barrel Type	Open

Usage Conditions

Insulation Option	Uninsulated
Operating Temperature Range	-40 – 110 °C[-40 – 230 °F]

Other

EU RoHS Compliance	Compliant
EU ELV Compliance	Compliant

Product Compliance

[For compliance documentation, visit the product page on TE.com>](#)

EU RoHS Directive 2011/65/EU	Compliant
EU ELV Directive 2000/53/EC	Compliant
China RoHS 2 Directive MIIT Order No 32, 2016	No Restricted Materials Above Threshold
EU REACH Regulation (EC) No. 1907/2006	Current ECHA Candidate List: JUNE 2024 (241) Candidate List Declared Against: JUNE 2024 (241) Does not contain REACH SVHC
Halogen Content	Low Halogen - Br, Cl, F, I < 900 ppm per homogenous material. Also BFR/CFR/PVC Free

Solder Process Capability

Not applicable for solder process capability

Product Compliance Disclaimer

This information is provided based on reasonable inquiry of our suppliers and represents our current actual knowledge based on the information they provided. This information is subject to change. The part numbers that TE has identified as EU RoHS compliant have a maximum concentration of 0.1% by weight in homogenous materials for lead, hexavalent chromium, mercury, PBB, PBDE, DBP, BBP, DEHP, DIBP, and 0.01% for cadmium, or qualify for an exemption to these limits as defined in the Annexes of Directive 2011/65/EU (RoHS2). Finished electrical and electronic equipment products will be CE marked as required by Directive 2011/65/EU. Components may not be CE marked. Additionally, the part numbers that TE has identified as EU ELV compliant have a maximum concentration of 0.1% by weight in homogenous materials for lead, hexavalent chromium, and mercury, and 0.01% for cadmium, or qualify for an exemption to these limits as defined in the Annexes of Directive 2000/53/EC (ELV). Regarding the REACH Regulation, the information TE provides on SVHC in articles for this part number is based on the latest European Chemicals Agency (ECHA) 'Guidance on requirements for substances in articles' posted at this URL: <https://echa.europa.eu/guidance-documents/guidance-on-reach>

Compatible Parts



TE Part # 2151089-2
OCEAN_2.0_Applicator-S-120F180OV-SSA



TE Part # 170191-1
FF 312 REC 18-14AWG BR REREELING



TE Part # 7-2151089-7
OCEAN_2.0_SPARE_PART_KIT-120F180OV



TE Part # 280315-2
FF 312 REC 2.5-4MM2 PB SILVER PLATED



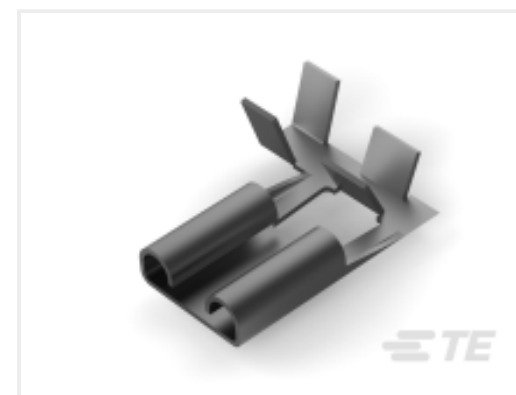
TE Part # 180398-5
FF 250 REC 1-2.5MM2 TPPB



TE Part # 880681-4
.312 SERIES FASTIN-

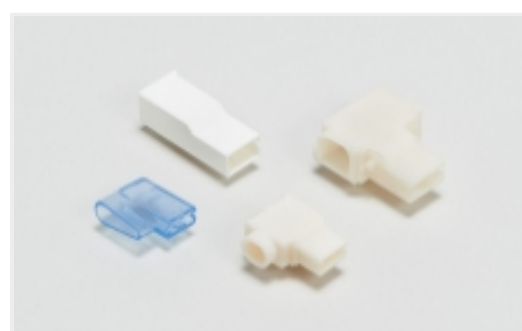


TE Part # 2151089-1
OCEAN_2.0_Applicator-S-120F180OV-SSM



TE Part # 180373-2
FF 312 REC 1-2.5MM2 TPBR

Also in the Series | FASTIN-FASTON 312



Crimp Terminal Housings(12)



Quick Disconnects(9)

Customers Also Bought



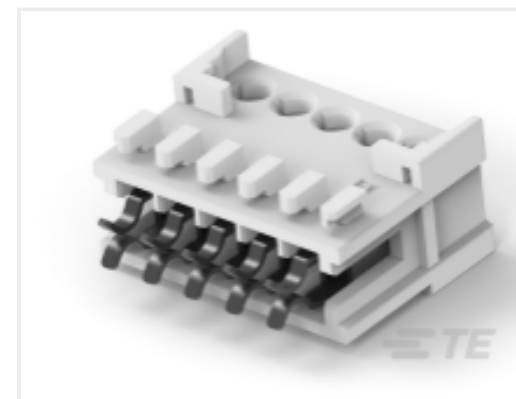
TE Part #CAT-T4827-CH8172
Timer Connector Housing



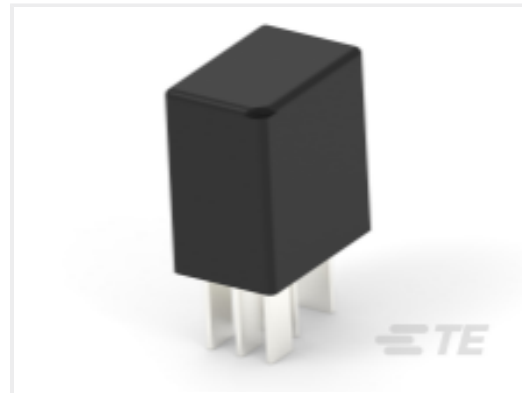
TE Part #1011-260-0305
BKSHL, 3P, BLK, PLG,RA,SR,NW6/7.5
/8.5/10



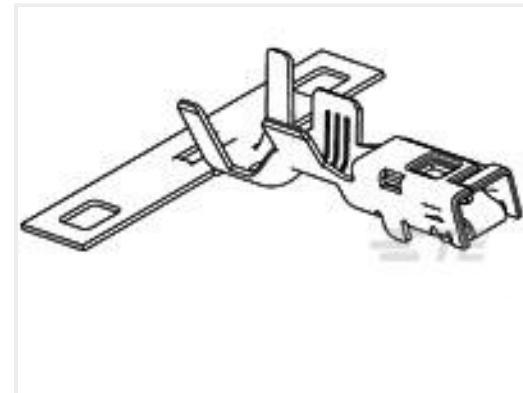
TE Part #2292800-1
AS16,PLUG BACKSHELL KIT,ST,06P,
SMOOTH



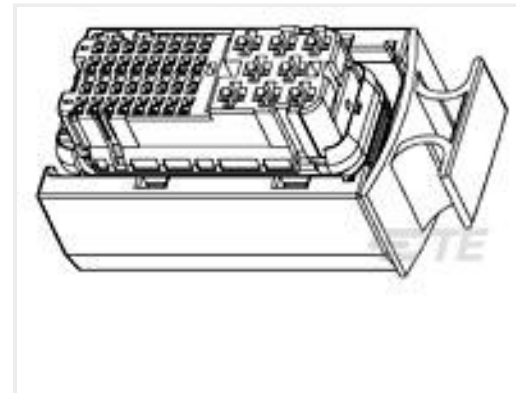
TE Part #1-2232892-5
5P MONOPLUG 2.5



TE Part #2359393-1
V23074A2002A402-EV-CBOX



TE Part #1326032-6
2.8MM RECP,SEAL,12AWG



TE Part #368383-1
40P REC HSG ASSY() BLK



TE Part #4-100103-0
40P.A/L.STRAIN REL.

Documents

Product Drawings

[FF 312 REC 1-2.5MM2 TPPB](#)

English

CAD Files

Customer View Model

[ENG_CVM_CVM_180453-6_AW.2d_dxf.zip](#)

English

3D PDF

3D

Customer View Model

[ENG_CVM_CVM_180453-6_AW.3d_igs.zip](#)

English

Customer View Model

[ENG_CVM_CVM_180453-6_AW.3d_stp.zip](#)

English

By downloading the CAD file I accept and agree to the [Terms and Conditions](#) of use.

Product Specifications

[Application Specification](#)

English