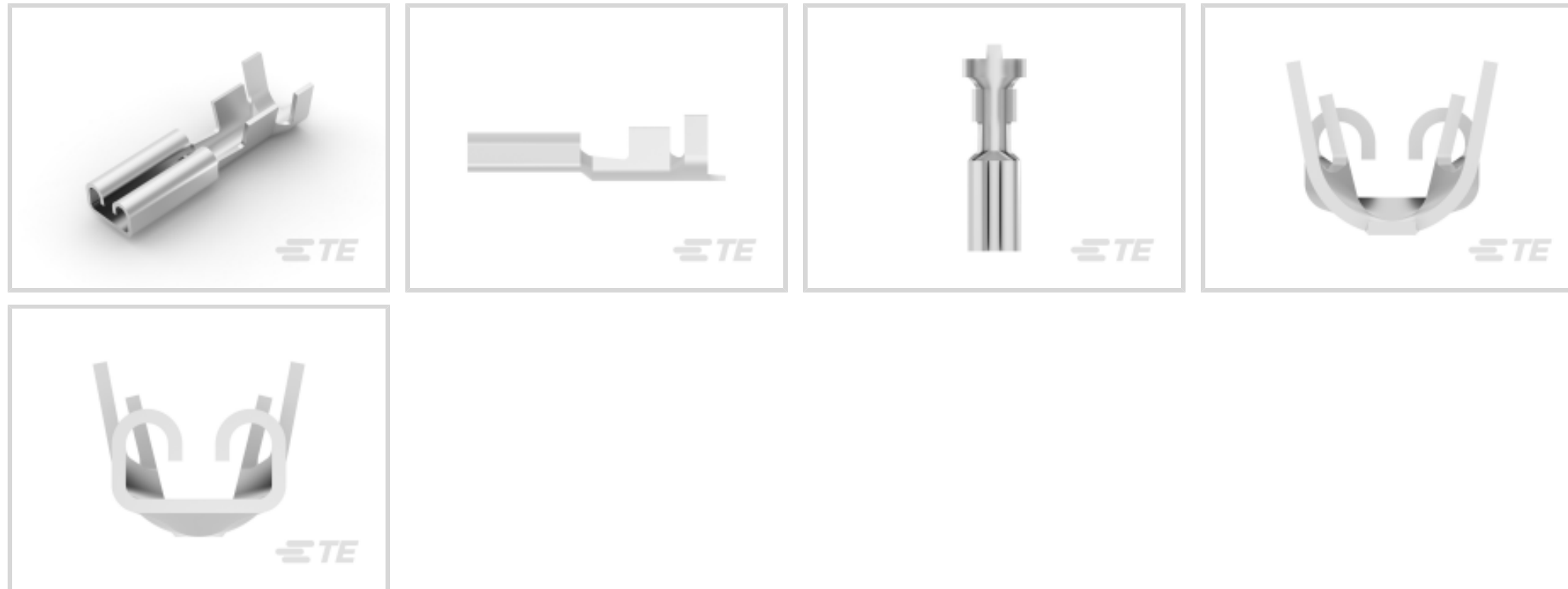




Terminals & Splices > Quick Disconnects



Quick Disconnect Terminal Type: **Receptacle**

Wire Size: .51 – 1.65 mm<sup>2</sup>

Mating Tab Width: 2.8 mm [.11 in]

Mating Tab Thickness: .81 mm [.032 in]

### Features

#### Industry Standards

Compatible With Agency/Standards Products	UL
---	----

#### Termination Features

Product Terminates To	Wire & Cable
-----------------------	--------------

#### Configuration Features

Compatible With Wire & Cable Type	Discrete Wire
Connection Capacity	Single

#### Mechanical Attachment

Wire Insulation Support	With
Mating Retention Type	Dimple
Extraction Force	6.1 kgf

#### Other

Line	FASTON .110
EU RoHS Compliance	Compliant
EU ELV Compliance	Compliant



### Packaging Features

Packaging Quantity	500
Packaging Method	Loose Piece/Carton

### Dimensions

Product Length	13.5 mm[.531 in]
Compatible Insulation Diameter Range	1.5 – 2.8 mm[.059 – .11 in]
Terminal Material Thickness	.3 mm[.012 in]
Wire Size	.51 – 1.65 mm <sup>2</sup>

### Contact Features

Quick Disconnect Terminal Type	Receptacle
Mating Tab Width	2.8 mm[.11 in]
Mating Tab Thickness	.81 mm[.032 in]
Terminal Orientation	Straight
Contact Base Material	Brass
Terminal Plating Material	Tin
Crimp Type	F-Crimp
Barrel Type	Open

### Usage Conditions

Insulation Option	Uninsulated
Operating Temperature Range	-40 – 110 °C[-40 – 230 °F]

### Product Compliance

[For compliance documentation, visit the product page on TE.com>](#)

EU RoHS Directive 2011/65/EU	Compliant
EU ELV Directive 2000/53/EC	Compliant
China RoHS 2 Directive MIIT Order No 32, 2016	No Restricted Materials Above Threshold
EU REACH Regulation (EC) No. 1907/2006	Current ECHA Candidate List: JUNE 2024 (241) Candidate List Declared Against: JUNE 2024 (241) Does not contain REACH SVHC
Halogen Content	Low Halogen - Br, Cl, F, I < 900 ppm per homogenous material. Also BFR/CFR/PVC Free
Solder Process Capability	Not applicable for solder process capability



Product Compliance Disclaimer

This information is provided based on reasonable inquiry of our suppliers and represents our current actual knowledge based on the information they provided. This information is subject to change. The part numbers that TE has identified as EU RoHS compliant have a maximum concentration of 0.1% by weight in homogenous materials for lead, hexavalent chromium, mercury, PBB, PBDE, DBP, BBP, DEHP, DIBP, and 0.01% for cadmium, or qualify for an exemption to these limits as defined in the Annexes of Directive 2011/65/EU (RoHS2). Finished electrical and electronic equipment products will be CE marked as required by Directive 2011/65/EU. Components may not be CE marked. Additionally, the part numbers that TE has identified as EU ELV compliant have a maximum concentration of 0.1% by weight in homogenous materials for lead, hexavalent chromium, and mercury, and 0.01% for cadmium, or qualify for an exemption to these limits as defined in the Annexes of Directive 2000/53/EC (ELV). Regarding the REACH Regulation, the information TE provides on SVHC in articles for this part number is based on the latest European Chemicals Agency (ECHA) 'Guidance on requirements for substances in articles' posted at this URL: <https://echa.europa.eu/guidance-documents/guidance-on-reach>

Compatible Parts

TE Part # 170141-2  
187 FASTON,FLAG,REC.,20-16 AWG, TPBR

TE Part # 160668-2  
110 FASTIN FASTON,REC.,20-16 AWG, PTBR

TE Part # 180441-2  
110 FASTON,REC.,20-16 AWG,TPBR

Also in the Series | **FASTON 110**

Crimp Terminal Housings(13)

Insertion & Extraction Tools(1)

PCB Terminals(22)

Quick Disconnects(168)

Customers Also Bought

TE Part #6-2176369-0  
RQ 0603 165R 0.1% 10PPM 5K RL

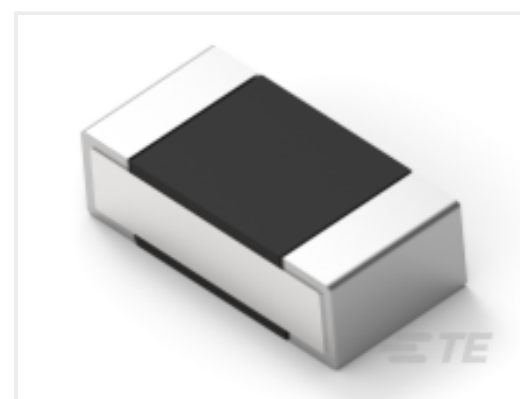
TE Part #55654-1  
TERMINAL R 90 DEG PG 8 10

TE Part #696020-1  
TERM PIDG R 12-10 6 90DEG

TE Part #DTM06-12SA-EE04  
PLG, 12P, BLK, N, HIGH TEMP, A



TE Part #2-1630186-3  
HSA50 50R 5%



TE Part #8-2176307-4  
RP 1E 0.1W 90K9 0.1% 25PPM 5K RL



TE Part #CONREVSMA007-G  
RP-SMA Plug 50 Ohm Cable Crimp



TE Part #1062-20-0377  
SOC, SF, SIZE 20, 16-22, SLEEVLESS, SN /SN



TE Part #2154828-3  
Cable Assembly EPII 4 Pos



TE Part #D96705-000  
44A0221-16-9/9CS3030

## Documents

### Product Drawings

110 FASTON,REC.,20-16 AWG,TPBR

English

### CAD Files

3D PDF

3D

Customer View Model

[ENG\\_CVM\\_CVM\\_180439-2\\_F.2d\\_dxf.zip](#)

English

Customer View Model

[ENG\\_CVM\\_CVM\\_180439-2\\_F.3d\\_igs.zip](#)

English

Customer View Model

[ENG\\_CVM\\_CVM\\_180439-2\\_F.3d\\_stp.zip](#)

English

By downloading the CAD file I accept and agree to the [Terms and Conditions](#) of use.

### Product Specifications

[Application Specification](#)

English