



Sigma | Sigma 3650

TE Internal #: 1624112-8

High Frequency Inductor, 0603, .068 μ H, 600 mA, .34 ohm DC Resistance, 5 %, Surface Mount, Taped & Reeled, 1.8 mm [.07 in] Length, Sigma 3650

[View on TE.com >](#)

Passive Components > Inductors > High Frequency & RF Inductors



Inductor Type: **High Frequency**

Package Size Code: **0603**

Inductance: **.068 μ H**

Current Rating (Max): **600 mA**

DC Resistance: **.34 Ω**

Features

Usage Conditions

Operating Temperature Range	-40 – 125 °C
-----------------------------	--------------

Electrical Characteristics

Self Resonant Frequency	1.7 GHz
Inductance	.068 μ H
Current Rating (Max)	600 mA
DC Resistance	.34 Ω
Passive Component Tolerance	5 %

Product Type Features

Inductor Type	High Frequency
Package Size Code	0603
Element Type	Wire Wound

Termination Features

Termination Method to PCB	Surface Mount
---------------------------	---------------

Dimensions

Product Length	1.8 mm [.07 in]
Product Width	1.12 mm [.044 in]
Product Height	1.02 mm [.04 in]

Packaging Features



Packaging Method	Taped & Reeled
------------------	----------------

Other

Inductor Quality Factor	37
EU RoHS Compliance	Compliant
EU ELV Compliance	Compliant

Product Compliance

[For compliance documentation, visit the product page on TE.com>](#)

EU RoHS Directive 2011/65/EU	Compliant
EU ELV Directive 2000/53/EC	Compliant
China RoHS 2 Directive MIIT Order No 32, 2016	No Restricted Materials Above Threshold
EU REACH Regulation (EC) No. 1907/2006	Current ECHA Candidate List: JUNE 2024 (241) Candidate List Declared Against: JUNE 2024 (241) Does not contain REACH SVHC
Halogen Content	Low Halogen - Br, Cl, F, I < 900 ppm per homogenous material. Also BFR/CFR/PVC Free
Solder Process Capability	Reflow solder capable to 260°C

Product Compliance Disclaimer

This information is provided based on reasonable inquiry of our suppliers and represents our current actual knowledge based on the information they provided. This information is subject to change. The part numbers that TE has identified as EU RoHS compliant have a maximum concentration of 0.1% by weight in homogenous materials for lead, hexavalent chromium, mercury, PBB, PBDE, DBP, BBP, DEHP, DIBP, and 0.01% for cadmium, or qualify for an exemption to these limits as defined in the Annexes of Directive 2011/65/EU (RoHS2). Finished electrical and electronic equipment products will be CE marked as required by Directive 2011/65/EU. Components may not be CE marked. Additionally, the part numbers that TE has identified as EU ELV compliant have a maximum concentration of 0.1% by weight in homogenous materials for lead, hexavalent chromium, and mercury, and 0.01% for cadmium, or qualify for an exemption to these limits as defined in the Annexes of Directive 2000/53/EC (ELV). Regarding the REACH Regulation, the information TE provides on SVHC in articles for this part number is based on the latest European Chemicals Agency (ECHA) 'Guidance on requirements for substances in articles' posted at this URL: <https://echa.europa.eu/guidance-documents/guidance-on-reach>

Compatible Parts




TE Part # 3-1879023-5
3650 1008 0.91 μ H 5% 2K RL



TE Part # 3-1879023-1
3650 1008 0.62 μ H 5% 2K RL



TE Part # 3-1879023-4
3650 1008 0.82 μ H 5% 2K RL



TE Part # 1624113-4
3650 0805 47nH 10% 2K RL



TE Part # 1879812-4
3650 0603 0.18 μ H 2% 2K RL



TE Part # 1879812-3
3650 0603 27nH 2% 2K RL



TE Part # 1879812-7
3650 0603 0.47 μ H 2% 2K RL



TE Part # 4-1624112-1
3650 0402 9.5nH 5% 2K RL



TE Part # 9-1624112-8
3650 0603 5.1nH 2% 2K RL



TE Part # 1624113-9
3650 0805 0.22 μ H 10% 2K RL



TE Part # 1624112-2
3650 0603 12nH 5% 2K RL



TE Part # 1624113-2
3650 0805 22nH 10% 2K RL



TE Part # 1-1879023-3
3650 1008 62nH 5% 2K RL



TE Part # 1624113-6
3650 0805 0.1 μ H 10% 2K RL



TE Part # 1879812-5
3650 0603 10nH 2% 2K RL



TE Part # 7-1624112-8
3650 0603 23nH 5% 2K RL



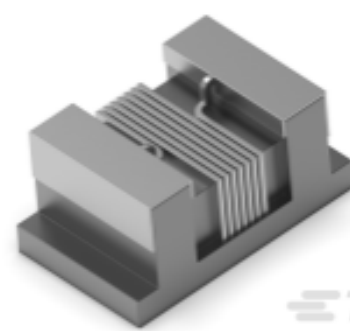
TE Part # 4-1624112-6
3650 0402 19nH 5% 2K RL



TE Part # 1879812-6
3650 0603 6.2nH 2% 2K RL

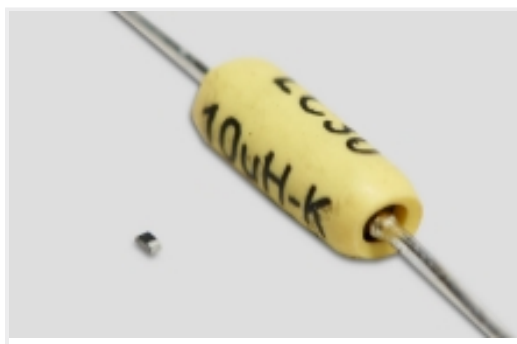


TE Part # 9-1624112-4
3650 0603 0.39 μ H 5% 2K RL



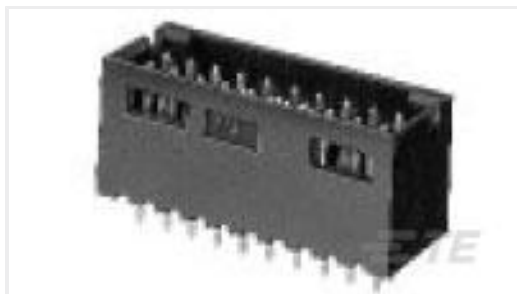
TE Part # 8-1624113-0
3650 0603 0.16 μ H 5% 2K RL

Also in the Series | [Sigma 3650](#)



High Frequency & RF Inductors(226)

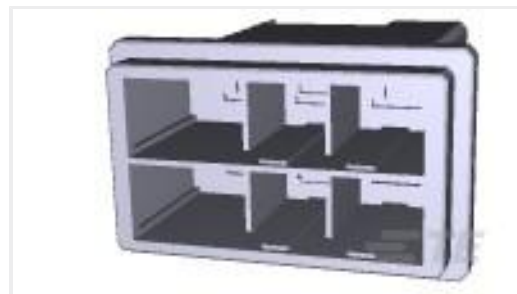
Customers Also Bought



TE Part #5-102618-2
08 MODII HDR DRST SHRD .100CL



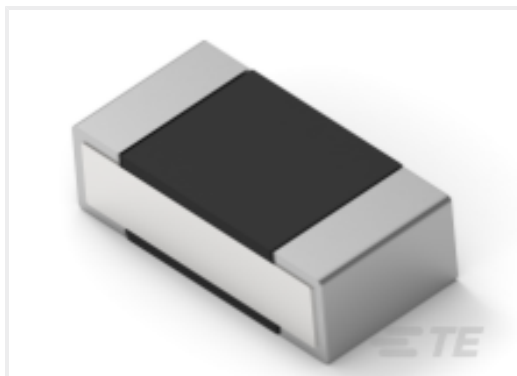
TE Part #8-1879223-3
CPF 0603 1K96 0.1% 25PPM 1K RL



TE Part #2-917808-3
DYNAMIC D-5200M TAB HSG 6P Y-Y



TE Part #2-1879208-8
CPF 0402 130R 0.1% 25PPM 1K RL



TE Part #4-2176311-1
RP 1E 0.1W 3K01 0.1% 25PPM 1K RL



TE Part #826632-8
8P AMPMODU II PIN HDR.



TE Part #1625812-1
3631B 10UH 20% FIO



TE Part #7-1879215-4
CPF 0402 26K7 0.1% 25PPM 1K RL



TE Part #1-338068-2
MICRO-MATCH FTE,12P



TE Part #7-1676966-3
SMW2 100R 5%

Documents

Product Drawings

[3650 0603 68nH 5% 2K RL](#)

English

CAD Files

[3D PDF](#)

3D

Customer View Model

[ENG_CVM_CVM_1624112-8_BA.2d_dxf.zip](#)

36501J68NJTDG

High Frequency Inductor, 0603, .068 μ H, 600 mA, .34 ohm DC Resistance, 5 %, Surface Mount, Taped & Reeled, 1.8 mm [.07 in] Length, Sigma 3650



English

Customer View Model

[ENG_CVM_CVM_1624112-8_BA.3d_igs.zip](#)

English

Customer View Model

[ENG_CVM_CVM_1624112-8_BA.3d_stp.zip](#)

English

By downloading the CAD file I accept and agree to the [Terms and Conditions](#) of use.

Datasheets & Catalog Pages

[1309350_PASSIVE_COMPONENT](#)

English

[Low Inductance, High Frequency Chip Inductors - Type 3650 Series](#)

English