

1571983-3 ✓ ACTIVE

Alcoswitch | Alcoswitch DIP, Alcoswitch DIP GDH

TE Internal #: 1571983-3

DIP Switch, Gold Contact Plating, Black, Polyphenylene Sulfide (PPS), Sealed, 2 Switch, -30 – 85 °C, Recessed Rocker, Alcoswitch DIP

[View on TE.com >](#)



Switches > DIP & SIP Switches



DIP & SIP Switch Type: **DIP**

Switch Contact Plating Material: **Gold**

Case Color: **Black**

Case Material: **Polyphenylene Sulfide (PPS)**

Sealed Device: **Yes**

Features

Industry Standards

UL Flammability Rating	UL 94V-0
------------------------	----------

Dimensions

Product Length	3.66 mm[.144 in]
Product Height	2.21 mm[.087 in]

Packaging Features

Packaging Method	Tape & Reel
Packaging Quantity	2000

Housing Features

Low Profile	Yes
Centerline (Pitch)	1.27 mm[.05 in]

Configuration Features

Number of Positions	2
Number of Switches	2
Configuration (Pole-Throw)	Single Pole - Single Throw

Body Features

Sealing Method	Sealing Tape
Case Color	Black
Case Material	Polyphenylene Sulfide (PPS)



Contact Features

Contact Underplating Material	Nickel
PCB Contact Termination Area Plating Material	Gold
Switch Contact Plating Material	Gold
Contact Base Material	Copper Alloy

Product Type Features

Leg Style	Gull Wing
DIP & SIP Switch Type	DIP
Sealed Device	Yes
Actuator Style	Recessed Rocker

Usage Conditions

Operating Temperature Range	-30 – 85 °C
-----------------------------	-------------

Electrical Characteristics

Contact Current Rating	.1 A
Operating Voltage	50 VDC

Termination Features

Termination Method to PCB	Surface Mount
---------------------------	---------------

Other

EU RoHS Compliance	Compliant
EU ELV Compliance	Compliant

Product Compliance

[For compliance documentation, visit the product page on TE.com>](#)

EU RoHS Directive 2011/65/EU	Compliant
EU ELV Directive 2000/53/EC	Compliant
China RoHS 2 Directive MIIT Order No 32, 2016	No Restricted Materials Above Threshold
EU REACH Regulation (EC) No. 1907/2006	Current ECHA Candidate List: JUNE 2024 (241) Candidate List Declared Against: JUNE 2024 (241) Does not contain REACH SVHC
Halogen Content	Low Halogen - Br, Cl, F, I < 900 ppm per homogenous material. Also BFR/CFR/PVC Free


Solder Process Capability

Reflow solder capable to 260°C

Product Compliance Disclaimer

This information is provided based on reasonable inquiry of our suppliers and represents our current actual knowledge based on the information they provided. This information is subject to change. The part numbers that TE has identified as EU RoHS compliant have a maximum concentration of 0.1% by weight in homogenous materials for lead, hexavalent chromium, mercury, PBB, PBDE, DBP, BBP, DEHP, DIBP, and 0.01% for cadmium, or qualify for an exemption to these limits as defined in the Annexes of Directive 2011/65/EU (RoHS2). Finished electrical and electronic equipment products will be CE marked as required by Directive 2011/65/EU. Components may not be CE marked. Additionally, the part numbers that TE has identified as EU ELV compliant have a maximum concentration of 0.1% by weight in homogenous materials for lead, hexavalent chromium, and mercury, and 0.01% for cadmium, or qualify for an exemption to these limits as defined in the Annexes of Directive 2000/53/EC (ELV). Regarding the REACH Regulation, the information TE provides on SVHC in articles for this part number is based on the latest European Chemicals Agency (ECHA) 'Guidance on requirements for substances in articles' posted at this URL: <https://echa.europa.eu/guidance-documents/guidance-on-reach>

Compatible Parts



TE Part # 1977830-1
DIP SWITCH GDH02SA04



TE Part # 1571983-4
GDH04S04=DIP SWITCH



TE Part # 1571983-5
GDH04STR04=DIP SWITCH



TE Part # 1-1571983-1
GDH08STR04=DIP SWITCH



TE Part # 1977830-4
DIP SWITCH GDH08SA04

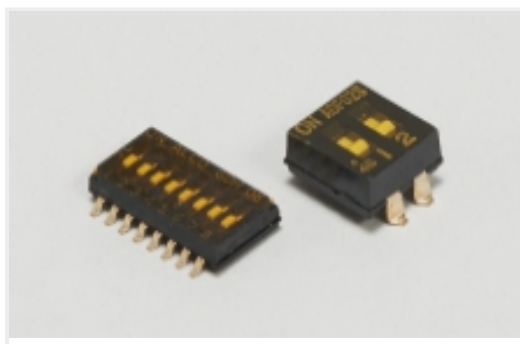
TE Part # 1-1571983-5
GDH02STRON04=DIP SWITCH

Also in the Series | Alcoswitch DIP GDH



DIP & SIP Switches(160)

Also in the Series | Alcoswitch DIP



DIP & SIP Switches(160)



Rotary Switches(16)

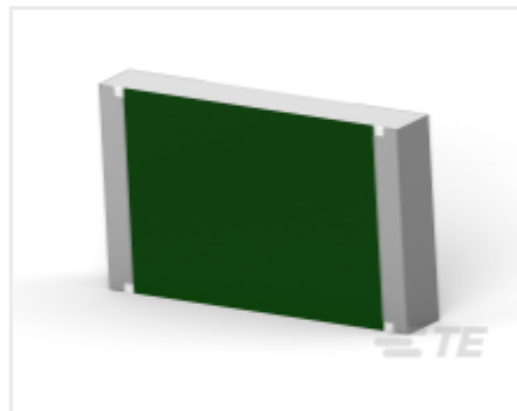
Customers Also Bought



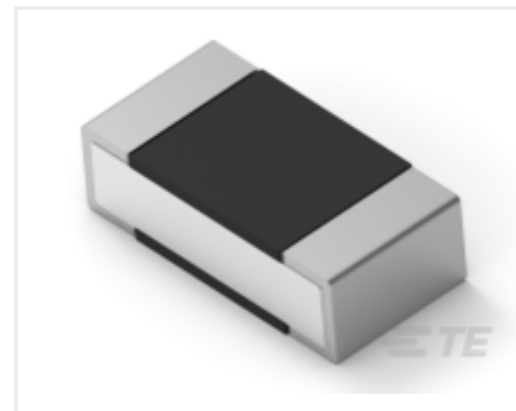
TE Part #1-406525-2
IMJ,NO SHLD,8P,PCK&PLC TRAY,SN



TE Part #1879233-7
SMW5 R18 5%



TE Part #2-2176401-6
3540 150K 1%



TE Part #2-2176312-6
RP 1E 0.1W 22K6 0.1% 25PPM 1K RL



TE Part #1571220-1
SWITCH,TACT,12X12,SEALED



TE Part #6-2176311-9
RP 1E 0.1W 5K9 0.1% 25PPM 1K RL



TE Part #2081362-1
SMA,RECEPTACLE,12.4GHZ,RIGHT ANGLE,PCB



TE Part #1-2176363-5
RQ 0402 604R 0.1% 10PPM 5K RL



TE Part #5745392-2
HD-20 RCPT 25P RA 318 THD INS



TE Part #3-2319847-7
END STACK DIP 6P J RAISED T&R

Documents

Product Drawings

[GDH02STR04=DIP SWITCH](#)

English

CAD Files

Customer View Model

[ENG_CVM_1571983-3_B.2d_dxf.zip](#)

English

Customer View Model



[ENG_CVM_1571983-3_B.3d_igs.zip](#)

English

Customer View Model

[ENG_CVM_1571983-3_B.3d_stp.zip](#)

English

3D PDF

English

Customer View Model

[ENG_CVM_CVM_1571983-3_C.3d_igs.zip](#)

English

Customer View Model

[ENG_CVM_CVM_1571983-3_C.3d_stp.zip](#)

English

Customer View Model

[ENG_CVM_CVM_1571983-3_C.2d_dxf.zip](#)

English

3D PDF

3D

By downloading the CAD file I accept and agree to the [Terms and Conditions](#) of use.

Datasheets & Catalog Pages

[SWITCHES_CORE_PROGRAM_CATALOG](#)

English