

140660 ✓ ACTIVE

FASTON | FASTON 250

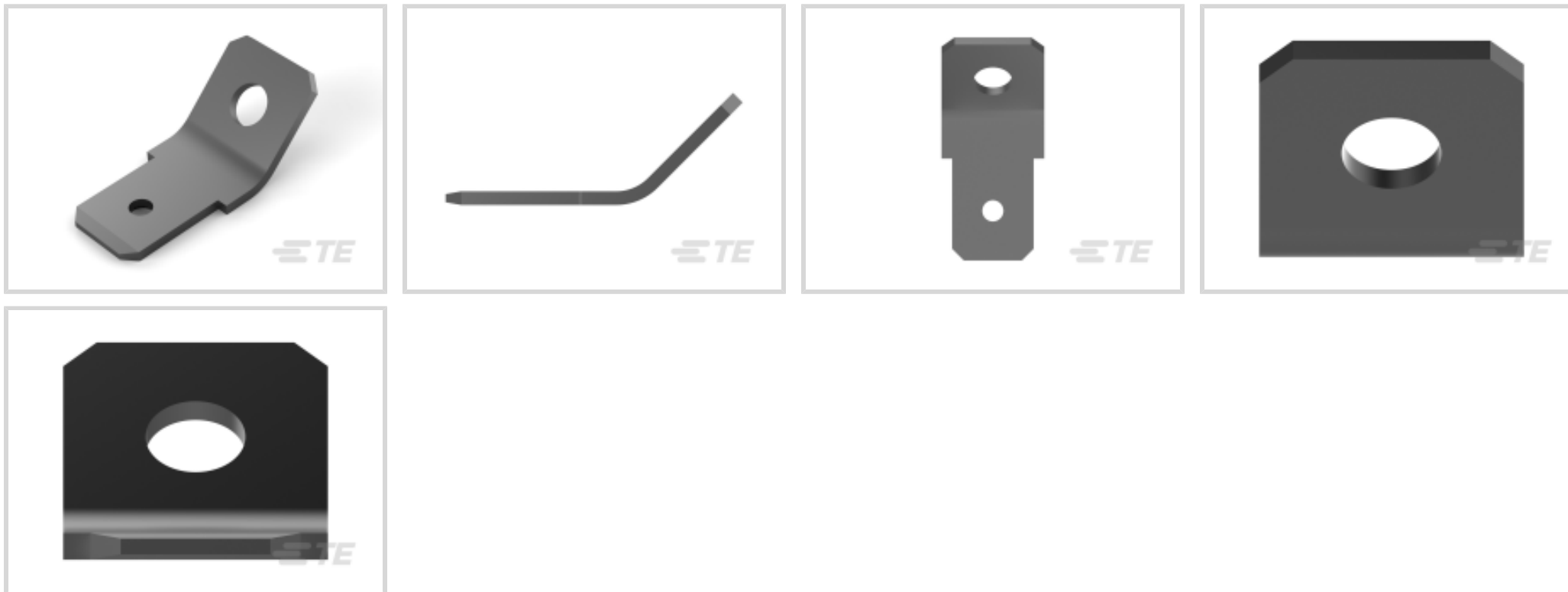
TE Internal #: 140660

Tab, 6.35 mm [.25 in] Tab Width, 4.1 mm [.16 in] PCB Hole, Through Hole - Screw, Tin Plating, Box, FASTON 250, PCB Terminals

[View on TE.com >](#)



Terminals & Splices > PCB Terminals



PCB Terminal Type: **Tab**

Mating Tab Width: **6.35 mm [.25 in]**

Mating Tab Thickness: **.8 mm [.031 in]**

PCB Hole Diameter: **4.1 mm [.16 in]**

Termination Method to PCB: **Through Hole - Screw**

## Features

### Product Type Features

Terminal Features	Stud Hole
-------------------	-----------

### Usage Conditions

Insulation Option	Uninsulated
Operating Temperature Range	-30 – 110 °C[-22 – 230 °F]

### Packaging Features

Packaging Quantity	5000
Packaging Method	Box

### Dimensions

Stud Diameter	3 mm[.118 in]
PCB Hole Diameter	4.1 mm[.16 in]

### Contact Features

PCB Contact Termination Area Plating Material Thickness	2 µm[78.74 µin]
Contact Mating Area Plating Material Thickness	2 µm[78.74 µin]
PCB Terminal Type	Tab



Mating Tab Width	6.35 mm [.25 in]
Mating Tab Thickness	.8 mm [.031 in]
Terminal Plating Material	Tin
Contact Underplating Material	Brass
Terminal Size	6.35
Terminal Orientation	45 Bend

### Termination Features

Termination Method to PCB	Through Hole - Screw
Product Terminates To	Printed Circuit Board

### Other

EU RoHS Compliance	Compliant
EU ELV Compliance	Compliant

### Product Compliance

[For compliance documentation, visit the product page on TE.com>](#)

EU RoHS Directive 2011/65/EU	Compliant
EU ELV Directive 2000/53/EC	Compliant
China RoHS 2 Directive MIIT Order No 32, 2016	No Restricted Materials Above Threshold
EU REACH Regulation (EC) No. 1907/2006	Current ECHA Candidate List: JUNE 2024 (241) Candidate List Declared Against: JUNE 2024 (241) Does not contain REACH SVHC
Halogen Content	Low Halogen - Br, Cl, F, I < 900 ppm per homogenous material. Also BFR/CFR/PVC Free
Solder Process Capability	Not applicable for solder process capability

#### Product Compliance Disclaimer

This information is provided based on reasonable inquiry of our suppliers and represents our current actual knowledge based on the information they provided. This information is subject to change. The part numbers that TE has identified as EU RoHS compliant have a maximum concentration of 0.1% by weight in homogenous materials for lead, hexavalent chromium, mercury, PBB, PBDE, DBP, BBP, DEHP, DIBP, and 0.01% for cadmium, or qualify for an exemption to these limits as defined in the Annexes of Directive 2011/65/EU (RoHS2). Finished electrical and electronic equipment products will be CE marked as required by Directive 2011/65/EU. Components may not be CE marked. Additionally, the part numbers that TE has identified as EU ELV compliant have a maximum concentration of 0.1% by weight in homogenous materials for lead, hexavalent chromium, and mercury, and 0.01% for cadmium, or qualify for an exemption to these limits as defined in the Annexes of Directive 2000/53/EC (ELV). Regarding the REACH Regulation, the information TE provides on SVHC in articles for this part number is based on the latest European Chemicals Agency (ECHA) 'Guidance on requirements for substances in articles' posted at this URL: <https://echa.europa.eu/guidance-documents/guidance-on-reach>

## Compatible Parts



TE Part # 140734-1  
250 FASTON,TAB,BR



TE Part # 140597  
250 FASTON,TAB,BR



TE Part # 42822-4  
250 FASTON TAB TPBR



TE Part # 142241-2  
250 FASTON,TAB,TPBR



TE Part # 42822-2  
250 FASTON TAB TPBR



TE Part # 140665  
250 FASTON,TAB,BR



TE Part # 60465-2  
250 FASTON TAB TPBR

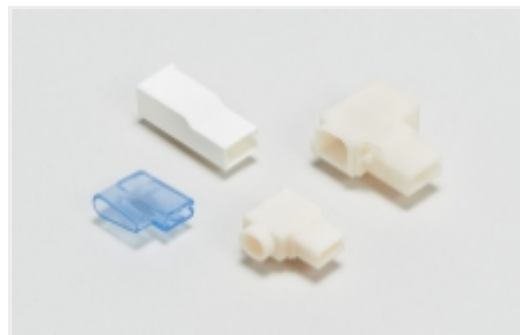


TE Part # 140598  
250 FASTON,TAB,TPBR

## Also in the Series | FASTON 250



Compression Connectors(4)



Crimp Terminal Housings(118)



Insertion & Extraction Tools(6)



Insulation Boots & Sleeves(16)



PCB Terminals(133)

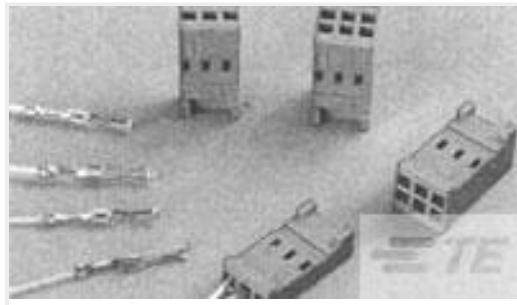


Quick Disconnects(425)



Splices(4)

## Customers Also Bought



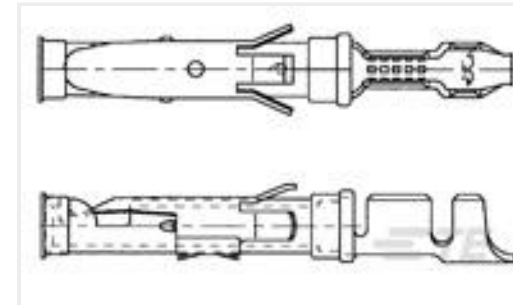
TE Part #188744-1  
CONTACT REC HE14 COSI TIN  
PLATED



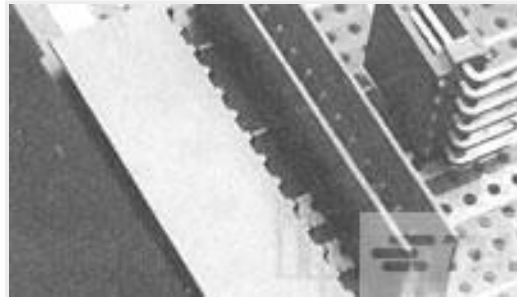
TE Part #3-640440-4  
04P MTA100 CONN ASSY 22AWG RED



TE Part #32947  
PG R 22-16 COMM 22-18 MIL 6



TE Part #1-163088-0  
SPEC. PLATED



TE Part #281698-8  
HEADER HE14 RA 8 P



TE Part #140598  
250 FASTON, TAB, TPBR



TE Part #CAT-AM74-H3401F  
HE13/HE14 Crimp Housings



TE Part #7-1393302-5  
V23134B0052C642-EV-CBOX

## Documents

### CAD Files

#### Customer View Model

[ENG\\_CVM\\_CVM\\_140660\\_S.2d\\_dxf.zip](#)

English

### 3D PDF

3D

#### Customer View Model

[ENG\\_CVM\\_CVM\\_140660\\_S.3d\\_igs.zip](#)

English

#### Customer View Model

[ENG\\_CVM\\_CVM\\_140660\\_S.3d\\_stp.zip](#)

English

By downloading the CAD file I accept and agree to the [Terms and Conditions](#) of use.