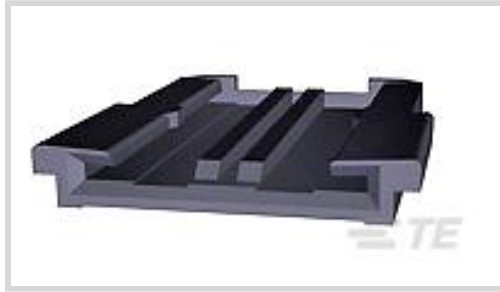




Automotive Parts > Automotive Connector Accessories > Automotive Connector Locks & Position Assurance



Primary Product Color: **Blue**
 Connector & Contact Retention Accessory Type: **Locking Device**
 Primary Product Material: **PBT GF30**

Features

Product Type Features

Sealable	No
Connector & Contact Retention Accessory Type	Locking Device

Body Features

Primary Product Color	Blue
Primary Product Material	PBT GF30

Industry Standards

UL Flammability Rating	UL 94HB
------------------------	---------

Packaging Features

Packaging Method	Bag
Packaging Quantity	10000

Other

Serviceable	Yes
-------------	-----

Product Compliance

[For compliance documentation, visit the product page on TE.com>](#)

EU RoHS Directive 2011/65/EU	Compliant
EU ELV Directive 2000/53/EC	Compliant
China RoHS 2 Directive MIIT Order No 32, 2016	No Restricted Materials Above Threshold
EU REACH Regulation (EC) No. 1907/2006	Current ECHA Candidate List: JUNE 2025 (250) Candidate List Declared Against: JAN 2025 (247) Does not contain REACH SVHC

Halogen Content BFR/CFR/PVC Free, but Br/Cl >900 ppm in other sources.

Solder Process Capability Not applicable for solder process capability

Product Compliance Disclaimer

This information is provided based on reasonable inquiry of our suppliers and represents our current actual knowledge based on the information they provided. This information is subject to change. The part numbers that TE has identified as EU RoHS compliant have a maximum concentration of 0.1% by weight in homogenous materials for lead, hexavalent chromium, mercury, PBB, PBDE, DBP, BBP, DEHP, DIBP, and 0.01% for cadmium, or qualify for an exemption to these limits as defined in the Annexes of Directive 2011/65/EU (RoHS2). Finished electrical and electronic equipment products will be CE marked as required by Directive 2011/65/EU. Components may not be CE marked. Additionally, the part numbers that TE has identified as EU ELV compliant have a maximum concentration of 0.1% by weight in homogenous materials for lead, hexavalent chromium, and mercury, and 0.01% for cadmium, or qualify for an exemption to these limits as defined in the Annexes of Directive 2000/53/EC (ELV). Regarding the REACH Regulation, the information TE provides on SVHC in articles for this part number is based on the latest European Chemicals Agency (ECHA) 'Guidance on requirements for substances in articles' posted at this URL: <https://echa.europa.eu/guidance-documents/guidance-on-reach>

Compatible Parts



TE Part # 1393374-2
V23540M1026Q501=MARKT MODULE C



TE Part # 1-1393387-8
V23540M1050Q570=BUCHSENGEH 50

Customers Also Bought



TE Part #2299987-3
65W PLUG ASSEMBLY



TE Part #1-2355506-1
2POS,MCON 1.2,REC HSG ASSY,SLD, COD A



TE Part #2-2355506-1
2POS,MCON 1.2,REC HSG ASSY,SLD, COD B



TE Part #1-2355507-1
3POS,MCON 1.2,REC HSG ASSY,SLD, COD A

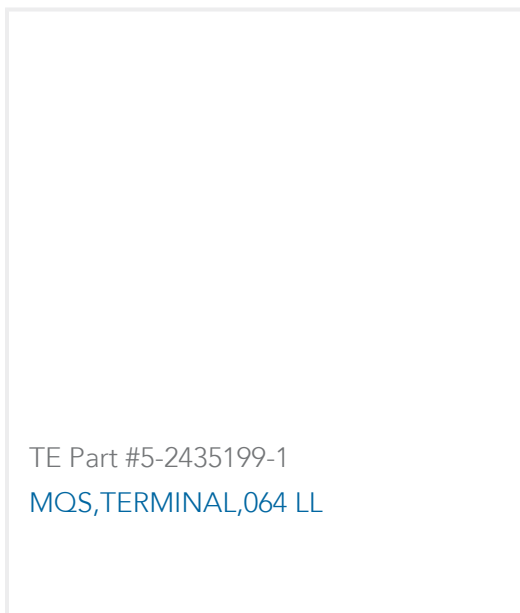


TE Part #2364137-1
52POS. MOS FEMALE,CONN KIT

TE Part #1-2434952-1
AMP MCP 2.8,TERMINAL

TE Part #1-2434953-1
AMP MCP 2.8,TERMINAL

TE Part #2435075-2
MT 2,TERMINAL,A REC 1.6 CONTACT SWS SN



Documents

Product Drawings

[V23540A1000Y452=VERSCHL.26P.](#)

English

[V23540A1000Y452=VERSCHL.26P.](#)

English

CAD Files

[3D PDF](#)

English

Customer View Model

[ENG_CVM_1393449-1_A2.3d_igs.zip](#)

English

Customer View Model

[ENG_CVM_1393449-1_A2.3d_stp.zip](#)

English

Customer View Model

[ENG_CVM_1393449-1_A2.2d_dxf.zip](#)

English

By downloading the CAD file I accept and agree to the [Terms and Conditions](#) of use.

Datasheets & Catalog Pages

[1393449-1-datasheet](#)

English