

130058 ✓ ACTIVE

SOLISTRAND

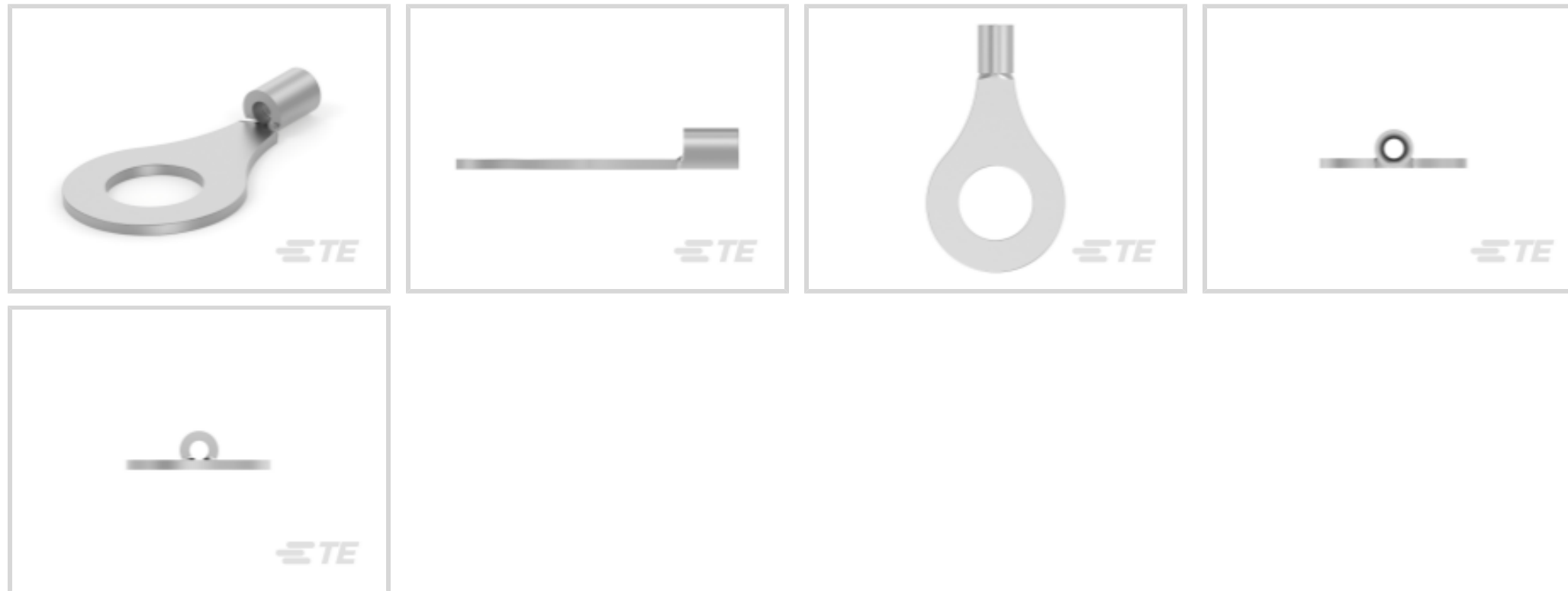
TE Internal #: 130058

Closed Ring Tongue Terminal, 22 – 16 AWG, M6 Stud, 6.3 mm [.248 in] Stud Diameter, Closed Barrel, Straight, Tin Plating, Uninsulated

[View on TE.com >](#)



Terminals & Splices > Ring Terminals



Ring Terminal Product Type: Closed Ring Tongue Terminal

Wire Size: 509 – 3260 CMA

Stud Size: M6

Features

Mechanical Attachment

Wire Insulation Support	Without
-------------------------	---------

Industry Standards

Government Qualified Terminal	No
-------------------------------	----

Packaging Features

Packaging Quantity	1000
--------------------	------

Packaging Method	Loose Piece
------------------	-------------

Product Type Features

Ring Terminal Product Type	Closed Ring Tongue Terminal
----------------------------	-----------------------------

Stud Size	M6
-----------	----

Sealable	No
----------	----

Wire Insulation Support Retention Type	Non-Insulation Support
--	------------------------

Contact Features

Barrel Type	Closed
-------------	--------

Terminal Orientation	Straight
----------------------	----------

Terminal Plating Material	Tin
---------------------------	-----

Dimensions

Wire Size	509 – 3260 CMA
Stud Diameter	6.3 mm[.248 in]
Tongue Thickness	.79 mm[.031 in]
Product Length	21.84 mm[.86 in]
Barrel Inside Diameter	1.55 mm[.061 in]

Usage Conditions

Insulation Option	Uninsulated
-------------------	-------------

Operation/Application

Compatible With Wire Base Material	Copper
Compatible With Wire Plating Material	Tin

Other

EU RoHS Compliance	Compliant
EU ELV Compliance	Compliant

Product Compliance

[For compliance documentation, visit the product page on TE.com>](#)

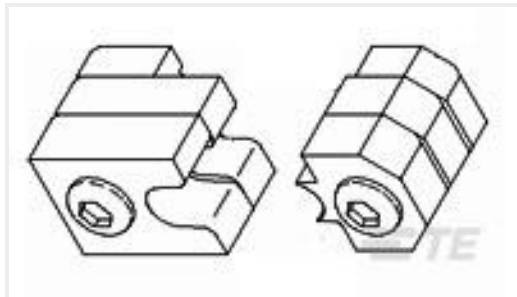
EU RoHS Directive 2011/65/EU	Compliant
EU ELV Directive 2000/53/EC	Compliant
China RoHS 2 Directive MIIT Order No 32, 2016	No Restricted Materials Above Threshold
EU REACH Regulation (EC) No. 1907/2006	Current ECHA Candidate List: JUNE 2024 (241) Candidate List Declared Against: JUNE 2024 (241) Does not contain REACH SVHC
Halogen Content	Low Halogen - Br, Cl, F, I < 900 ppm per homogenous material. Also BFR/CFR/PVC Free
Solder Process Capability	Not applicable for solder process capability

Product Compliance Disclaimer

This information is provided based on reasonable inquiry of our suppliers and represents our current actual knowledge based on the information they provided. This information is subject to change. The part numbers that TE has identified as EU RoHS compliant have a maximum concentration of 0.1% by weight in homogenous materials for lead, hexavalent chromium, mercury, PBB, PBDE, DBP, BBP, DEHP, DIBP, and 0.01% for cadmium, or qualify for an exemption to these limits as defined in the Annexes of Directive 2011/65/EU (RoHS2). Finished electrical and electronic equipment products will be CE marked as required by Directive 2011/65/EU. Components may not be CE marked. Additionally, the part numbers that TE has identified as EU ELV compliant have a maximum concentration of 0.1% by weight in homogenous materials for lead, hexavalent chromium, and mercury, and 0.01% for cadmium, or qualify for an exemption to these limits

as defined in the Annexes of Directive 2000/53/EC (ELV). Regarding the REACH Regulation, the information TE provides on SVHC in articles for this part number is based on the latest European Chemicals Agency (ECHA) 'Guidance on requirements for substances in articles' posted at this URL: <https://echa.europa.eu/guidance-documents/guidance-on-reach>

Compatible Parts



TE Part # 47812
DIES SOLIS 22-16 DIE SET



TE Part # 49935
DAHT SOLIS 22-10 ASSY



TE Part # 525693
DAHT SOLIS 22-10 ASSY



TE Part # 58545-1
SOLISTRAND 10-22 DIE ASSY



TE Part # 169400
CERTI-LOK FRAME W/O DIES

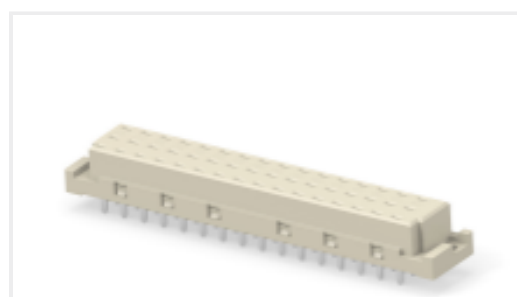
Customers Also Bought



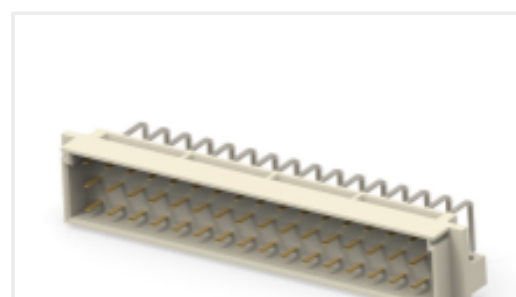
TE Part #1879208-5
CPF 0402 15R 0.1% 25PPM 1K RL



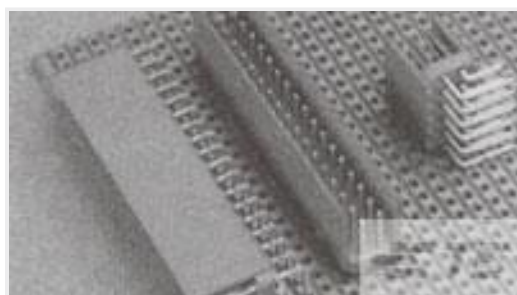
TE Part #160129
TERM,SOLIS R 4/0 M10



TE Part #354660-E
STVE 48 F ACE GGG 7-02 1206 4,5 * 247 E



TE Part #354871-E
STVE 48 M ACE GGG 4-00 1006 * * 137 E007



TE Part #1-281742-0
HEADER HE14 RA 2X10 P



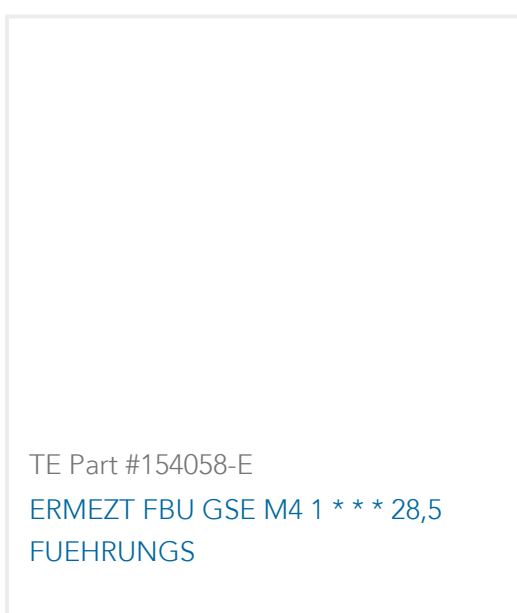
TE Part #2321926-4
RECEPTACLE HOUSING PANEL MOUNT 4PIN



TE Part #CAT-526SDL-SEALTP
Sealed Connector: TPAs, Signal Double Lock, 2.5 mm



TE Part #4-1623925-0
CFR100 5% 47K



Documents

Product Drawings

SOLIS, R 22-16 M6

English

CAD Files

3D PDF

3D

Customer View Model

[ENG_CVM_CVM_130058_D.2d_dxf.zip](#)

English

Customer View Model

[ENG_CVM_CVM_130058_D.3d_igs.zip](#)

English

Customer View Model

[ENG_CVM_CVM_130058_D.3d_stp.zip](#)

English

By downloading the CAD file I accept and agree to the [Terms and Conditions](#) of use.

Instruction Sheets

Instruction Sheet (U.S.)

English

Agency Approvals

UL Report

English