

1-1825057-0 ✓ ACTIVE

ALCOSWITCH | ALCOSWITCH DIP GDS, ALCOSWITCH DIP

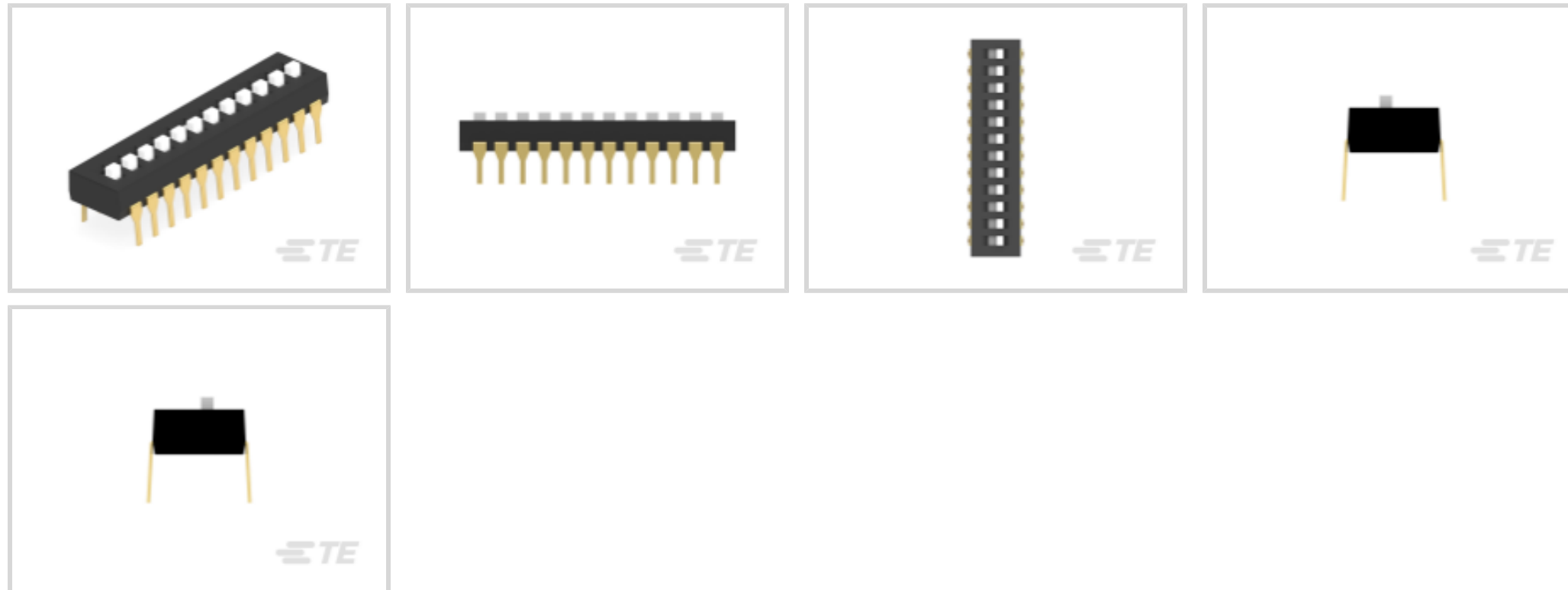
TE Internal #: 1-1825057-0

DIP Switch, Gold Flash Contact Plating, Black, Polyphenylene Sulfide (PPS), 12 Switch, -30 – 85 °C [-22 – 185 °F], ALCOSWITCH DIP

[View on TE.com >](#)



Switches > DIP & SIP Switches



Switch Contact Plating Material: **Gold Flash**

Case Color: **Black**

Case Material: **Polyphenylene Sulfide (PPS)**

Sealed Device: **No**

Number of Switches: **12**

Features

Product Type Features

Sealed Device	No
DIP & SIP Switch Type	DIP
Actuator Style	Extended Actuator, Slide Actuator

Configuration Features

Number of Positions	12
Number of Switches	12
Configuration (Pole-Throw)	Single Pole - Single Throw

Electrical Characteristics

Contact Current Rating	1 A
Operating Voltage	5 VDC

Body Features

Actuator Color	White
Product Orientation	Vertical
Case Color	Black

Case Material	Polyphenylene Sulfide (PPS)
---------------	-----------------------------

Contact Features

	1.2 μin
--	---------

Contact Underplating Material	Nickel
-------------------------------	--------

PCB Contact Termination Area Plating Material	Gold
---	------

Switch Contact Plating Material	Gold Flash
---------------------------------	------------

Contact Base Material	Copper Alloy
-----------------------	--------------

Termination Features

Termination Post & Tail Length	4 mm [.157 in]
--------------------------------	----------------

Termination Method to PCB	Through Hole - Solder
---------------------------	-----------------------

Housing Features

Centerline (Pitch)	2.54 mm [.1 in]
--------------------	-----------------

Dimensions

Product Length	32.51 mm [1.28 in]
----------------	--------------------

Product Height	3.5 mm [.138 in]
----------------	------------------

Usage Conditions

Operating Temperature Range	-30 – 85 °C [-22 – 185 °F]
-----------------------------	----------------------------

Operation/Application

Assembly Process Feature	Auto-Insert Packaging
--------------------------	-----------------------

Industry Standards

UL Flammability Rating	UL 94V-0
------------------------	----------

Packaging Features

Packaging Method	Tube
------------------	------

Packaging Quantity	14
--------------------	----

Product Compliance

[For compliance documentation, visit the product page on TE.com>](#)

EU RoHS Directive 2011/65/EU	Compliant
------------------------------	-----------

EU ELV Directive 2000/53/EC	Compliant
-----------------------------	-----------

China RoHS 2 Directive MIIT Order No 32, 2016	No Restricted Materials Above Threshold
---	---

EU REACH Regulation (EC) No. 1907/2006	Current ECHA Candidate List: JUNE 2025 (250)
--	---



Candidate List Declared Against: JAN 2018 (181)

Does not contain REACH SVHC

Halogen Content

Not Low Halogen - contains Br or Cl > 900 ppm.

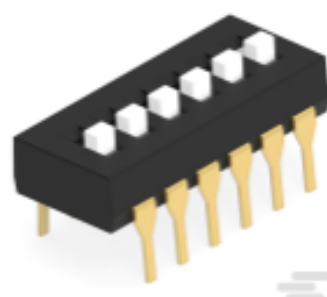
Solder Process Capability

Wave solder capable to 265°C

Product Compliance Disclaimer

This information is provided based on reasonable inquiry of our suppliers and represents our current actual knowledge based on the information they provided. This information is subject to change. The part numbers that TE has identified as EU RoHS compliant have a maximum concentration of 0.1% by weight in homogenous materials for lead, hexavalent chromium, mercury, PBB, PBDE, DBP, BBP, DEHP, DIBP, and 0.01% for cadmium, or qualify for an exemption to these limits as defined in the Annexes of Directive 2011/65/EU (RoHS2). Finished electrical and electronic equipment products will be CE marked as required by Directive 2011/65/EU. Components may not be CE marked. Additionally, the part numbers that TE has identified as EU ELV compliant have a maximum concentration of 0.1% by weight in homogenous materials for lead, hexavalent chromium, and mercury, and 0.01% for cadmium, or qualify for an exemption to these limits as defined in the Annexes of Directive 2000/53/EC (ELV). Regarding the REACH Regulation, the information TE provides on SVHC in articles for this part number is based on the latest European Chemicals Agency (ECHA) 'Guidance on requirements for substances in articles' posted at this URL: <https://echa.europa.eu/guidance-documents/guidance-on-reach>

Compatible Parts



TE Part # 1825057-5
ADE0604=DIP SWITCH,EXT,THRU/HL



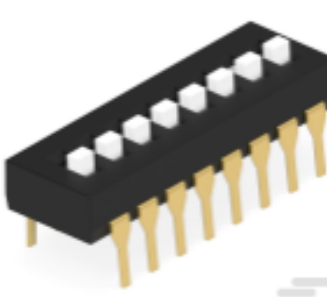
TE Part # 1825057-4
ADE0504=DIP SWITCH,EXT,THRU/HL



TE Part # 1825057-3
ADE0404=DIP SWITCH,EXT,THRU/HL

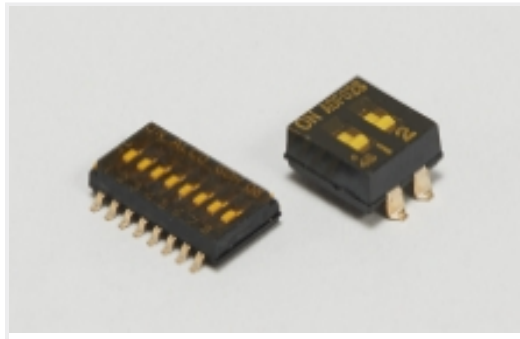


TE Part # 1825057-1
ADE0204=DIP SWITCH,EXT,THRU/HL



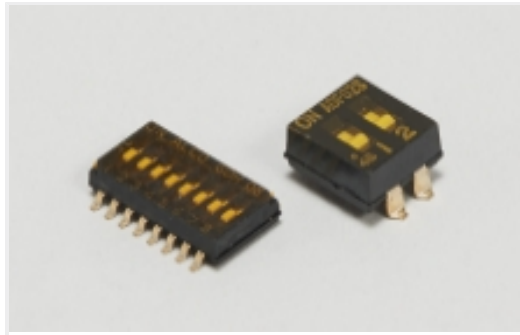
TE Part # 1825057-7
ADE0804=DIP SWITCH,EXT,THRU/HL

Also in the Series | **ALCOSWITCH DIP GDS**



DIP & SIP Switches(160)

Also in the Series | ALCOSWITCH DIP

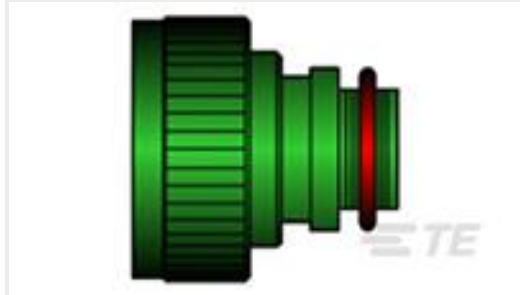


DIP & SIP Switches(160)



Rotary Switches(16)

Customers Also Bought



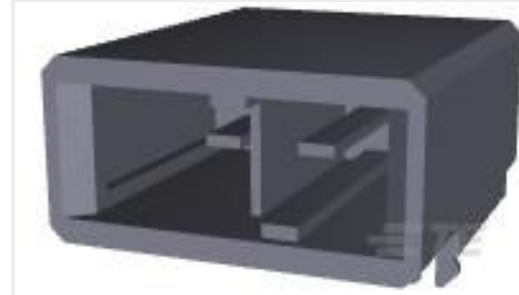
TE Part #814229-000
TXR54AC00-1004AI



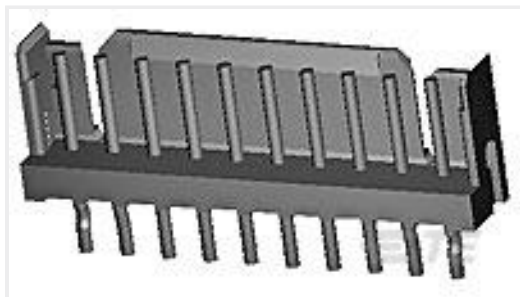
TE Part #172616-1
AMPLIMITE SCREWLOCK KIT



TE Part #1-178296-3
DYNAMIC D3100 HDR ASSY 6P H K/X PdNi PL



TE Part #1-179276-5
DYNAMIC 3200 HDR ASSY 2P H



TE Part #6-292161-6
CT P/HDR ASSY V 6P W/KINK BLAC



TE Part #643236-1
08P UMNL HDR ASSY R/A 94VO



TE Part #1410135-2
MULTIGIG RT T2.8" BP FULL CNT



TE Part #1-1825190-0
DIP Shunt, 12 pos



TE Part #5-5175473-6
.050CL, CHAMP, VERT PLUG, 50 POSN



TE Part #5787170-9
100 50SR R/A RCP ASSY, RDSN L/F



Documents

CAD Files

Customer View Model

[ENG_CVM_CVM_1-1825057-0_A.3d_igs.zip](#)

English

Customer View Model

[ENG_CVM_CVM_1-1825057-0_A.3d_stp.zip](#)

English

Customer View Model

[ENG_CVM_CVM_1-1825057-0_A.2d_dxf.zip](#)

English

3D PDF

3D

By downloading the CAD file I accept and agree to the [Terms and Conditions](#) of use.

Datasheets & Catalog Pages

[SWITCHES_CORE_PROGRAM_CATALOG](#)

English

[SWITCHES_CATALOG_SECTION_A_DIP_SWITCHES](#)

English