

1-1718492-6 ✓ ACTIVE

AMP | AMP MCP 1.5K, AMP MCP Connector System

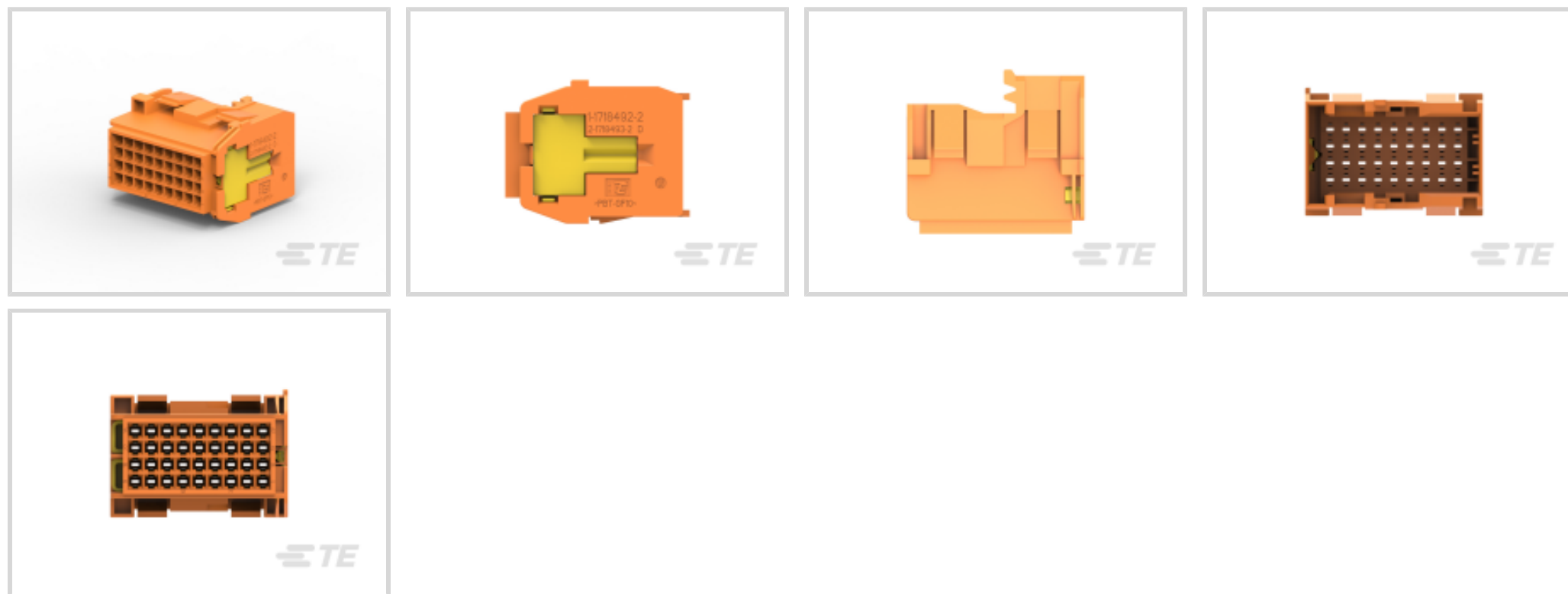
TE Internal #: 1-1718492-6

36 Position Housing, Housing for Male Terminals, Wire-to-Wire, 4 mm [.157 in] Centerline, Orange, Wire & Cable, Power, Hybrid

[View on TE.com >](#)



Connectors > Automotive Connectors > Automotive Housings > AMP Unsealed Connector Housing



Number of Positions: **36**

Connector & Housing Type: **Housing for Male Terminals**

Mating Tab Width: **1.6 mm [.063 in]**

Connector System: **Wire-to-Wire**

Centerline (Pitch): **4 mm [.157 in]**

[All AMP Unsealed Connector Housing \(110\)](#)

Features

Industry Standards

UL Flammability Rating	UL 94HB
------------------------	---------

Dimensions

Row-to-Row Spacing	4.2 mm, 10.9 mm[.43 in][.165 in]
--------------------	----------------------------------

Packaging Features

Packaging Method	Box
Packaging Quantity	330

Mechanical Attachment

Strain Relief	Without
Terminal Position Assurance	No
Mating Alignment Type	Keyed
Mating Alignment	With
Connector Mounting Type	Cable Mount (Free-Hanging)

Other



Serviceable	Yes
Connector Position Assurance Capable	No
EU RoHS Compliance	Compliant
EU ELV Compliance	Compliant

Electrical Characteristics

Operating Voltage	36 VDC
Nominal Voltage Architecture	36 V

Body Features

Cable Exit Angle	180°
Primary Product Color	Orange
Connector & Keying Code	F

Housing Features

Housing Material	PBT GF
Centerline (Pitch)	4 mm [.157 in]

Contact Features

Contact Size	1.6mm
Contact Type	Tab
Mating Tab Width	1.6 mm [.063 in]

Product Type Features

Mixed & Hybrid Connector	Yes
Connector Shape	Rectangular
Connector & Housing Type	Housing for Male Terminals
Connector System	Wire-to-Wire
Sealable	No
Primary Locking Feature	Integrated in Housing
Connector & Contact Terminates To	Wire & Cable

Configuration Features

Number of Positions	36
Number of Rows	4

Usage Conditions

Operating Temperature (Max)	120 °C [248 °F]
Operating Temperature Range	-40 – 120 °C [-40 – 248 °F]



Operation/Application

Circuit Application	Power
---------------------	-------

Product Compliance

[For compliance documentation, visit the product page on TE.com>](#)

EU RoHS Directive 2011/65/EU	Compliant
EU ELV Directive 2000/53/EC	Compliant
China RoHS 2 Directive MIIT Order No 32, 2016	No Restricted Materials Above Threshold
EU REACH Regulation (EC) No. 1907/2006	Current ECHA Candidate List: JUNE 2024 (241) Candidate List Declared Against: JUNE 2024 (241) Does not contain REACH SVHC
Halogen Content	Low Halogen - Br, Cl, F, I < 900 ppm per homogenous material. Also BFR/CFR/PVC Free
Solder Process Capability	Not reviewed for solder process capability

Product Compliance Disclaimer

This information is provided based on reasonable inquiry of our suppliers and represents our current actual knowledge based on the information they provided. This information is subject to change. The part numbers that TE has identified as EU RoHS compliant have a maximum concentration of 0.1% by weight in homogenous materials for lead, hexavalent chromium, mercury, PBB, PBDE, DBP, BBP, DEHP, DIBP, and 0.01% for cadmium, or qualify for an exemption to these limits as defined in the Annexes of Directive 2011/65/EU (RoHS2). Finished electrical and electronic equipment products will be CE marked as required by Directive 2011/65/EU. Components may not be CE marked. Additionally, the part numbers that TE has identified as EU ELV compliant have a maximum concentration of 0.1% by weight in homogenous materials for lead, hexavalent chromium, and mercury, and 0.01% for cadmium, or qualify for an exemption to these limits as defined in the Annexes of Directive 2000/53/EC (ELV). Regarding the REACH Regulation, the information TE provides on SVHC in articles for this part number is based on the latest European Chemicals Agency (ECHA) 'Guidance on requirements for substances in articles' posted at this URL: <https://echa.europa.eu/guidance-documents/guidance-on-reach>

Compatible Parts



TE Part # CAT-T4827-T273
TIMER, RECEPTACLE AND TAB



TE Part # 2377783-4
36POS,AMP MCP 1.5K,TAB HSG ASSY, UNSLD

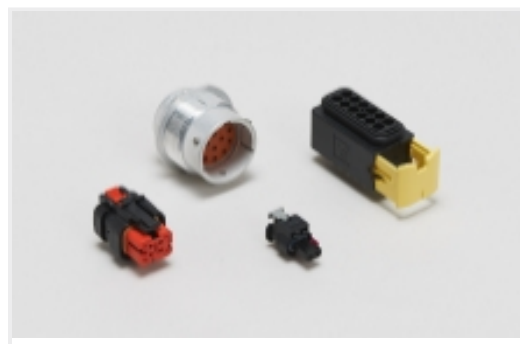


TE Part # 1-1718485-6
CARRIER FOR RECEPT. INSERTS 36 POS

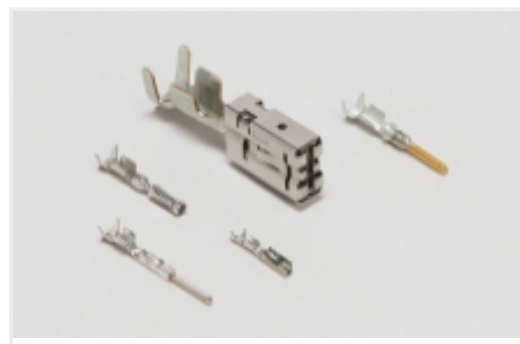
Also in the Series | AMP MCP 1.5K



Automotive Connector Caps & Covers
(24)



Automotive Housings(265)



Automotive Terminals(7)

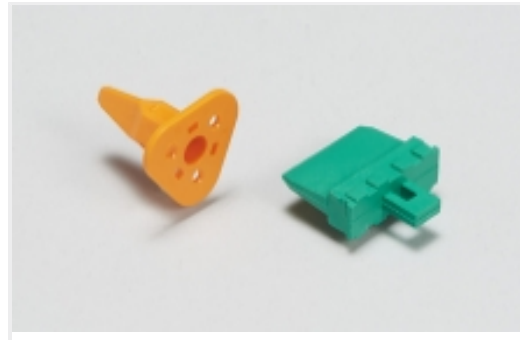


Insertion & Extraction Tools(13)

Also in the Series | AMP MCP Connector System



Automotive Connector Caps & Covers
(24)



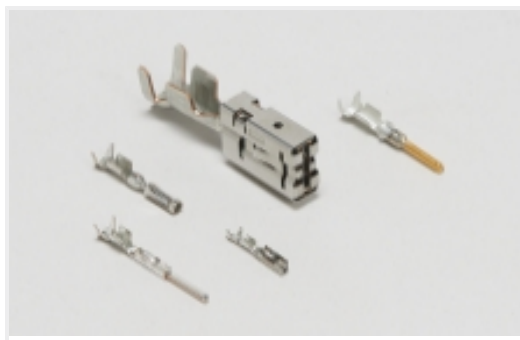
Automotive Connector Locks &
Position Assurance(4)



Automotive Headers(31)



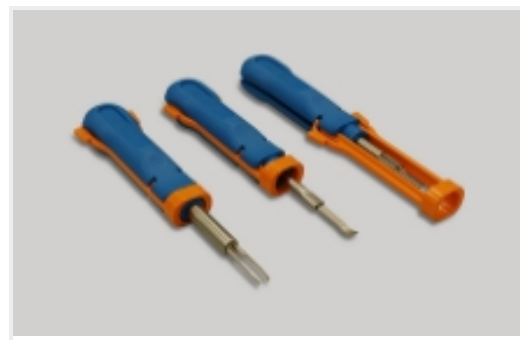
Automotive Housings(265)



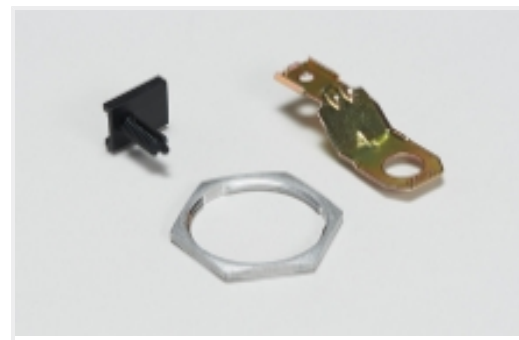
Automotive Terminals(7)



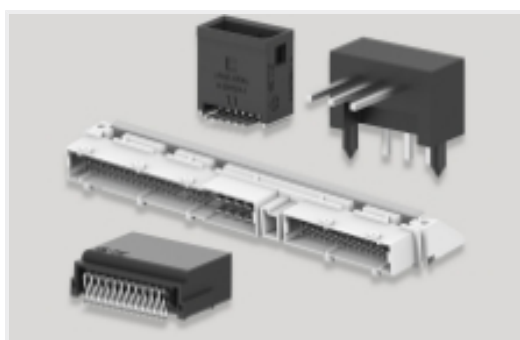
Connector Seals & Cavity Plugs(5)



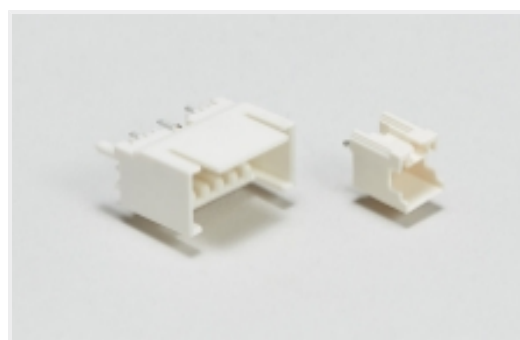
Insertion & Extraction Tools(13)



Other Automotive Connector
Accessories(2)

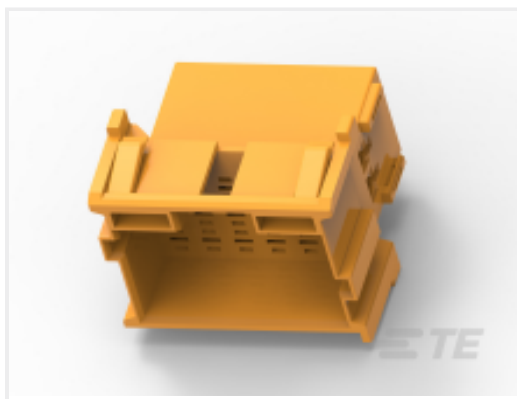


PCB Headers & Receptacles(31)



Wire-to-Board Headers & Receptacles
(30)

Customers Also Bought



TE Part #6-967629-1
TAB HOUSING, 2.8MM, 18POS.



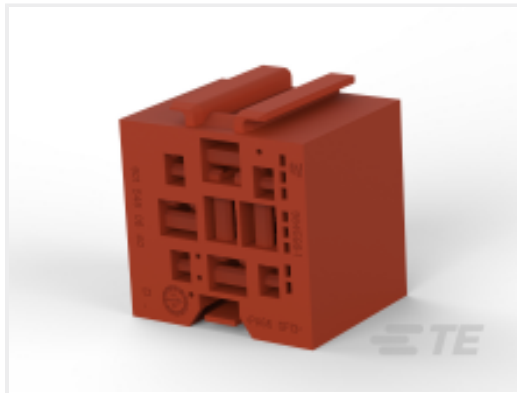
TE Part #CAT-R7602-T273
ROUND CONNECTOR SYSTEM, PIN
AND SOCKET



TE Part #2-1564512-1
8POS,TAB 1.6X0.6,TAB HSG,ASSY



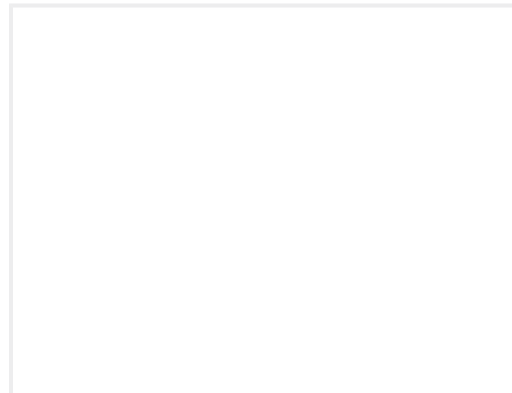
TE Part #9-968970-2
MCP2,8 GEH ASSY 6P



TE Part #9-964598-1
HALTER F.9P RELAIS



TE Part #1355901-1
MCP9,5 BU-GEH 1P



TE Part #188522-3
O-RING 25,07X2,62



TE Part #734767-1
DIE SET (CI-2)



TE Part #734790-1
SERVICE TOOL

Documents

Product Drawings

[1.5MM TAB HSG 36 POS ASSY](#)

English

CAD Files

[3D PDF](#)

3D

Customer View Model

[ENG_CVM_CVM_1-1718492-6_D.2d_dxf.zip](#)

English

Customer View Model

[ENG_CVM_CVM_1-1718492-6_D.3d_igs.zip](#)

English

Customer View Model

[ENG_CVM_CVM_1-1718492-6_D.3d_stp.zip](#)

English

By downloading the CAD file I accept and agree to the [Terms and Conditions](#) of use.

Product Specifications



Application Specification

German