

1-1571983-4 ✓ ACTIVE

[Alcoswitch](#) | [Alcoswitch DIP](#), [Alcoswitch DIP GDH](#)

TE Internal #: 1-1571983-4

DIP Switch, Gold Contact Plating, Black, Polyphenylene Sulfide (PPS), Sealed, 10 Switch, -30 – 85 °C, Recessed Rocker, Alcoswitch DIP

[View on TE.com >](#)



Switches > DIP & SIP Switches



DIP & SIP Switch Type: **DIP**

Switch Contact Plating Material: **Gold**

Case Color: **Black**

Case Material: **Polyphenylene Sulfide (PPS)**

Sealed Device: **Yes**

## Features

### Industry Standards

UL Flammability Rating	UL 94V-0
------------------------	----------

### Dimensions

Product Length	13.82 mm[.544 in]
Product Height	2.21 mm[.087 in]

### Packaging Features

Packaging Method	Tube
Packaging Quantity	2000

### Housing Features

Low Profile	Yes
Centerline (Pitch)	1.27 mm[.05 in]

### Configuration Features

Number of Positions	10
Number of Switches	10
Configuration (Pole-Throw)	Single Pole - Single Throw

### Body Features

Sealing Method	Sealing Tape
Case Color	Black
Case Material	Polyphenylene Sulfide (PPS)



### Contact Features

Contact Underplating Material	Nickel
PCB Contact Termination Area Plating Material	Gold
Switch Contact Plating Material	Gold
Contact Base Material	Copper Alloy

### Product Type Features

Leg Style	Gull Wing
DIP & SIP Switch Type	DIP
Sealed Device	Yes
Actuator Style	Recessed Rocker

### Usage Conditions

Operating Temperature Range	-30 – 85 °C
-----------------------------	-------------

### Electrical Characteristics

Contact Current Rating	.1 A
Operating Voltage	50 VDC

### Termination Features

Termination Method to PCB	Surface Mount
---------------------------	---------------

### Other

EU RoHS Compliance	Compliant
EU ELV Compliance	Compliant

### Product Compliance

[For compliance documentation, visit the product page on TE.com>](#)

EU RoHS Directive 2011/65/EU	Compliant
EU ELV Directive 2000/53/EC	Compliant
China RoHS 2 Directive MIIT Order No 32, 2016	No Restricted Materials Above Threshold
EU REACH Regulation (EC) No. 1907/2006	Current ECHA Candidate List: JUNE 2024 (241) Candidate List Declared Against: JUNE 2023 (235) Does not contain REACH SVHC
Halogen Content	Low Halogen - Br, Cl, F, I < 900 ppm per homogenous material. Also BFR/CFR/PVC Free

Solder Process Capability

Reflow solder capable to 260°C

Product Compliance Disclaimer

This information is provided based on reasonable inquiry of our suppliers and represents our current actual knowledge based on the information they provided. This information is subject to change. The part numbers that TE has identified as EU RoHS compliant have a maximum concentration of 0.1% by weight in homogenous materials for lead, hexavalent chromium, mercury, PBB, PBDE, DBP, BBP, DEHP, DIBP, and 0.01% for cadmium, or qualify for an exemption to these limits as defined in the Annexes of Directive 2011/65/EU (RoHS2). Finished electrical and electronic equipment products will be CE marked as required by Directive 2011/65/EU. Components may not be CE marked. Additionally, the part numbers that TE has identified as EU ELV compliant have a maximum concentration of 0.1% by weight in homogenous materials for lead, hexavalent chromium, and mercury, and 0.01% for cadmium, or qualify for an exemption to these limits as defined in the Annexes of Directive 2000/53/EC (ELV). Regarding the REACH Regulation, the information TE provides on SVHC in articles for this part number is based on the latest European Chemicals Agency (ECHA) 'Guidance on requirements for substances in articles' posted at this URL: <https://echa.europa.eu/guidance-documents/guidance-on-reach>

### Compatible Parts



TE Part # 1977830-1  
DIP SWITCH GDH02SA04



TE Part # 1571983-4  
GDH04S04=DIP SWITCH



TE Part # 1571983-5  
GDH04STR04=DIP SWITCH



TE Part # 1-1571983-1  
GDH08STR04=DIP SWITCH

TE Part # 1-1571983-6  
GDH10STRNTS04=DIP SWITCH



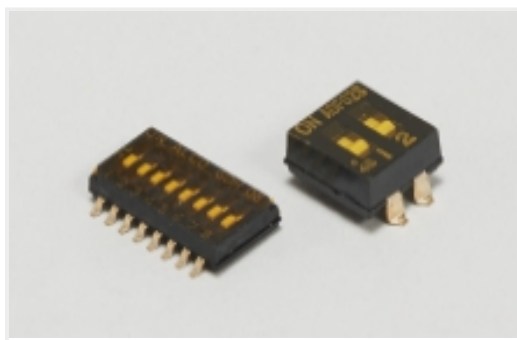
TE Part # 1977830-4  
DIP SWITCH GDH08SA04

### Also in the Series | Alcoswitch DIP GDH



DIP & SIP Switches(160)

### Also in the Series | Alcoswitch DIP

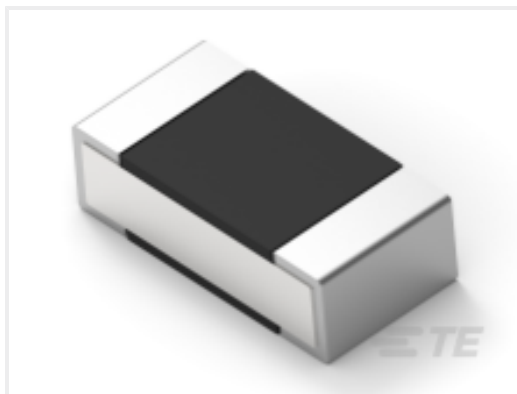


DIP & SIP Switches(160)

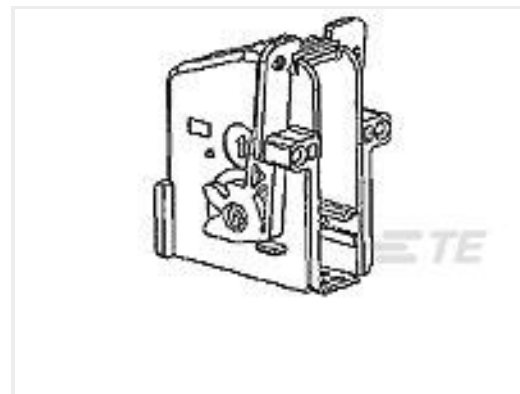


Rotary Switches(16)

## Customers Also Bought



TE Part #1-2176308-8  
RP 1E 0.1W 200K 0.1% 25PPM 5K RL



TE Part #1-1355350-1  
MQS ABDECKKAPPE 18P



TE Part #2374901-1  
GEMnet HDR, ASSY, 1P, 90deg,COD A



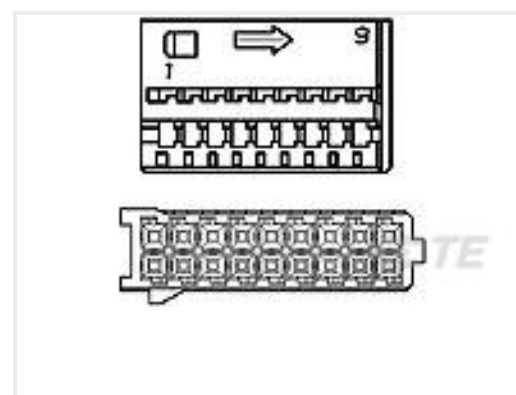
TE Part #6-1676480-0  
CRG0402 1% 3K6



TE Part #CONBNC002  
BNC Jack 50 Ohm PCB Through Hole



TE Part #2176331-2  
CRGP 2512 12R 1%



TE Part #1355348-1  
18POS MQS REC



TE Part #104069-2  
50 SYSTEM 50 HDR DDR A SHRD



TE Part #4-2176230-7  
3522 5K6 5% 3W



TE Part #8-2176312-9  
RP 1E 0.1W 102K 0.1% 25PPM 1K RL

## Documents

[CAD Files](#)

[3D PDF](#)

English

Customer View Model

[ENG\\_CVM\\_1-1571983-4\\_B.2d\\_dxf.zip](#)

English

Customer View Model

[ENG\\_CVM\\_1-1571983-4\\_B.3d\\_igs.zip](#)



English

**Customer View Model**

[ENG\\_CVM\\_1-1571983-4\\_B.3d\\_stp.zip](#)

English

**Customer View Model**

[ENG\\_CVM\\_CVM\\_1-1571983-4\\_C.3d\\_igs.zip](#)

English

**Customer View Model**

[ENG\\_CVM\\_CVM\\_1-1571983-4\\_C.3d\\_stp.zip](#)

English

**Customer View Model**

[ENG\\_CVM\\_CVM\\_1-1571983-4\\_C.2d\\_dxf.zip](#)

English

**3D PDF**

3D

By downloading the CAD file I accept and agree to the [Terms and Conditions](#) of use.

**Datasheets & Catalog Pages**

[SWITCHES\\_CORE\\_PROGRAM\\_CATALOG](#)

English