

ME 22,5 TBUS ADAPTER KMGY - DIN rail bus connector

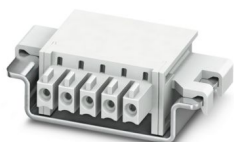


2201756

<https://www.phoenixcontact.com/nl/products/2201756>

Please be informed that the data shown in this PDF document is generated from our online catalog. Please find the complete data in the user documentation. Our general terms of use for downloads are valid.

DIN rail bus adapter for ME and ME-MAX, design width: 22.5 mm, 5 parallel positions, color: light gray (similar to RAL 7035)



Your advantages

- Space-saving DIN rail mounting

Commercial data

Item number	2201756
Packing unit	50 pc
Minimum order quantity	50 pc
Sales key	ACHACA
Product key	ACHACA
GTIN	4046356909020
Weight per piece (including packing)	4,065 g
Weight per piece (excluding packing)	4 g
Customs tariff number	85366990
Country of origin	DE

ME 22,5 TBUS ADAPTER KMGY - DIN rail bus connector



2201756

<https://www.phoenixcontact.com/nl/products/2201756>

Technical data

Notes

Recommendation	Material of contact pads for bus connector, galvanic gold (hard gold)
----------------	---

Product properties

Product family	TBUS5-22,5..
Number of positions	5
Pitch	3.81 mm

Material specifications

Color (Housing)	light gray (RAL 7035)
Flammability rating according to UL 94	V0
Insulating material	PA
Housing material	PA

Dimensions

Width	22.5 mm
Pitch	3.81 mm

ME 22,5 TBUS ADAPTER KMGY - DIN rail bus connector





2201756

<https://www.phoenixcontact.com/nl/products/2201756>

Approvals

To download certificates, visit the product detail page: <https://www.phoenixcontact.com/nl/products/2201756>

 cUL Recognized Approval ID: E118976-20151204				
	Nominal voltage U_N	Nominal current I_N	Cross section AWG	Cross section mm^2
keine				
	150 V	6 A	-	-

 UL Recognized Approval ID: E118976-20151204				
	Nominal voltage U_N	Nominal current I_N	Cross section AWG	Cross section mm^2
keine				
	150 V	8 A	-	-

ME 22,5 TBUS ADAPTER KMGY - DIN rail bus connector



2201756

<https://www.phoenixcontact.com/nl/products/2201756>

Classifications

ECLASS

ECLASS-13.0	27460201
ECLASS-15.0	27460201

ETIM

ETIM 10.0	EC002637
-----------	----------

UNSPSC

UNSPSC 21.0	39121400
-------------	----------

ME 22,5 TBUS ADAPTER KMGY - DIN rail bus connector



2201756

<https://www.phoenixcontact.com/nl/products/2201756>

Environmental product compliance

EU RoHS

Fulfills EU RoHS substance requirements	Yes, No exemptions
---	--------------------

China RoHS

Environment friendly use period (EFUP)	EFUP-E
	No hazardous substances above the limits

EU REACH SVHC

REACH candidate substance (CAS No.)	No substance above 0.1 wt%
-------------------------------------	----------------------------

Phoenix Contact 2026 © - all rights reserved
<https://www.phoenixcontact.com>

PHOENIX CONTACT B.V.
Hengelder 56 6902 PA Zevenaar
Postbus 246 6900 AE Zevenaar
(0316) 59 17 20
sales@phoenixcontact.nl