



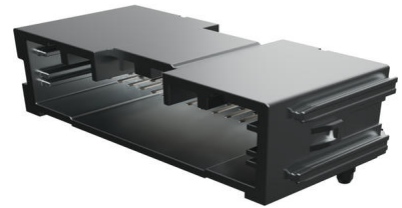
**Part Number :** [349618344](#)

**Product Description :** Mini50 Unsealed Right-Angle Hybrid Header, UL 94 HB, 34 Circuits, Polarization B, Gray, Tape and Reel

**Series Number :** 34961

**Status :** Active

**Product Category :** PCB Headers and Receptacles



---

## Documents and Resources

### Drawings

[349618344 sd.pdf](#)

[PK-47799-0001-001.pdf](#)

### 3D Models and Design Files

[STEP AP242](#)

[SOLIDWORKS](#)

[Creo](#)

[Symbol and Footprint \(Multi-Format\)](#)

### Specifications


[PS-34959-001-001.pdf](#)

[TS-34961-001-001.pdf](#)

---

## Product Environment Compliance

### Compliance

GADSL/IMDS	Compliant with Exemption 44; 33
China RoHS	 per SJ/T 11365-2006
EU ELV	Compliant per 2000/53/EC
Low-Halogen Status	Low-Halogen per IEC 61249-2-21
REACH SVHC	Not Contained per D(2025)6375-DC (05 Nov 2025)
EU RoHS	Compliant per EU 2015/863

[Compliance Statements](#)

- EU RoHS
- REACH SVHC
- Low-Halogen

#### Industry Documents

- IPC 1752A Class C
- IPC 1752A Class D
- Molex Product Compliance Declaration
- IEC-62474
- chemSHERPA (xml)

#### Substances of Interest

- PFAS

#### EU RoHS Certificate of Compliance

#### Additional Product Compliance Information

## Part Details

### General

Status	Active
Category	PCB Headers and Receptacles
Series	34961
Description	Mini50 Unsealed Right-Angle Hybrid Header, UL 94 HB, 34 Circuits, Polarization B, Gray, Tape and Reel
Application	Automotive, Power, Signal, Wire-to-Board
Comments	30 x 0.50mm blades = 4.0A; 4 x 1.20mm blades = 16.0A
Component Type	PCB Header
Product Name	Mini50
UPC	195842848405

### Electrical

Current - Maximum per Contact	16.0A, 4.0A
Voltage - Maximum	500V DC

### Physical

Breakaway	No
Circuits (Loaded)	34

Circuits (maximum)	34
Color - Resin	Gray
Durability (mating cycles max)	10
First Mate / Last Break	No
Glow-Wire Capable	No
Guide to Mating Part	No
Keying to Mating Part	Yes
Lock to Mating Part	Yes
Material - Metal	Brass
Material - Plating Mating	Tin
Material - Plating Termination	Tin
Material - Resin	SPS
Net Weight	6.700/g
Number of Rows	3
Orientation	Right Angle
Packaging Type	Embossed Tape on Reel
PCB Locator	Yes
PCB Retention	None
PC Tail Length	2.75mm
Pitch - Mating Interface	2.00mm
Polarized to Mating Part	Yes
Polarized to PCB	Yes
Stackable	Yes
Temperature Range - Operating	-40° to +105°C
Termination Interface Style	Through Hole

---

## Mates With / Use With

### Mates with Part(s)

Description	Part Number
Mini50 Unsealed Receptacle, 3 Rows, with CPA, 34 Circuits, Polarization Option B, Gray	<a href="#"><u>349590341</u></a>
Mini50 Unsealed Receptacle, 3 Rows, without CPA, 34 Circuits, Polarization Option B, Gray	<a href="#"><u>349590348</u></a>

