



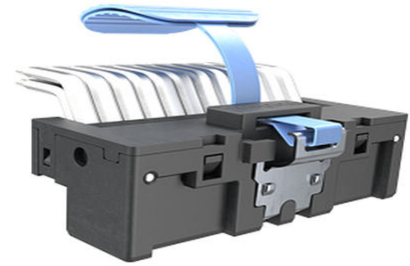
Part Number : [2253511002](#)

Product Description : NextStream Right-Angle-to-NextStream Right-Angle Cable Assembly, Pull Tab, 8x, 74 Circuits, 12 HS Channels Max, PCIe Gen 6, 1000.00mm Length

Series Number : 225351

Status : Active

Product Category : High-Speed I/O Cable Assemblies



Documents and Resources

Drawings

[2253511002_sd.pdf](#)

Product Environment Compliance

Compliance

| | |
|--------------------|---|
| GADSL/IMDS | Not Relevant |
| China RoHS | Not Reviewed per SJ/T 11365-2006 |
| EU ELV | Not Relevant |
| Low-Halogen Status | Not Reviewed per IEC 61249-2-21 |
| REACH SVHC | Not Reviewed per D(2025)6375-DC (05 Nov 2025) |
| EU RoHS | Not Reviewed per EU 2015/863 |

Compliance Statements

- EU RoHS
- REACH SVHC
- Low-Halogen

Industry Documents

- IPC 1752A Class C
- IPC 1752A Class D
- Molex Product Compliance Declaration
- IEC-62474
- chemSHERPA (xml)

Substances of Interest

- PFAS

EU RoHS Certificate of Compliance

Additional Product Compliance Information

Part Details

General

| | |
|------------------------|--|
| Status | Active |
| Category | High-Speed I/O Cable Assemblies |
| Series | 225351 |
| Description | NextStream Right-Angle-to-NextStream Right-Angle Cable Assembly, Pull Tab, 8x, 74 Circuits, 12 HS Channels Max, PCIe Gen 6, 1000.00mm Length |
| Assembly Configuration | Dual Ended Connectors |
| Connector to Connector | NextStream-to-NextStream |
| Product Name | NextStream |
| Type | Internal |
| UPC | 198282219446 |

Electrical

| | |
|-------------------------------|-----------------|
| Current - Maximum per Contact | 1.1A |
| Data Rate | 64 Gbps (PAM-4) |
| Voltage - Maximum | 30V AC (RMS)/DC |

Physical

| | |
|--------------------------------|-------------|
| Cable Bundling | Woven Braid |
| Cable Length | 1000.00mm |
| Circuits (Loaded) | 74 |
| Circuits (maximum) | 74 |
| Color - Resin | Black |
| Durability (mating cycles max) | 200 |
| Gender | Plug/Plug |
| Lock to Mating Part | Yes |
| Material - Plating Mating | Gold |

| | |
|------------------|----------------------------|
| Material - Resin | Liquid Crystal Polymer |
| Number of Pairs | 24 |
| Number of Rows | 2 |
| Orientation | Right-Angle-to-Right-Angle |
| Packaging Type | Bag |
| Release Style | Pull Tab |
| Single Ended | No |
| Wire/Cable Type | Twinax |

Mates With / Use With

Mates with Part(s)

| Description | Part Number |
|--|-----------------------------------|
| NextStream Connector, 8x, 74 Circuits, 12 HS Channels Max, 1.55mm Shell Leg Length, PCIe Gen 6, with Pick and Place Dust Cap | <u>2203855021</u> |