



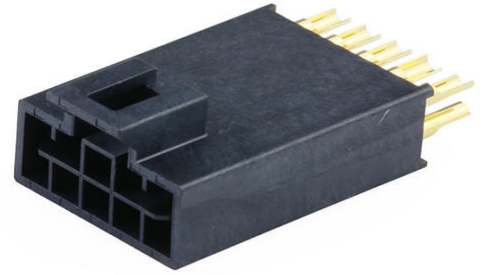
Part Number : [2251481110](#)

Product Description : Nano-Fit Test Plug, Dual Row, 10 Circuits

Series Number : 225148

Status : Active

Product Category : PCB Headers and Receptacles



Documents and Resources

Drawings

[2251481110_sd.pdf](#)

[2251481000-PK-000.pdf](#)

3D Models and Design Files

[STEP AP242](#)

[SOLIDWORKS](#)

[Creo](#)

Specifications


[AS-105300-100-001.pdf](#)

[2251481000-PS-000.pdf](#)

[2251481000-TS-000.pdf](#)

Product Environment Compliance

Compliance

GADSL/IMDS	Not Relevant
China RoHS	 per SJ/T 11365-2006
EU ELV	Not Relevant
Low-Halogen Status	Low-Halogen per IEC 61249-2-21
REACH SVHC	Contains Lead per D(2025)6375-DC (05 Nov 2025)
EU RoHS	Compliant with Exemption 6(c) per EU 2015/863

[Compliance Statements](#)

- EU RoHS
- REACH SVHC
- Low-Halogen

Industry Documents

- IPC 1752A Class C
- IPC 1752A Class D
- Molex Product Compliance Declaration
- IEC-62474
- chemSHERPA (xml)

Substances of Interest

- PFAS

EU RoHS Certificate of Compliance

Additional Product Compliance Information

Part Details

General

Status	Active
Category	PCB Headers and Receptacles
Series	225148
Description	Nano-Fit Test Plug, Dual Row, 10 Circuits
Application	Power, Wire-to-Board
Component Type	Test Plug
Product Name	Nano-Fit
UPC	198282211051

Electrical

Current - Maximum per Contact	2.5A
Voltage - Maximum	250V AC (RMS)/DC

Physical

Breakaway	No
Circuits (Loaded)	10
Circuits (maximum)	10
Color - Resin	Black
Durability (mating cycles max)	10000
First Mate / Last Break	No

Glow-Wire Capable	Yes
Lock to Mating Part	Yes
Material - Metal	Copper Alloy, Stainless Steel
Material - Plating Mating	Gold
Material - Plating Termination	Gold
Material - Resin	High Temperature Thermoplastic
Net Weight	3.200/g
Number of Rows	2
Orientation	Vertical
Packaging Type	Bag
PCB Locator	No
PCB Retention	None
PC Tail Length	4.40mm
Pitch - Mating Interface	2.50mm
Polarized to Mating Part	Yes
Polarized to PCB	No
Shrouded	Fully
Stackable	No
Temperature Range - Operating	-40° to +125°C
Termination Interface Style	Solder or Weld

Mates With / Use With

Mates with Part(s)

Description	Part Number
Nano-Fit TPA Capable Single Row Receptacle Housings	<u>105307</u>
Nano-Fit TPA Capable Dual Row Receptacle Housings	<u>105308</u>