



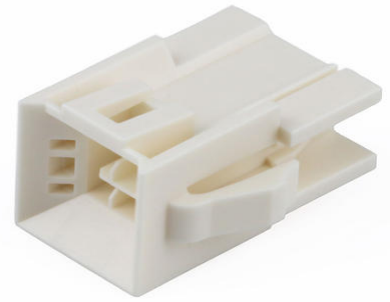
Part Number : [2245561416](#)

Product Description : Nano-Fit BMI Plug Housing, TPA Capable, 2.50mm Pitch, Dual Row, 16 Circuits, Natural, Panel Mount, Glow-Wire Capable

Series Number : 224556

Status : Active

Product Category : Connector Housings



Documents and Resources

Drawings

[2245561416_sd.pdf](#)

[2245561000-PK-000.pdf](#)

3D Models and Design Files

[STEP AP242](#)

[SOLIDWORKS](#)

[Creo](#)

Specifications


[AS-105300-100-001.pdf](#)

[2014471000-PS-000.pdf](#)

[2014471000-TS-000.pdf](#)

Product Environment Compliance

Compliance

GADSL/IMDS	Not Relevant
China RoHS	 per SJ/T 11365-2006
EU ELV	Not Relevant
Low-Halogen Status	Not Low-Halogen per IEC 61249-2-21
REACH SVHC	Not Contained per D(2025)6375-DC (05 Nov 2025)
EU RoHS	Compliant per EU 2015/863

Compliance Statements

- EU RoHS
- REACH SVHC
- Low-Halogen

Industry Documents

- IPC 1752A Class C
- IPC 1752A Class D
- Molex Product Compliance Declaration
- IEC-62474
- chemSHERPA (xml)

Substances of Interest

- PFAS

EU RoHS Certificate of Compliance

Additional Product Compliance Information

Part Details

General

Status	Active
Category	Connector Housings
Series	224556
Description	Nano-Fit BMI Plug Housing, TPA Capable, 2.50mm Pitch, Dual Row, 16 Circuits, Natural, Panel Mount, Glow-Wire Capable
Application	Power, Wire-to-Wire
Product Name	Nano-Fit BMI
UPC	196823687921

Physical

Circuits (maximum)	16
Color - Resin	Natural
Gender	Plug
Glow-Wire Capable	Yes
Keying to Mating Part	Yes
Lock to Mating Part	Yes
Material - Resin	Nylon
Net Weight	2.970/g

Number of Rows	2
Packaging Type	Bag
Panel Mount	Yes
Pitch - Mating Interface	2.50mm
Pitch - Termination Interface	2.50mm
Polarized to Mating Part	Yes
Temperature Range - Operating	-40° to +125°C

Mates With / Use With

Mates with Part(s)

Description	Part Number
Nano-Fit Receptacle Housing, TPA Capable, 2.50mm Pitch, Dual Row, 16 Circuits, Natural, Glow-Wire Capable	<u>1053082216</u>
Nano-Fit BMI Receptacle Housing, 2.50mm Pitch, Dual Row, 16 Circuits, Natural, Glow-Wire Capable	<u>2192682216</u>

Use with Part(s)

Description	Part Number
Nano-Fit Male Crimp Terminals	<u>201447</u>
Nano-Fit Terminal Position Assurance (TPA) Retainers	<u>105325</u>