



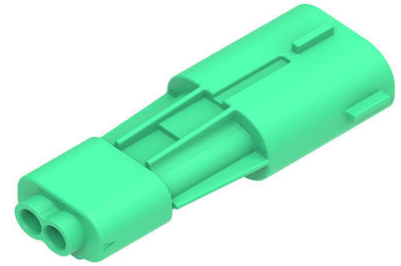
Part Number : [2077780802](#)

Product Description : Squba 3.6 Sealed Plug Assembly, 3.60mm Pitch, 2 Circuits, Single Row, Glow-Wire Capable, Key H, Green, UL1007/UL1061 Compatible

Series Number : 207778

Status : Active

Product Category : Connector Housings



Documents and Resources

Drawings

[2077780802 sd.pdf](#)

[2077780000-PK-000.pdf](#)

3D Models and Design Files

[STEP AP242](#)

[SOLIDWORKS](#)

[Creo](#)

Specifications


[2077760000-AS-000.pdf](#)

[2077760000-PS-000.pdf](#)

[2077760000-TS-000.pdf](#)

Product Environment Compliance

Compliance

| | |
|--------------------|---|
| GADSL/IMDS | Not Relevant |
| China RoHS |  per SJ/T 11365-2006 |
| EU ELV | Not Relevant |
| Low-Halogen Status | Not Low-Halogen per IEC 61249-2-21 |
| REACH SVHC | Not Contained per D(2025)6375-DC (05 Nov 2025) |
| EU RoHS | Compliant per EU 2015/863 |

Compliance Statements

- EU RoHS
- REACH SVHC
- Low-Halogen

Industry Documents

- IPC 1752A Class C
- IPC 1752A Class D
- Molex Product Compliance Declaration
- IEC-62474
- chemSHERPA (xml)

Substances of Interest

- PFAS

EU RoHS Certificate of Compliance

Additional Product Compliance Information

Part Details

General

| | |
|--------------|---|
| Status | Active |
| Category | Connector Housings |
| Series | 207778 |
| Description | Squba 3.6 Sealed Plug Assembly, 3.60mm Pitch, 2 Circuits, Single Row, Glow-Wire Capable, Key H, Green, UL1007/UL1061 Compatible |
| Application | Power, Signal, Wire-to-Wire |
| Product Name | Squba |
| UPC | 196823741272 |

Agency

| | |
|----|--------|
| UL | E29179 |
|----|--------|

Physical

| | |
|--------------------|-------|
| Circuits (maximum) | 2 |
| Color - Resin | Green |
| Flammability | 94V-0 |
| Gender | Plug |

| | |
|-------------------------------|----------------|
| Glow-Wire Capable | Yes |
| Keying to Mating Part | None |
| Lock to Mating Part | Yes |
| Material - Resin | Nylon |
| Net Weight | 3.212/g |
| Number of Rows | 1 |
| Packaging Type | Bag |
| Panel Mount | No |
| Pitch - Mating Interface | 3.60mm |
| Pitch - Termination Interface | 3.60mm |
| Polarized to Mating Part | Yes |
| Temperature Range - Operating | -40° to +105°C |

Mates With / Use With

Mates with Part(s)

| Description | Part Number |
|---|-----------------------------------|
| Squba 3.6 Sealed Receptacle Assembly, 3.60mm Pitch, 2 Circuits, Single Row, Glow-Wire Capable, Key H, Green, UL1007/UL1061 Compatible | <u>2077820802</u> |

Use with Part(s)

| Description | Part Number |
|---|-----------------------------------|
| Squba 3.6 Plug Terminal, Matte Tin Plating, UL1007/UL1061 Compatible, 16 AWG, Reel | <u>2077760001</u> |
| Squba 3.6 Plug Terminal, Matte Tin Plating, UL1007/UL1061 Compatible, 20-18 AWG, Reel | <u>2077760002</u> |
| Squba Weather Cap for 4 or 2 Circuit Plug Housing | <u>2204230004</u> |