



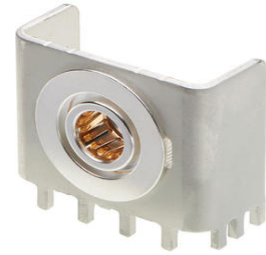
**Part Number :** [2051002000](#)

**Product Description :** Sentrality 8.00mm Right-Angle Socket Assembly, 3.80mm Solder Tails, with +/-1.00mm Self-alignment Capability, Tray

**Series Number :** 205100

**Status :** Active

**Product Category :** PCB Headers and Receptacles



---

## Documents and Resources

### Drawings

[2051002000\\_sd.pdf](#)

[2051002000-PK-000.pdf](#)

### 3D Models and Design Files

[STEP AP242](#)

[SOLIDWORKS](#)

[Creo](#)

[Symbol and Footprint \(Multi-Format\)](#)

### Specifications


[2204090000-AS-000.pdf](#)

[2204090000-PS-000.pdf](#)

---

## Product Environment Compliance

### Compliance

GADSL/IMDS	Not Relevant
China RoHS	 per SJ/T 11365-2006
EU ELV	Not Relevant
Low-Halogen Status	Low-Halogen per IEC 61249-2-21
REACH SVHC	Not Contained per D(2025)6375-DC (05 Nov 2025)
EU RoHS	Compliant per EU 2015/863

[Compliance Statements](#)

- EU RoHS
- REACH SVHC
- Low-Halogen

Industry Documents

- IPC 1752A Class C
- IPC 1752A Class D
- Molex Product Compliance Declaration
- IEC-62474
- chemSHERPA (xml)

Substances of Interest

- PFAS

EU RoHS Certificate of Compliance

Additional Product Compliance Information

## Part Details

### General

Status	Active
Category	PCB Headers and Receptacles
Series	205100
Description	Sentrality 8.00mm Right-Angle Socket Assembly, 3.80mm Solder Tails, with +/-1.00mm Self-alignment Capability, Tray
Application	Board-to-Board, Busbar-to-Board, Power
Comments	Current and voltage performances are dependent upon application variables.
Component Type	PCB Receptacle
Product Name	Sentrality
UPC	196823680120

### Agency

UL	E29179
----	--------

### Electrical

Current - Maximum per Contact	200.0A
Voltage - Maximum	1000V

## Physical

Breakaway	No
Circuits (Loaded)	1
Circuits (maximum)	1
Diameter	8.00mm
Durability (mating cycles max)	200
First Mate / Last Break	No
Glow-Wire Capable	No
Guide to Mating Part	Yes
Height Above Board	25.00mm
Material - Metal	Copper Alloy
Material - Plating Mating	Gold
Material - Plating Termination	Silver
Mating Orientation	Side-entry
Net Weight	28.693/g
Number of Rows	1
Orientation	Right Angle
Packaging Type	Tray
PCB Retention	None
Pitch - Mating Interface	N/A
Polarized to Mating Part	No
Polarized to PCB	Yes
Temperature Range - Operating	-40° to +125°C
Termination Interface Style	Pin-in-Paste SMT

---

## Mates With / Use With

### Mates with Part(s)

Description	Part Number
Sentrality Pins	<u>203263</u>