

# CMD69423P-30NF ✓ ACTIVE



## CMD Series

TE Internal #: CMD69423P-30NF

Dome/Puck Antenna, Multi Band, 5G / CBRS / Cat-M/NB-IoT, External Mount, Wall/Ceiling Mount, N-type, Omnidirectional, Single Port, CMD Series

[View on TE.com >](#)

### Antennas



Communication Protocol: 5G, Cat-M/NB-IoT, CBRS, Cellular, DAS

Mounting Location: External

Mounting Type: Wall/Ceiling Mount

Frequency Category: 698 – 4200

Antenna Type: Dome/Puck

## Features

### Product Type Features

Antenna Termination	N-type
Antenna Product Type	Antenna

### Configuration Features

Mounting Location	External
Antenna Type	Dome/Puck
Band Type	Multi Band
Port Configuration	Single Port

### Electrical Characteristics

Antenna Operation	Passive
-------------------	---------

### Signal Characteristics

Frequency Band	698 – 806 MHz, 698 – 960 MHz, 824 – 960 MHz, 1300 – 4200 MHz, 1350 – 1550 MHz, 1690 – 2180 MHz, 2300 – 2700 MHz, 3300 – 4200 MHz
Frequency Category	698 – 4200
Peak Gain	0 < 3 dBi

### Mechanical Attachment

Mounting Type	Wall/Ceiling Mount
---------------	--------------------



**Operation/Application**

Antenna Environment	Indoor
Wireless Standard	Cellular
Directionality	Omnidirectional

**Industry Standards**

Communication Protocol	5G, Cat-M/NB-IoT, CBRS, Cellular, DAS
Primary Application	5G, Cat-M/NB-IoT, CBRS, Cellular, DAS

**Product Compliance**

[For compliance documentation, visit the product page on TE.com>](#)

EU RoHS Directive 2011/65/EU	Compliant with Exemptions
EU ELV Directive 2000/53/EC	Not Yet Reviewed
China RoHS 2 Directive MIIT Order No 32, 2016	未针对中国 RoHS 符合性进行审核 Not reviewed for China RoHS compliance
EU REACH Regulation (EC) No. 1907/2006	Current ECHA Candidate List: FEB 2026 (253) Not Yet Reviewed
Halogen Content	BFR/CFR/PVC Free, but Br/Cl >900 ppm in other sources.
Solder Process Capability	Not reviewed for solder process capability

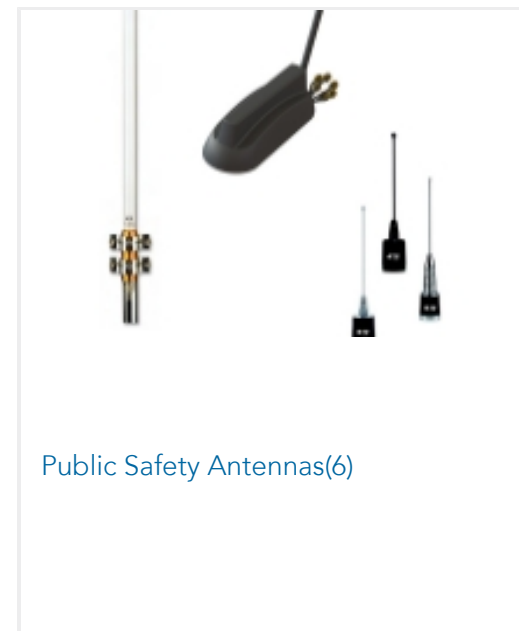
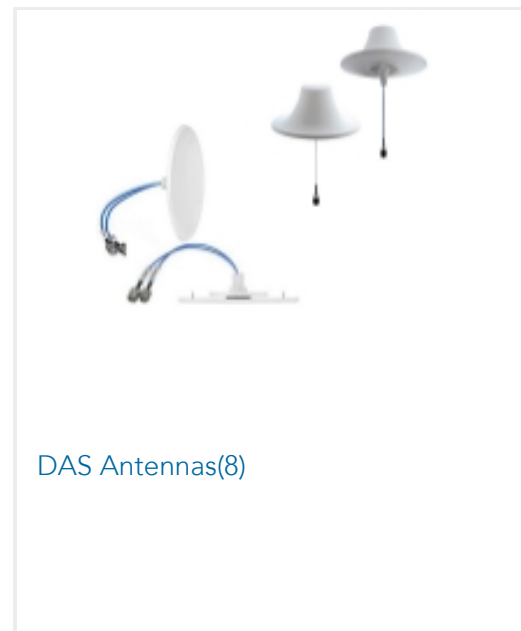
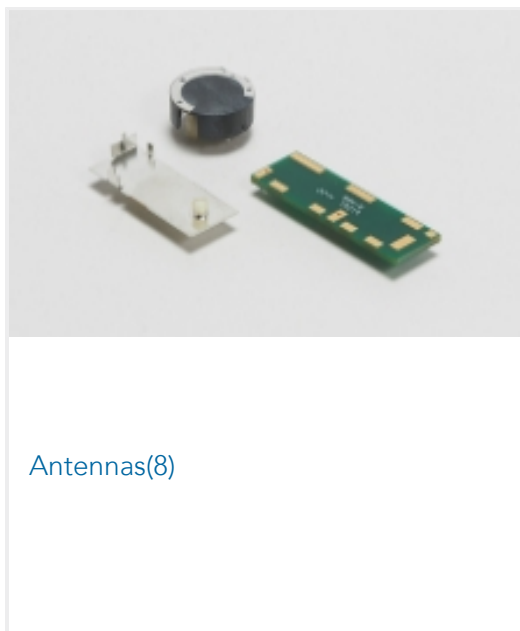
Product Compliance Disclaimer

This information is provided based on reasonable inquiry of our suppliers and represents our current actual knowledge based on the information they provided. This information is subject to change. The part numbers that TE has identified as EU RoHS compliant have a maximum concentration of 0.1% by weight in homogenous materials for lead, hexavalent chromium, mercury, PBB, PBDE, DBP, BBP, DEHP, DIBP, and 0.01% for cadmium, or qualify for an exemption to these limits as defined in the Annexes of Directive 2011/65/EU (RoHS2). Finished electrical and electronic equipment products will be CE marked as required by Directive 2011/65/EU. Components may not be CE marked. Additionally, the part numbers that TE has identified as EU ELV compliant have a maximum concentration of 0.1% by weight in homogenous materials for lead, hexavalent chromium, and mercury, and 0.01% for cadmium, or qualify for an exemption to these limits as defined in the Annexes of Directive 2000/53/EC (ELV). Regarding the REACH Regulations, TE's information on SVHC in articles for this part number is still based on the European Chemical Agency (ECHA) 'Guidance on requirements for substances in articles' (Version: 2, April 2011), applying the 0.1% weight on weight concentration threshold at the finished product level. TE is aware of the European Court of Justice ruling of September 10th, 2015 also known as O5A (Once An Article Always An Article) stating that, in case of 'complex object', the threshold for a SVHC must be applied to both the product as a whole and simultaneously to each of the articles forming part of its composition. TE has evaluated this ruling based on the new ECHA "Guidance on requirements for substances in articles" (June 2017, version 4.0) and will be updating its statements accordingly.

**Compatible Parts**



Also in the Series | **CMD Series**



Customers Also Bought



Documents

**Product Drawings**

Omni,Dband,300mm,NF 698-4200MHz,LoPIM

English

**Datasheets & Catalog Pages**

2-Port MIMO Ceiling Mount Antenna 698-960 MHz/1300-4200 MHz

English



---

[Agency Approvals](#)

[CE Declaration of Conformity](#)

English