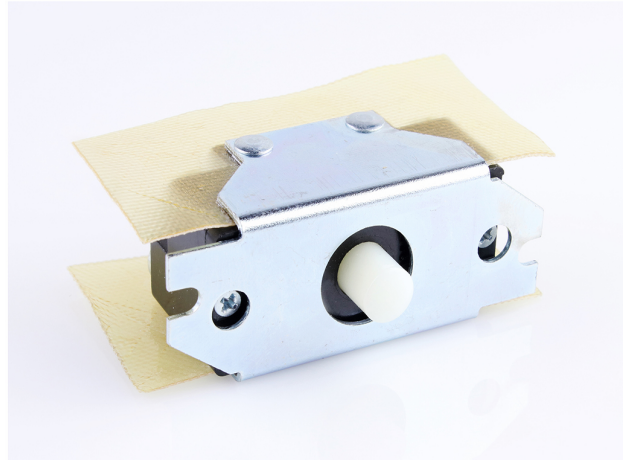




Part Number : 1301280100
Product Description : Super-Safeway Switch Replacement, Single Speed Momentary
Series Number : 130128
Status : Active
Product Category : Push Button Products
Engineering Number : 4020



Product Environment Compliance

Compliance

China RoHS	Not Reviewed
EU ELV	Not Reviewed
Low-Halogen Status	Not Reviewed
REACH SVHC	Not Reviewed
EU RoHS	Not Reviewed

Multiple Part Product Compliance Statements

- Eu RoHS
- REACH SVHC
- Low-Halogen

Multiple Part Industry Compliance Documents

- IPC 1752A Class C
- IPC 1752A Class D
- Molex Product Compliance Declaration
- IEC-62474
- chemSHERPA (xml)

EU RoHS Certificate of Compliance

Part Details

General

Status	Active
--------	--------

Category	Push Button Products
Series	130128
Description	Super-Safeway Switch Replacement, Single Speed Momentary
Accessory / Replacement Type	One Speed-Momentary Switch
Enclosure Rating	N/A
Product Name	Super-Safeway
Type	Replacement Part
UPC	78678875414

Electrical

Voltage - Maximum	250V
-------------------	------

Physical

Cord Diameter	N/A
Cord Grip Body Size	N/A
Emergency Stop	No
Material - Body	N/A
Net Weight	55.791/g
Number of Speeds	Single
Packaging Type	Carton