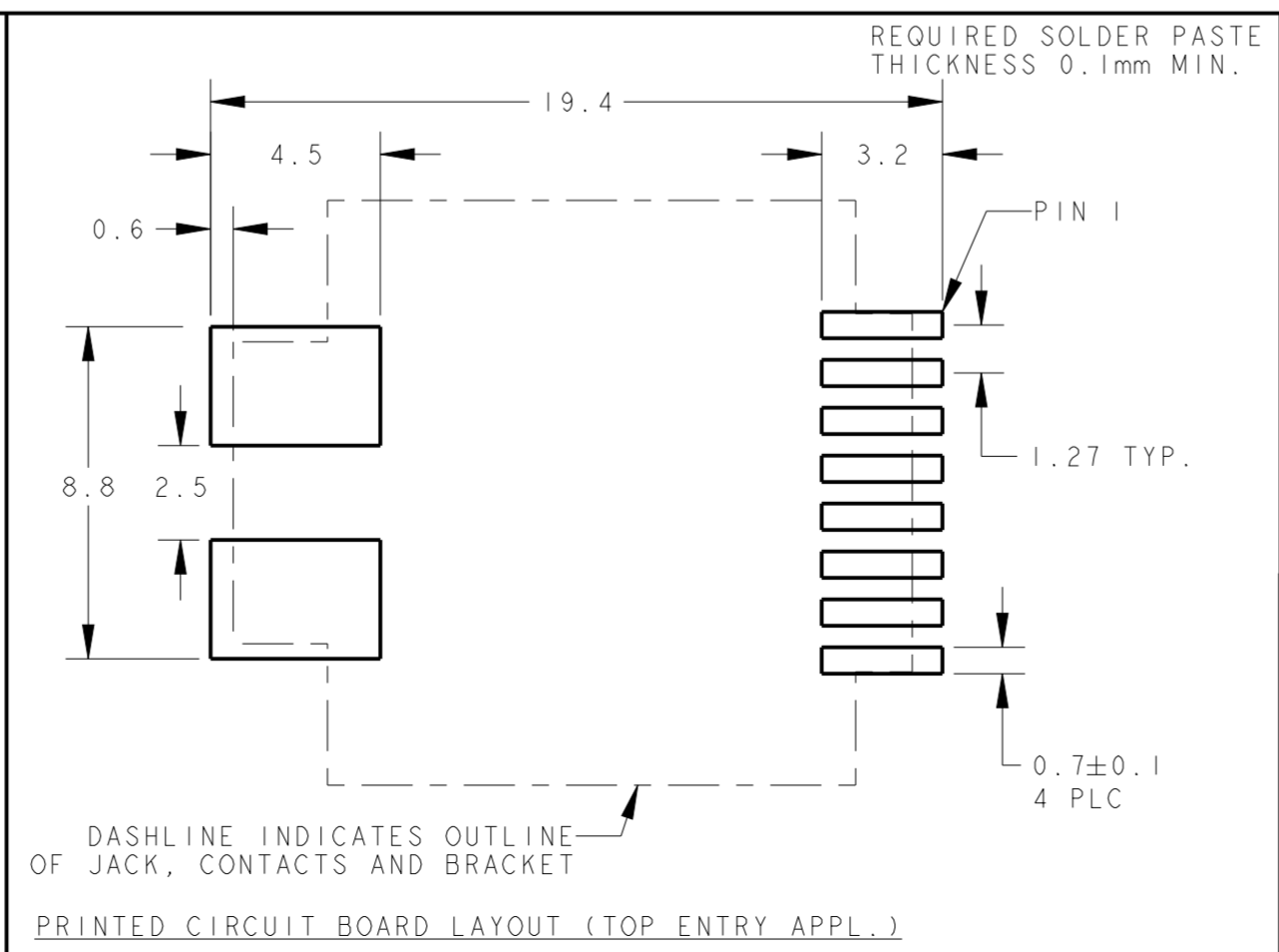
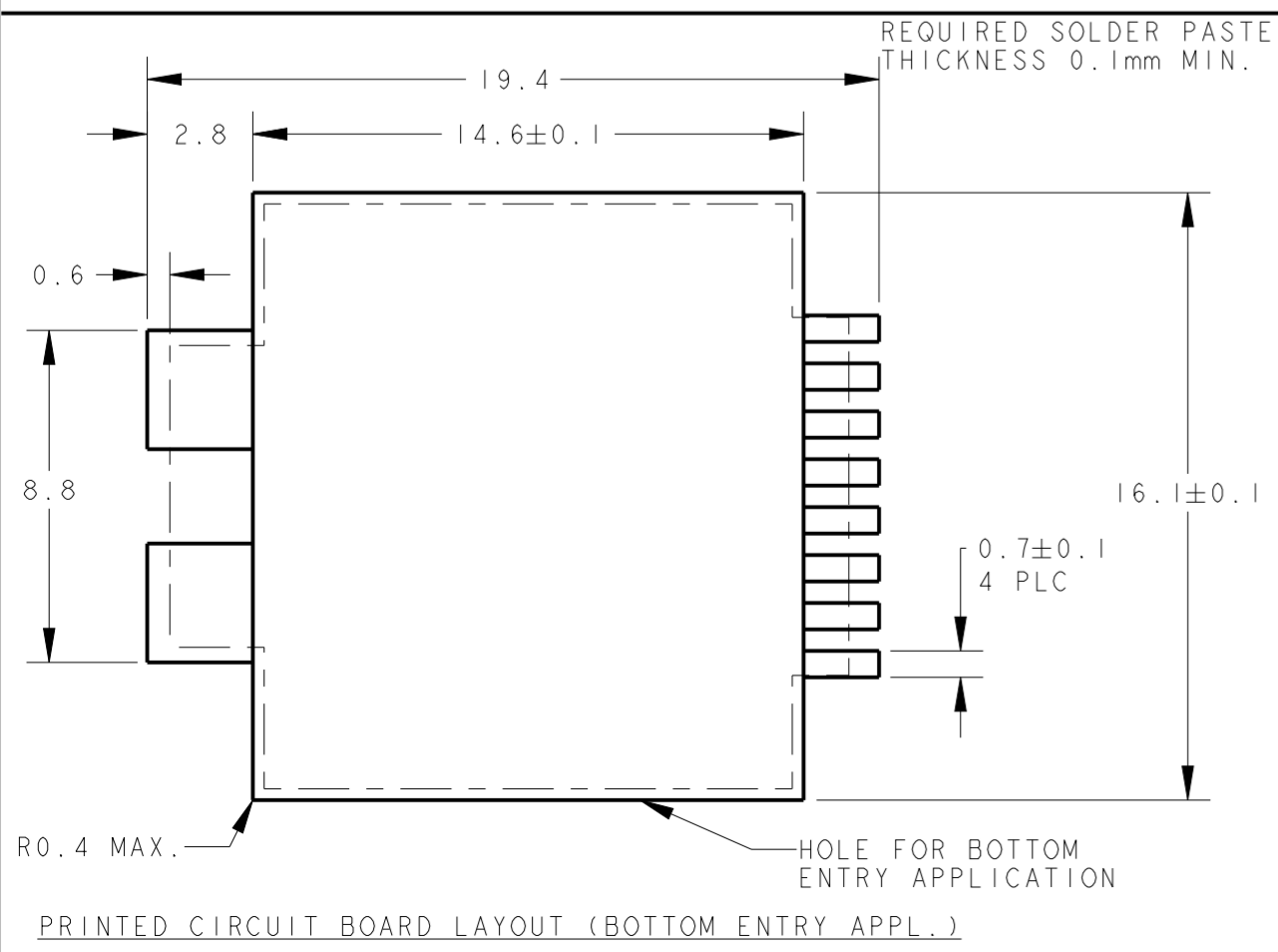
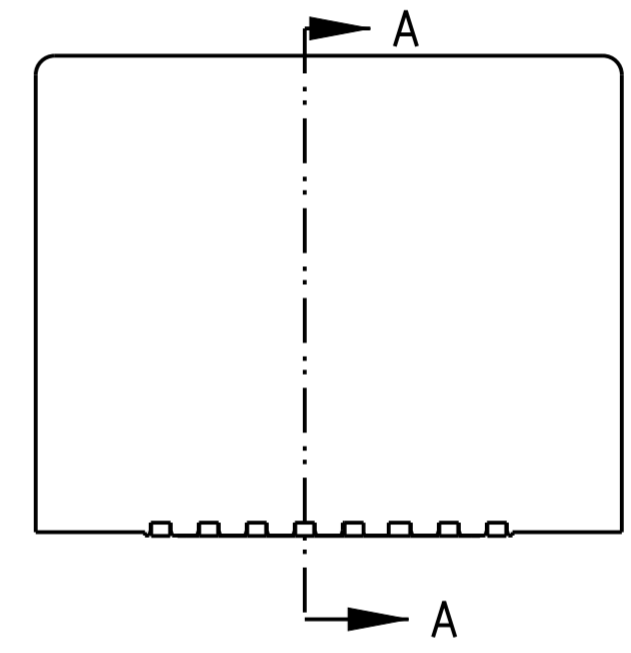
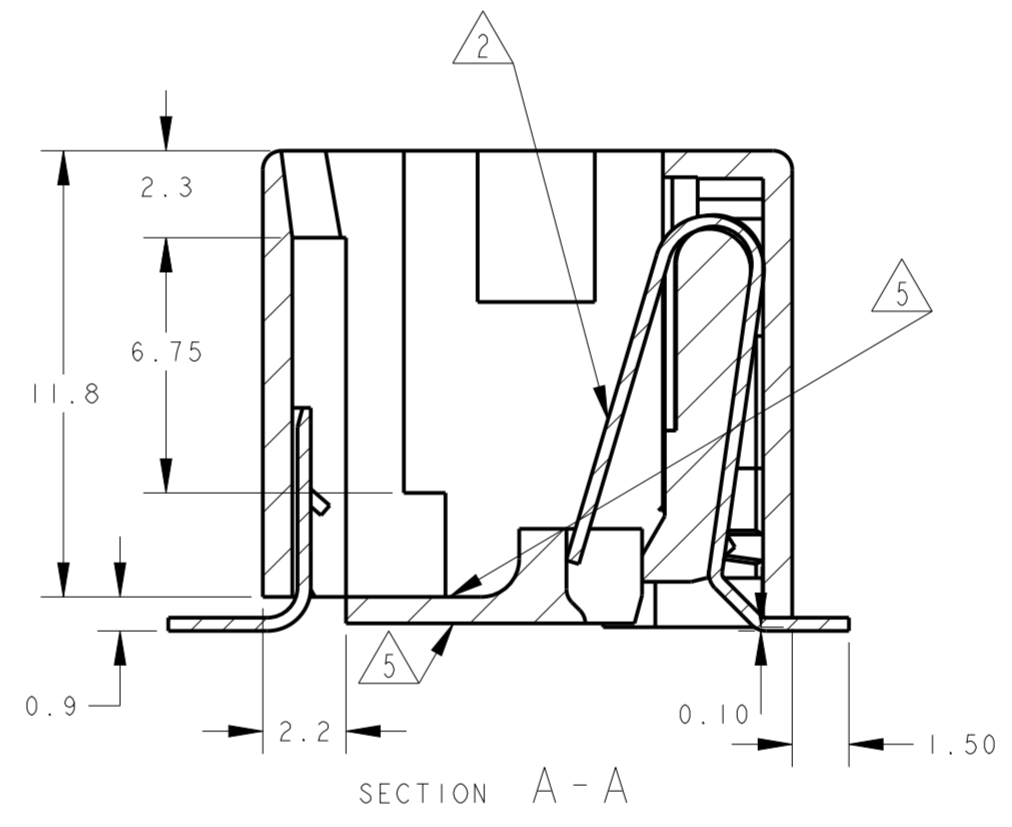
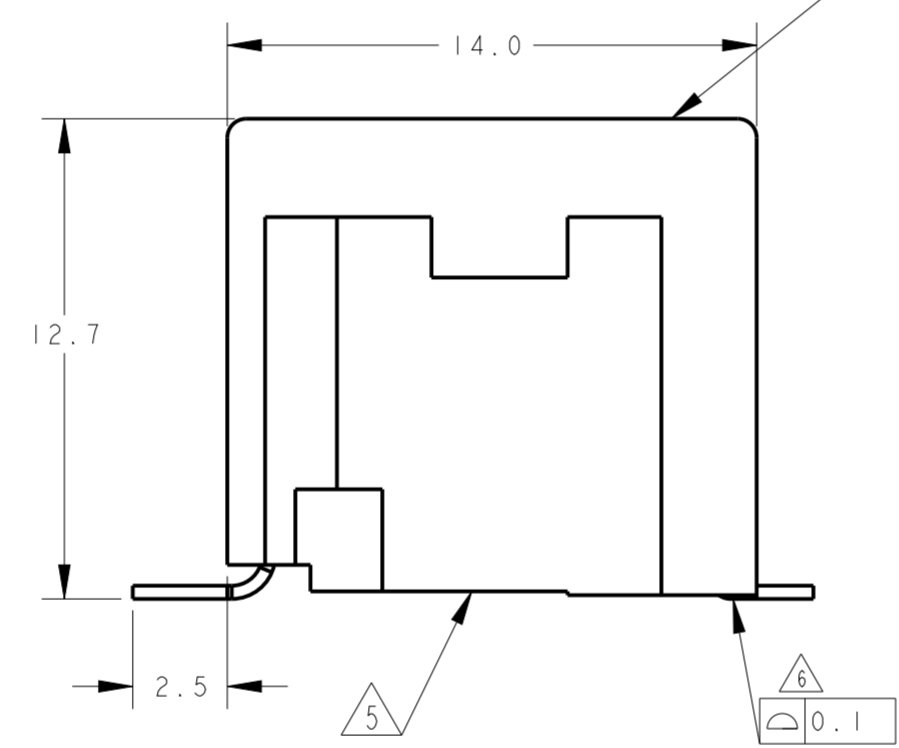
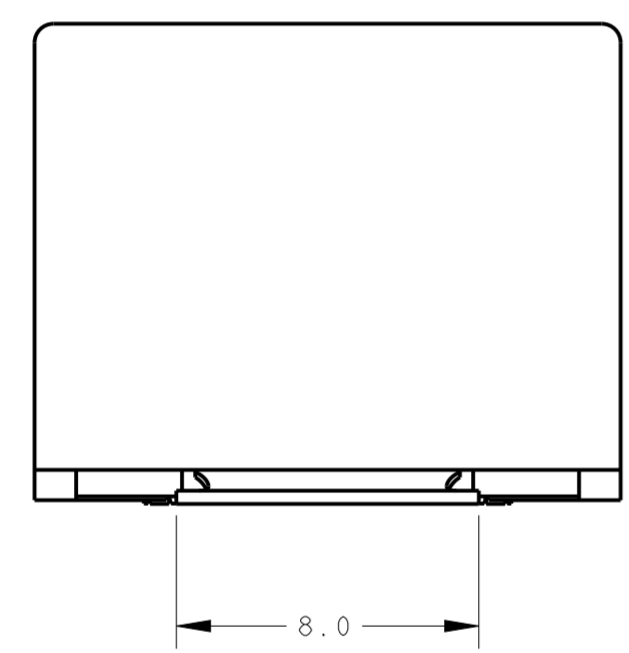
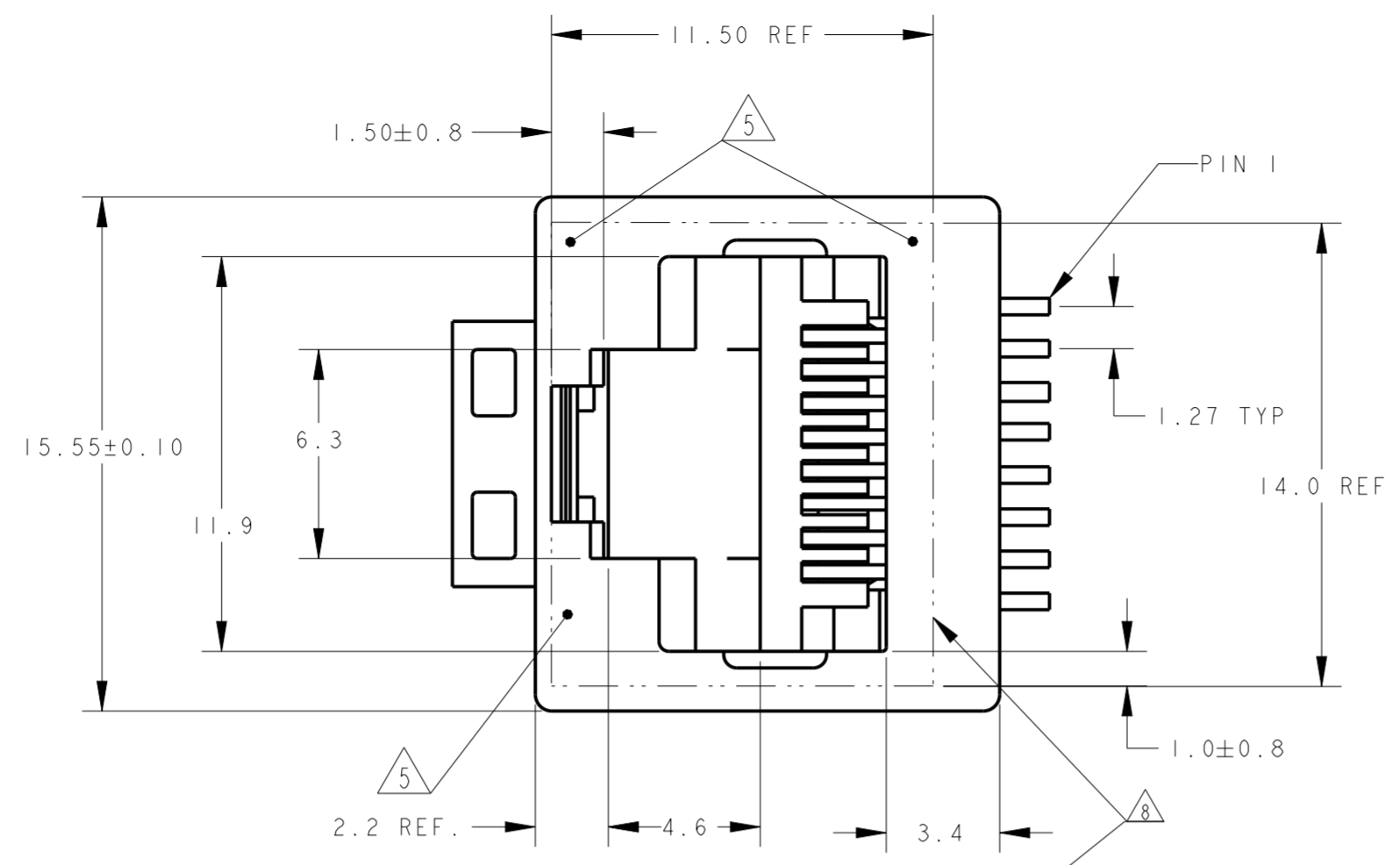
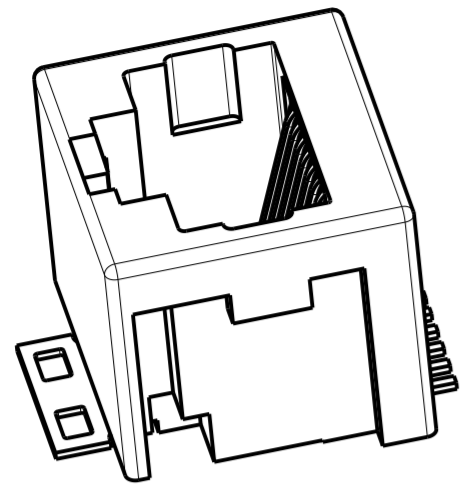


THIS DRAWING IS UNPUBLISHED. RELEASED FOR PUBLICATION
 © COPYRIGHT - TE CONNECTIVITY ALL RIGHTS RESERVED.

LOC		DIST		REVISIONS			
P	LTR	DESCRIPTION	DATE	DWN	APVD		
	A	INITIAL RELEASE	27NOV2017	AD	SH		
	A1	ECO-20-012530	10AUG2020	RR	SH		

NOTES:

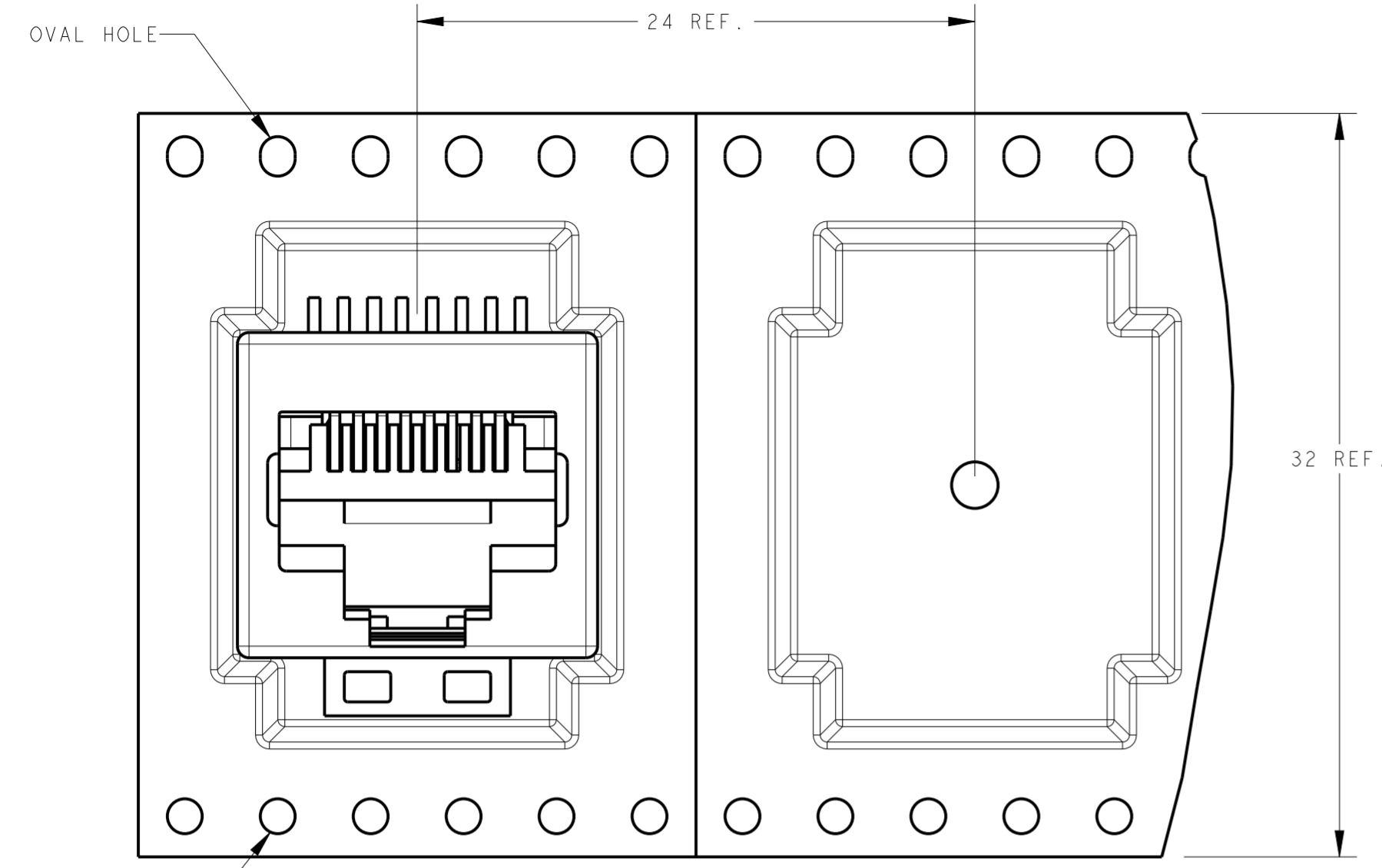
- 1 TOLERANCES UNLESS OTHERWISE SPECIFIED: ± 0.15 .
- 2 CONTACT PLATING:
OVERALL: Ni 1.27 μ m MIN. ALL OVER THE CONTACTS
SOLDER ZONE: Sn 3.5-5.0 μ m ON THE SOLDER ZONE OF THE CONTACT
MATING ZONE: PLATING CONFIRMS TO PRODUCT REQUIREMENTS AS PER SPECIFICATION 108-19117
- 3 CONTACT AND BRACKET MATERIAL:
CONTACTS: PHOSPHOR BRONZE
SOLDER BRACKET: TINPLATED BRASS WITH NICKEL UNDERLAYER.
- 4 THIS JACK CAN ALSO BE APPLIED HANGING THROUGH A HOLE, IN A PRINTED CIRCUIT BOARD. SEE LEFT PCB LAYOUT.
- 5 SURFACE CAN BE USED FOR PICKING THE MODULAR JACK WITH, TYPE 11 SMD MACHINE.
- 6 MEASURED AT BRACKET AND CONTACT, MAX. 0.10mm.
- 7 TAPE AND REEL PACKAGING ACCORDING TO EIA 481-3 SPECIFICATIONS.
- 8 INCLUDES KAPTON TAPE (10mm x 14mm) ON TOP SURFACE FOR PICK AND PLACE UNIT
- 9 HOUSING MATERIAL:
HOUSING: 30% G.F. LCP(HALOGEN FREE), COLOR BLACK, UL 94V-0.



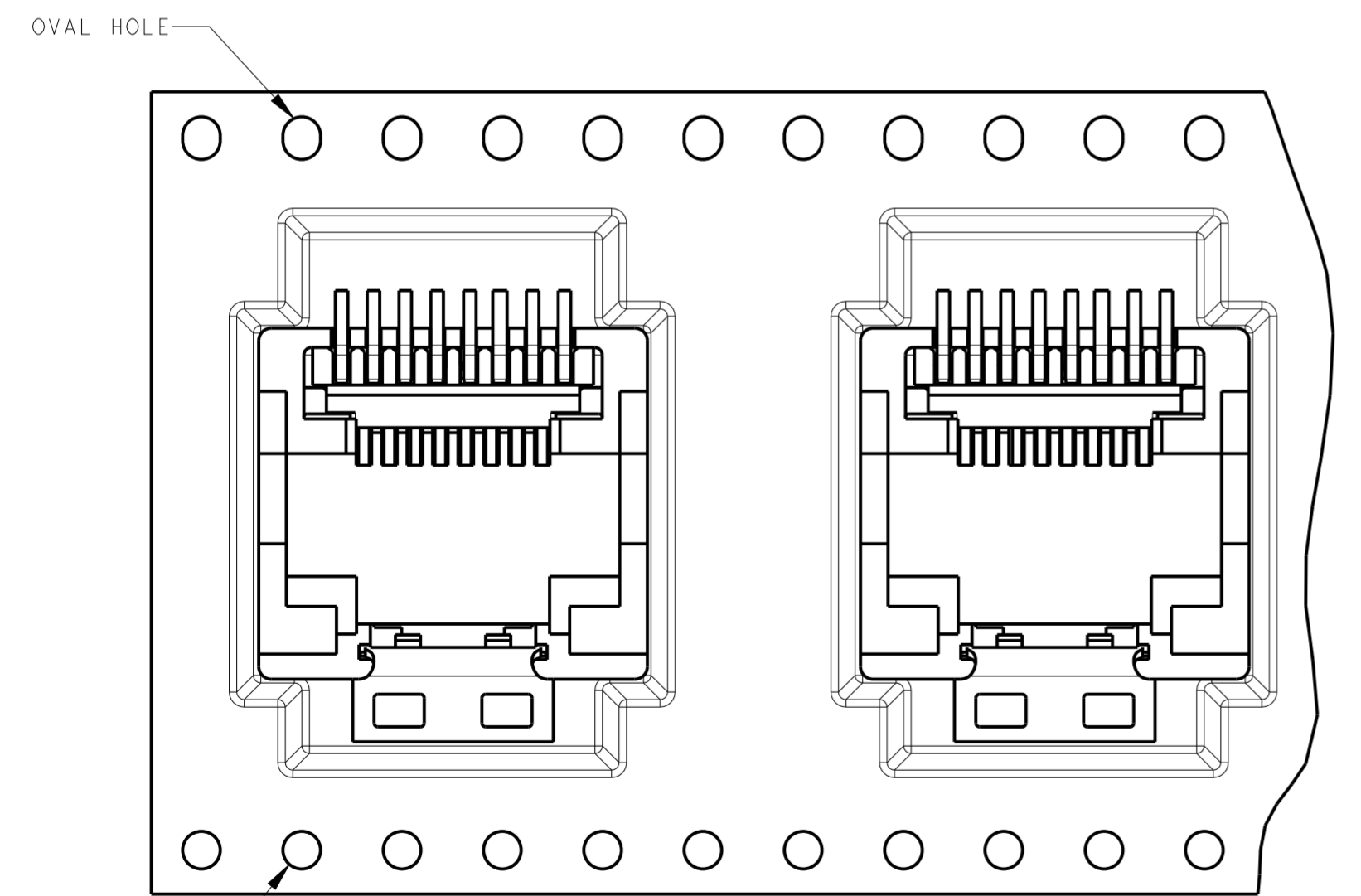
8 POS./8 CONTACT		250PCS ON $\varnothing 360$ mm OD REEL TOP ENTRY ORIENTATION PER DETAIL B1 WITH KAPTON TAPE FOR PICK AND PLACING		1-2324574-6	
REMARKS		PACKAGING		PART NUMBER	
THIS DRAWING IS A CONTROLLED DOCUMENT.		DWN	14SEP2017	TE Connectivity	
DIMENSIONS: mm		LEO LI	14SEP2017		
TOLERANCES UNLESS OTHERWISE SPECIFIED:		CHK	SEAN HAN		
0 PLC \pm 1 PLC \pm 2 PLC \pm 3 PLC \pm 4 PLC \pm ANGLES \pm FINISH		APVD	SEAN HAN		
MATERIAL		PRODUCT SPEC		NAME	
SEE NOTE 3 -		108-19117		INVERTIBLE MODULAR JACK, 8 POSITION SURFACE MOUNT APPLICATION	
SEE NOTE 2 -		APPLICATION SPEC		SIZE	
		114-19041		CAGE CODE	
		WEIGHT		DRAWING NO	
		2.1 gr		RESTRICTED TO	
		CUSTOMER DRAWING		A200779C-2324574	
		SCALE		SHEET	
		5:1		1 OF 2	
				REV A1	

THIS DRAWING IS UNPUBLISHED. RELEASED FOR PUBLICATION
 © COPYRIGHT - TE CONNECTIVITY ALL RIGHTS RESERVED.

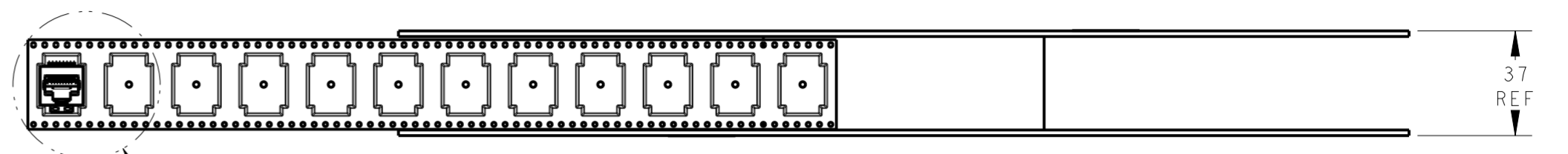
LOC	DIST	REVISIONS			
P	LTR	DESCRIPTION	DATE	DWN	APVD
IR	-	SEE SHEET 1	-	-	-



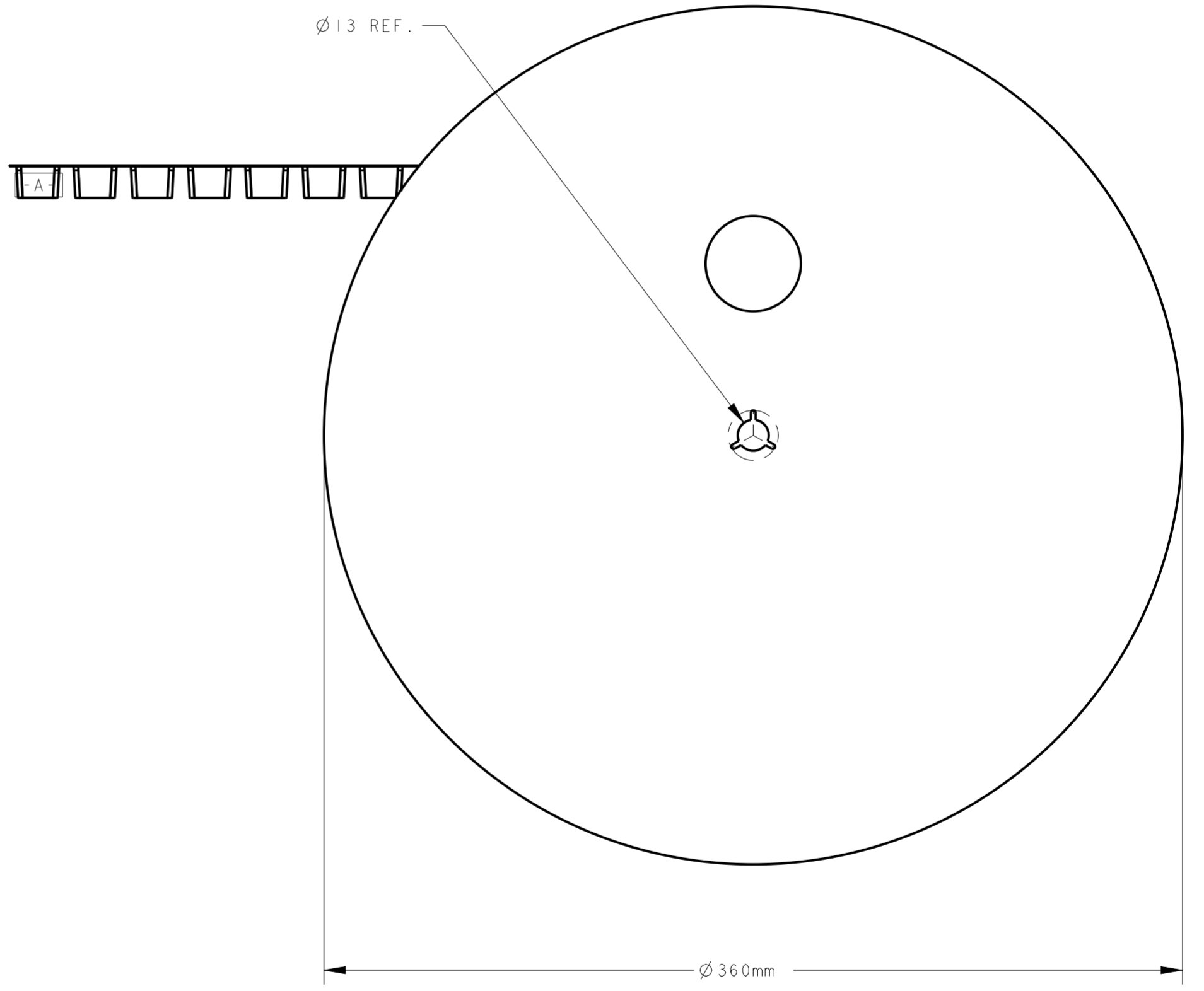
TOP ENTRY ORIENTATION.
 DETAIL B1
 SCALE 4:1




BOTTOM ENTRY ORIENTATION.
 DETAIL B2
 SCALE 4:1



SEE DETAIL B1 & B2



THIS DRAWING IS A CONTROLLED DOCUMENT.		DWN LEO LI 14SEP2017	 TE Connectivity		
DIMENSIONS: mm		CHK SEAN HAN 14SEP2017			NAME
TOLERANCES UNLESS OTHERWISE SPECIFIED:		APVD SEAN HAN 14SEP2017			INVERTIBLE MODULAR JACK, 8 POSITION SURFACE MOUNT APPLICATION
0 PLC ± 1 PLC ± 2 PLC ± 3 PLC ± 4 PLC ± ANGLES ± FINISH		PRODUCT SPEC 108-19117			RESTRICTED TO
MATERIAL		APPLICATION SPEC 114-19041	SIZE A20779	CAGE CODE C-2324574	
		WEIGHT 2.1 gr	DRAWING NO C-2324574	REV A1	
		CUSTOMER DRAWING	SCALE 5:1	SHEET 2 OF 2	