



Part Number : [2001220112](#)

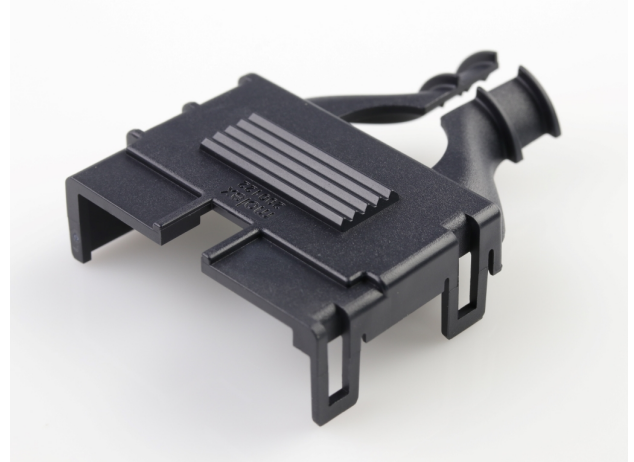
Product Description : Mega-Fit Receptacle Backshell, Dual Row, Glow-Wire Capable, 12 Circuits

Series Number : 200122

Status : Active

Product Category : Connector Accessories

Engineering Number : F4068.06-P28



Documents & Resources

Drawings

[2001220112_sd.pdf](#)

3D Models and Design Files


[2001220112_stp.zip](#)

Specifications

[AS-76823-100-001.pdf](#)

Product Environment Compliance

Compliance

GADSL/IMDS	Not Relevant
China RoHS	
EU ELV	Not Relevant
Low-Halogen Status	Not Low-Halogen per IEC 61249-2-21
REACH SVHC	Not Contained per D(2024)6225-DC (07 Nov 2024)
EU RoHS	Compliant per EU 2015/863

Multiple Part Product Compliance Statements

- Eu RoHS
- REACH SVHC
- Low-Halogen

Multiple Part Industry Compliance Documents

- IPC 1752A Class C
- IPC 1752A Class D
- Molex Product Compliance Declaration
- IEC-62474
- chemSHERPA (xml)

EU RoHS Certificate of Compliance

Part Details

General

Status	Active
Category	Connector Accessories
Series	200122
Description	Mega-Fit Receptacle Backshell, Dual Row, Glow-Wire Capable, 12 Circuits
Component Type	Backshell
Product Name	Mega-Fit
UPC	889056291156

Physical

Circuits (Loaded)	12
Circuits (maximum)	12
Color - Resin	Black
Lock to Mating Part	Yes
Material - Resin	Nylon
Net Weight	4.620/g
Number of Rows	2
Packaging Type	Bag
Temperature Range - Operating	-40° to +105°C

Solder Process Data

Lead-Free Process Capability	N/A
------------------------------	-----

Use with Part(s)

Description	Part Number
-------------	-------------

Mega-Fit Dual Row Receptacle Housings	<u>170001</u>
--	---------------

This document was generated on Feb 13, 2025