



Part Number : [1731070753](#)

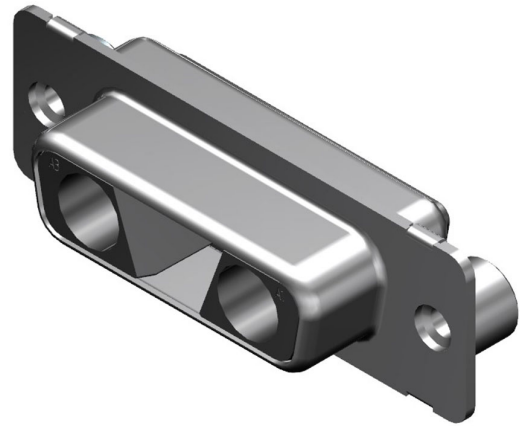
Product Description : FCT Mixed Layout D-Sub Housing, Female, Tin-plated Shell, Polarized, #4-40 Self-Locking Clinch Nut, 3 Circuits Unloaded, Black Insulator

Series Number : 173107

Status : Active

Product Category : D-Sub Connectors

Engineering Number : FTS3W3SC-K121




Documents & Resources

Drawings

[1731070753_sd.pdf](#)

Product Environment Compliance

Compliance

| | |
|--------------------|---|
| GADSL/IMDS | Not Relevant |
| China RoHS |  |
| EU ELV | Not Relevant |
| Low-Halogen Status | Not Reviewed per IEC 61249-2-21 |
| REACH SVHC | Contains Lead per D(2021)4569-DC (8 July 2021) |
| EU RoHS | Compliant with Exemption 6(a) per EU 2015/863 |

Multiple Part Product Compliance Statements

- Eu RoHS
- REACH SVHC
- Low-Halogen

Multiple Part Industry Compliance Documents

- IPC 1752A Class C
- IPC 1752A Class D
- Molex Product Compliance Declaration
- IEC-62474

Part Details

General

| | |
|--------------|--|
| Status | Active |
| Category | D-Sub Connectors |
| Series | 173107 |
| Description | FCT Mixed Layout D-Sub Housing, Female, Tin-plated Shell, Polarized, #4-40 Self-Locking Clinch Nut, 3 Circuits Unloaded, Black Insulator |
| IP Rating | IP20 |
| Magnetic | Yes |
| Product Name | FCT Products |
| Type | Mixed Layout |
| UPC | 191130102310 |

Electrical

| | |
|----------|-----|
| Shielded | Yes |
|----------|-----|

Physical

| | |
|--------------------|-----------|
| Circuits (Loaded) | 0 |
| Circuits (maximum) | 3 |
| Color - Resin | Black |
| Gender | Female |
| Material - Resin | PBT |
| Material - Shell | Steel |
| Net Weight | 6.700/g |
| Number of Rows | 1 |
| Packaging Type | Carton |
| Panel Mount | Rear |
| Panel Mount Method | Thread-In |
| PCB Locator | No |
| PCB Retention | None |
| Plating - Shell | Tin |

| | |
|-------------------------------|----------------|
| Polarized to Mating Part | Yes |
| Ports | 1 |
| Temperature Range - Operating | -55° to +130°C |
| Waterproof / Dustproof | No |
| Waterproof / Dustproof Type | IP20 |

Mates With / Use With

Mates with Part(s)

| Description | Part Number |
|-------------|--|
| Mates With | FCT Mixed Layout D-Sub, Size 2, 3W3C, Plug |

Use with Part(s)

| Description | Part Number |
|-------------|--|
| Use With | FCT Coaxial, High Power, High Voltage, or Pneumatic Contacts |