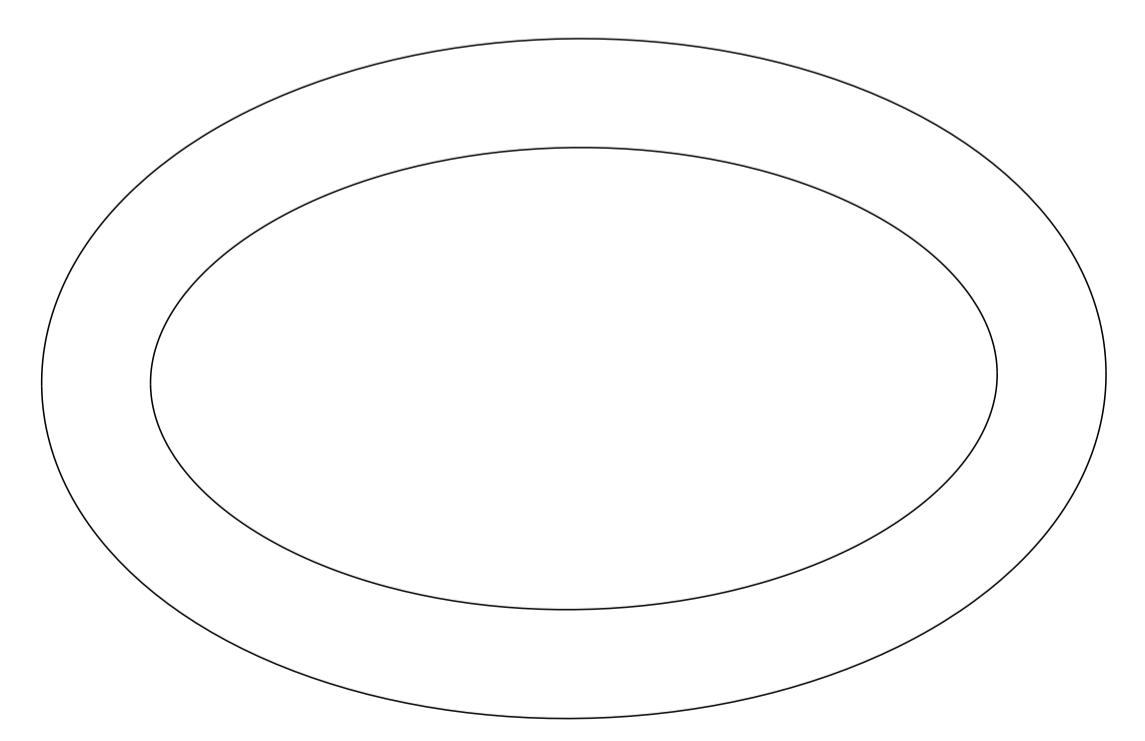
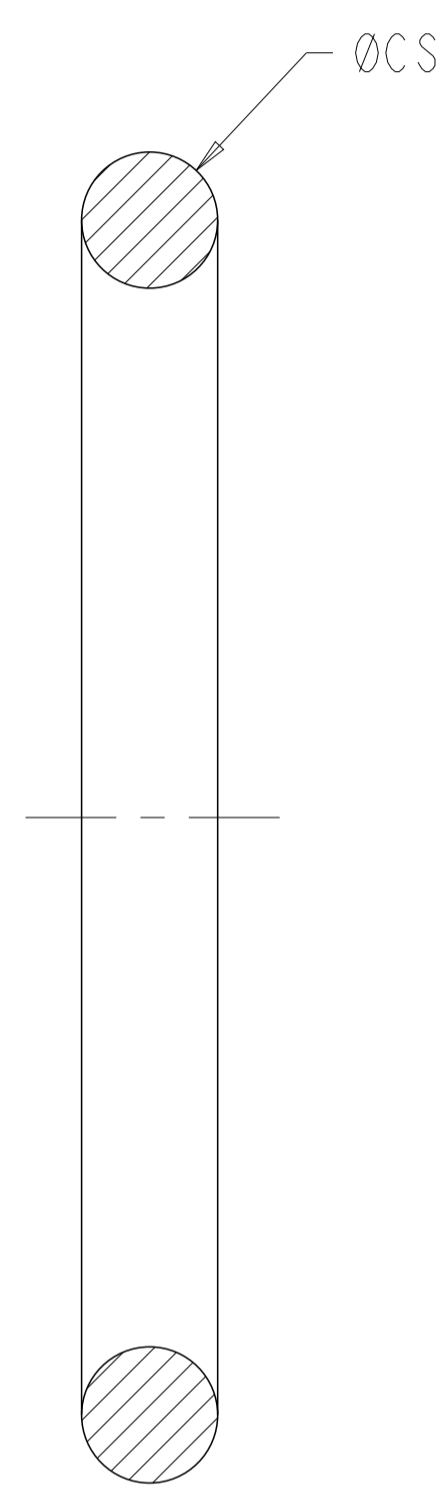
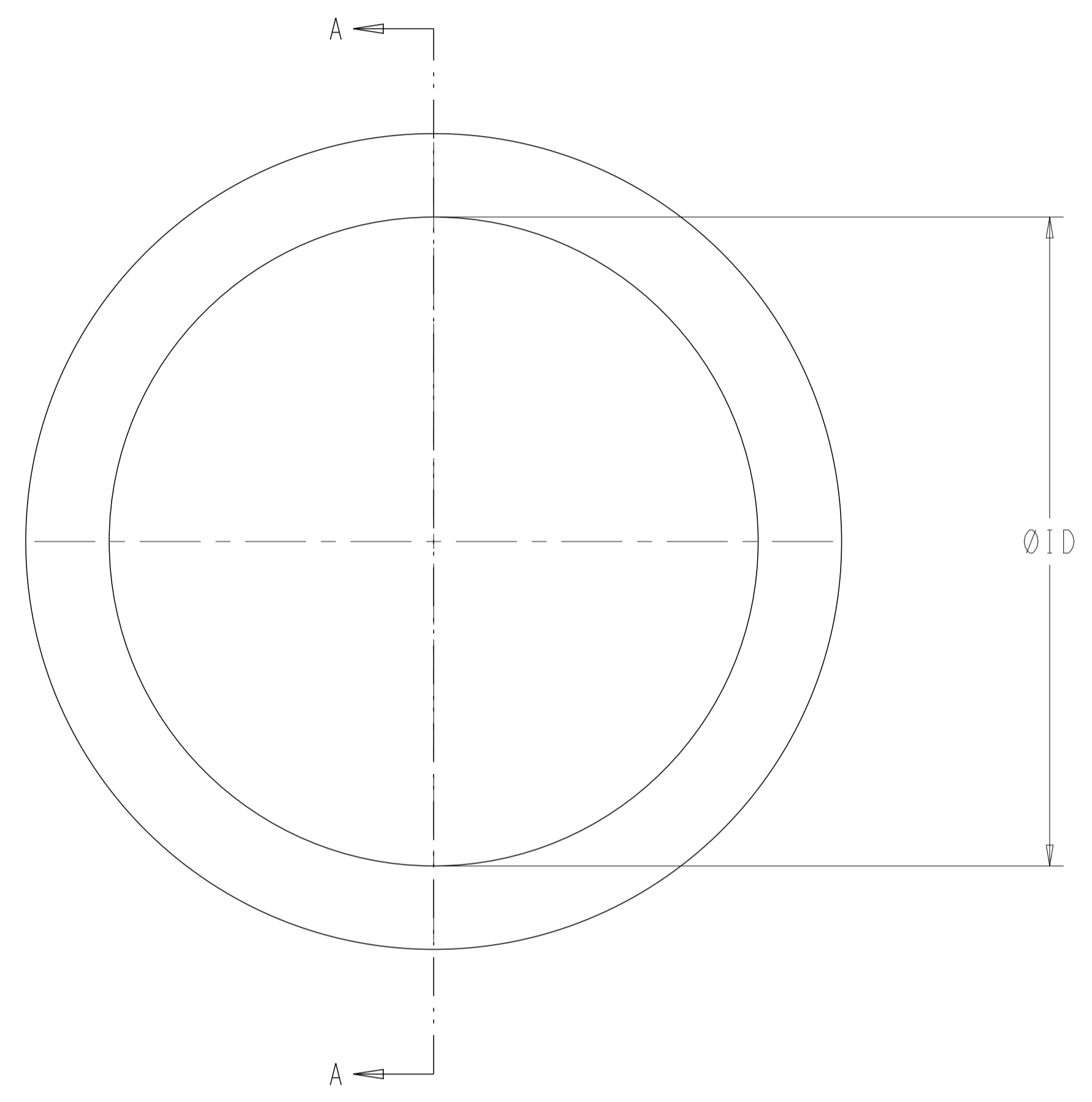


MATERIAL SPECIFIC DATA TABLE

TEST SPECIFICATION / MATERIAL CODE	SILICONE NICKEL GRAPHITE (SNG)	SILICONE SILVER ALUMINIUM (SSA)	FLUOROSILICONE NICKEL GRAPHITE (FNG)	FLUOROSILICONE SILVER ALUMINIUM (FSA)
RECOMMENDED OPERATING TEMPERATURE RANGE (°C)	-55 to 160	-55 to 160	-55 to 160	-55 to 160
SPECIFIC GRAVITY ± 13%	2.000	2.000	2.200	2.000
SHORE A HARDNESS ± 7	65	65	65	70
MAXIMUM VOLUME RESISTIVITY (Ω.CM)	0.05	0.008	0.05	0.012



ISOMETRIC VIEW (NTS)

- NOTE:
- ① PART NUMBERS RELATE TO MIL-DTL-26482.
  - ② PART NUMBERS RELATE TO MIL-DTL-38999.
  - ③ PART NUMBERS RELATE TO MIL-DTL-81511.

REVISIONS					
P	LTN	DESCRIPTION	DATE	OWN	APVD
A2		ADDED MIL SPEC. MIL-DTL-81511	02DEC2025	CK	SB

①	②	③	FSA	25	LIGHT GREEN	2.6±0.13	47.3±0.38	98-22044-1	2430220-1
			FSA	25	LIGHT GREEN	2.6±0.13	47.3±0.38	98-22044	2430136-1
			FSA	23/24	LIGHT GREEN	2.6±0.13	44.1±0.38	98-22043-1	2430219-1
			FSA	23/24	LIGHT GREEN	2.6±0.13	44.1±0.38	98-22043	2430135-1
			FSA	21/22	LIGHT GREEN	2.6±0.13	40.9±0.38	98-22042-1	2430218-1
			FSA	21/22	LIGHT GREEN	2.6±0.13	40.9±0.38	98-22042	2430134-1
			FSA	19/20	LIGHT GREEN	2.6±0.13	37.8±0.25	98-22041-1	2430217-1
			FSA	19/20	LIGHT GREEN	2.6±0.13	37.8±0.25	98-22041	2430133-1
			FSA	17/18	LIGHT GREEN	1.8±0.1	34.7±0.25	98-22040-1	2430216-1
			FSA	17/18	LIGHT GREEN	1.8±0.1	34.7±0.25	98-22040	2430132-1
			FSA	15/16	LIGHT GREEN	1.8±0.1	31.5±0.25	98-22039-1	2430215-1
			FSA	15/16	LIGHT GREEN	1.8±0.1	31.5±0.25	98-22039	2430131-1
			FSA	13/14	LIGHT GREEN	1.8±0.1	28.3±0.25	98-22038-1	2430214-1
			FSA	13/14	LIGHT GREEN	1.8±0.1	28.3±0.25	98-22038	2430130-1
			FSA	11/12	LIGHT GREEN	1.8±0.1	25.1±0.25	98-22037-1	2430213-1
			FSA	11/12	LIGHT GREEN	1.8±0.1	25.1±0.25	98-22037	2430129-1
			FSA	9/10	LIGHT GREEN	1.8±0.1	20.4±0.25	98-22036-1	2430212-1
			FSA	9/10	LIGHT GREEN	1.8±0.1	20.4±0.25	98-22036	2430128-1
			FSA	8	LIGHT GREEN	1.8±0.1	17.2±0.25	98-22035-1	2430211-1
			FSA	8	LIGHT GREEN	1.8±0.1	17.2±0.25	98-22035	2430127-1
			FSA	6	LIGHT GREEN	1.8±0.1	14.0±0.25	98-22034-1	2430210-1
			FSA	6	LIGHT GREEN	1.8±0.1	14.0±0.25	98-22034	2430126-1
			SSA	25	BEIGE	2.6±0.13	47.3±0.38	98-22033-1	2430209-1
			SSA	25	BEIGE	2.6±0.13	47.3±0.38	98-22033	2430125-1
			SSA	23/24	BEIGE	2.6±0.13	44.1±0.38	98-22032-1	2430208-1
			SSA	23/24	BEIGE	2.6±0.13	44.1±0.38	98-22032	2430124-1
			SSA	21/22	BEIGE	2.6±0.13	40.9±0.38	98-22031-1	2430207-1
			SSA	21/22	BEIGE	2.6±0.13	40.9±0.38	98-22031	2430123-1
			SSA	19/20	BEIGE	2.6±0.13	37.8±0.25	98-22030-1	2430206-1
			SSA	19/20	BEIGE	2.6±0.13	37.8±0.25	98-22030	2430122-1
			SSA	17/18	BEIGE	1.8±0.1	34.7±0.25	98-22029-1	2430205-1
			SSA	17/18	BEIGE	1.8±0.1	34.7±0.25	98-22029	2430121-1
			SSA	15/16	BEIGE	1.8±0.1	31.5±0.25	98-22028-1	2430204-1
			SSA	15/16	BEIGE	1.8±0.1	31.5±0.25	98-22028	2430120-1
			SSA	13/14	BEIGE	1.8±0.1	28.3±0.25	98-22027-1	2430203-1
			SSA	13/14	BEIGE	1.8±0.1	28.3±0.25	98-22027	2430119-1
			SSA	11/12	BEIGE	1.8±0.1	25.1±0.25	98-22026-1	2430202-1
			SSA	11/12	BEIGE	1.8±0.1	25.1±0.25	98-22026	2430118-1
			SSA	9/10	BEIGE	1.8±0.1	20.4±0.25	98-22025-1	2430201-1
			SSA	9/10	BEIGE	1.8±0.1	20.4±0.25	98-22025	2430117-1
			SSA	8	BEIGE	1.8±0.1	17.2±0.25	98-22024-1	2430200-1
			SSA	8	BEIGE	1.8±0.1	17.2±0.25	98-22024	2430116-1
			SSA	6	BEIGE	1.8±0.1	14.0±0.25	98-22023-1	2430199-1
			SSA	6	BEIGE	1.8±0.1	14.0±0.25	98-22023	2430115-1
			FNG	25	DARK GREEN	2.6±0.13	47.3±0.38	98-22022-100	2491969-1
			FNG	25	DARK GREEN	2.6±0.13	47.3±0.38	98-22022-1	2430198-1
			FNG	23/24	DARK GREEN	2.6±0.13	44.1±0.38	98-22021-1	2430197-1
			FNG	23/24	DARK GREEN	2.6±0.13	44.1±0.38	98-22021	2430113-1
			FNG	21/22	DARK GREEN	2.6±0.13	40.9±0.38	98-22020-1	2430196-1
			FNG	21/22	DARK GREEN	2.6±0.13	40.9±0.38	98-22020	2430112-1
			FNG	19/20	DARK GREEN	2.6±0.13	37.8±0.25	98-22019-1	2430195-1
			FNG	19/20	DARK GREEN	2.6±0.13	37.8±0.25	98-22019	2430111-1
			FNG	17/18	DARK GREEN	1.8±0.1	34.7±0.25	98-22018-1	2430194-1
			FNG	17/18	DARK GREEN	1.8±0.1	34.7±0.25	98-22018	2430110-1
			FNG	15/16	DARK GREEN	1.8±0.1	31.5±0.25	98-22017-1	2430193-1
			FNG	15/16	DARK GREEN	1.8±0.1	31.5±0.25	98-22017	2430109-1
			FNG	13/14	DARK GREEN	1.8±0.1	28.3±0.25	98-22016-1	2430192-1
			FNG	13/14	DARK GREEN	1.8±0.1	28.3±0.25	98-22016	2430108-1
			FNG	11/12	DARK GREEN	1.8±0.1	25.1±0.25	98-22015-1	2430191-1
			FNG	11/12	DARK GREEN	1.8±0.1	25.1±0.25	98-22015	2430107-1
			FNG	9/10	DARK GREEN	1.8±0.1	20.4±0.25	98-22014-1	2430190-1
			FNG	9/10	DARK GREEN	1.8±0.1	20.4±0.25	98-22014	2430106-1
			FNG	8	DARK GREEN	1.8±0.1	17.2±0.25	98-22013-1	2430189-1
			FNG	8	DARK GREEN	1.8±0.1	17.2±0.25	98-22013	2430105-1
			FNG	6	DARK GREEN	1.8±0.1	14.0±0.25	98-22012-1	2430188-1
			FNG	6	DARK GREEN	1.8±0.1	14.0±0.25	98-22012	2430104-1
			SNG	25	DARK GREY	2.6±0.13	47.3±0.38	98-22011-1	2430187-1
			SNG	25	DARK GREY	2.6±0.13	47.3±0.38	98-22011	2430103-1
			SNG	23/24	DARK GREY	2.6±0.13	44.1±0.38	98-22010-1	2430186-1
			SNG	23/24	DARK GREY	2.6±0.13	44.1±0.38	98-22010	2430102-1
			SNG	21/22	DARK GREY	2.6±0.13	40.9±0.38	98-22009-1	2430185-1
			SNG	21/22	DARK GREY	2.6±0.13	40.9±0.38	98-22009	2430101-1
			SNG	19/20	DARK GREY	2.6±0.13	37.8±0.25	98-22008-1	2430184-1
			SNG	19/20	DARK GREY	2.6±0.13	37.8±0.25	98-22008	2430100-1
			SNG	17/18	DARK GREY	1.8±0.1	34.7±0.25	98-22007-1	2430183-1
			SNG	17/18	DARK GREY	1.8±0.1	34.7±0.25	98-22007	2430099-1
			SNG	15/16	DARK GREY	1.8±0.1	31.5±0.25	98-22006-1	2430182-1
			SNG	15/16	DARK GREY	1.8±0.1	31.5±0.25	98-22006	2430098-1
			SNG	13/14	DARK GREY	1.8±0.1	28.3±0.25	98-22005-1	2430181-1
			SNG	13/14	DARK GREY	1.8±0.1	28.3±0.25	98-22005	2430097-1
			SNG	11/12	DARK GREY	1.8±0.1	25.1±0.25	98-22004-1	2430180-1
			SNG	11/12	DARK GREY	1.8±0.1	25.1±0.25	98-22004	2430096-1
			SNG	9/10	DARK GREY	1.8±0.1	20.4±0.25	98-22003-1	2430179-1
			SNG	9/10	DARK GREY	1.8±0.1	20.4±0.25	98-22003	2430095-1
			SNG	8	DARK GREY	1.8±0.1	17.2±0.25	98-22002-1	2430178-1
			SNG	8	DARK GREY	1.8±0.1	17.2±0.25	98-22002	2430094-1
			SNG	6	DARK GREY	1.8±0.1	14.0±0.25	98-22001-1	2430177-1
			SNG	6	DARK GREY	1.8±0.1	14.0±0.25	98-22001	2430093-1

THIS DRAWING IS A CONTROLLED DOCUMENT.

TE Connectivity

98-SERIES-JAM-NUT-SEALS

00779

10:1