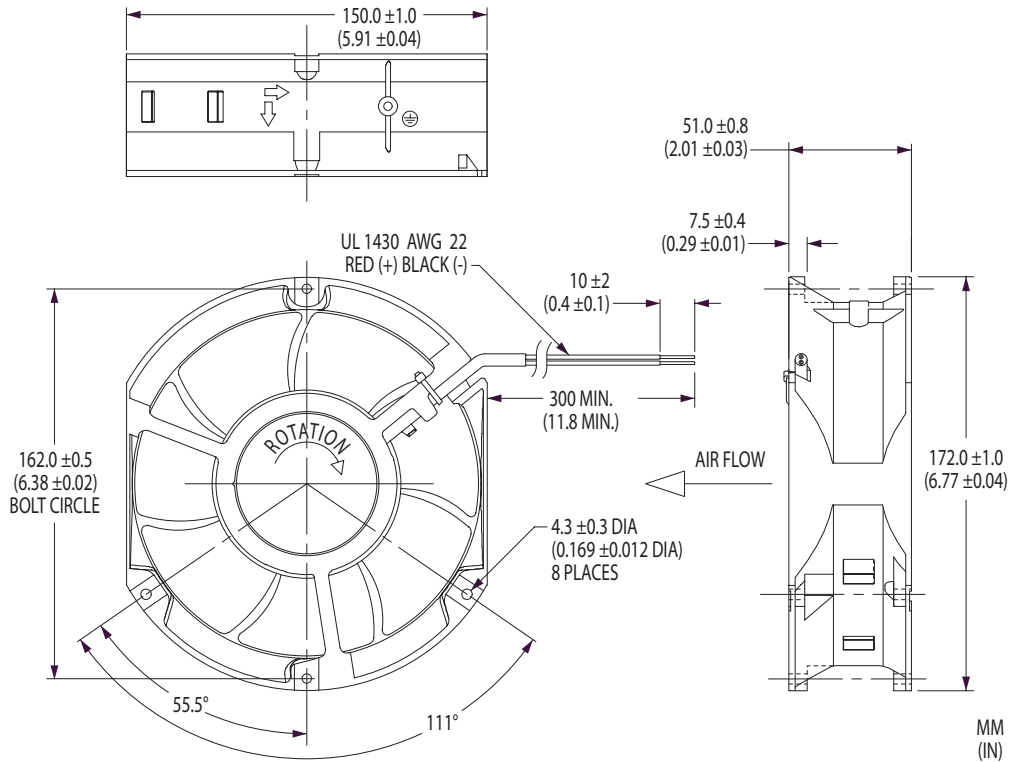


172x51 mm



X17L M7

- ✓ Feedback-Governed, Speed-Stable
- ✓ Air Flow Ratings to 410 CFM
- ✓ Performance Characteristics Enabled by 3-, 5- or 7-Blade Impellers
- ✓ Wide Variety of Monitor and Control Options and Signal Combinations
- ✓ Permanently Lubricated Ball Bearings



Tube Axial Cooling Fans

Model	Air Flow (CFM)	Max. Static Pressure (inwg)	Operating Voltage Nominal (V)	Operating Voltage Range (V)	Operating Current (A)	Input Power (W)	Fan Speed (rpm)	Sound Pressure (dBA)	Operating Temp. Min. (°C)	Operating Temp. Max. (°C)	L10 Life† (hours)
Seven-Blade Impeller											
X17L24BGM7-01	410	1.70	24	12.0-27.6	3.10	74.4	5300	66.3	-10	+70	70,000
X17L48BGM7-01	410	1.98	48	40.8-55.2	1.60	76.8	5300	66.3	-10	+70	70,000
X17L24BHM7-01	300	1.30	24	12.0-27.6	1.20	28.8	3900	60.8	-10	+70	—
Five-Blade Impeller											
X17L24BGM5-01	350	1.85	24	12.0-27.6	2.20	52.8	5300	65.9	-10	+70	70,000
X17L24BHM5-01	250	1.33	24	12.0-27.6	0.95	22.8	3900	57.5	-10	+70	—
Three-Blade Impeller											
X17L48BGM3-01	390	2.13	48	36.0-60.0	1.27	61.0	5400	68.0	-10	+70	70,000
X17L48BHM3-01	360	1.70	48	36.0-60.0	0.94	45.1	4900	63.5	-10	+70	—

Air flow, current, speed and sound pressure ratings are at nominal operating voltage and zero static pressure. Current and power ratings are average expected values under those conditions. † L10 bearing life expectancy at T_A = +40°C. © UltraFlo is a registered trademark of Nidec Corporation.

Noise Power Emission Levels*

Operating Voltage (V)	Fraction of Max. Air Flow	Fan Speed (rpm)	Static Pressure (inwg)	NPEL (Bels)
X17L24BGM7				
27.6	100%	5300	0	8.0
	80%	5210	0.62	8.0
	20%	4730	1.31	8.3
24.0	100%	5300	0	8.0
	80%	5210	0.62	8.0
	20%	4730	1.31	8.3
12.0	100%	3050	0	6.6
	80%	2990	0.20	6.6
	20%	2985	0.58	7.2

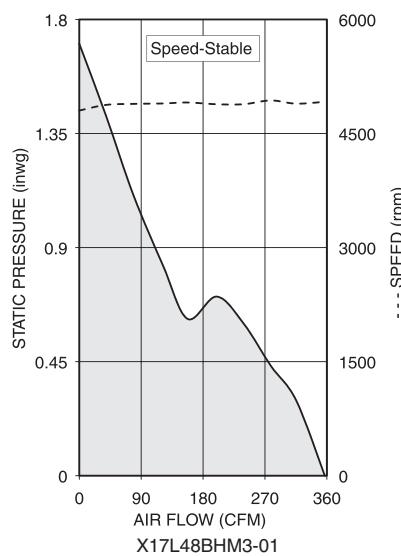
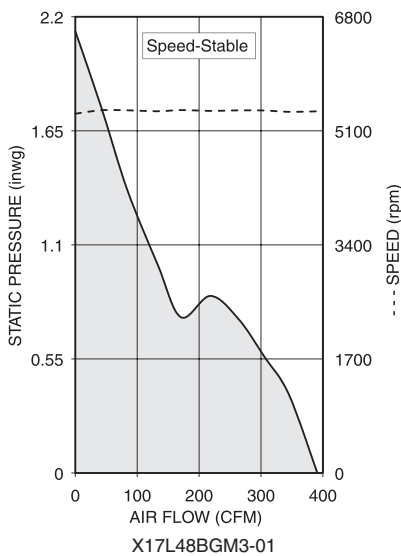
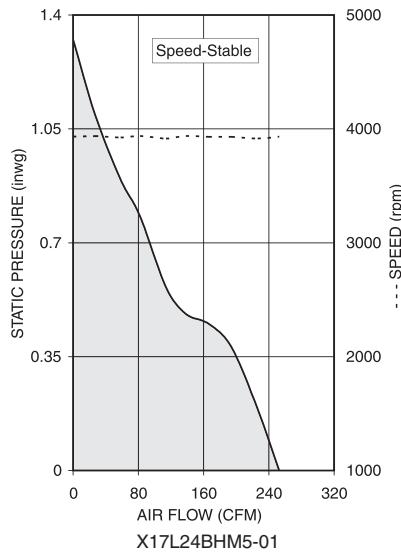
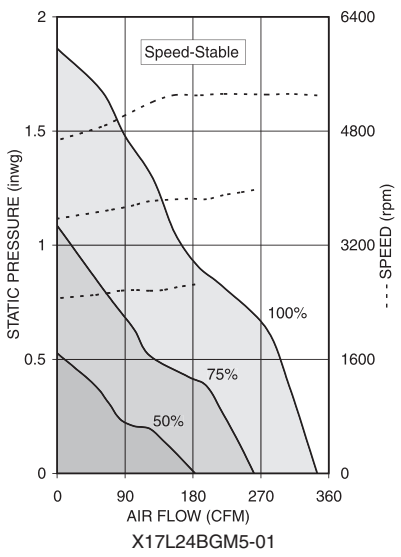
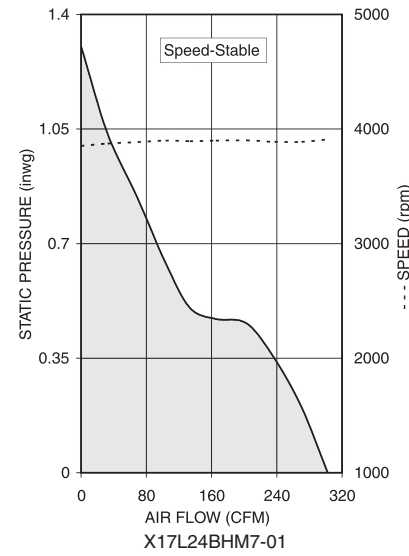
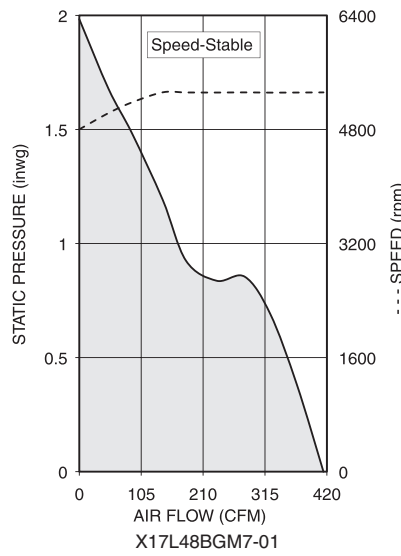
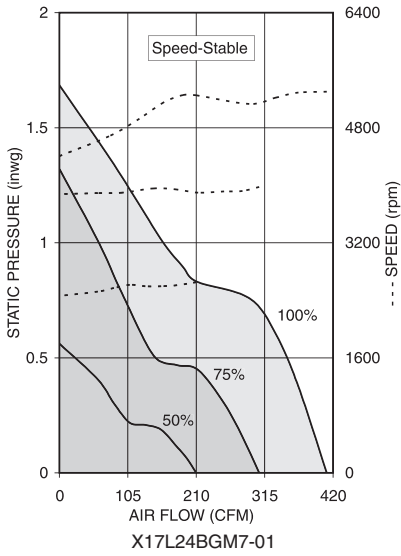
Operating Voltage (V)	Fraction of Max. Air Flow	Fan Speed (rpm)	Static Pressure (inwg)	NPEL (Bels)
X17L24BGM5				
27.6	100%	5300	0	7.6
	80%	5210	0.63	7.6
	20%	4730	1.60	8.4
24.0	100%	5300	0	7.6
	80%	5210	0.63	7.6
	20%	4730	1.60	8.4
12.0	100%	3650	0	6.6
	80%	3555	0.27	6.8
	20%	3370	0.77	7.5

* Sound levels in the tables are mean values, measured as the fans - without guards or other accessories - expel air from a test plenum on which they are mounted, using test methods and conventions prescribed by IPC-9591.



All for dreams

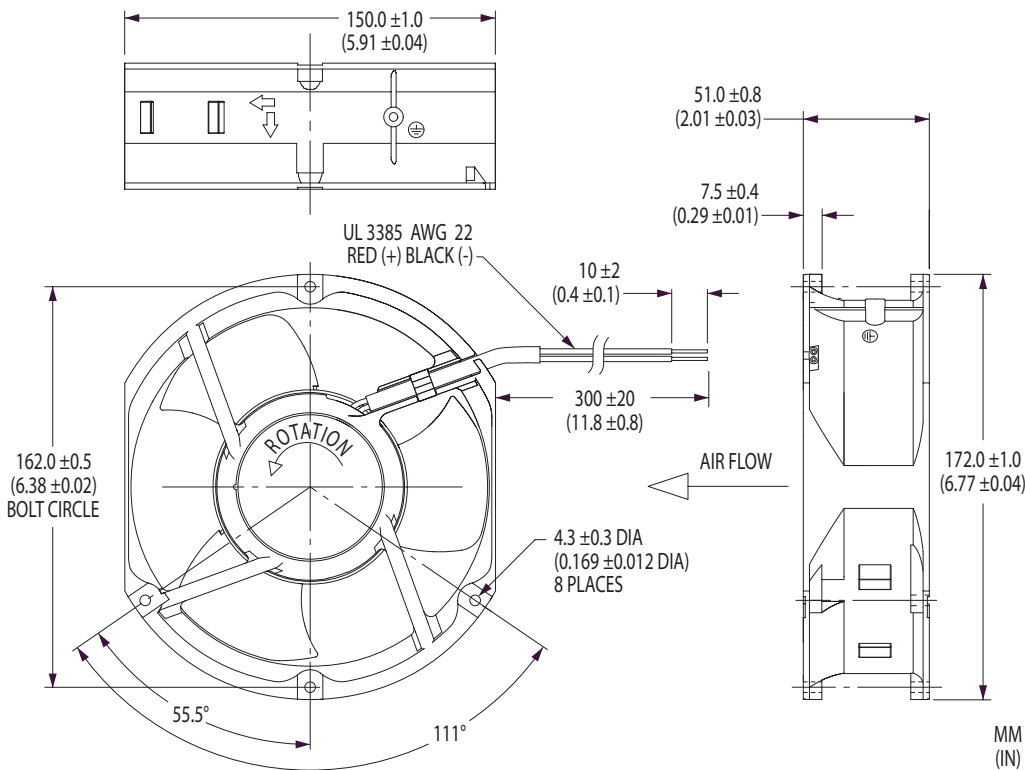
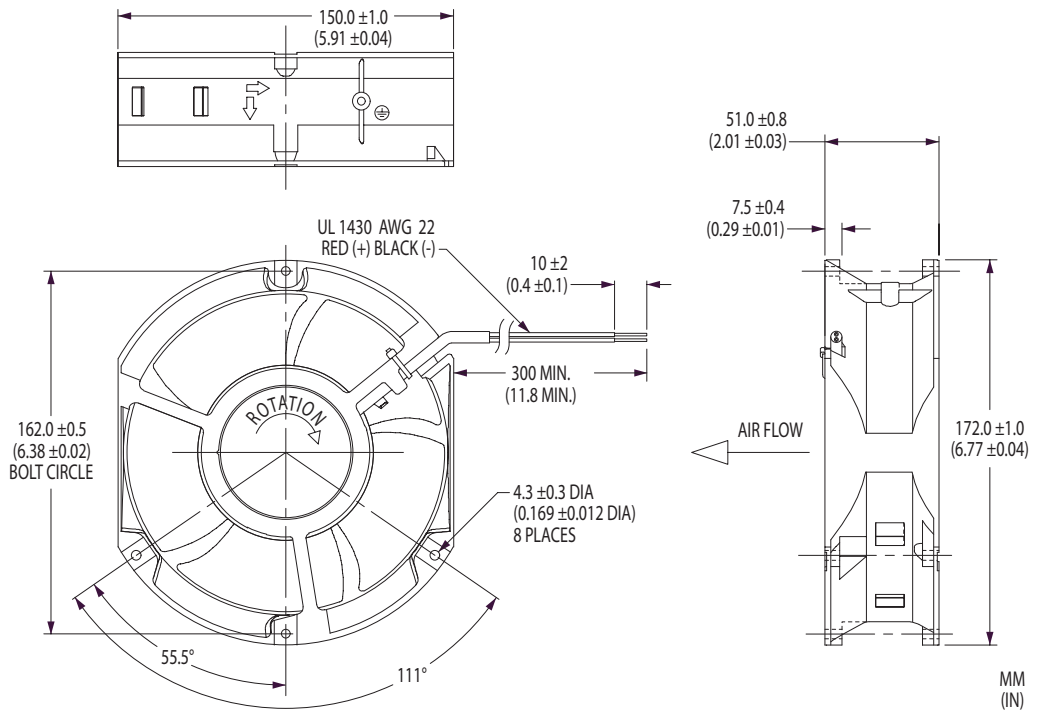
Nidec America Corporation · phone 781-848-0970 · email fans@nidecamerica.com · www.nidecamerica.com



172x51 mm



X17L M5



X17L M3