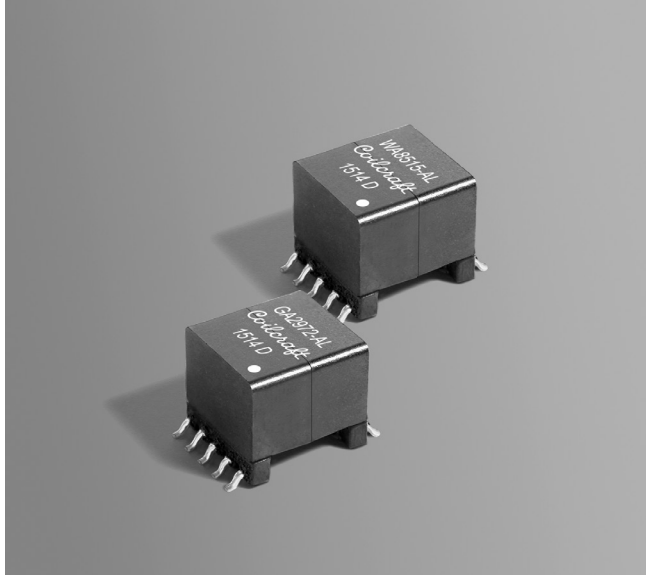


NEW!

25 W Forward Mode Transformer for TI TPS23754 PWM Controller



- Designed for forward topology operating at 250 kHz
- Developed for use with Texas Instruments TPS23754 PWM Controller
- 20 – 57 V input; excellent for PoE applications
- 1500Vrms, one minute isolation primary and bias to secondary

Core material Ferrite

Terminations RoHS tin-silver-copper over tin over nickel over phos bronze. Other terminations available at additional cost.

Weight 6.7 g

Ambient temperature –40°C to +85°C

Maximum part temperature +125°C (ambient + temp rise)

Storage temperature Component: –40°C to +125°C.

Tape and reel packaging: –40°C to +80°C

Resistance to soldering heat Max three 40 second reflows at +260°C, parts cooled to room temperature between cycles

Moisture Sensitivity Level (MSL) 1 (unlimited floor life at <30°C / 85% relative humidity)

Mean Time Between Failures (MTBF) / Failures in Time (FIT)

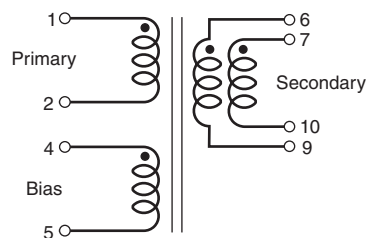
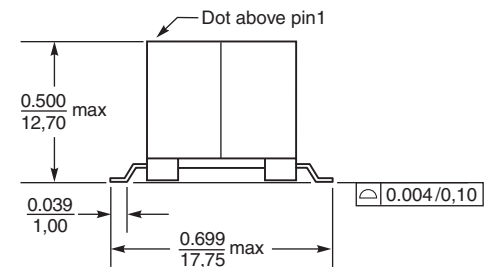
Calculated per Telcordia SR-322 26,315,789 hours / 38 per billion hours

Packaging 175 per 13" reel Plastic tape: 32 mm wide, 0.5 mm thick, 28 mm pocket spacing, 13.40 mm pocket depth

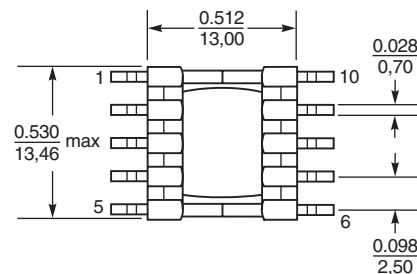
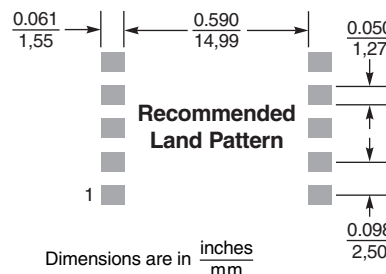
PCB washing Tested to MIL-STD-202 Method 215 plus an additional aqueous wash. See [Doc787_PCB_Washing.pdf](#).

Part number	Inductance ¹ min (µH)	DCR max (mOhms) ²			Leakage inductance ³ max (µH)	Input voltage range (V)	Turns ratio ⁴		Output ⁵
		pri	sec	bias			pri : sec	pri : bias	
WA8515-ALD	90	146	25	494	0.816	20 – 57	1 : 0.406	1 : 0.813	5.0 V, 4.8 A

1. Inductance is measured at 250 kHz, 0.1 Vrms, 0 Adc.
 2. DCR for the secondary is measured with the windings connected in parallel.
 3. Leakage inductance is for the primary and is measured with the secondary shorted.
 4. Turns ratio is with the secondary windings connected in parallel.
 5. Output is with the secondary windings connected in parallel. Bias winding output is 12 V, 20 mA.
 6. Electrical specifications at 25°C.
- Refer to Doc 362 "Soldering Surface Mount Components" before soldering.



Secondary windings to be connected in parallel on PC board.



Parts shown are preproduction products available for evaluation only.

US +1-847-639-6400 sales@coilcraft.com

UK +44-1236-730595 sales@coilcraft-europe.com

Taiwan +886-2-2264 3646 sales@coilcraft.com.tw

China +86-21-6218 8074 sales@coilcraft.com.cn

Singapore + 65-6484 8412 sales@coilcraft.com.sg

www.coilcraft.com

Document 1432 Revised 10/17/18

© Coilcraft Inc. 2018

This product may not be used in medical or high risk applications without prior Coilcraft approval. Specification subject to change without notice. Please check web site for latest information.